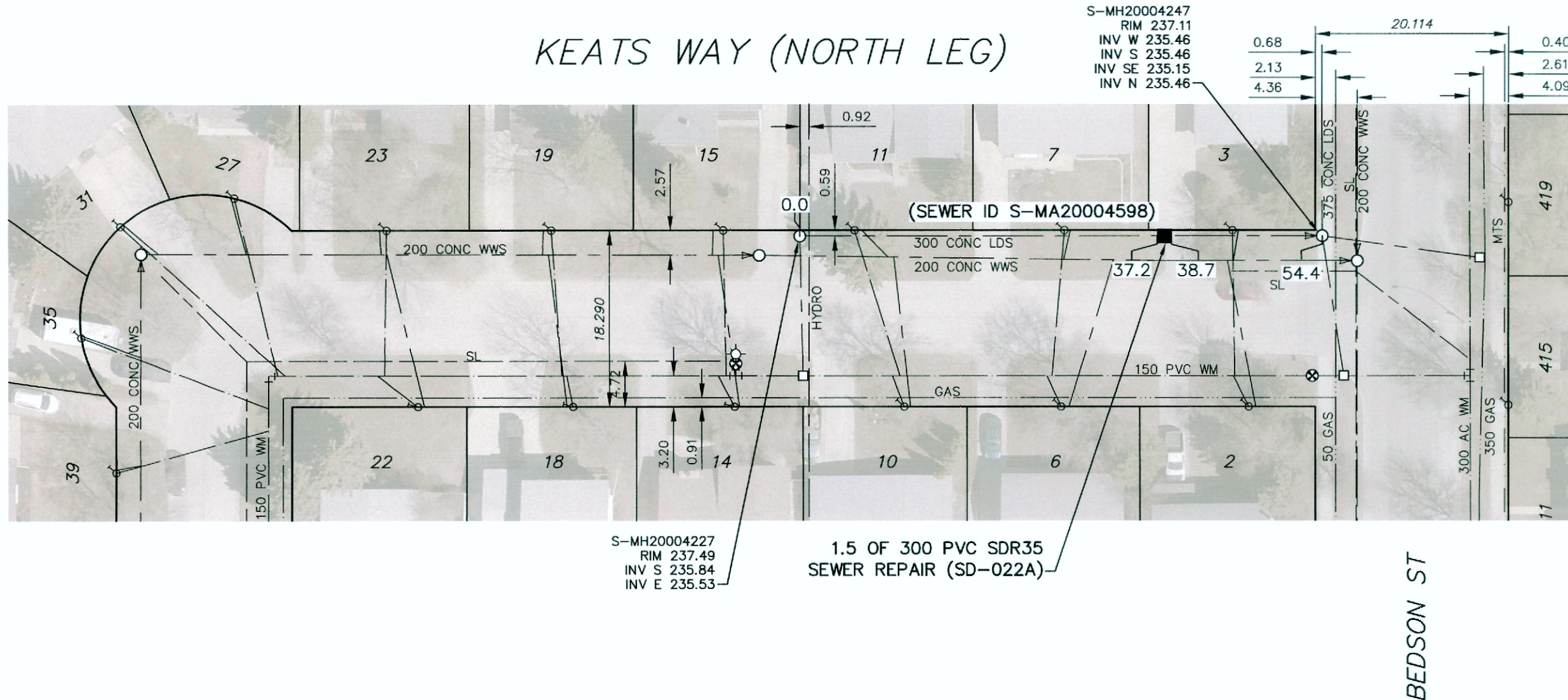


# KEATS WAY (NORTH LEG)



**WARNING**

IF POWER EQUIPMENT OR EXPLOSIVES ARE TO BE USED FOR EXCAVATION ON THIS PROJECT THE CONTRACTOR MUST:

- 1) NOTIFY THE GAS COMPANY OF THE PROPOSED LOCATION OF EXCAVATION.
- 2) TAKE PRECAUTION TO AVOID DAMAGE TO GAS COMPANY INSTALLATIONS.

SEE PROVINCIAL REGULATION 210/72 FOR DETAILS

**PROPERTY LIMITS DELINEATION**

DELINEATION OF PROPERTY LIMITS AS SHOWN ON THIS DWG DOES NOT REPRESENT A "LEGAL SURVEY". KGS GROUP MAKES NO REPRESENTATION OR WARRANTY AS TO THE ACCURACY OF PROPERTY LIMITS DELINEATED ON THIS DWG, NOR ON THE DIMENSIONAL ACCURACY OF DWG FEATURES RELATIVE TO THOSE PROPERTY LIMITS.

**ENGINEERS  
GEOSCIENTISTS  
MANITOBA**

Certificate of Authorization  
KGS Group  
No. 245

FOR INDEX SEE  
DWG D-12503

**METRIC**

WHOLE NUMBERS INDICATE MILLIMETRES  
DECIMALIZED NUMBERS INDICATE METRES

<b>LOCATION APPROVED UNDERGROUND STRUCTURES</b>  SUPV. U/G STRUCTURES COMMITTEE      DATE  NOTE: LOCATION OF UNDERGROUND STRUCTURES AS SHOWN ARE BASED ON THE BEST INFORMATION AVAILABLE BUT NO GUARANTEE IS GIVEN THAT ALL EXISTING UTILITIES ARE SHOWN OR THAT THE GIVEN LOCATIONS ARE EXACT. CONFIRMATION OF EXISTENCE AND EXACT LOCATION OF ALL SERVICES MUST BE OBTAINED FROM THE INDIVIDUAL UTILITIES BEFORE PROCEEDING WITH CONSTRUCTION.		B.M. ELEV.				ENGINEER'S SEAL 		<p><b>THE CITY OF WINNIPEG</b> WATER AND WASTE DEPARTMENT ENGINEERING DIVISION</p>	
DESIGNED BY      MID DRAWN BY      GEL SCALE: HORIZONTAL      1:500 VERTICAL		CHECKED BY      JM APPROVED BY      RBO RELEASED FOR CONSTRUCTION DATE				CONSULTANT DRAWING NUMBER D-12511		2020 SEWER MAIN RENEWALS BY EXTERNAL POINT REPAIR <b>KEATS WAY (NORTH LEG)</b> 2ND MH WEST OF BEDSON STREET TO MH AT BEDSON STREET	
NO.      ISSUED FOR TENDER      20/04/08      MJD		NO.      REVISIONS      DATE      BY		DATE      2020 04 06		PLOT DATE:      2020 04 06		BID OPPORTUNITY: 213-2020 CONTRACT NUMBER: 1	