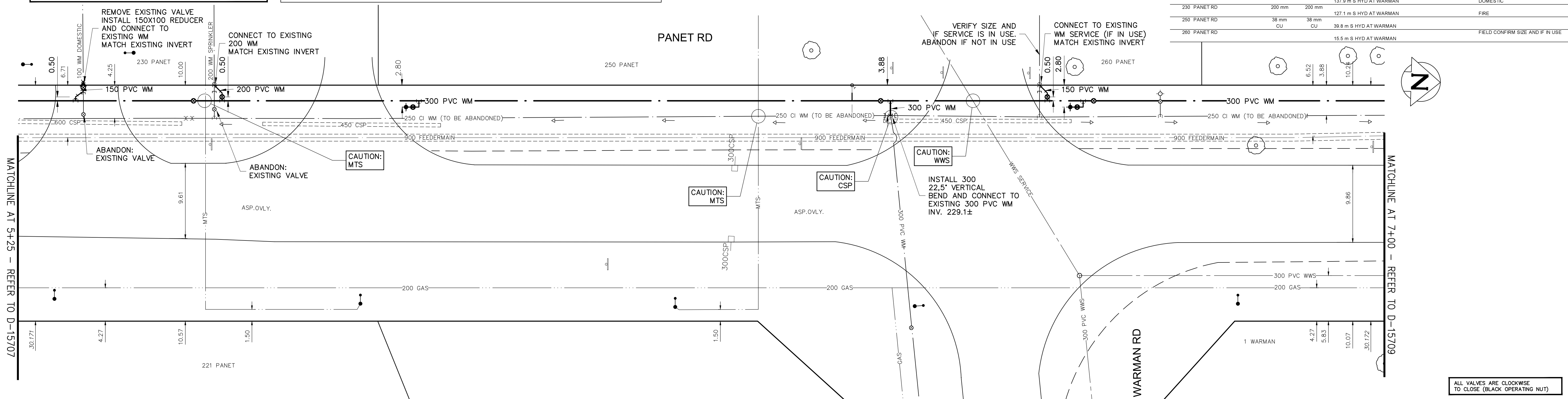


WATER SERVICE INFORMATION

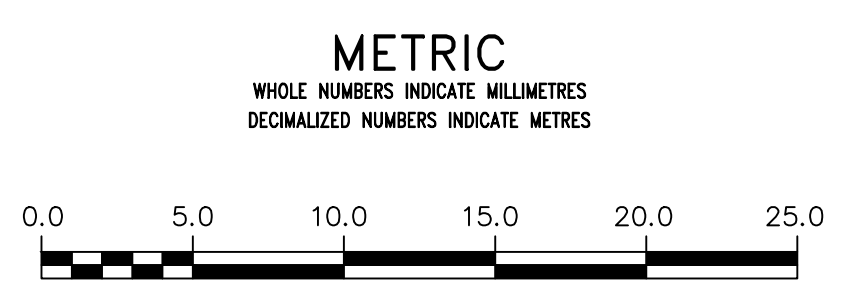
ADDRESS	SIZE (mm) MATERIAL (STREET)	SIZE (mm) MATERIAL (PROP.)	SHORT & LONG MEASUREMENT	CORP. LOCATION	REMARKS
230 PANET RD	100 mm	100 mm	11.8 m N N BL		DOMESTIC
230 PANET RD	200 mm	200 mm	137.9 m S HYD AT WARMAN		FIRE
250 PANET RD	38 mm	38 mm	127.1 m S HYD AT WARMAN		FIELD CONFIRM SIZE AND IF IN USE
260 PANET RD			15.5 m S HYD AT WARMAN		

NOTE: CHAINAGES SHOWN ARE ALONG W.P. OF PANET RD

NOTE: NOTIFY CONSTRUCTION SERVICES COORDINATOR (CITY OF WINNIPEG) AT 986-4289, 48 HOURS PRIOR TO EXCAVATION NEAR FEEDERMAIN



ALL VALVES ARE CLOCKWISE TO CLOSE (BLACK OPERATING NUT)



ENGINEERS GEOSCIENTISTS MANITOBA
 Certificate of Authorization
 AECOM Canada Ltd.
 No. 4671 Date *April 13/20*
 REFER TO DRAWING D-15700 FOR CONSTRUCTION NOTES

WARNING
 IF POWER EQUIPMENT OR EXPLOSIVES ARE TO BE USED FOR EXCAVATION ON THIS PROJECT THE CONTRACTOR MUST:
 1) NOTIFY THE GAS COMPANY OF THE PROPOSED LOCATION OF EXCAVATION.
 2) TAKE PRECAUTION TO AVOID DAMAGE TO GAS COMPANY INSTALLATIONS.
 SEE PROVINCIAL REGULATION 210/72 FOR DETAILS

LOCATION APPROVED UNDERGROUND STRUCTURES
 SUPV. U/G STRUCTURES COMMITTEE DATE
 NOTE:
 LOCATION OF UNDERGROUND STRUCTURES AS SHOWN ARE BASED ON THE BEST INFORMATION AVAILABLE BUT NO GUARANTEE IS GIVEN THAT ALL EXISTING UTILITIES ARE SHOWN OR THAT THE GIVEN LOCATIONS ARE EXACT. CONFIRMATION OF EXISTENCE AND EXACT LOCATION OF ALL SERVICES MUST BE OBTAINED FROM THE INDIVIDUAL UTILITIES BEFORE PROCEEDING WITH CONSTRUCTION.

B.M. 33-014	360 (654360) - S.W. Cor. Mission St. & Panet Rd.,		
ELEV. 231.421 m	Tbl. in 7.6 m Conc. pile, beneath Valve Box, 12.7 mm I.B. on N. side of pile for location purposes only.		
NO.	REVISIONS	DATE	BY
0	ISSUED FOR TENDER	20/04/03	GSK
B	ISSUED FOR REVIEW	20/03/18	GSK
A	PRELIMINARY	20/02/13	GSK

AECOM

DESIGNED BY JP CHECKED BY GSK
 DRAWN BY JP APPROVED BY
 SCALE: HORIZONTAL 1:250 VERTICAL 1:50
 DATE 2020/04/03

ENGINEER'S SEAL
 PROVINCE OF MANITOBA
 K.W. FITCHETT
 REGISTERED PROFESSIONAL ENGINEER
 CONSULTANT DRAWING NUMBER C-0008

THE CITY OF WINNIPEG
 WATER AND WASTE DEPARTMENT
 ENGINEERING DIVISION
 2020 WATER MAIN RENEWALS CONTRACT 6
 PANET ROAD
 FROM 107m S OF WARMAN ROAD TO 38m N OF WARMAN ROAD
 SHEET 10 OF 13
 CITY DRAWING NUMBER D-15708