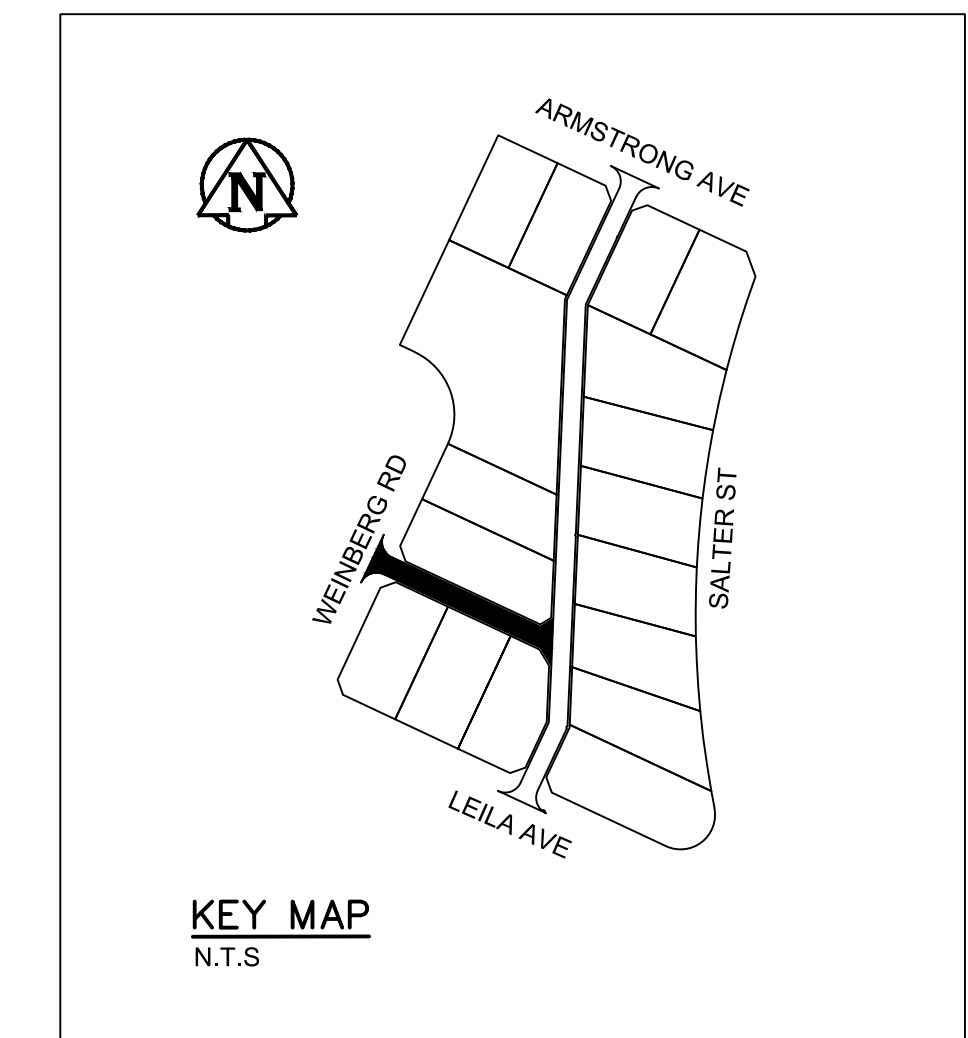
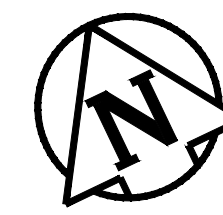
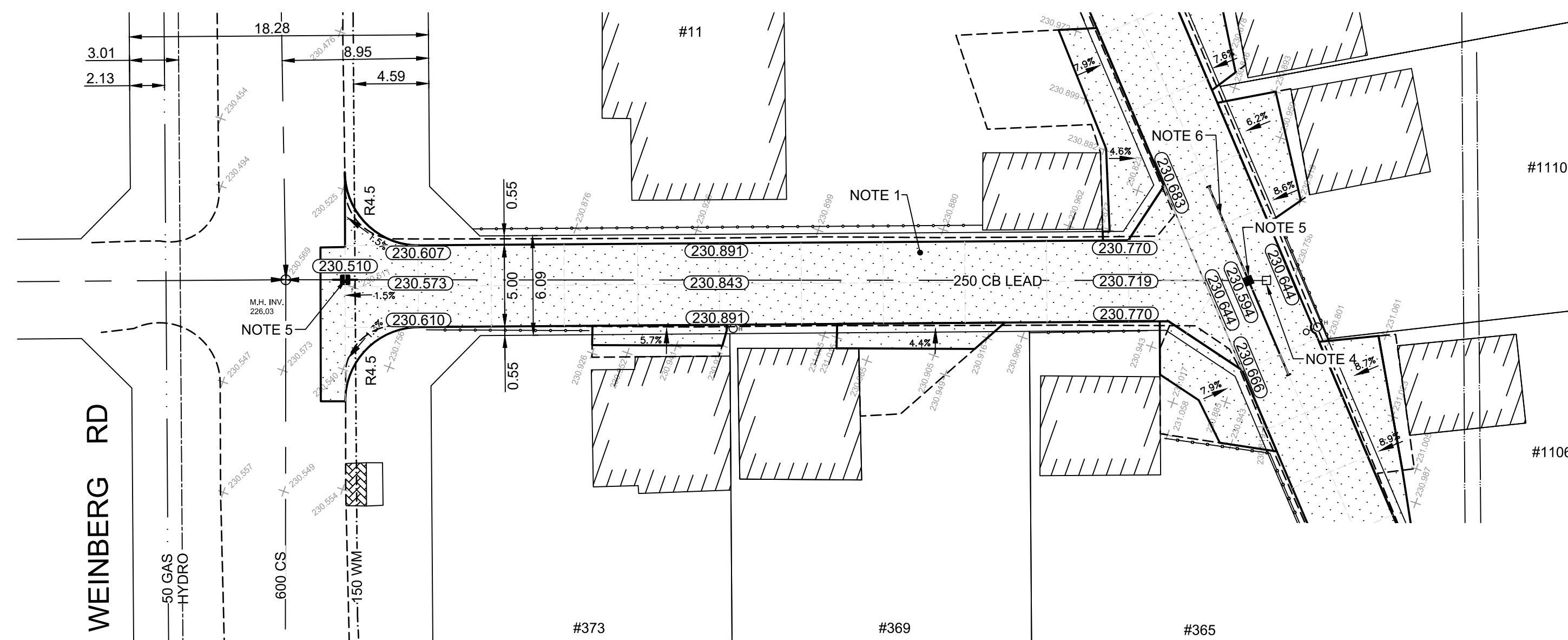


TYPICAL CROSS SECTION
N.T.S.



- CONSTRUCTION NOTES**
- REMOVE EXISTING PAVEMENT AND CONSTRUCT NEW 150mm REINFORCED CONCRETE PAVEMENT
 - REMOVE EXISTING APPROACH AND CONSTRUCT NEW 150mm REINFORCED CONCRETE APPROACH (SD-232)
 - RENEW 100mm CONCRETE SIDEWALK (SD-228A)
 - REMOVE EXISTING CATCH BASIN AS PER CW 2130
 - INSTALL NEW CATCH BASIN (SD-025), AND CONNECT TO EXISTING CB LEAD AS PER CW 2130
 - INSTALL 6.0m SUBDRAINS (SD-045) CONNECT TO CATCHBASIN AND CAP ENDS AS PER CW 3120
- GENERAL NOTES**
- PAVEMENT DIMENSIONS ARE TO BACK OF CURB / EDGE OF PAVEMENT
 - ALL CURB RADII UNDER 15.0m SHALL BE MODIFIED BARRIER (SD-203B)
 - CURB REPLACEMENT AS DIRECTED BY CONTRACT ADMINISTRATOR
 - PAVEMENT REPAIRS SHOWN ARE ONLY A REPRESENTATIVE SAME OF THE TENDER QUANTITIES

METRIC
WHOLE NUMBERS INDICATE MILLIMETERS
DECIMALIZED NUMBERS INDICATE METERS
BID OPPORTUNITY NO. 4-2020

EXISTING	LEGEND - PLAN	PROPOSED	EXISTING	LEGEND - PLAN	PROPOSED	EXISTING	LEGEND - PROFILE	PROPOSED
⊕	HYDRANT	◆	---	LDS/WWS	---	▨	CONCRETE	▨
⊗	VALVE	◆	---	WATERMAIN	---	▨	CONCRETE SIDEWALK	▨
⊙	CURB STOP	◆	---	GAS	---	▨	ASPHALT	▨
○	MANHOLE	●	---	TRAFFIC SIGNALS	---	▨	BRICK	▨
□	CATCH BASIN	■	---	HYDRO/STREET LIGHT	---	▨	LEGEND - PLAN	PROPOSED
△	CURB INLET	▲	---	MTS/SHAW	---	---	LEGEND - PROFILE	PROPOSED
○	HYDRO POLE	●	---	CURB RENEWAL	---	---	WEST GUTTER	---
○	LIGHT STANDARD	●	---	PROPERTY LINE	---	---	CENTER LINE	---
○	TRAFFIC SIGNAL POLE	●	---	RAMP CURB	---	---	EAST GUTTER	---
⊕	SURVEY BAR	◆	---	ELEVATIONS	(31.000)	---	WEST SIDEWALK	---
⊕	GEODETIC BENCH MARK	◆	---	TREE	---	---	EAST SIDEWALK	---

LOCATION APPROVED
UNDERGROUND STRUCTURES

DATE

NOTE:
LOCATION OF UNDERGROUND STRUCTURES AS SHOWN ARE BASED ON THE BEST INFORMATION AVAILABLE. BUT NO GUARANTEE IS GIVEN THAT ALL EXISTING UTILITIES ARE SHOWN OR THAT THE GIVEN LOCATIONS ARE EXACT. CONFIRMATION OF EXISTENCE AND EXACT LOCATION OF ALL SERVICES MUST BE OBTAINED FROM THE INDIVIDUAL UTILITIES BEFORE PROCEEDING WITH CONSTRUCTION.

NO.	REVISIONS	DATE	BY
2.	ISSUED FOR CONSTRUCTION	14/02/20	J.W.
1.	SUBMIT FOR PLAN APPROVAL	16/12/19	E.H.

B.M. ELEV. IB @ N.E. CORNER 364 LEILA AVE 230.708

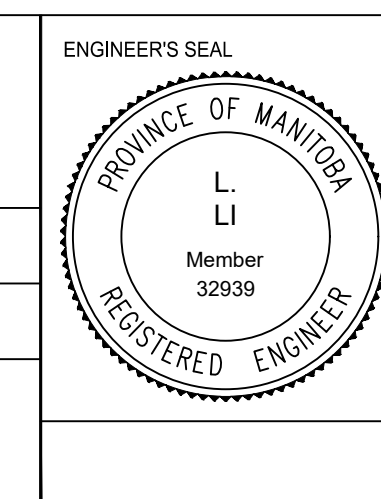
ENGINEERING DIVISION
TECHNOLOGY SERVICES BRANCH
106 - 1155 PACIFIC AVE

DESIGNED BY C.W. CHECKED BY E.H.

DRAWN BY C.W. APPROVED BY

HOR. SCALE: 1 : 250
VERTICAL: 1 : 10

DATE 2019/11/13



THE CITY OF WINNIPEG
PUBLIC WORKS DEPARTMENT

SALTER ST / WEINBERG RD ALLEY
FROM LEILA AVE TO ARMSTRONG AVE
CONCRETE RECONSTRUCTION AND ASSOCIATED WORKS
FROM STA. 1+00 TO STA. 2+50

CITY DRAWING NUMBER SE-20-03
SHEET 3 OF 39

1