

- CONSTRUCTION NOTES**
1. REMOVE EXISTING PAVEMENT AND CONSTRUCT NEW 200mm REINFORCED CONCRETE PAVEMENT
  2. RECONSTRUCT 100mm CONCRETE SIDEWALK (SD-228A)
  3. REMOVE EXISTING CURB AND CONSTRUCT NEW BARRIER CURB
  4. INSTALL NEW 1800mm CATCH BASIN WITH CURB AND GUTTER INLET (SD-024), CONNECT TO EXISTING CATCH BASIN LEAD AS PER CW 2130
  5. INSTALL NEW CURB AND GUTTER INLET FRAME AND COVER (AP-011, AP-012)
  6. REMOVE EXISTING ASPHALT AND INSTALL NEW 100mm CONCRETE SIDEWALK
  7. REMOVE EXISTING ASPHALT OVERLAY
  8. CONSTRUCT NEW ASPHALT OVERLAY 80mm (TYP)
  9. REMOVE EXISTING CATCH BASIN AND CURB INLET AS PER CW 2130
  10. REMOVE EXISTING EXISTING CONCRETE AND CONSTRUCT NEW 150mm REINFORCED CONCRETE APPROACH (SD-232)
  11. CONSTRUCT NEW MONOLITHIC CURB AND 3.6m SIDEWALK (SD-228B)
  12. ABANDON EXISTING CATCH BASIN AND INSTALL NEW 1800mm CATCH BASIN WITH CURB AND GUTTER INLET (SD-024), CONNECT TO EXISTING 2250 SRS.

- GENERAL NOTES**
- A. PAVEMENT DIMENSIONS ARE TO BACK OF CURB
  - B. ALL CURB RADII UNDER 15.0m SHALL BE MODIFIED
  - C. CURB REPLACEMENT AS DIRECTED BY CONTRACT ADMINISTRATOR
  - D. ASPHALT TIE-INS ON APPROACHES TO BE DETERMINED IN THE FIELD BY THE CONTRACT ADMINISTRATOR
  - E. PAVEMENT REPAIRS SHOWN ARE ONLY A REPRESENTATIVE SAMPLE OF THE TENDER QUANTITIES

**METRIC**  
 WHOLE NUMBERS INDICATE MILLIMETERS  
 DECIMALIZED NUMBERS INDICATE METERS  
 BID OPPORTUNITY NO. 4-2020

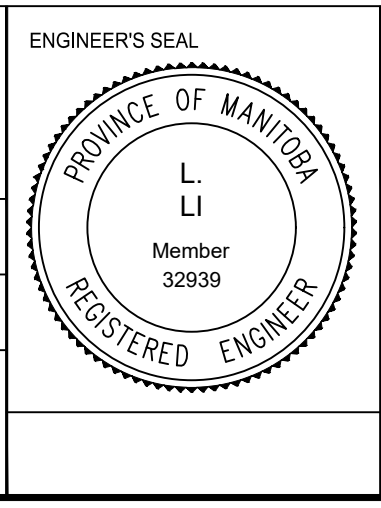
EXISTING	LEGEND - PLAN	PROPOSED	EXISTING	LEGEND - PLAN	PROPOSED	EXISTING	LEGEND - PROFILE	PROPOSED
	HYDRANT			LDS/WWS			CONCRETE	
	VALVE			WATERMAIN			CONCRETE SIDEWALK	
	CURB STOP			GAS			ASPHALT	
	MANHOLE			TRAFFIC SIGNALS			LEGEND - PLAN	
	CATCH BASIN			HYDRO/STREET LIGHT			LEGEND - PROFILE	
	CURB INLET			MTS/SHAW			NORTH GUTTER	
	HYDRO POLE			PROPERTY LINE			CENTER LINE	
	LIGHT STANDARD			RAMP CURB			SOUTH GUTTER	
	TRAFFIC SIGNAL POLE			ELEVATIONS			NORTH SIDEWALK	
	SURVEY BAR			TREE			SOUTH SIDEWALK	
	GEODETIC BENCH MARK							

**LOCATION APPROVED UNDERGROUND STRUCTURES**

SYMBOL	STRUCTURE	DATE
	2250 SRS	
	100 GAS (ABAND.)	
	300 CS	
	50 GAS	

**NOTE:**  
 LOCATION OF UNDERGROUND STRUCTURES AS SHOWN ARE BASED ON THE BEST INFORMATION AVAILABLE. BUT NO GUARANTEE IS GIVEN THAT ALL EXISTING UTILITIES ARE SHOWN OR THAT THE GIVEN LOCATIONS ARE EXACT. CONFIRMATION OF EXISTENCE AND EXACT LOCATION OF ALL SERVICES MUST BE OBTAINED FROM THE INDIVIDUAL UTILITIES BEFORE PROCEEDING WITH CONSTRUCTION.

B.M. ELEV.	GBM 26-076	232.071
DESIGNED BY	T.K.	CHECKED BY C.H.
DRAWN BY	T.K.	APPROVED BY
2.	ISSUED FOR CONSTRUCTION	14/02/20 J.W.
1.	SUBMIT FOR PLAN APPROVAL	11/12/19 J.W.
NO.	REVISIONS	DATE BY
		2020/02/21



**ENGINEERING DIVISION**  
 TECHNOLOGY SERVICES BRANCH  
 106 - 1155 PACIFIC AVE

**THE CITY OF WINNIPEG**  
 PUBLIC WORKS DEPARTMENT

**BURROWS AVENUE WB**  
 FROM MAIN STREET TO POWERS STREET  
 ASPHALT OVERLAY AND ASSOCIATED WORKS  
 FROM STA. 5+80 TO STA. 7+00

CITY DRAWING NUMBER SE-20-08  
 SHEET 8 OF 39  
**5**