

- CONSTRUCTION NOTES**
1. REMOVE EXISTING PAVEMENT AND CONSTRUCT NEW 200mm REINFORCED CONCRETE PAVEMENT
 2. RECONSTRUCT 100mm CONCRETE SIDEWALK (SD-228A)
 3. REMOVE EXISTING CURB AND CONSTRUCT NEW BARRIER CURB
 4. INSTALL NEW 1800mm CATCH BASIN WITH CURB AND GUTTER INLET (SD-024), CONNECT TO EXISTING CATCH BASIN LEAD AS PER CW 2130
 5. INSTALL NEW CURB AND GUTTER INLET FRAME AND COVER (AP-011, AP-012)
 6. REMOVE EXISTING ASPHALT AND INSTALL NEW 100mm CONCRETE SIDEWALK
 7. REMOVE EXISTING ASPHALT OVERLAY
 8. CONSTRUCT NEW ASPHALT OVERLAY 80mm (TYP)
 9. REMOVE EXISTING CATCH BASIN AND CURB INLET AS PER CW 2130
 10. REMOVE EXISTING EXISTING CONCRETE AND CONSTRUCT NEW 150mm REINFORCED CONCRETE APPROACH (SD-232)
 11. CONSTRUCT NEW MONOLITHIC CURB AND 3.6m SIDEWALK (SD-228B)
 12. ABANDON EXISTING CATCH BASIN AND INSTALL NEW 1800mm CATCH BASIN WITH CURB AND GUTTER INLET (SD-024), CONNECT TO EXISTING 2250 SRS.

- GENERAL NOTES**
- A. PAVEMENT DIMENSIONS ARE TO BACK OF CURB
 - B. ALL CURB RADII UNDER 15.0m SHALL BE MODIFIED
 - C. CURB REPLACEMENT AS DIRECTED BY CONTRACT ADMINISTRATOR
 - D. ASPHALT TIE-INS ON APPROACHES TO BE DETERMINED IN THE FIELD BY THE CONTRACT ADMINISTRATOR
 - E. PAVEMENT REPAIRS SHOWN ARE ONLY A REPRESENTATIVE SAMPLE OF THE TENDER QUANTITIES

METRIC
WHOLE NUMBERS INDICATE MILLIMETERS
DECIMALIZED NUMBERS INDICATE METERS
BID OPPORTUNITY NO. 4-2020

EXISTING	LEGEND - PLAN	PROPOSED	EXISTING	LEGEND - PLAN	PROPOSED	EXISTING	LEGEND - PROFILE	PROPOSED
⊕	HYDRANT	◆	---	LDS/WWS	---	▨	CONCRETE	▨
⊗	VALVE	●	---	WATERMAIN	---	▨	CONCRETE SIDEWALK	▨
⊙	CURB STOP	●	---	GAS	---	▨	ASPHALT	▨
○	MANHOLE	●	---	TRAFFIC SIGNALS	---			
□	CATCH BASIN	●	---	HYDRO/STREET LIGHT	---	EXISTING	LEGEND - PLAN	PROPOSED
△	CURB INLET	▲	---	MTS/SHAW	---			
○	HYDRO POLE	●	---	CURB RENEWAL	---			
○	LIGHT STANDARD	●	---	PROPERTY LINE	---			
○	TRAFFIC SIGNAL POLE	●	---	RAMP CURB	---			
⊕	SURVEY BAR	◆	---	ELEVATIONS	---			
⊕	GEODETIC BENCH MARK	◆	---	TREE	---			

LOCATION APPROVED
UNDERGROUND STRUCTURES

DATE: _____

NOTE:
LOCATION OF UNDERGROUND STRUCTURES AS SHOWN ARE BASED ON THE BEST INFORMATION AVAILABLE. BUT NO GUARANTEE IS GIVEN THAT ALL EXISTING UTILITIES ARE SHOWN OR THAT THE GIVEN LOCATIONS ARE EXACT. CONFIRMATION OF EXISTENCE AND EXACT LOCATION OF ALL SERVICES MUST BE OBTAINED FROM THE INDIVIDUAL UTILITIES BEFORE PROCEEDING WITH CONSTRUCTION.

B.M. ELEV. GBM 26-076 232.071

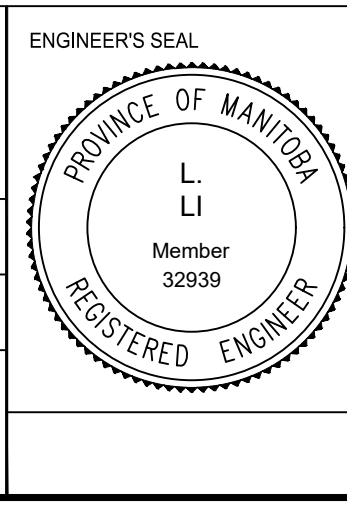
ENGINEERING DIVISION
TECHNOLOGY SERVICES BRANCH
106 - 1155 PACIFIC AVE

DESIGNED BY	T.K.	CHECKED BY	C.H.
DRAWN BY	T.K.	APPROVED BY	

HOR. SCALE: 1 : 250
VERTICAL: 1 : 10

DATE: 2020/02/21

NO.	REVISIONS	DATE	BY
2.	ISSUED FOR CONSTRUCTION	14/02/20	J.W.
1.	SUBMIT FOR PLAN APPROVAL	11/12/19	J.W.



THE CITY OF WINNIPEG
PUBLIC WORKS DEPARTMENT

BURROWS AVENUE WB
FROM MAIN STREET TO POWERS STREET
ASPHALT OVERLAY AND ASSOCIATED WORKS
FROM STA. 7+00 TO STA. 8+20

CITY DRAWING NUMBER SE-20-09
SHEET 9 OF 39
6