

- CONSTRUCTION NOTES**
1. REMOVE EXISTING PAVEMENT AND CONSTRUCT NEW 150mm REINFORCED CONCRETE PAVEMENT
 2. CONSTRUCT NEW ASPHALT OVERLAY
 3. REMOVE EXISTING SIDEWALK AND CONSTRUCT NEW 100mm CONCRETE SIDEWALK (SD-228A)
 4. REMOVE EXISTING CURB AND CONSTRUCT NEW CONCRETE MOUNTABLE CURB (SD-205)
 5. INSTALL NEW MOUNTABLE CURB AND GUTTER PAVING COVER (AP-017)
 6. REMOVE EXISTING CONCRETE SIDEWALK AND INSTALL SOD

- GENERAL NOTES**
- A. PAVEMENT DIMENSIONS ARE TO BACK OF CURB
 - B. ALL CURB RADII UNDER 15.0m SHALL BE MODIFIED BARRIER (SD-203B)
 - C. CURB REPLACEMENT AS DIRECTED BY CONTRACT ADMINISTRATOR
 - D. ASPHALT TIE-INS ON APPROACHES TO BE DETERMINED IN THE FIELD BY THE CONTRACT ADMINISTRATOR
 - E. PAVEMENT REPAIRS SHOWN ARE ONLY A REPRESENTATIVE SAMPLE OF THE TENDER QUANTITIES

METRIC
WHOLE NUMBERS INDICATE MILLIMETERS
DECIMALIZED NUMBERS INDICATE METERS
BID OPPORTUNITY NO. 4-2020

EXISTING	LEGEND - PLAN	PROPOSED	EXISTING	LEGEND - PLAN	PROPOSED	EXISTING	LEGEND - PROFILE	PROPOSED
	HYDRANT			LDS/WWS			CONCRETE	
	VALVE			WATERMAIN			CONCRETE SIDEWALK	
	CURB STOP			GAS			ASPHALT	
	MANHOLE			TRAFFIC SIGNALS				
	CATCH BASIN			HYDRO/STREET LIGHT		EXISTING	LEGEND - PLAN	PROPOSED
	CURB INLET			MTS/SHAW				
	HYDRO POLE			CURB RENEWAL			WEST GUTTER	
	LIGHT STANDARD			PROPERTY LINE			CENTER LINE	
	TRAFFIC SIGNAL POLE			RAMP CURB			EAST GUTTER	
	SURVEY BAR			ELEVATIONS			WEST SIDEWALK	
	GEODETIC BENCH MARK			TREES			EAST SIDEWALK	

LOCATION APPROVED
IB @ NE CORNER OF 43 CASLON PL
231.675

UNDERGROUND STRUCTURES

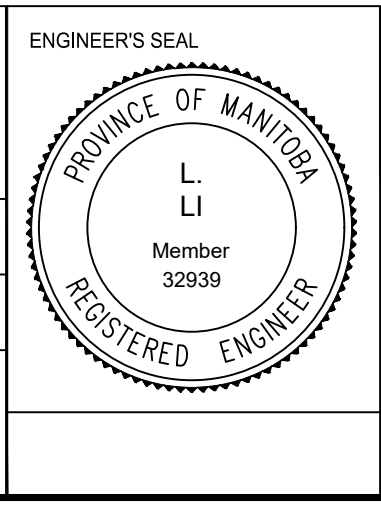
NO.	REVISIONS	DATE	BY
2.	ISSUED FOR CONSTRUCTION	14/02/20	J.W.
1.	SUBMIT FOR PLAN APPROVAL	19/12/19	J.W.

NOTE:
LOCATION OF UNDERGROUND STRUCTURES AS SHOWN ARE BASED ON THE BEST INFORMATION AVAILABLE. BUT NO GUARANTEE IS GIVEN THAT ALL EXISTING UTILITIES ARE SHOWN OR THAT THE GIVEN LOCATIONS ARE EXACT. CONFIRMATION OF EXISTENCE AND EXACT LOCATION OF ALL SERVICES MUST BE OBTAINED FROM THE INDIVIDUAL UTILITIES BEFORE PROCEEDING WITH CONSTRUCTION.

ENGINEERING DIVISION
TECHNOLOGY SERVICES BRANCH
106 - 1155 PACIFIC AVE

DESIGNED BY	E.H.	CHECKED BY	C.H.
DRAWN BY	E.H. & J.W.	APPROVED BY	

HOR. SCALE: 1 : 250
VERTICAL: 1 : 10
DATE: 2020/02/18



THE CITY OF WINNIPEG
PUBLIC WORKS DEPARTMENT

CASLON PL
FROM COUNCILLOR BAY TO COUNCILLOR BAY
ASPHALT OVERLAY AND ASSOCIATED WORKS
FROM STA. 1+00 TO STA. 2+00

CITY DRAWING NUMBER
SE-20-11
SHEET 11 OF 39
1