

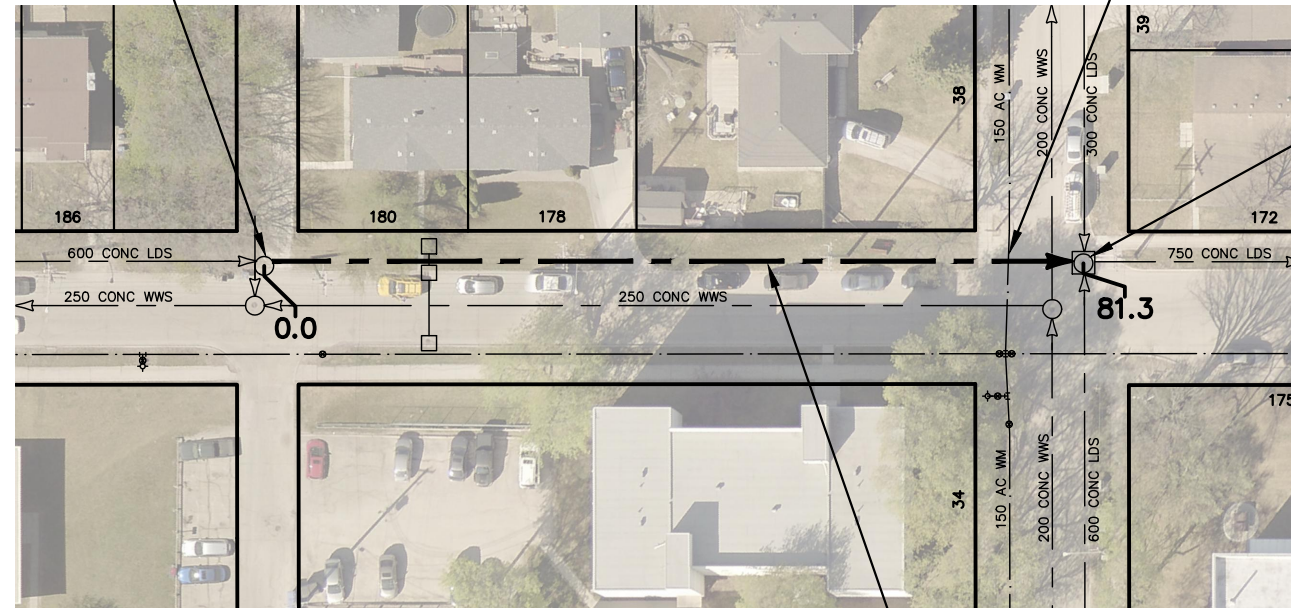
PULBERRY STREET

CAUTION: INVERT OF EX 150 AC WM THROUGH OBVERT OF MA50015276 - NO CUTTING OPERATIONS BETWEEN 71.0 TO 73.0

S-MH50012273
RIM 231.44
INV S 229.31
INV N 229.26

S-MH50012238
RIM 231.77
INV W 229.12
INV S 229.06
INV E 229.05
INV N 229.01

← ST. MICHAEL RD



BETHUNE WAY

ARDEN AVE

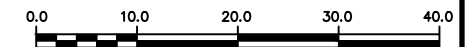
81.3 OF 600 CONC LDS TO BE LINED
S-MA50015276
(FULLY DETERIORATED)

SEWER JUNCTION INFORMATION FROM SEWER VIDEO INSPECTION		
SEWER ID S-MA50015276		
DISTANCE FROM MH ID S-MH50012273		
DISTANCE	DIAMETER	CLOCK
14.9	250	10
17.6	250	02

FOR INDEX SEE 12361

METRIC

WHOLE NUMBERS INDICATE MILLIMETRES
DECIMALIZED NUMBERS INDICATE METRES



WARNING

IF POWER EQUIPMENT OR EXPLOSIVES ARE TO BE USED FOR EXCAVATION ON THIS PROJECT THE CONTRACTOR MUST:

- 1) NOTIFY THE GAS COMPANY OF THE PROPOSED LOCATION OF EXCAVATION.
- 2) TAKE PRECAUTION TO AVOID DAMAGE TO GAS COMPANY INSTALLATIONS.

SEE PROVINCIAL REGULATION 210/72 FOR DETAILS

LOCATION APPROVED
UNDERGROUND STRUCTURES

SUPV. U/G STRUCTURES COMMITTEE DATE

NOTE:

LOCATION OF UNDERGROUND STRUCTURES AS SHOWN ARE BASED ON THE BEST INFORMATION AVAILABLE BUT NO GUARANTEE IS GIVEN THAT ALL EXISTING UTILITIES ARE SHOWN OR THAT THE GIVEN LOCATIONS ARE EXACT. CONFIRMATION OF EXISTENCE AND EXACT LOCATION OF ALL SERVICES MUST BE OBTAINED FROM THE INDIVIDUAL UTILITIES BEFORE PROCEEDING WITH CONSTRUCTION.

B.M.
ELEV.

NO.	REVISIONS	YY/MM/DD	BY



DESIGNED BY	JKH	CHECKED BY	HAK
DRAWN BY	DML	APPROVED BY	BWB
SCALE:		RELEASED FOR CONSTRUCTION	
HORIZONTAL	1:750		
VERTICAL		STACY COURNOYER	
DATE	2019/12/16	DATE	2020/03/02

ENGINEER'S SEAL

ORIGINAL SIGNED
BY H.A. KATZ
2020 03 02

CONSULTANT DRAWING NUMBER



THE CITY OF WINNIPEG
WATER AND WASTE DEPARTMENT
ENGINEERING DIVISION

2020 SEWER RENEWALS BY CIPP LINING (LARGE DIAMETER)

CONTRACT 3
PULBERRY STREET
MH AT BETHUNE WAY TO
MH AT ARDEN AVENUE

SHEET 15 OF 17

CITY DRAWING NUMBER

12374