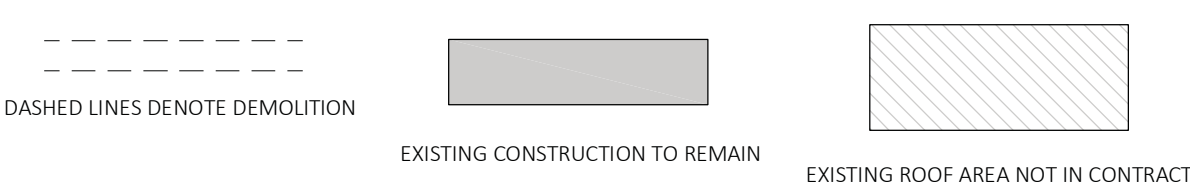


1 Roof Demolition Plan
1/8" = 1'-0"

DEMOLITION GENERAL NOTES

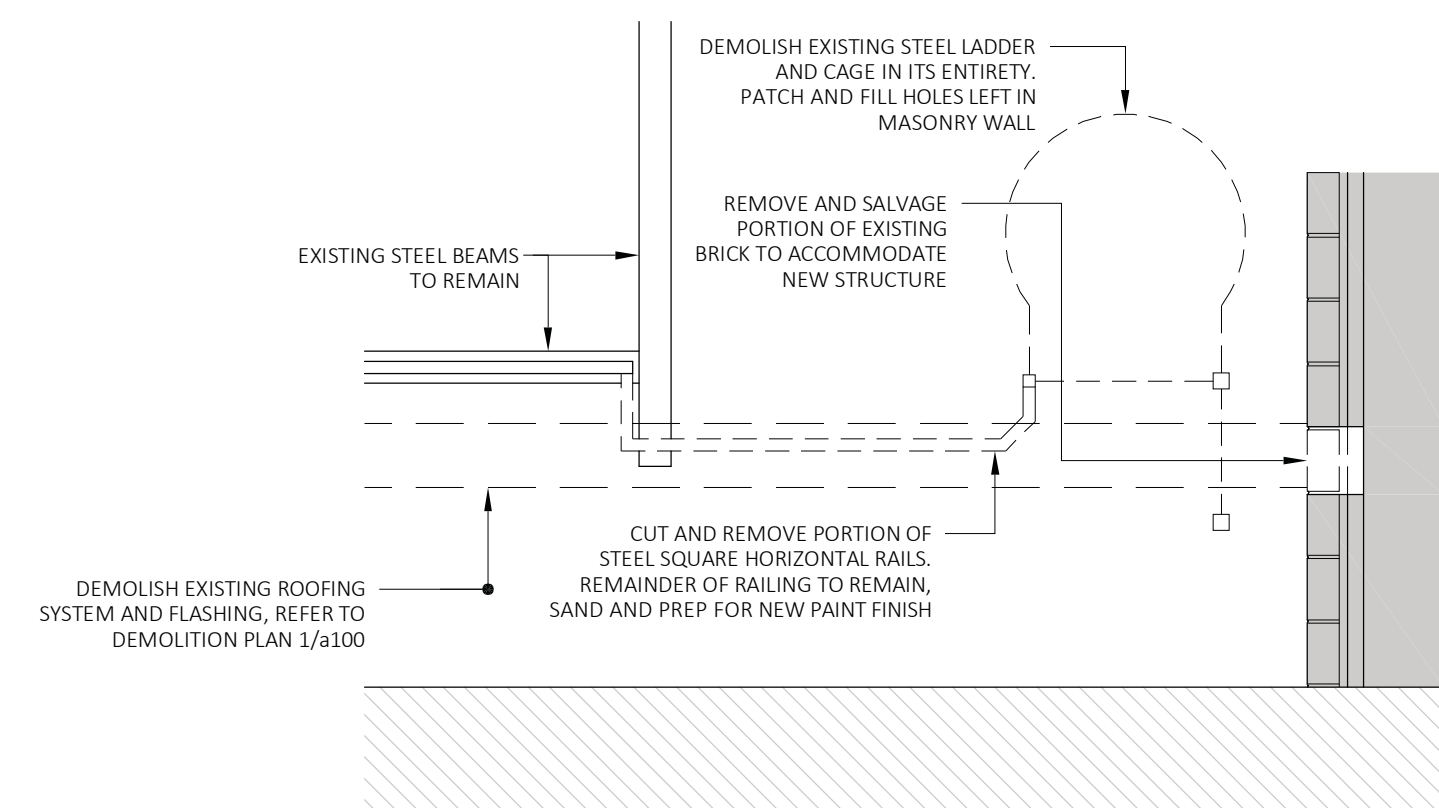
1. REFER TO STRUCTURAL, MECHANICAL AND ELECTRICAL FOR ADDITIONAL DEMOLITION WORK.
2. ALL DEMOLITION ITEMS TO BE REMOVED FROM SITE.
3. DRAWINGS INDICATE APPROXIMATE LOCATION AND EXTENT OF EXISTING ELEMENTS TO BE DEMOLISHED. CONTRACTOR IS RESPONSIBLE TO REVIEW AND CONFIRM EXISTING CONDITIONS AND QUANTITIES.
4. PATCH AND MAKE GOOD ALL SURFACES AFFECTED BY DEMOLITION SCHEDULED TO REMAIN. USE MATERIALS TO MATCH EXISTING.

DEMOLITION LEGEND



DEMOLITION NOTES

1. DEMOLISH EXISTING ROOFING SYSTEM DOWN TO CONCRETE TOPPING. SCRAPE AND REMOVE ANY REMAINING MASTIC RESIDUE FROM CONCRETE DECK SURFACE. PREP EXISTING SURFACE AS REQUIRED TO ACCOMMODATE NEW MEMBRANE.
2. DEMOLISH EXISTING INTERIOR FLASHING AROUND ALL ROOF AREAS INCLUDING MEMBRANES AND CANT STRIP. STONE PARAPET CAPPING, WALL CLADDING AND WALL CONSTRUCTION TO REMAIN. REFER TO DETAILS. CLEAN ALL REMOVE ANY REMAINING ROOFING MEMBRANES / RESIDUE OFF OF EXISTING CONSTRUCTION TO REMAIN.
3. DEMOLISH EXISTING ROOF DRAINS. INTERNAL DRAIN PIPING TO REMAIN UNLESS NOTED OTHERWISE, REFER TO MECHANICAL.
4. DEMOLISH ABANDONED CURBING IN ITS ENTIRETY.
5. DEMOLISH EXISTING CURBING BELOW EXISTING MECHANICAL UNITS IN ITS ENTIRETY. REFER TO MECHANICAL AND ELECTRICAL TO ADDRESS EXISTING UNITS AND ADJACENT SERVICES.
6. STEEL FRAMING SUPPORTING COURTYARD SPOT LIGHTING TO BE DEMOLISHED IN ITS ENTIRETY.
7. DEMOLISH EXISTING ABANDONED PITCH POCKET / FLASHING AND CURB CONSTRUCTION.
8. DEMOLISH EXISTING COLLAR AROUND ROOF VENTING, TYPICAL FOR ALL, REFER TO MECHANICAL.
9. DEMOLISH EXISTING STEEL COLUMN AND BEAM HOIST FRAMING. PATCH EXISTING WALL MASONRY TO REMAIN.
10. DEMOLISH EXISTING PITCH POCKET. EXISTING SERVICES TO REMAIN. INFILL OPENING WITHIN EXISTING ROOF DECKING AS REQUIRED TO REDUCE SIZE OF OPENING FOR REMAINING SERVICES.
11. DEMOLISH EXISTING CURBING BELOW MECHANICAL ROOF HOOD, REFER TO MECHANICAL FOR REMOVAL OF UNIT.
12. REMOVE, CUT AND MODIFY EXISTING STEEL POST BASE FOR MECHANICAL DEVICE TO ACCOMMODATE NEW ROOFING WORK.
13. DEMOLISH EXISTING METAL FLASHING OVER FLOW SCUPPER.
14. DEMOLISH EXISTING LIGHT SENSOR AND LIGHTING, REFER TO ELECTRICAL.
15. EXISTING ELECTRICAL PANELS.
16. EXISTING MECHANICAL UNIT AND STEEL BEAM SUPPORT FRAMING TO REMAIN.
17. DEMOLISH EXISTING STEEL ROOF ACCESS LADDER AND PORTION OF ADJACENT RAIL CONSTRUCTION. REFER TO ENLARGED DETAIL 2/a100.
18. EXISTING WALL MOUNTED MECHANICAL UNIT TO REMAIN. COORDINATE REMOVAL OF EXISTING SUPPORT CONSTRUCTION WITH NEW STRUCTURAL SUPPORT. REFER TO STRUCTURAL.
19. DEMOLISH EXISTING CURBING FOR STAND PIPE SYSTEM AND MODIFY EXISTING STEEL SUPPORTS, PIPING TO REMAIN.
20. DEMOLISH EXISTING ABANDONED TANK. CONFIRM WITH CITY OF WINNIPEG.
21. DEMOLISH EXISTING CURBING AROUND GENERATOR EXHAUST. COORDINATE EXTENT OF REMOVAL WITH MECHANICAL.



2 Ladder Demolition
1/2" = 1'-0"