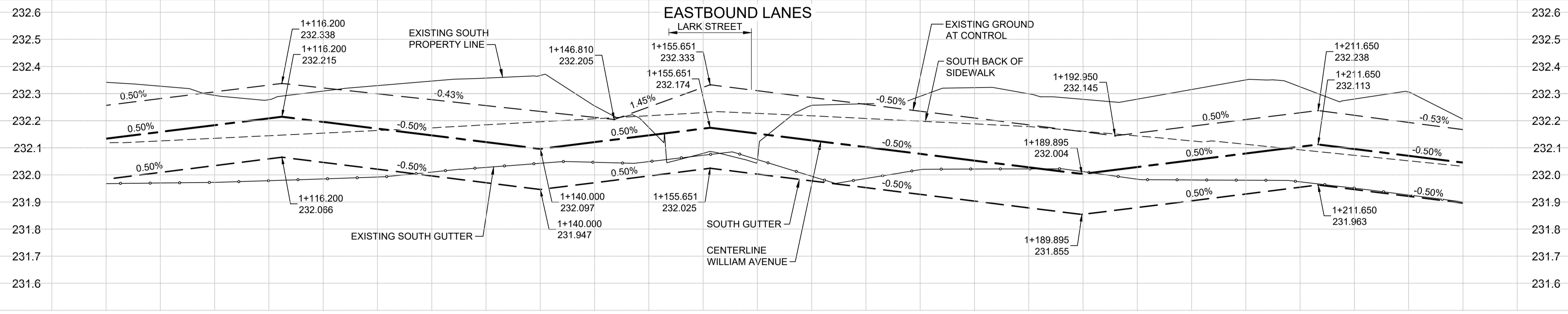
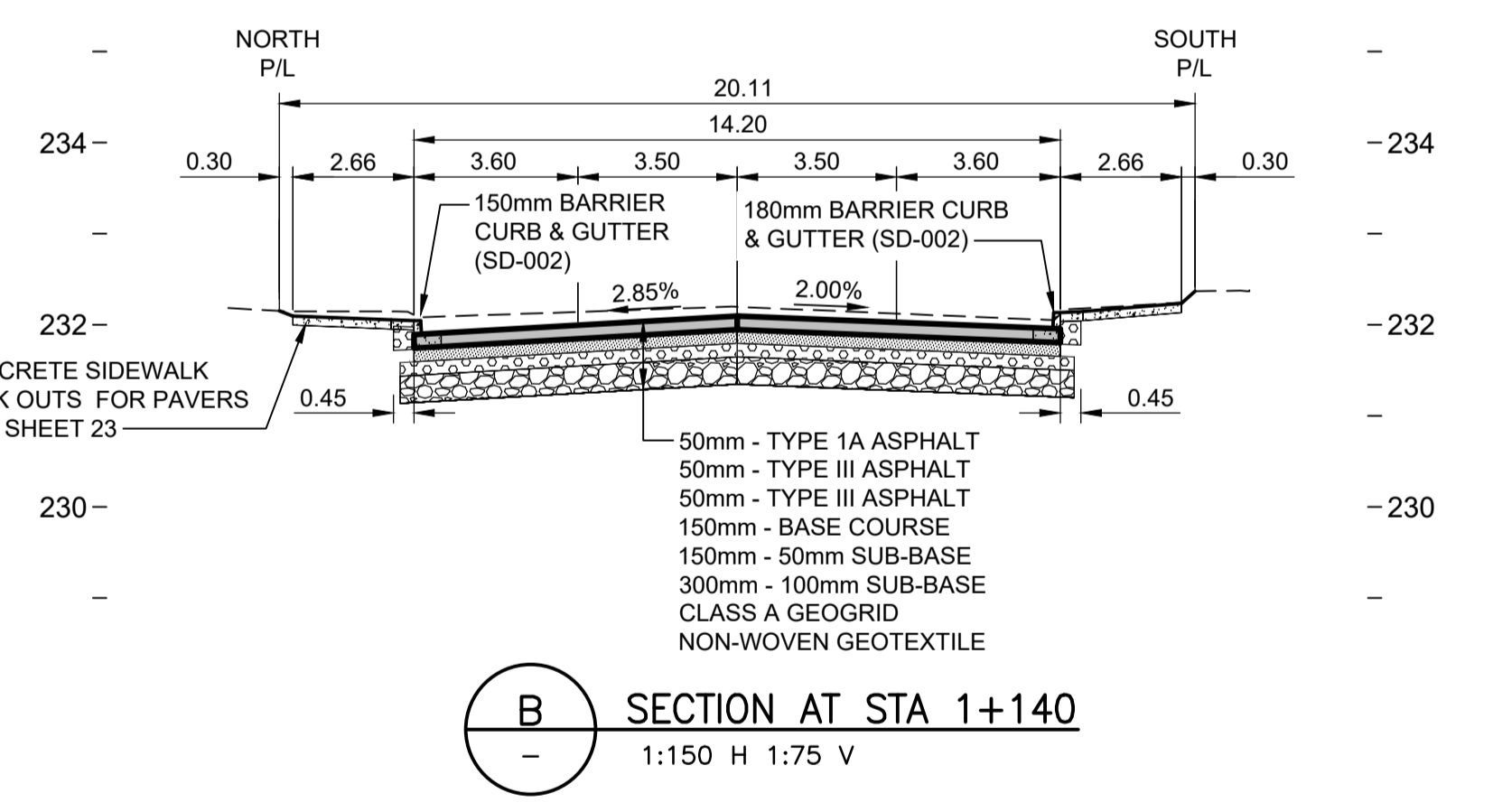
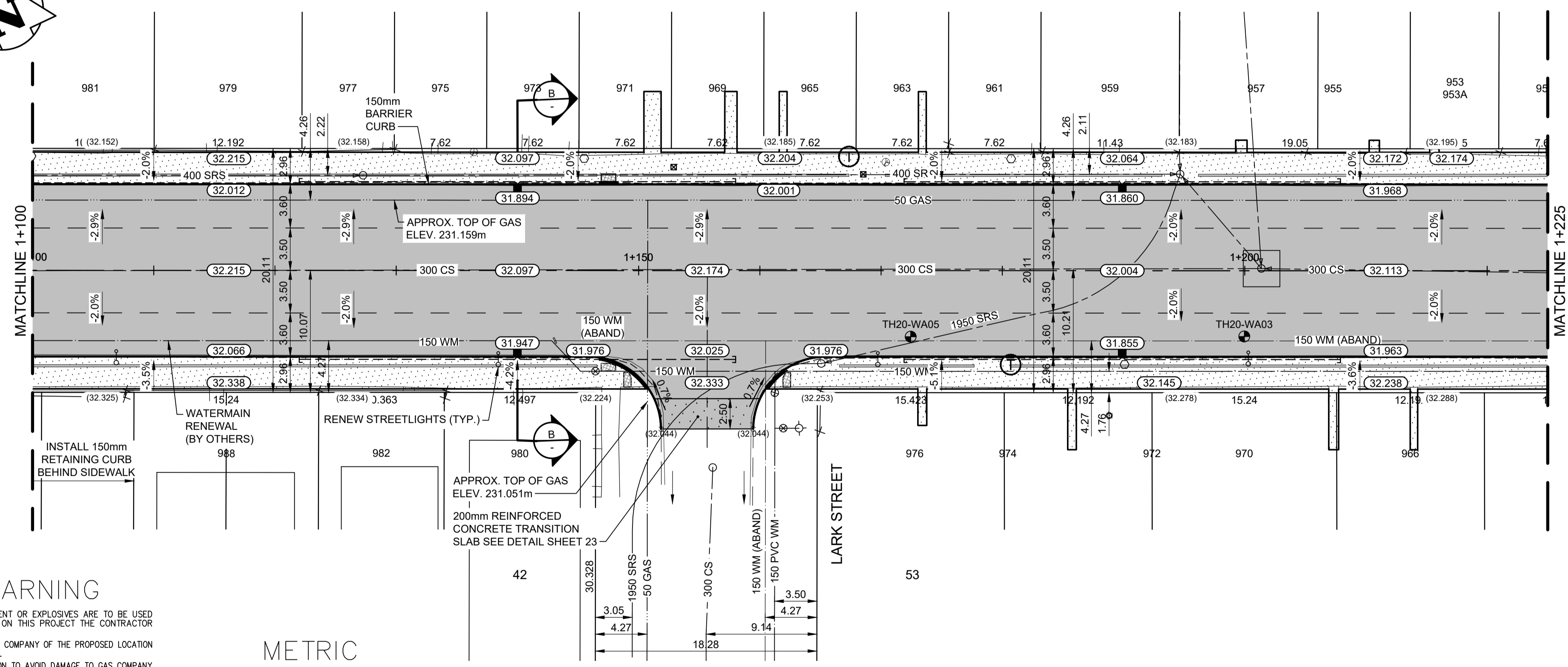
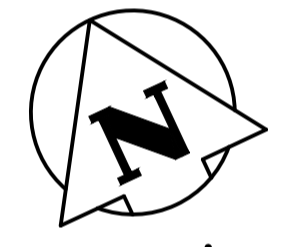


- NOTES:**
- ADJUST EXISTING MANHOLES AS REQUIRED.
 - ADJUST ALL AFFECTED EXISTING WATERMAIN AND WATER SERVICE VALVES TO GRADE.
 - FOR CB'S, LEADS AND UNDERGROUND INFO, SEE SHEETS 50 & 51.
 - INSTALL 18m OF SUBDRAIN EACH SIDE OF LOW POINTS AS PER SD-245 c/w CAPPED ENDS.
 - PRIVATE APPROACHES ARE 200mm REINFORCED CONCRETE WITH 75mm BASE COURSE, 225mm-50mm SUB-BASE AND NON-WOVEN GEOTEXTILE.
 - BULLNOSES, APPROACHES AND INTERSECTION RADII ARE TO BE INTEGRAL MODIFIED BARRIER CURB.
 - FOR TRANSIT STOPS, SEE BLUE TRANSIT DETAIL, SHEET 23.



1+100 1+150 1+200

WILLIAM AVENUE



WARNING

IF POWER EQUIPMENT OR EXPLOSIVES ARE TO BE USED FOR EXCAVATION ON THIS PROJECT THE CONTRACTOR MUST:
 1) NOTIFY THE GAS COMPANY OF THE PROPOSED LOCATION OF EXCAVATION.
 2) TAKE PRECAUTION TO AVOID DAMAGE TO GAS COMPANY INSTALLATIONS.
 SEE PROVINCIAL REGULATION 140/92 FOR DETAILS

METRIC

WHOLE NUMBERS INDICATE MILLIMETRES
 DECIMALIZED NUMBERS INDICATE METRES

| EXISTING | LEGEND-PLAN | PROPOSED | EXISTING | LEGEND-PLAN | PROPOSED | EXISTING | LEGEND-PROFILE | PROPOSED |
|----------------------|---------------------|----------|---------------------|-------------|----------|----------|----------------------|----------|
| 150 WM | WATERMAIN | 150 WM | HYDRO | M.T.S. | --- | --- | NORTH OR WEST GUTTER | --- |
| HYDRANT | VALVE | --- | CONCRETE | --- | --- | --- | SOUTH OR EAST GUTTER | --- |
| 300 LIDS | LAND DRAINAGE SEWER | 300 LIDS | ASPHALT | --- | --- | --- | NORTH MEDIAN GUTTER | --- |
| 750 WWS | WASTE WATER SEWER | 750 WWS | SIDEWALK | --- | --- | --- | SOUTH MEDIAN GUTTER | --- |
| MANHOLE | --- | --- | ASPHALT MILL & FILL | --- | --- | --- | NORTH OR WEST P/L | --- |
| CATCH BASIN | --- | --- | STREET LIGHT | --- | --- | --- | SOUTH OR EAST P/L | --- |
| CURB INLET/CATCH PIT | --- | --- | HYDRO POLE | --- | --- | --- | --- | --- |
| TRANSIT STOP | --- | --- | SURVEY BAR | --- | --- | --- | --- | --- |
| GAS | --- | (31.334) | ELEVATION | --- | (32.231) | --- | --- | --- |
| PROPERTY LINE | --- | --- | SIDEWALK RAMP | --- | --- | --- | --- | --- |

LOCATION APPROVED UNDERGROUND STRUCTURES

SUPV. U/G STRUCTURES COMMITTEE DATE

NOTE:
 LOCATION OF UNDERGROUND STRUCTURES AS SHOWN ARE BASED ON THE BEST INFORMATION AVAILABLE BUT NO GUARANTEE IS GIVEN THAT ALL EXISTING UTILITIES ARE SHOWN OR THAT THE GIVEN LOCATIONS ARE EXACT. CONFIRMATION OF EXISTENCE AND EXACT LOCATION OF ALL SERVICES MUST BE OBTAINED FROM THE INDIVIDUAL UTILITIES BEFORE PROCEEDING WITH CONSTRUCTION.

B.M. ELEV.

| | | | |
|---|----------------------------------|----------|--------|
| 2 | ISSUED FOR TENDER | 21.03.05 | S.R.S. |
| 1 | ISSUED FOR U/G STRUCTURES REVIEW | 21.01.13 | S.R.S. |
| 0 | ISSUED FOR PRELIMINARY REVIEW | 20.07.10 | S.R.S. |

NO. REVISIONS DATE BY

Stantec
 500 - 311 Portage Avenue, Winnipeg MB Canada
 www.stantec.com

DESIGNED BY: M.E.E. CHECKED BY: M.E.E.
 DRAWN BY: A.M. APPROVED BY: S.R.S.

HOR. SCALE: 1:250
 VERTICAL: 1:10

RELEASED FOR CONSTRUCTION: 20/05/15

PRELIMINARY DRAWING

NOT TO BE USED FOR CONSTRUCTION

CONSULTANT DRAWING NO. C-231

THE CITY OF WINNIPEG
 PUBLIC WORKS DEPARTMENT
 ENGINEERING DIVISION

2021-2022 - SELKIRK AVE AND WILLIAM AVE
 PAVEMENT RENUELS
 WILLIAM AVENUE
 STA 1+100 TO STA 1+225
 ROAD WORKS - RECONSTRUCTION

SHEET 20 OF 29
 CAD FILE DRAWING NUMBER 08150c-230.dwg
 CITY DRAWING NUMBER P-3534-3

V:\1171\2021\1171081\0300_drawing\0302_drawing\0302.dwg
 2021/03/02 2:27 AM
 User: C:\Users\...