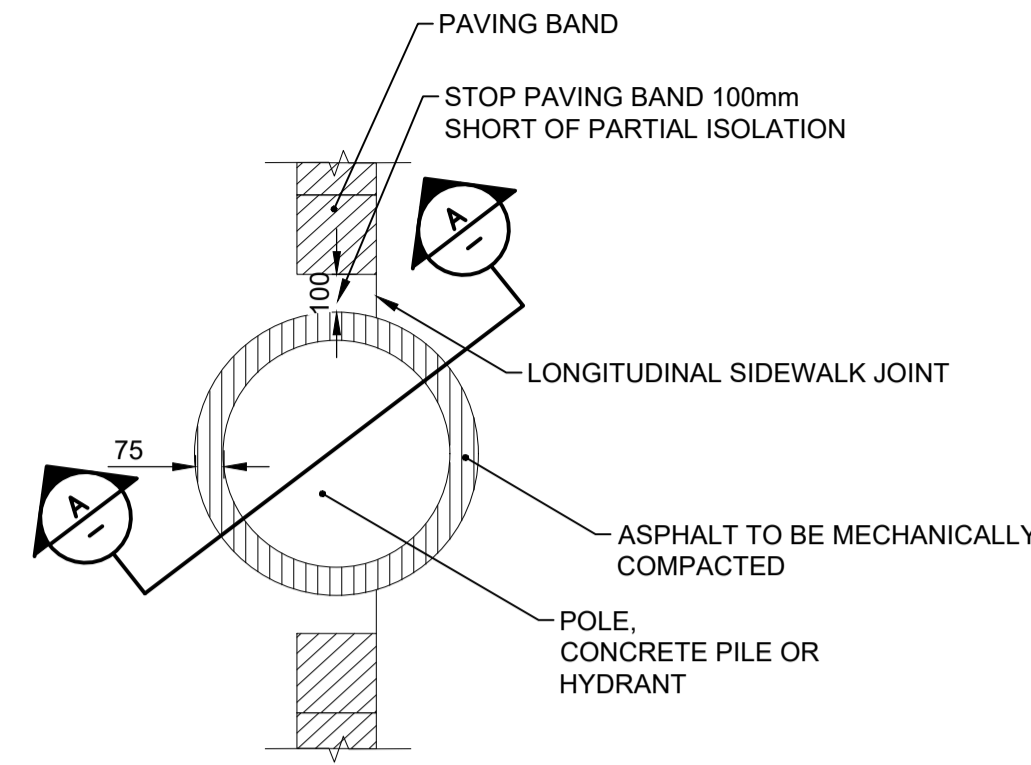
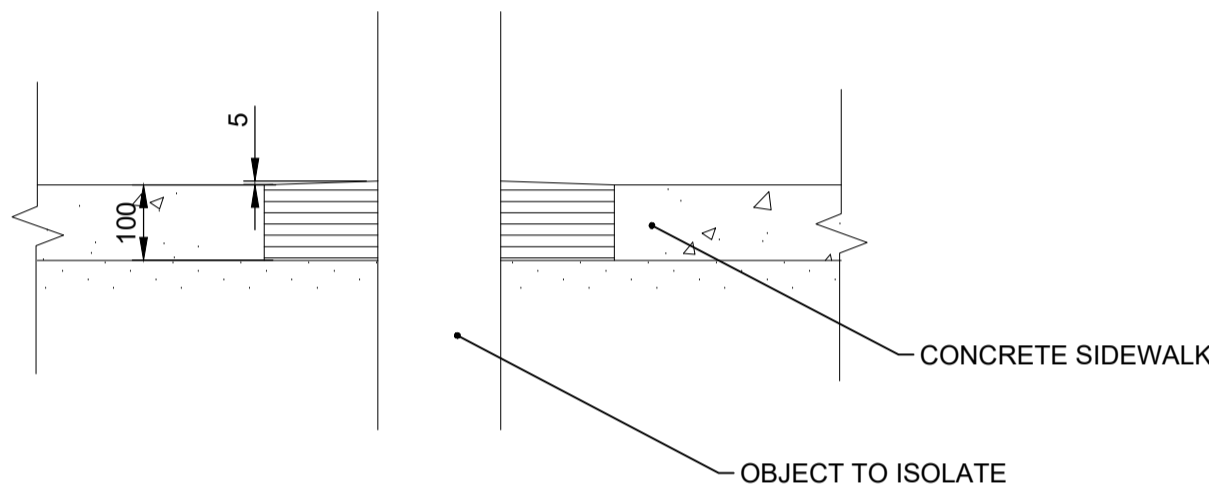


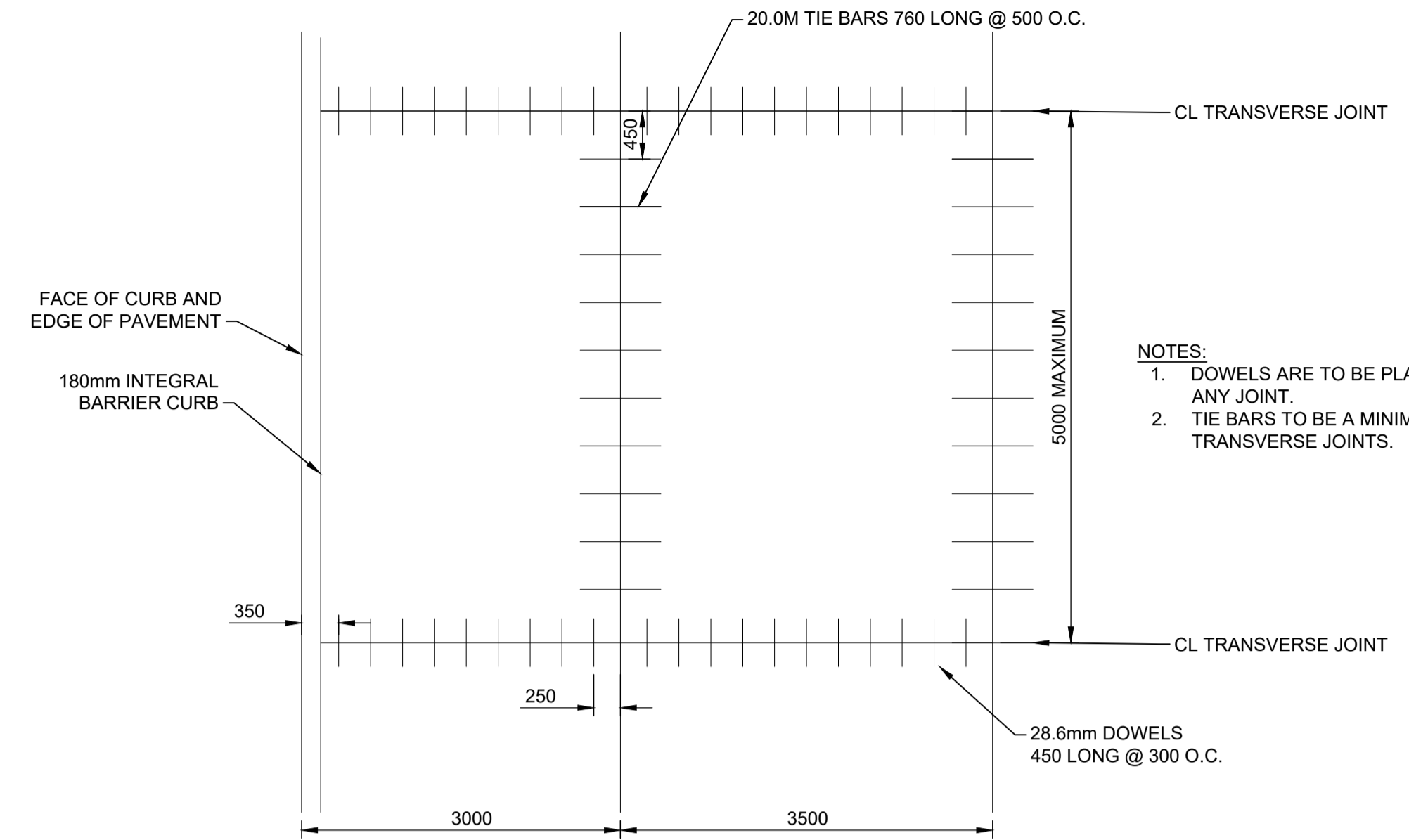
**1** SIDEWALK PAVING BAND SELKIRK & WILLIAM AVENUE  
1:20



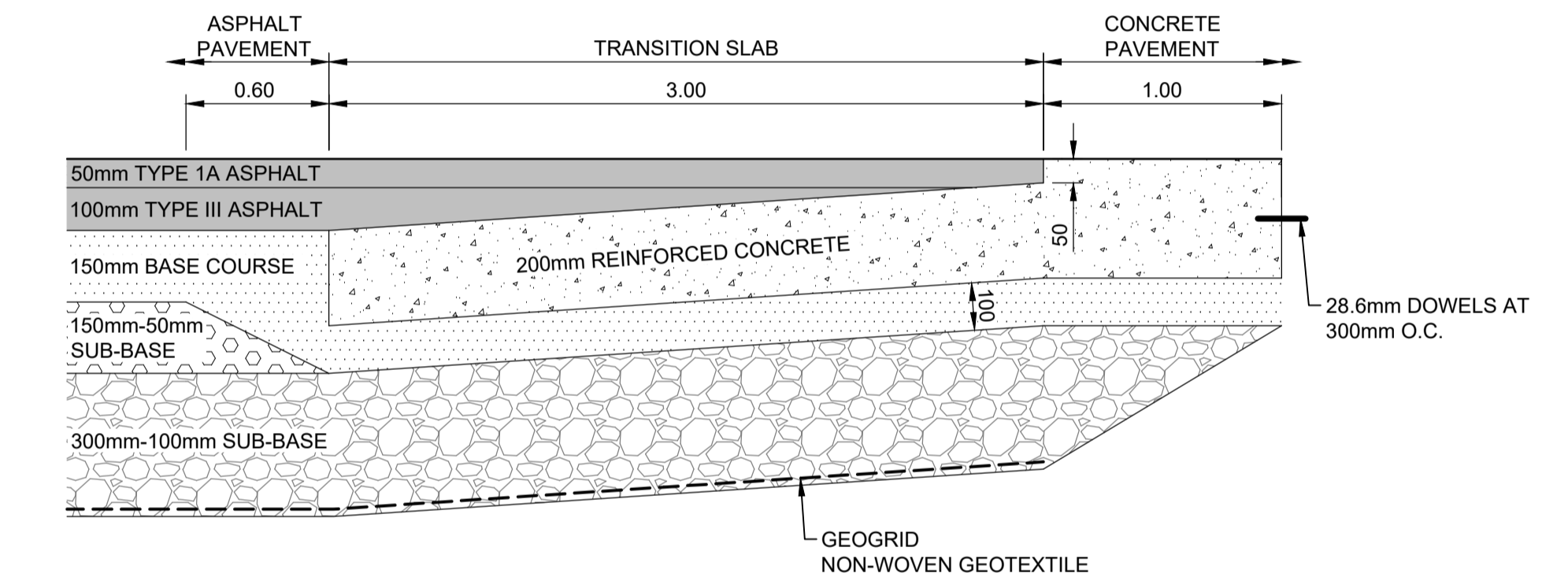
**2** TYPICAL SIDEWALK ISOLATIONS  
1:20



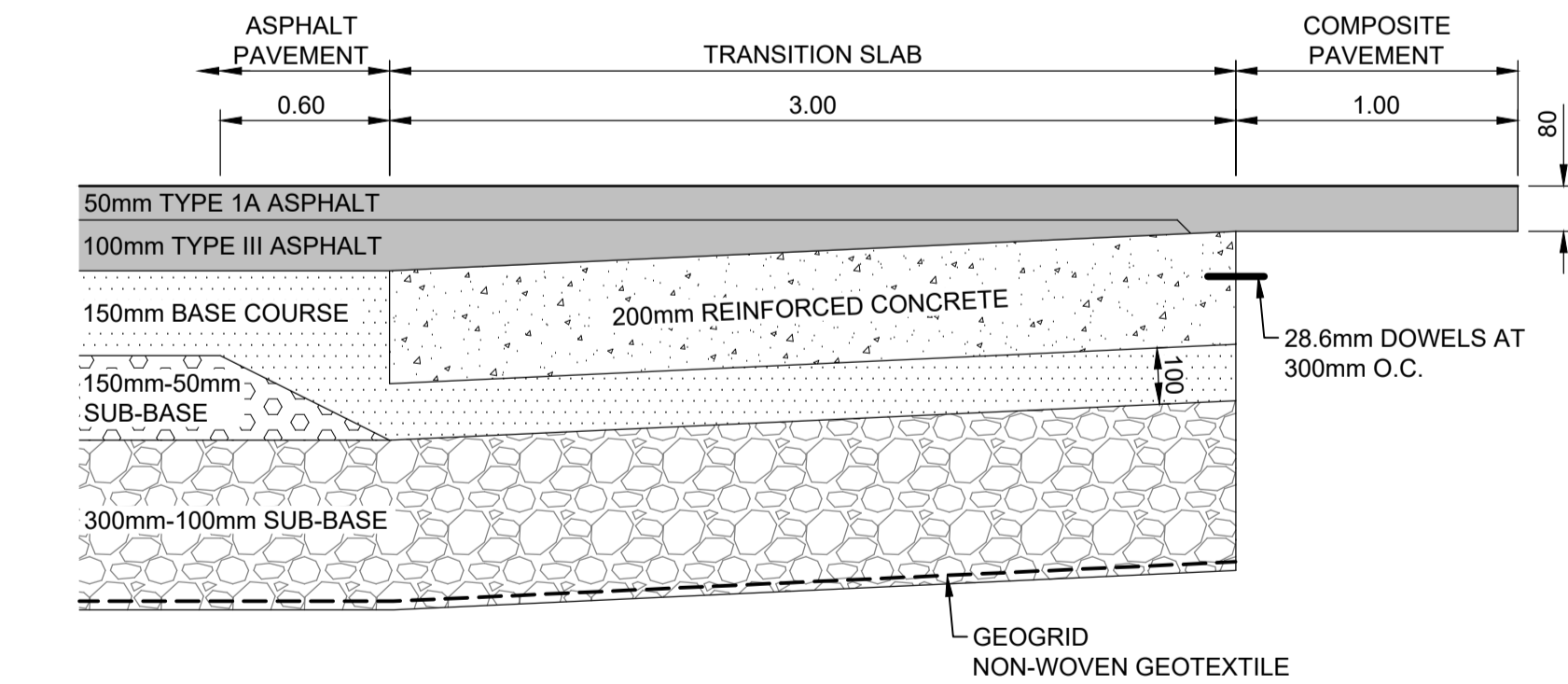
**A** SECTION  
1:20



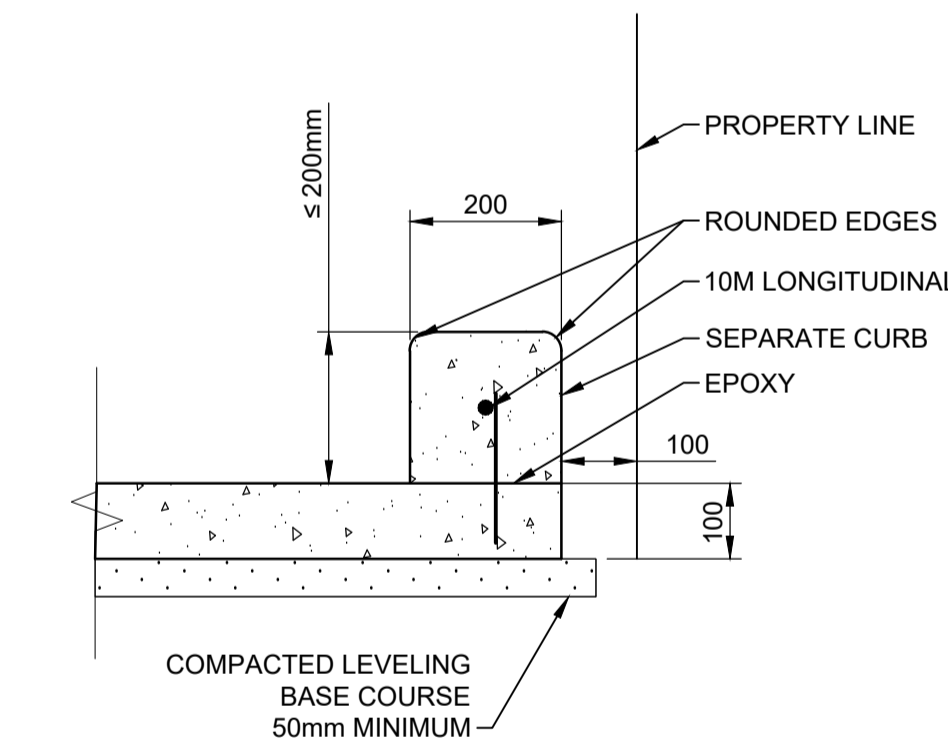
**3** SELKIRK AVENUE CONCRETE PAVEMENT WITH DOWELLED JOINTS  
1:50



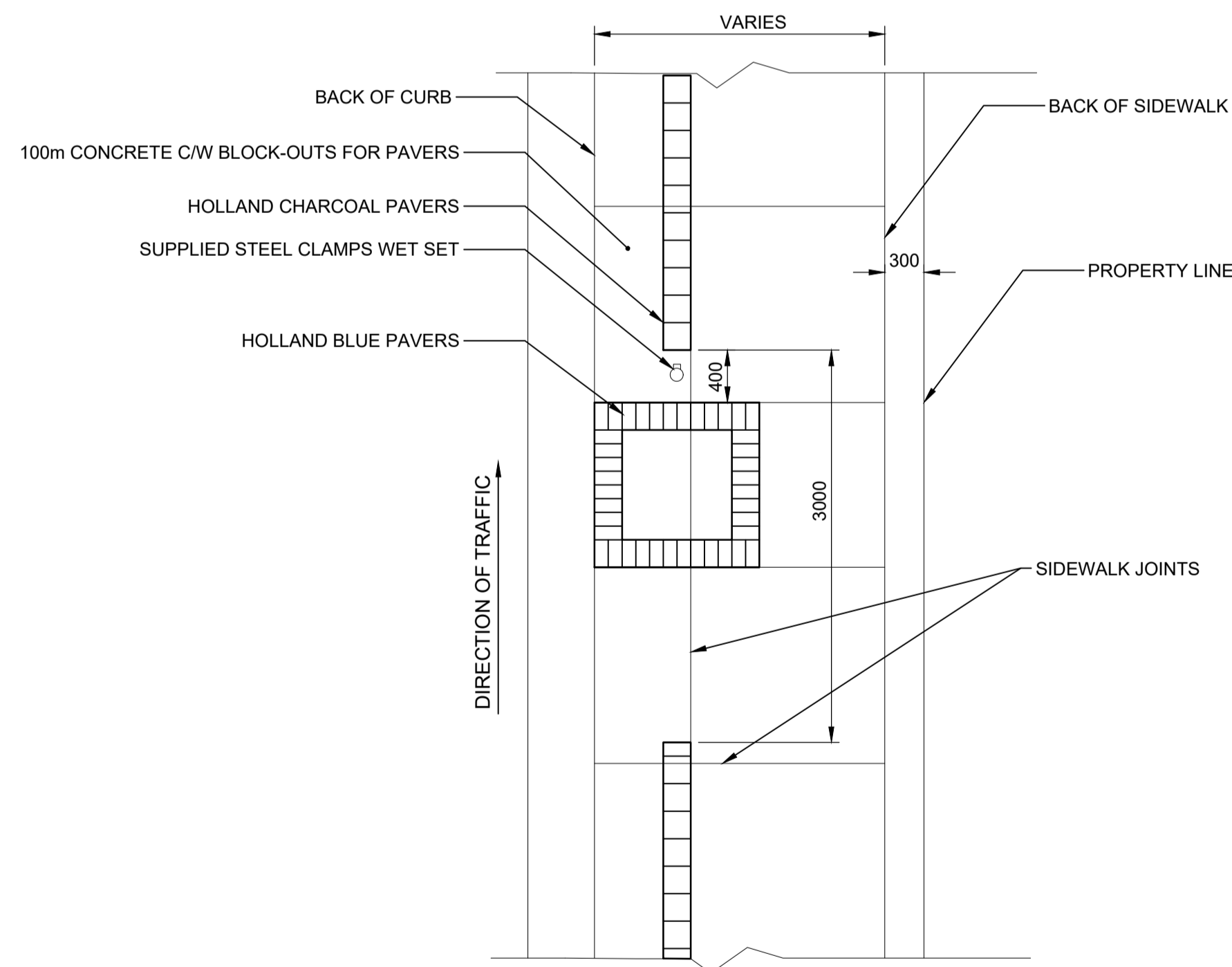
**6** TRANSITION SLAB DETAIL - ASPHALT TO CONCRETE  
(LARK STREET AT WILLIAM AVENUE)  
N.T.S.



**7** TRANSITION SLAB DETAIL - ASPHALT TO COMPOSITE PAVEMENT  
(WILLIAM AVENUE AT ARLINGTON STREET)  
N.T.S.



**4** RETAINING CURB <200mm  
1:10



**5** TYPICAL TRANSIT STOP AND PAVER DETAIL  
1:40

**WARNING**

IF POWER EQUIPMENT OR EXPLOSIVES ARE TO BE USED FOR EXCAVATION ON THIS PROJECT THE CONTRACTOR MUST:  
1) NOTIFY THE GAS COMPANY OF THE PROPOSED LOCATION OF EXCAVATION.  
2) TAKE PRECAUTION TO AVOID DAMAGE TO GAS COMPANY INSTALLATIONS.  
SEE PROVINCIAL REGULATION 140/92 FOR DETAILS

**METRIC**

WHOLE NUMBERS INDICATE MILLIMETRES  
DECIMALIZED NUMBERS INDICATE METRES

150 WM	WATERMAIN	150 WM	HYDRO	PROFILE	LOCATION APPROVED UNDERGROUND STRUCTURES
⊕	HYDRANT	⊕	M.T.S.	---	NORTH OR WEST GUTTER
⊕	VALVE	⊕	CONCRETE	---	SOUTH OR EAST GUTTER
---	LAND DRAINAGE SEWER	---	ASPHALT	---	NORTH MEDIAN GUTTER
---	WASTE WATER SEWER	---	SIDEWALK	---	SOUTH MEDIAN GUTTER
○	MANHOLE	●	ASPHALT MILL & FILL	---	NORTH OR WEST P.L.
□	CATCH BASIN	■	STREET LIGHT	---	SOUTH OR EAST P.L.
▽	CURB INLET/CATCH PIT	▽	HYDRO POLE	---	
○	TRANSIT STOP	○	SURVEY BAR	---	
---	GAS	---	ELEVATION	---	
---	PROPERTY LINE	---	SIDEWALK RAMP	---	
---	LEGEND-PLAN	---	LEGEND-PLAN	---	LEGEND-PROFILE
---	PROPOSED	---	PROPOSED	---	PROPOSED

NO.	REVISIONS	DATE	BY
2	ISSUED FOR TENDER	21.03.05	S.R.S.
1	ISSUED FOR U/G STRUCTURES REVIEW	21.01.13	S.R.S.
0	ISSUED FOR PRELIMINARY REVIEW	20.07.10	S.R.S.

DESIGNED BY	M.E.E.	CHECKED BY	S.R.S.
DRAWN BY	A.M.	APPROVED BY	S.R.S.
HOR. SCALE:	1:250	RELEASED FOR CONSTRUCTION:	
VERTICAL:	1:10	DATE	20/05/15

**Stantec**  
500 - 311 Portage Avenue, Winnipeg MB Canada  
www.stantec.com

ENGINEER'S SEAL  
**PRELIMINARY DRAWING**  
NOT TO BE USED FOR CONSTRUCTION  
CONSULTANT DRAWING NO. C-502

**THE CITY OF WINNIPEG**  
PUBLIC WORKS DEPARTMENT  
ENGINEERING DIVISION

2021-2022 - SELKIRK AVE AND WILLIAM AVE  
PAVEMENT RENEWALS

MISCELLANEOUS SECTIONS AND DETAILS

SHEET 25 OF 29  
CAD FILE DRAWING NUMBER 08150c-502.dwg  
CITY DRAWING NUMBER P-3534-8

**ENGINEERS GEOSCIENTISTS MANITOBA**  
Certificate of Authorization  
Stantec Consulting Ltd.  
No. 1301

VA 1171 rev 04/11 1:07:01 03/03/2021 drawing 0302 sheet file:072\_civil 08150c-502.dwg 2021.03.02 2:35 AM A:\S\A\8\A\8.dwg