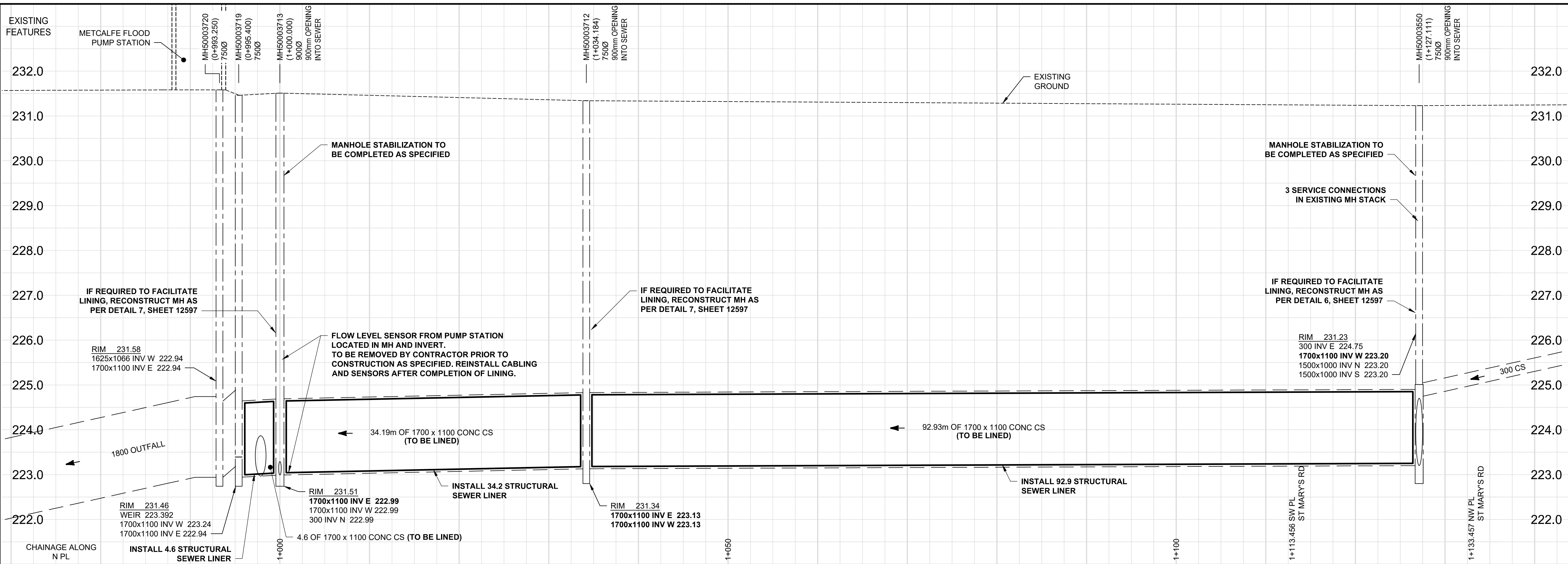


D SIZE 22" x 34" (559mm x 864mm)

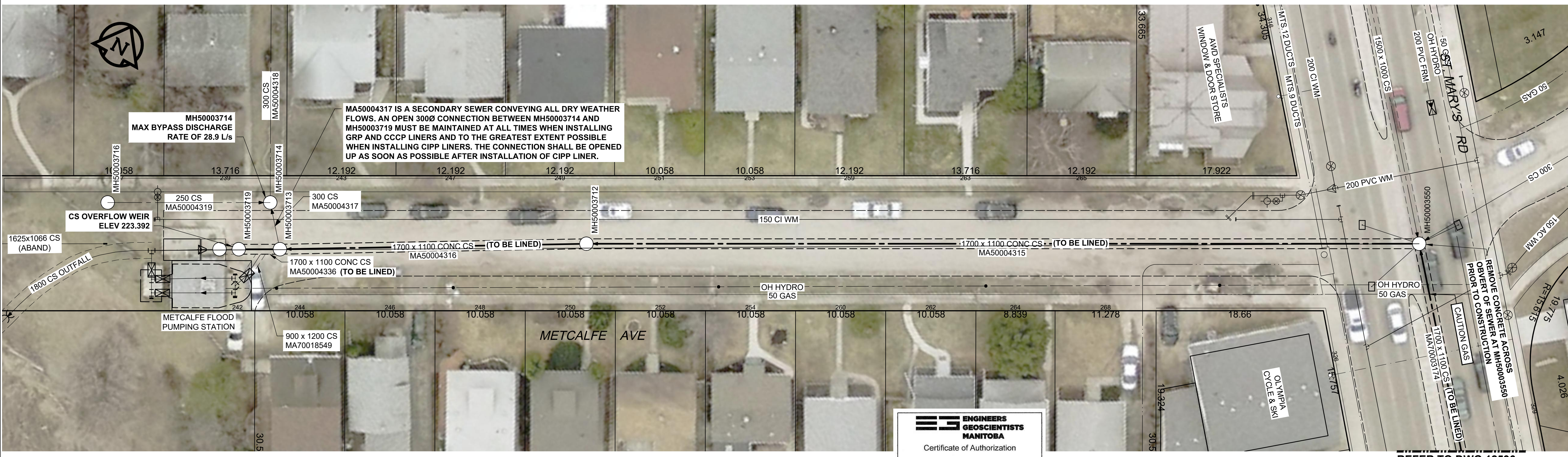
PLOT: 10/20/2020 2:16:15 PM

AECOM FILE NAME: 60622950-SHT-00-0000-C-1004.dwg Saved By: ccooperkl



SEWER JUNCTION INFORMATION

SERVICE COUNT	STATION	CLOCK
1	1001.584	12
2	1004.484	2
3	1010.684	9
4	1018.584	3
5	1020.884	10
6	1029.584	12
7	1031.684	11
8	1047.111	11
9	1048.311	2
10	1059.511	10
11	1063.811	2
12	1070.811	11
13	1082.811	1
14	1082.811	11
15	1085.911	11
16	1112.111	11



SEWER REHABILITATION NOTES:

- INSTALL ONE OF THE FOLLOWING REHABILITATION SYSTEMS:
 - CIPP
 - GRP
 - CSCP
- EXISTING SEWER DETERIORATION STATES:
 - MA50004316 - PARTIALLY DETERIORATED
 - MA50004315 - PARTIALLY DETERIORATED
 - MA50004336 - PARTIALLY DETERIORATED
- MINIMUM POST LINING DIMENSIONS:
 - MA50004316 - 1487mm x 887mm
 - MA50004315 - 1487mm x 887mm
 - MA50004336 - 1487mm x 887mm
- EXTEND REHABILITATION SYSTEM TO THE EDGE OF THE EXISTING MANHOLE OPENINGS AS SHOWN IN DETAIL 2, SHEET 12597.
- CIPP REHABILITATION SHALL UTILIZE A PIPE ACCESS SHAFT AT ONE OF THE EXISTING MANHOLES, IF REQ'D.
- GRP AND CSCP REHABILITATION MAY UTILIZE A PIPE ACCESS SHAFT AT EITHER OF THE EXISTING MANHOLES OR AT A MID POINT.
- SEE PIPELINE CLOSURE AND MANHOLE RECONSTRUCTION DETAILS ON SHEET 12597.

GENERAL CONSTRUCTION NOTES:

- RESTORE SITE TO EXISTING CONDITIONS UPON COMPLETION OF WORK.
- TRAFFIC CONTROL:
 - REGIONAL STREET LANE CLOSURE REQUIRED: YES
 - IMPACTED REGIONAL STREET: ST. MARY'S ROAD
 - BUS ROUTE
 - MAINTAIN MINIMUM ONE LANE OF TRAFFIC IN BOTH DIRECTIONS ON ST. MARY'S ROAD AT ALL TIMES.

METRIC
WHOLE NUMBERS INDICATE MILLIMETRES
DECIMALIZED NUMBERS INDICATE METRES

EXISTING	LEGEND - PLAN	NEW	EXISTING	LEGEND - PLAN	NEW	EXISTING	LEGEND - PROFILE	NEW
150 WM	WATERMAIN	150 WM	150 WM	WATERMAIN	150 WM	150 WM	WATERMAIN	150 WM
300 LDS	LAND DRAINAGE SEWER	300 LDS	300 LDS	LAND DRAINAGE SEWER	300 LDS	300 LDS	LAND DRAINAGE SEWER	300 LDS
250 WWS	WASTE WATER SEWER	250 WWS	250 WWS	WASTE WATER SEWER	250 WWS	250 WWS	WASTE WATER SEWER	250 WWS
○	MANHOLE	●	○	MANHOLE	●	○	MANHOLE	●
□	CATCH BASIN	■	□	CATCH BASIN	■	□	CATCH BASIN	■
△	CURB INLET	▲	△	CURB INLET	▲	△	CURB INLET	▲
▭	CULVERT	▭	▭	CULVERT	▭	▭	CULVERT	▭
—	PIPE ABANDONMENTS	—	—	PIPE ABANDONMENTS	—	—	PIPE ABANDONMENTS	—
+	SURVEY BAR	+	+	SURVEY BAR	+	+	SURVEY BAR	+
—	LEGEND - PLAN	—	—	LEGEND - PLAN	—	—	LEGEND - PROFILE	—

LOCATION APPROVED
UNDERGROUND STRUCTURES

SUPR. U/G STRUCTURES DATE COMMITTEE

NOTE:
LOCATION OF UNDERGROUND STRUCTURES AS SHOWN ARE BASED ON THE BEST INFORMATION AVAILABLE. BUT NO GUARANTEE IS GIVEN THAT ALL EXISTING UTILITIES ARE SHOWN OR THAT THE GIVEN LOCATIONS ARE EXACT. CONFIRMATION OF EXISTENCE AND EXACT LOCATION OF ALL SERVICES MUST BE OBTAINED FROM THE INDIVIDUAL UTILITIES BEFORE PROCEEDING WITH CONSTRUCTION.

**ENGINEERS
GEOSCIENTISTS
MANITOBA**

Certificate of Authorization
AECOM Canada Ltd.
No. 4671 Date: Oct 20/20

AECOM

DESIGNED BY: TJB
CHECKED BY: CCM
DRAWN BY: KLC
APPROVED BY: KWF
HOR. SCALE: 1:250
VERT. SCALE: 1:50
RELEASED FOR CONSTRUCTION: [Signature]
DATE: Oct 16/20

PROFESSIONAL'S SEAL
PROVINCE OF MANITOBA
A.D. BRAUN
Member
24483
2017
REGISTERED PROFESSIONAL ENGINEER

CONSULTANT DRAWING NO.
60622950-SHT-00-0000-C-1004

**THE CITY OF WINNIPEG
WATER AND WASTE DEPARTMENT**

2020 TRENCHLESS REHABILITATION OF
NON-CIRCULAR COMBINED SEWERS
CONTRACT 2
PLAN / PROFILE
METCALFE AVENUE

SHEET 4 OF 6
CITY DRAWING NUMBER
12595
REV 0

TENDER NO. 459-2020