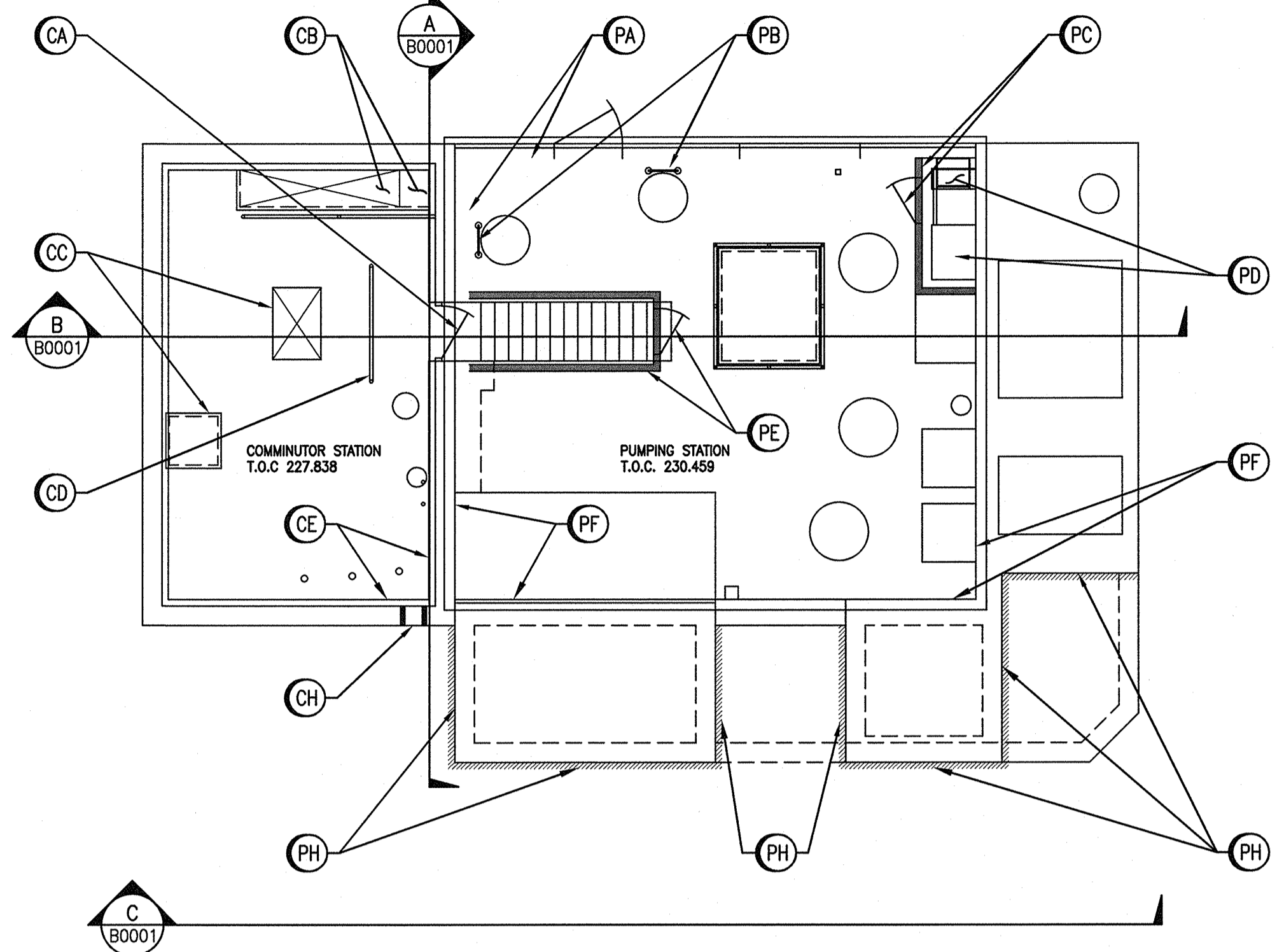


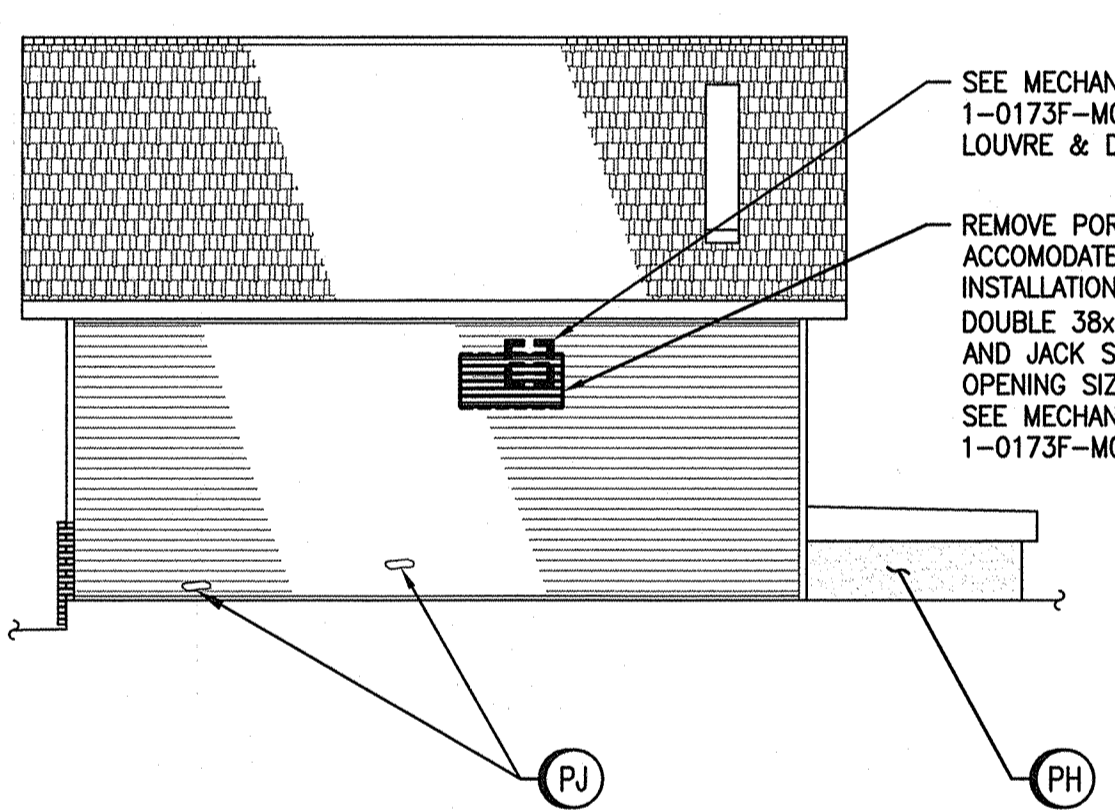
COMMINUTOR CHAMBER ROOF PLAN @ T.O.C. 230.459
SCALE: 1 : 75



PARTIAL FLOOR PLAN
SCALE: 1 : 75

- REMOVAL NOTES – COMMINUTOR(C) STATION:**
- (CA) REMOVE DOOR/JAMB ASSEMBLY
 - (CB) REMOVE PLYWOOD STAIRS COVERS
 - (CC) REMOVE PLYWOOD AT FLOOR OPENINGS
 - (CD) REMOVE GUARDRAIL AT OPERATOR CONTROL VALVE MECHANISM
 - (CE) REMOVE LAYER(S) OF RIGID INSULATION ON ALL WALLS
 - (CF) REMOVE LAYER OF RIGID INSULATION AT U/S CEILING, HATCH COVER & ROOF BEAM LOCATIONS
 - (CG) SAWCUT OPENING THRU 228.6 (9") CONCRETE ROOF
 - (CH) ENLARGE EXISTING HOLE FOR NEW PVC DUCT – SEE MECH. DRAWINGS
 - (CJ) REMOVE EXISTING SWING GATE AND FIXED PORTION

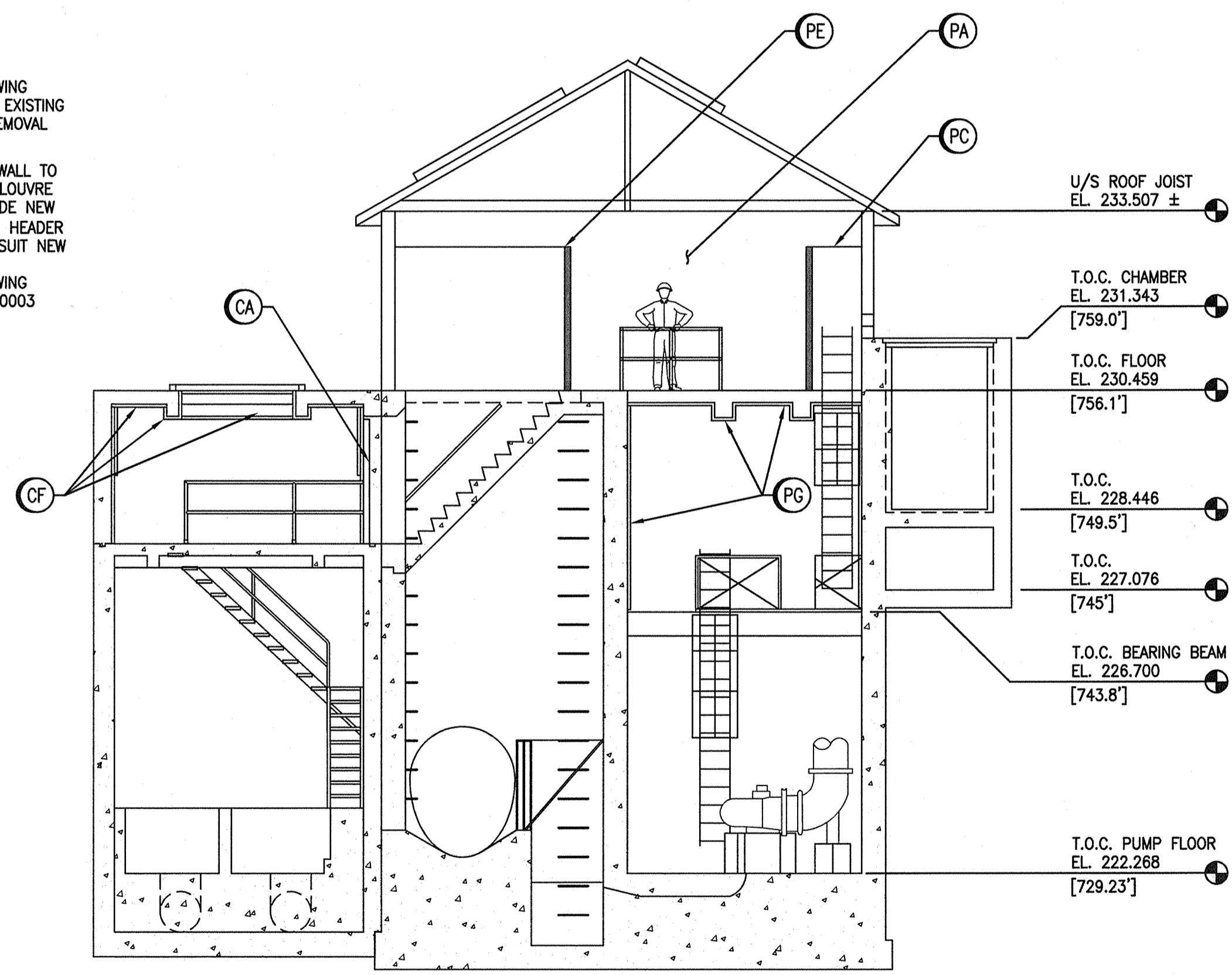
- REMOVAL NOTES – PUMPING(P) STATION:**
- (PA) REMOVE WOODEN FRAMED WALL STRUCTURE (TO BE CONFIRMED)
 - (PB) REMOVE WET WELL LADDER ACCESS GRAB BAR
 - (PC) REMOVE WOODEN FRAMED ENCLOSURE & ACCESS DOOR
 - (PD) REMOVE PLYWOOD FLOORING SECTIONS OVER DRYWELL ACCESS OPENING
 - (PE) REMOVE WOODEN FRAMED ENCLOSURE & ACCESS DOOR
 - (PF) REMOVE PLYWOOD COVER OVER UPPER PORTION OF CONCRETE/BLOCK WALL
 - (PG) REMOVE LAYER OF RIGID INSULATION AT U/S CEILING, ALL WALLS & ROOF BEAM LOCATIONS
 - (PH) REMOVE AND REPLACE STUCCO PARGING ON DISCHARGE BOXES
 - (PJ) REMOVE AND REPLACE DAMAGED SECTION OF WALL SIDING. MATCH EXISTING PROFILE AND COLOUR.



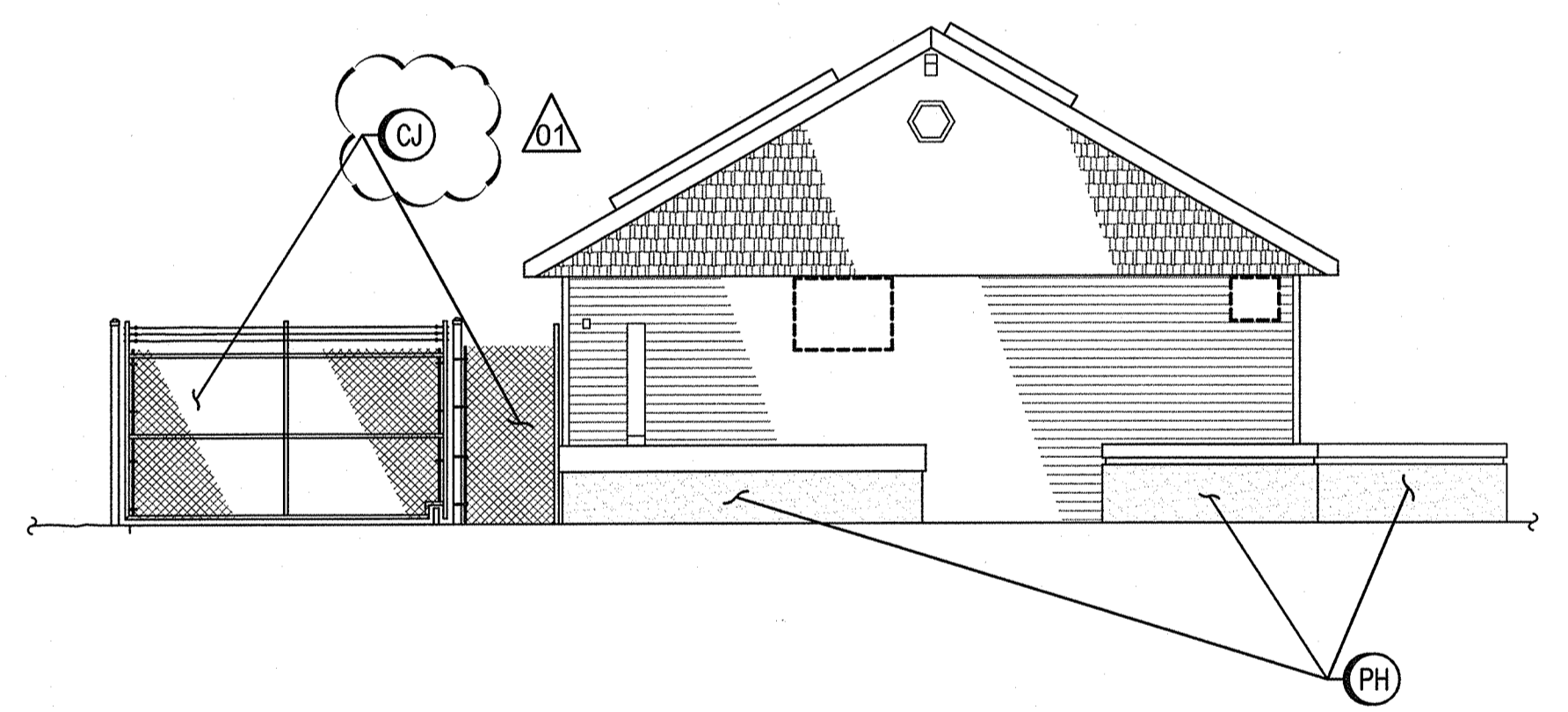
A ELEVATION
SCALE: 1 : 75

SEE MECHANICAL DRAWING 1-0173F-M0001 FOR EXISTING LOUVRE & DAMPER REMOVAL

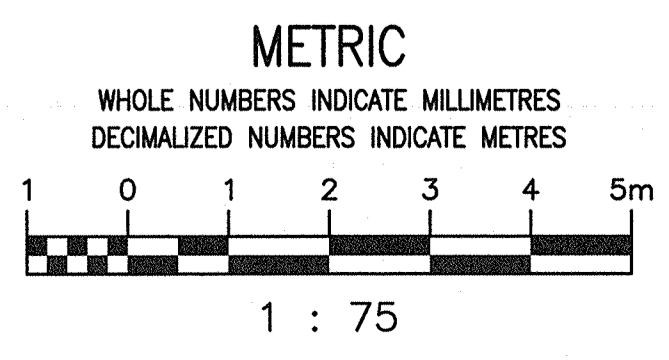
REMOVE PORTION OF WALL TO ACCOMMODATE LARGER LOUVRE INSTALLATION – PROVIDE NEW DOUBLE 38x184 (2x8) HEADER AND JACK STUDS TO SUIT NEW OPENING SIZE. SEE MECHANICAL DRAWING 1-0173F-M0002 & M0003



B ELEVATION
SCALE: 1 : 75

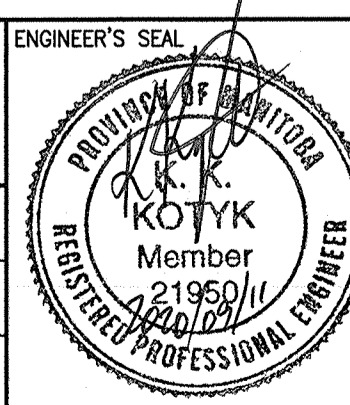


C ELEVATION
SCALE: 1 : 75



NO.	REVISIONS	DATE	DESIGN	CHECK
01	ISSUED FOR CONSTRUCTION	2020/09/11	K.K.	B.C.
00	ISSUED FOR TENDER, BID OP 567-2020	2020/08/19	K.K.	B.C.

		SNC-LAVALIN INC. 148 Nature Park Way Winnipeg, MB, Canada R3P 0X7 204-786-8080	
DESIGNED BY:	K. KOTYK	CHECKED BY:	B. CLEVEN
DRAWN BY:	B. DICKSON	APPROVED BY:	B. CLEVEN
SCALE:	1 : 75	ISSUED FOR CONSTRUCTION BY:	K. ZUREK
DATE:	2020/04/27	DATE:	2020/09/02
CONSULTANT NO.:			



		THE CITY OF WINNIPEG WATER AND WASTE DEPARTMENT	
POLSON FLOOD PUMPING STATION 2020 UPGRADES BUILDING REMOVALS PLAN & ELEVATIONS			
CITY DRAWING NUMBER	SHEET	REV.	SIZE
1-0173F-B0001	001	01	A1