

MANITOBA HYDRO SHALL CUT, CAP & ABANDON ORIGINAL FEED TO THE STREET LIGHTS PROPOSED TO BE REMOVED. ALL FINAL CONNECTIONS WILL BE COMPLETED BY MANITOBA HYDRO.

INSTALL ALL 4AL CN CABLE IN 2" CONDUIT

INSTALL PROPOSED STREET LIGHTS ON THE NEW TRENCH ALIGNMENT AS SHOWN

INSTALL NEW GROUND RODS AS PER CD50-5

#6 DUPLEX HAS BEEN SUPPLIED FOR TEMPORARY LIGHT CONNECTIONS, IF NECESSARY.

"STREET LIGHT PLACEMENT FOLLOWS IES STANDARDS AND THEY ARE PLACED ACCORDINGLY USING DRIVEWAY LOCATIONS PROVIDED BY THE DEVELOPER. DRIVEWAY LOCATIONS THAT HAVE BEEN CHANGED AFTER THE DESIGN HAS BEEN SEALED RESULTING IN A CONFLICT BETWEEN STREETLIGHTS AND THE DRIVEWAY ARE THE RESPONSIBILITY OF THE DEVELOPER TO RECOVER THE COSTS ASSOCIATED WITH RELOCATING THE STREETLIGHTS."

BANNERS AND ASSOCIATED HARDWARE TO BE REMOVED AND RETURNED TO THE CITY OF WINNIPEG, 1277 PACIFIC AVE WITH AN ITEMIZED LIST AND QUANTITIES.

MAGENTA	PROPOSED TRENCH
RED	PROPOSED OBJECT
PINK	OBJECT TO BE ABANDONED
GREEN	OBJECT TO BE SALVAGED
BLACK	EXISTING OBJECT
LA ANNOTATION	1 - 4AL CN STREET LIGHTING CABLE
LL ANNOTATION	1 - LED TRIPLEX STREET LIGHTING CABLE

EXISTING STREET LIGHTS WILL BE RELOCATED AND PLACED ON THE NEW FOUNDATION.

INSTALL TWO LIGHTING DIPS ON EXISTING POLE. BUILT TO CD 315-5

REPLACE LIGHT FIXTURE TO PROVIDE REQUIRED LIGHTING LEVEL

THREE MANHOLES AND THE DUCT LINE HAVE TO BE LEVELLED OR REMOVED. THIS IS NOT INCLUDED UNDER THIS ESTIMATE.

NOTES :

CONSTRUCTION STANDARDS

TO BE CONSTRUCTED IN ACCORDANCE WITH MANITOBA HYDRO DISTRIBUTION AND SUBTRANSMISSION STANDARDS. LATEST REVISION. NO MAJOR CHANGE SHALL BE MADE WITHOUT APPROVAL OF THE DESIGN ENGINEER OR DELEGATE.

CUSTOMER ACCEPTANCE

THE CUSTOMER SERVICE DEPARTMENT REPRESENTATIVE IS RESPONSIBLE FOR OBTAINING WRITTEN CUSTOMER AGREEMENT TO THE PROPOSED INSTALLATION PRIOR TO CONSTRUCTION COMMENCEMENT.

SITE GRADING

THE DEVELOPER IS RESPONSIBLE FOR GRADING OF THE SITE TO WITHIN +/-0.15M OF FINISHED GRADE PRIOR TO CONSTRUCTION COMMENCEMENT. BENCHMARKS ARE TO BE OBTAINED FROM THE DEVELOPER OR CONSULTANT.

UNDERGROUND CABLES SHALL NOT BE INSTALLED IN THE SAME VERTICAL PLANE WITH OTHER UNDERGROUND SYSTEMS:

SUCH AS PRIVATELY OWNED SUPPLY CABLES, GAS, WATER, SEWER LINES OR ANY FOREIGN CONDUIT. INSTALLATION WITH COMMUNICATION CABLE IN THE SAME VERTICAL PLANE IS PERMITTED WITH JOINT USE INSTALLATION.

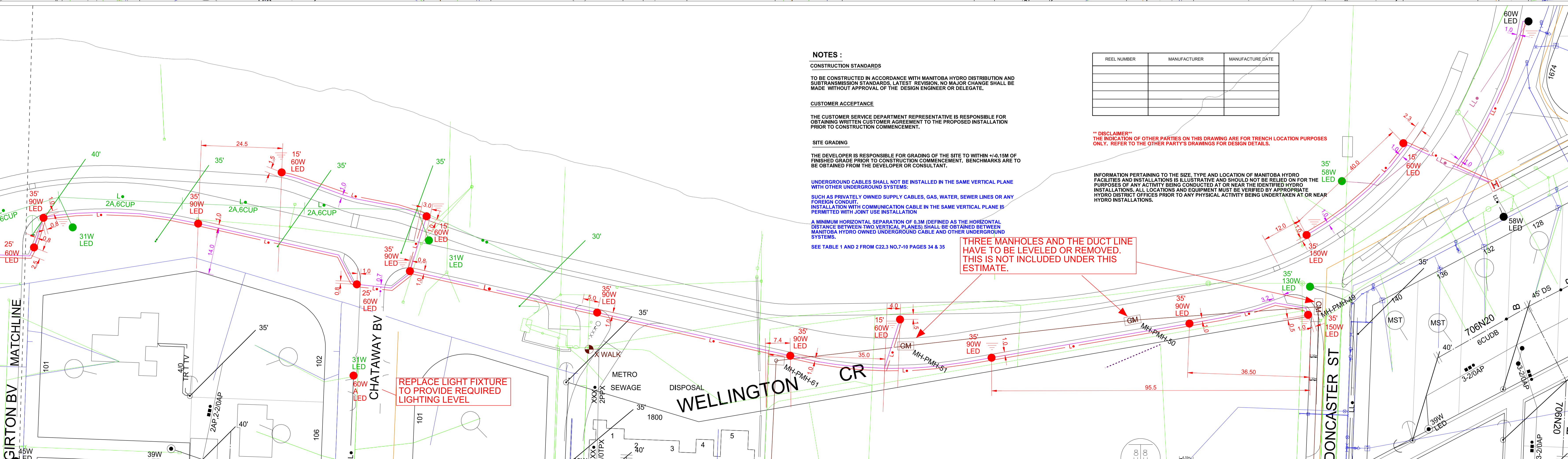
A MINIMUM HORIZONTAL SEPARATION OF 0.3M (DEFINED AS THE HORIZONTAL DISTANCE BETWEEN TWO VERTICAL PLANES) SHALL BE OBTAINED BETWEEN MANITOBA HYDRO OWNED UNDERGROUND CABLE AND OTHER UNDERGROUND SYSTEMS.

SEE TABLE 1 AND 2 FROM C22.3 NO.7-10 PAGES 34 & 35

REEL NUMBER	MANUFACTURER	MANUFACTURE DATE

**** DISCLAIMER ****
THE INDICATION OF OTHER PARTIES ON THIS DRAWING ARE FOR TRENCH LOCATION PURPOSES ONLY. REFER TO THE OTHER PARTY'S DRAWINGS FOR DESIGN DETAILS.

INFORMATION PERTAINING TO THE SIZE, TYPE AND LOCATION OF MANITOBA HYDRO FACILITIES AND INSTALLATIONS IS ILLUSTRATIVE AND SHOULD NOT BE RELIED ON FOR THE PURPOSES OF ANY ACTIVITY BEING CONDUCTED AT OR NEAR THE IDENTIFIED HYDRO INSTALLATIONS. ALL LOCATIONS AND EQUIPMENT MUST BE VERIFIED BY APPROPRIATE HYDRO DISTRICT OFFICES PRIOR TO ANY PHYSICAL ACTIVITY BEING UNDERTAKEN AT OR NEAR HYDRO INSTALLATIONS.



CONTACT	NAME	PHONE NUMBER	E-MAIL ADDRESS
DESIGN	IRENA GOMON	204-797-7690	igomon@hydro.mb.ca
DESIGN ENGINEER	MICHAEL SEFTON	204-792-5794	msefton@hydro.mb.ca
DESIGN & PROJECTS SECTION	DARIN WACH	204-360-2083	dwach@hydro.mb.ca
ENERGY SERVICE ADVISOR	TIM LOEB	204-791-2822	tloeb@hydro.mb.ca
LAG CONSTRUCTION	BRENT KRDEKER	204-793-1670	bkrdeker@hydro.mb.ca
OH CONSTRUCTION	WAYNE IRELAND	204-771-5212	wireland@hydro.mb.ca
SL MAINTENANCE	DARREN TABAK	204-360-7521	dtabak@hydro.mb.ca
CUSTOMER REP	RYAN MUNRO	204-686-5515	r.munro@winnipeg.ca
DISTRICT ENG TECH	TODD FOUNTAIN	204-360-7467	tfountain@hydro.mb.ca
CONSULTANT	RICHARD HAWKINS	204-259-1566	Richard.Hawkins@WSP.com

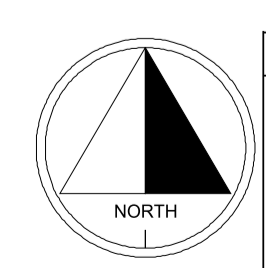
AUTHORITY	NOTIFIED	NOT REQ'D	OBTAINED
DISTRICT	2020 04 12		2020 04 20
C.O.W. MUNICIPAL	2020 06 03		2020-06-19
M.T.S.		X	
GAS		X	
SHAW		X	
EASEMENTS		X	
COMMUNICATIONS		X	
S.C.C.		X	
DEPT. OF HIGHWAYS		X	

REMOVED			
Quantity	Fixture Type	Wattage	Pole Type
2	LED	70W	EXCLUSIVE
5	LED	31W	EXCLUSIVE
1	LED	130W	EXCLUSIVE

INSTALLED			
Quantity	Fixture Type	Wattage	Pole Type
15	LED	90W	EXCLUSIVE
2	LED	150W	EXCLUSIVE
9	LED	60W	EXCLUSIVE

PRELIMINARY
NOT TO BE USED FOR CONSTRUCTION

CONTACT "CLICK BEFORE YOU DIG MANITOBA" AT ClickBeforeYouDigMB.com
THREE FULL WORKING DAYS
PRIOR TO CONSTRUCTION FOR LOCATION OF EXISTING WATER, WASTEWATER, LAND DRAINAGE UTILITIES AND MANITOBA HYDRO UTILITIES



DATE	REVISIONS	BY	CHKD.	APP.

DRAWING NUMBER	REFERENCE DRAWINGS	DRAWN	ING
	COW UG STRUCTURE APPROVAL		

AREA NUMBER	MANITOBA HYDRO DISTRIBUTION ENGINEERING
4901	NETWORK # 4306566

STATION NUMBER	CSC: CITY CENTRE FORT GARRY
	CUSTOMER SERVICE COW - WELLINGTON CRES (PARK - DONCASTER)

FEEDEER NUMBER	RELOCATE STREET LIGHTS, SL CABLES AND ALL ASSOCIATED EQUIPMENT

SYSTEM VOLTAGE	120V

SCALE	1:500

DATE	2020 10 20

DATE	2020 10 20

1-04707-DE-50000-0526	SHT. REV. 1/1 00