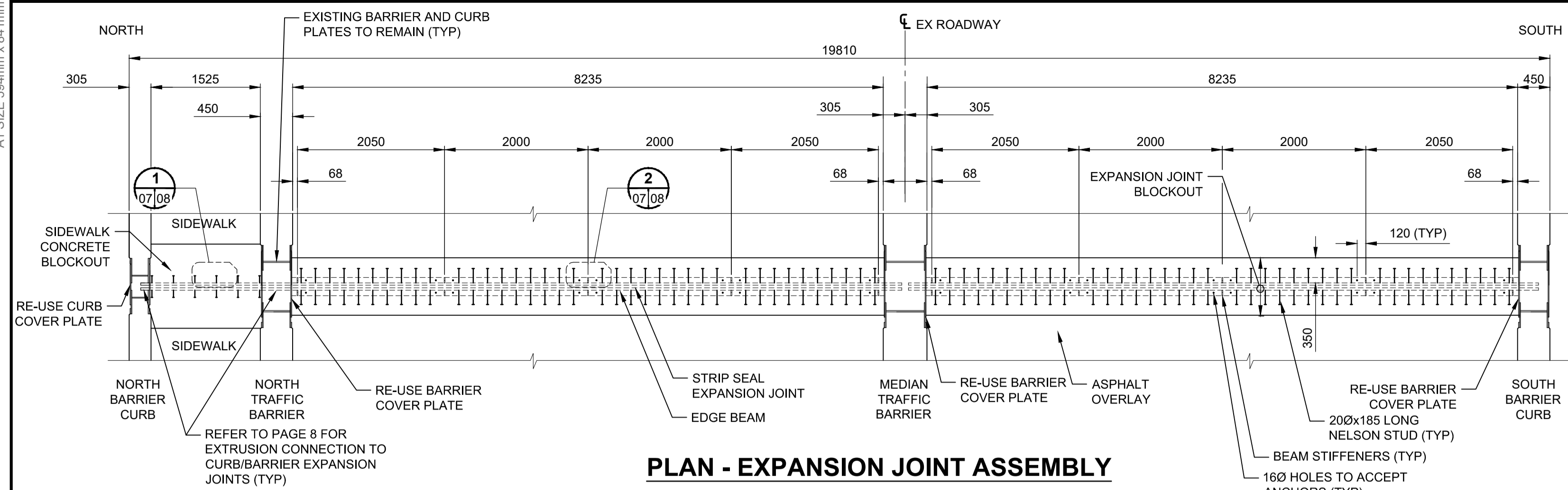
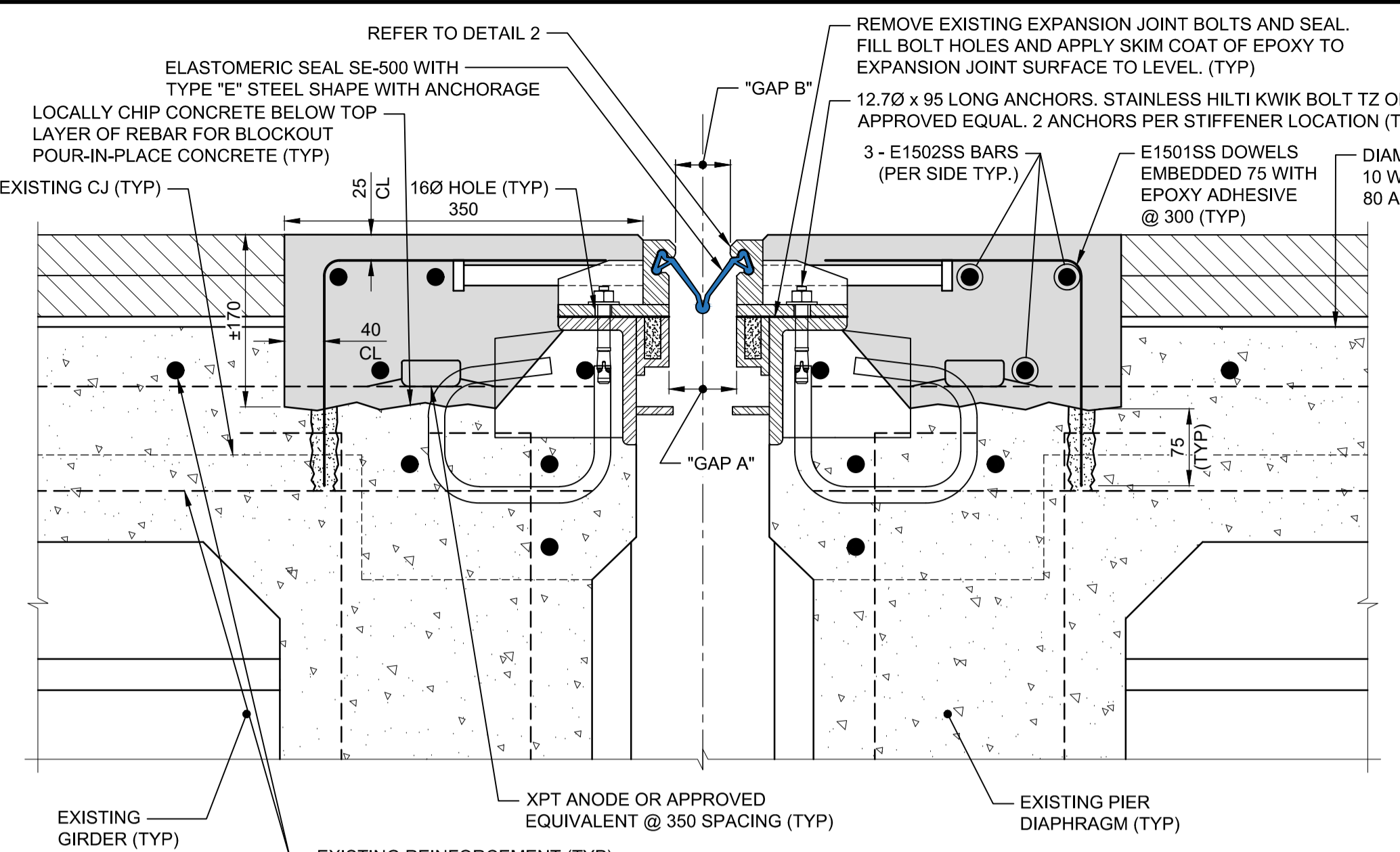


FILE NAME: 2021423-Nairn-DT-03.dwg Saved By: aheppner PLOT: 2/9/2021 3:02:33 PM A1 SIZE 594mm x 841mm

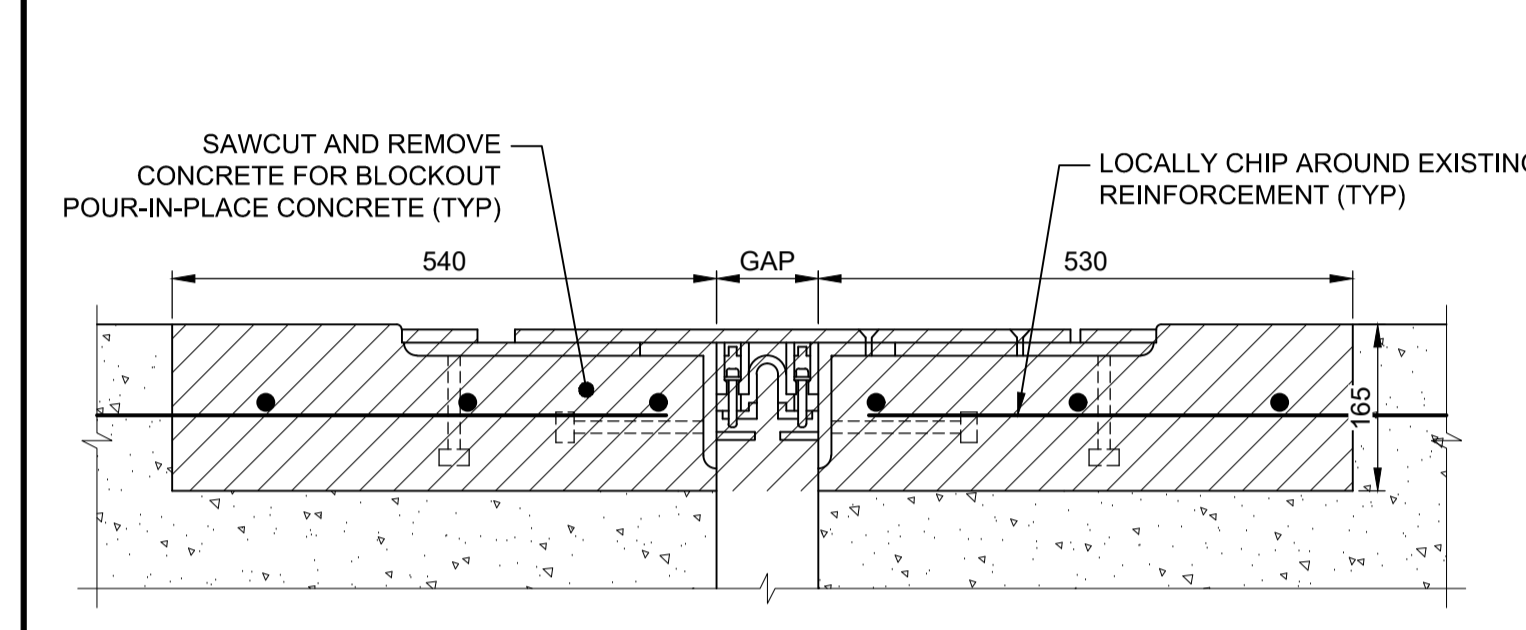


PLAN - EXPANSION JOINT ASSEMBLY
SCALE: 1:50

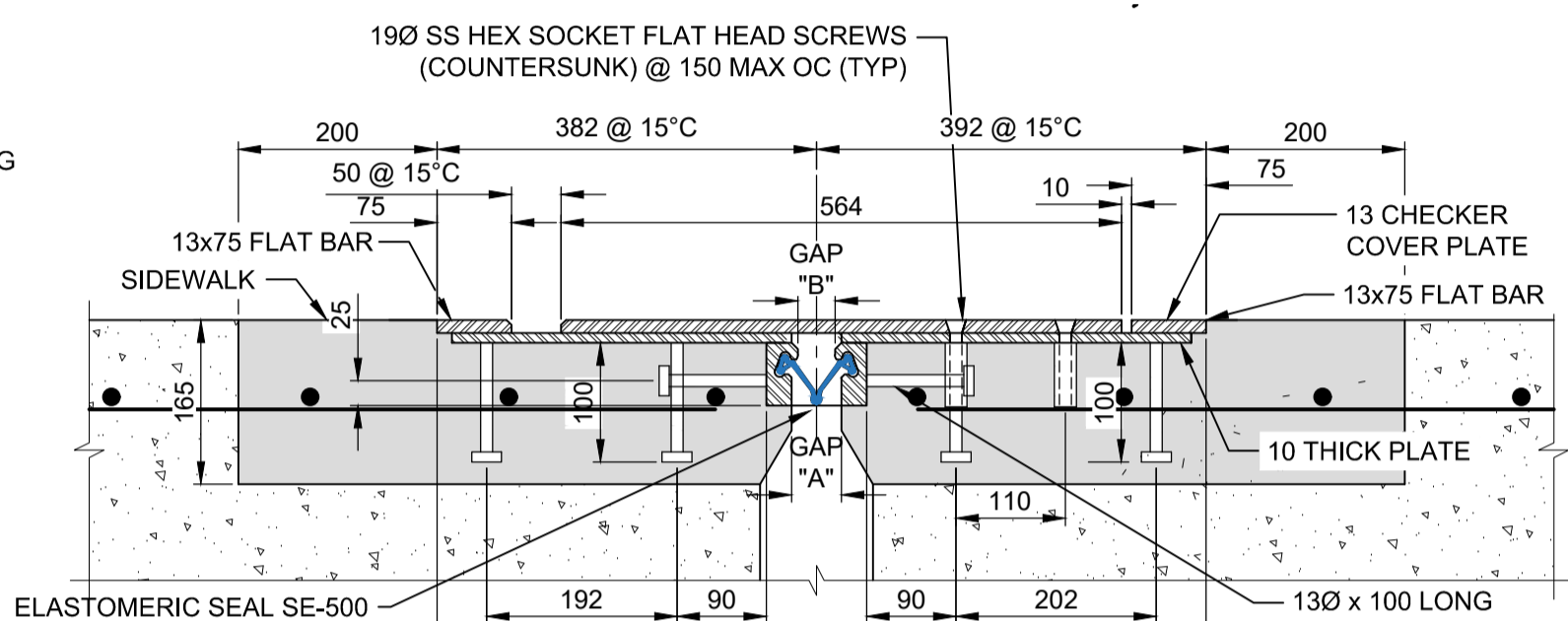


SECTION - PIER EXPANSION JOINT
SCALE: 1:5

TEMPERATURE WIDTH ADJUSTMENT TABLE					
TEMP	-40°	-20°	0°	20°	40°
GAP "A"	94	78	62	46	30
GAP "B"	81	65	49	33	17

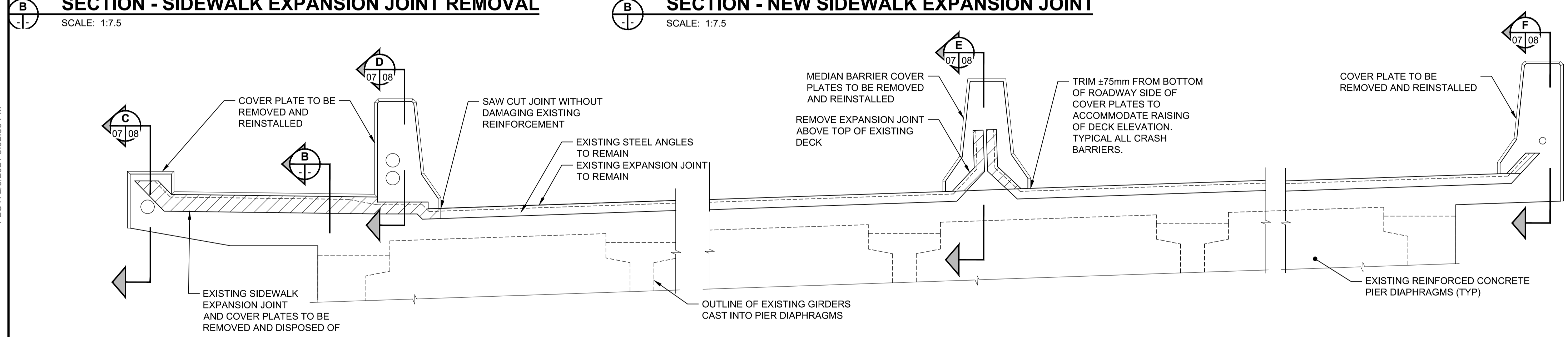


SECTION - SIDEWALK EXPANSION JOINT REMOVAL
SCALE: 1:7.5

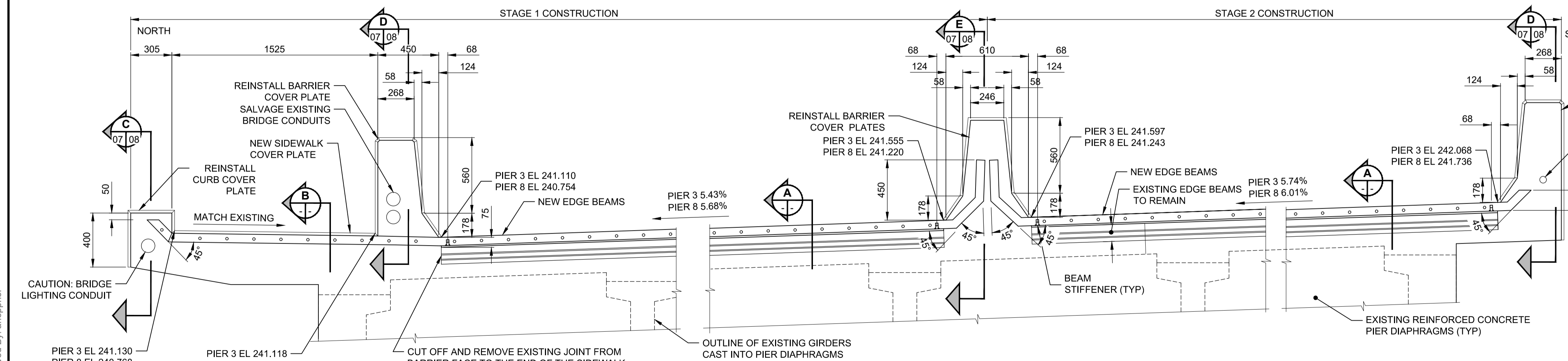


SECTION - NEW SIDEWALK EXPANSION JOINT
SCALE: 1:7.5

- EXPANSION JOINT GENERAL NOTES:**
- EXPANSION JOINTS ARE DESIGNED TO ACCOMMODATE THE ANTICIPATED THERMAL EXPANSION / CONTRACTION REQUIREMENTS BASED ON AN 80°C TEMPERATURE RANGE.
 - EXPANSION JOINTS ARE PRESET TO ALLOW FOR A MINIMUM SEAL INSTALLATION WIDTH OF 33mm AT 20°C.
 - THE EXPANSION JOINT ASSEMBLIES SHALL BE DESIGNED TO CARRY THE LATEST EDITION OF CHBD C56-19 CL-625 TRUCK LOADS.
 - STEEL SHALL BE IN ACCORDANCE WITH THE LATEST CSA STANDARD CAN/CSA G40.21M GRADE 300W OR GRADE A588 OR EQUAL AND ALL SUBSEQUENT REVISIONS.
 - STEEL EXTRUSIONS SHALL BE IN ACCORDANCE WITH THE LATEST CSA STANDARD CAN/CSA G40.21M GRADE 230G OR GRADE A588 MINIMUM AND ALL SUBSEQUENT REVISIONS.
 - ALL STEEL COMPONENTS SURFACES, INCLUDING COVER PLATES AND TRENCH SHALL BE HOT DIP GALVANIZED IN ACCORDANCE WITH THE LATEST CSA STANDARD CAN/CSA G164-M92 AND ALL SUBSEQUENT REVISIONS TO A MINIMUM NET RETENTION OF 610 gm/m² AFTER FABRICATION.
 - JOINT ASSEMBLY SHALL BE FABRICATED AND COMPLETELY SHOP ASSEMBLED AND PRESET TO DIMENSIONS "A" FOR 20°C PRIOR TO SHIPMENT.
 - THE CONTRACTOR SHALL FIELD VERIFY ALL ELEVATIONS AND DIMENSIONS RELATED TO THE EXPANSION JOINTS EXTRUSIONS AND EXPANSION JOINT BLOCKOUT PRIOR TO FABRICATION.
 - EXPANSION JOINT UNITS AND RELATED MATERIALS SHALL BE INSTALLED IN ACCORDANCE WITH MANUFACTURER'S RECOMMENDATIONS.
 - THE CONTRACTOR IS REQUIRED TO PROVIDE SUPPORT FOR THE EXPANSION JOINT ASSEMBLIES DURING PLACEMENT OF CONCRETE. ALL SUPPORT SYSTEMS SHALL NOT INTERFERE WITH ANY CONCRETE FINISHING OPERATIONS.
 - BLEEDER HOLES SHALL BE DRILLED INTO THE TOP OF THE STEEL EDGE BEAMS OF THE EXPANSION JOINT AND INTO THE TOP OF THE CURB COVER PLATES WHERE CONCRETE CAST DIRECTLY AGAINST. FOLLOWING CONCRETING OPERATIONS THE ENGINEER SHALL INSPECT THESE AREAS BY METHOD OF SOUNDING. ALL VOIDS SHALL BE FILLED WITH AN APPROVED NON-SHRINK GROUT.
 - SEAL SHALL BE PREFORMED NEOPRENE RUBBER AS SPECIFIED. EACH SEAL SHALL BE SUPPLIED & INSTALLED IN ONE CONTINUOUS PIECE. NO SPLICE IN THE RUBBER SEAL WILL BE PERMITTED.
 - UNLESS NOTED, CURB DIMENSIONS SHOWN ARE TO CONCRETE FACES. EXPANSION JOINT FABRICATOR SHALL MAKE APPROPRIATE ADJUSTMENTS FOR CHAMFERS AND OFFSETS AS SHOWN ON DETAILS.
 - INSTALLATION TEMPERATURE SHALL BE TAKEN AS THE MEAN SHADE AIR TEMPERATURE 48 HOURS PRIOR TO JOINT INSTALLATION.
 - IMMEDIATELY PRIOR TO PLACEMENT OF CONCRETE, ALL METAL SURFACES WHICH WILL BE IN CONTACT WITH CONCRETE SHALL BE COATED WITH EPOXY ADHESIVE. RATE OF PLACEMENT OF ADHESIVE SHALL BE SUCH THAT THE ADHESIVE DOES NOT DRY OR SET BEFORE CONCRETE IS PLACED AGAINST IT.
 - LOOSEN ERECTION BOLTS WITHIN 24 HOURS OF CONCRETING TO ALLOW JOINT MOVEMENT DUE TO TEMPERATURE CHANGE.
 - AFTER REMOVAL OF CLAMPING CHANNELS AND SPACER DAM, BOLT AND BLEEDER HOLES TO BE FILLED WITH AN APPROVED EPOXY GROUT.
 - SEAL WELDING OF THE TOP EDGE COVER PLATE MEMBERS TO THE EXPANSION JOINT END PLATES AND ASSOCIATED FIELD GALVANIZING SHALL TAKE PLACE PRIOR TO INSTALLATION OF EXPANSION JOINT SEALS.
 - ALL SURFACES IN CONTACT WITH JOINT SEALS SHALL BE CLEANED PRIOR TO INSTALLATION OF SEALS.
 - AVOID ANY CONTACT BETWEEN REINFORCING STEEL AND GALVANIZED ANCHORS.



ELEVATION - EXPANSION JOINT ASSEMBLY REMOVALS



ELEVATION - NEW EXPANSION JOINT ASSEMBLY

- NOTES:**
- LAYOUT DIMENSIONS ARE TO FACE OF CONCRETE
 - PLATES TO BE RECESSED AS PER DETAILS
 - TOP OF NEW EXPANSION JOINT ELEVATIONS GIVEN ARE BASED ON NEW ROADWAY PROFILE. ROADWAY EXPANSION JOINTS ARE TO BE INSTALLED ON TOP OF EXISTING. EXISTING SIDEWALK EXPANSION JOINTS ARE TO BE REMOVED AND REPLACED WITH NEW SIDEWALK EXPANSION JOINTS. SIDEWALK EXPANSION JOINTS ELEVATIONS TO MATCH EXISTING. CONTRACTOR TO FIELD VERIFY EXISTING SITE ELEVATIONS AND PROVIDE ELEVATIONS ALONG PIERS TO CONTRACT ADMINISTRATOR PRIOR TO EXPANSION JOINT FABRICATION.



METRIC
WHOLE NUMBERS INDICATE MILLIMETRES
DECIMALIZED NUMBERS INDICATE METRES

LOCATION APPROVED
UNDERGROUND STRUCTURES

SUPR. U/G STRUCTURES COMMITTEE DATE

NOTE:
LOCATION OF UNDERGROUND STRUCTURES AS SHOWN ARE BASED ON THE BEST INFORMATION AVAILABLE BUT NO GUARANTEE IS GIVEN THAT ALL EXISTING UTILITIES ARE SHOWN OR THAT THE GIVEN LOCATIONS ARE EXACT. CONFIRMATION OF EXISTENCE AND EXACT LOCATION OF ALL UTILITIES MUST BE OBTAINED FROM THE INDIVIDUAL UTILITIES BEFORE PROCEEDING WITH CONSTRUCTION.

BM 28-022 ELEV 231.341 m	N.W. Cor. Nairn Ave. & Grey St., in Valve Box, Bolt in 4.6 m Conc. pile, 2.4 m E. of W.L. of Grey St. & 0.6 m N. of N.L. of Nairn Ave. produced from the E.
C	ISSUED FOR TENDER 21/02/09 BE
B	ISSUED FOR REVIEW 21/02/04 BE
A	ISSUED FOR REVIEW 21/01/18 BE
No. REVISIONS	Y/M/M/DD BY DATE

MORRISON HERSHFIELD	
DESIGNED BY AGG	CHECKED BY BE
DRAWN BY AH	APPROVED BY BE
RELEASED FOR CONSTRUCTION	
HOR SCALE AS SHOWN	VERT SCALE AS SHOWN
DATE 21/01/15	

PROFESSIONAL'S SEAL

PRELIMINARY DRAWING

NOT TO BE USED FOR CONSTRUCTION

CONSULTANT FILE NAME
2021423-NAIRN-DT-03.DWG

THE CITY OF WINNIPEG
PUBLIC WORKS DEPARTMENT
ENGINEERING DIVISION

NAIRN AVENUE OVERPASS DECK REHABILITATION

PIER EXPANSION JOINT DETAILS 1 OF 3

CITY DRAWING NUMBER B121-21-07
SHEET 07 OF 12
DRAWING NUMBER 07

TENDER No. 810-2020