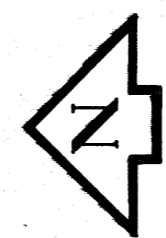
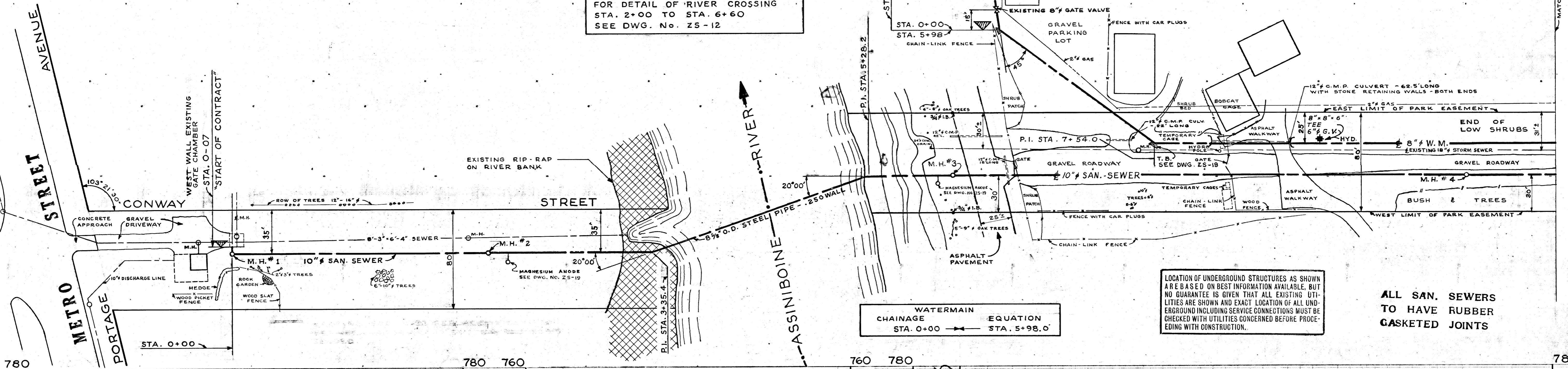


CITY OF ST. JAMES

ASSINIBOINE PARK  
CITY OF WINNIPEG



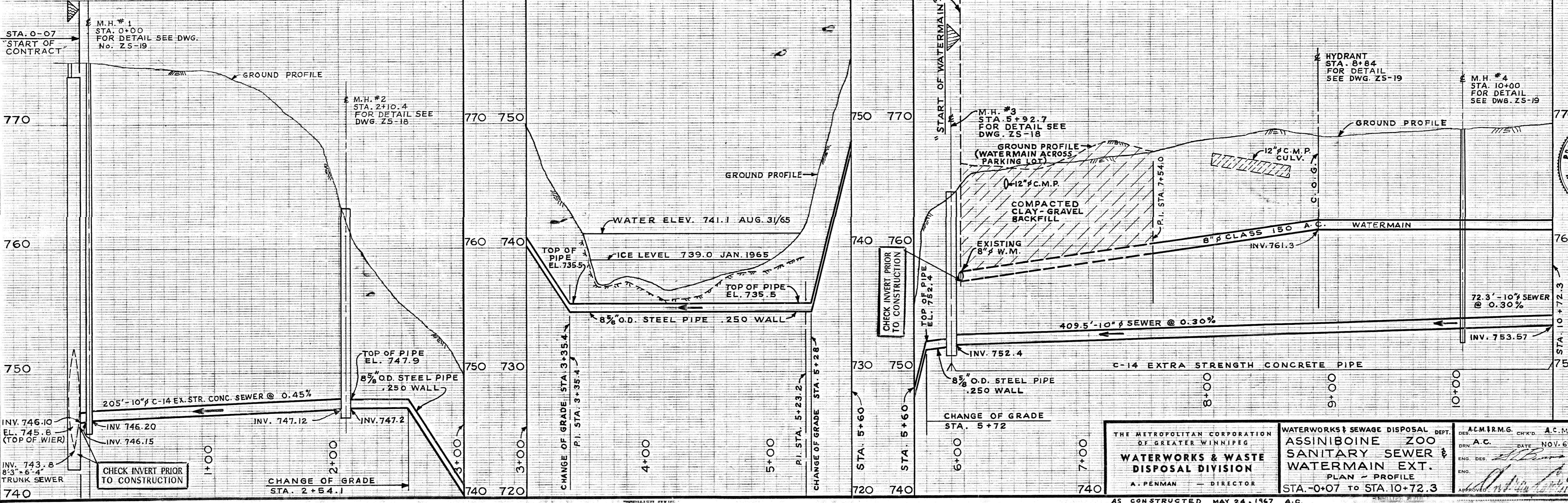
FOR DETAIL OF RIVER CROSSING  
STA. 2+00 TO STA. 6+60  
SEE DWG. No. Z5-12



LOCATION OF UNDERGROUND STRUCTURES AS SHOWN  
ARE BASED ON BEST INFORMATION AVAILABLE, BUT  
NO GUARANTEE IS GIVEN THAT ALL EXISTING UTI-  
LITIES ARE SHOWN AND EXACT LOCATION OF ALL UN-  
DERGROUND INCLUDING SERVICE CONNECTIONS MUST BE  
CHECKED WITH UTILITIES CONCERNED BEFORE PROCE-  
EDING WITH CONSTRUCTION.

ALL SAN. SEWERS  
TO HAVE RUBBER  
GASKETED JOINTS

WATERMAIN EQUATION  
CHAINAGE STA. 0+00 EQUATION STA. 5+98.0



THE METROPOLITAN CORPORATION OF GREATER WINNIPEG <b>WATERWORKS &amp; WASTE          DISPOSAL DIVISION</b> A. PENMAN - DIRECTOR	WATERWORKS & SEWAGE DISPOSAL DEPT. <b>ASSINIBOINE ZOO          SANITARY SEWER &amp;          WATERMAIN EXT.</b> PLAN - PROFILE STA. 0+07 TO STA. 10+72.3	A.C.M.F.R.M.G. CH'KD. A.C.M. DES. A.C. DATE NOV. 65 ENG. DES. <i>[Signature]</i> APPROVED <i>[Signature]</i>	SCALES HORIZ. 1" = 40' VERT. 1" = 4' DRAWING NO. <b>Z5-13</b>
	AS CONSTRUCTED MAY 24, 1967 A.C.		
	ANDREW CURRIE Director of Parks & Protection		