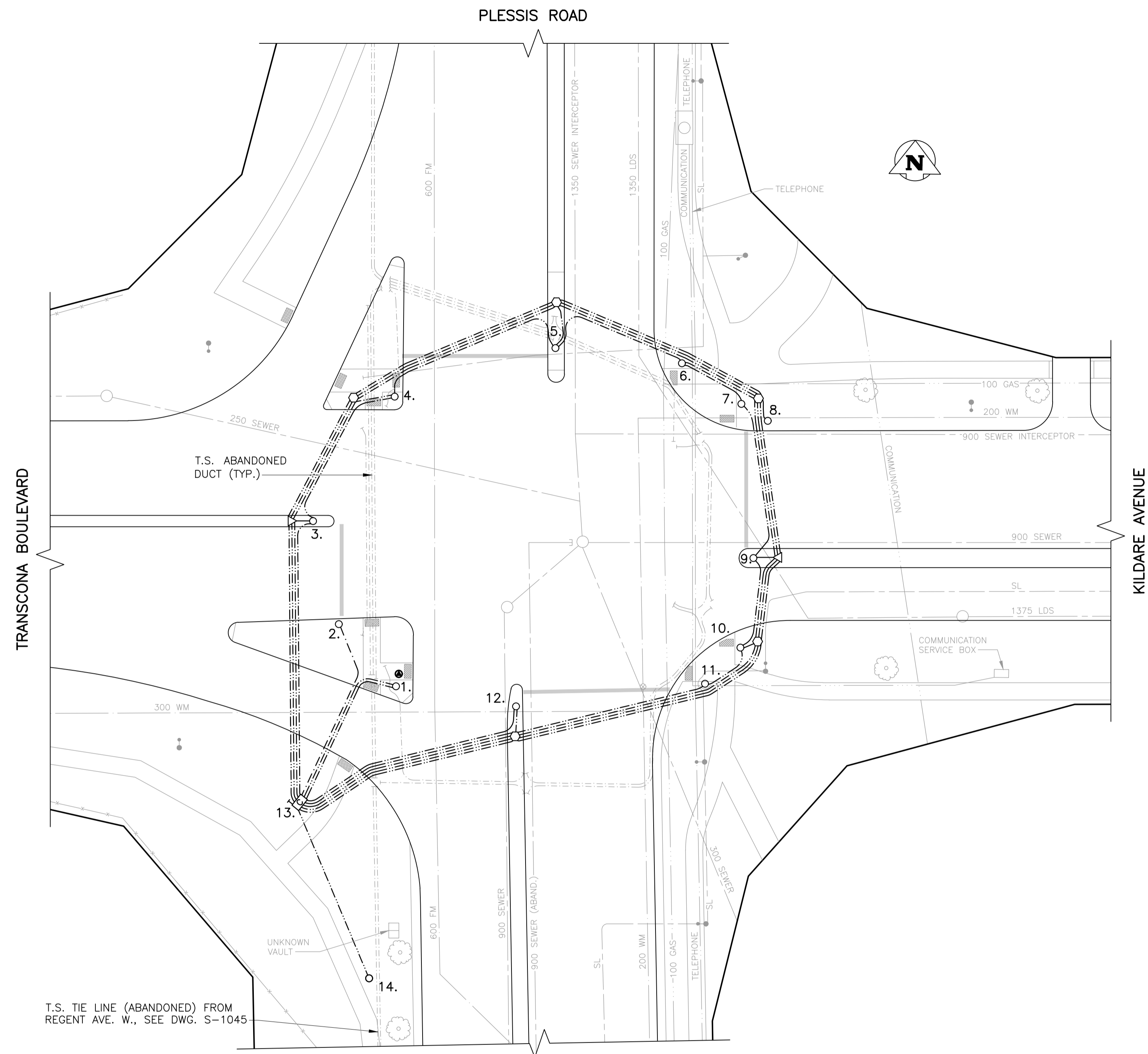
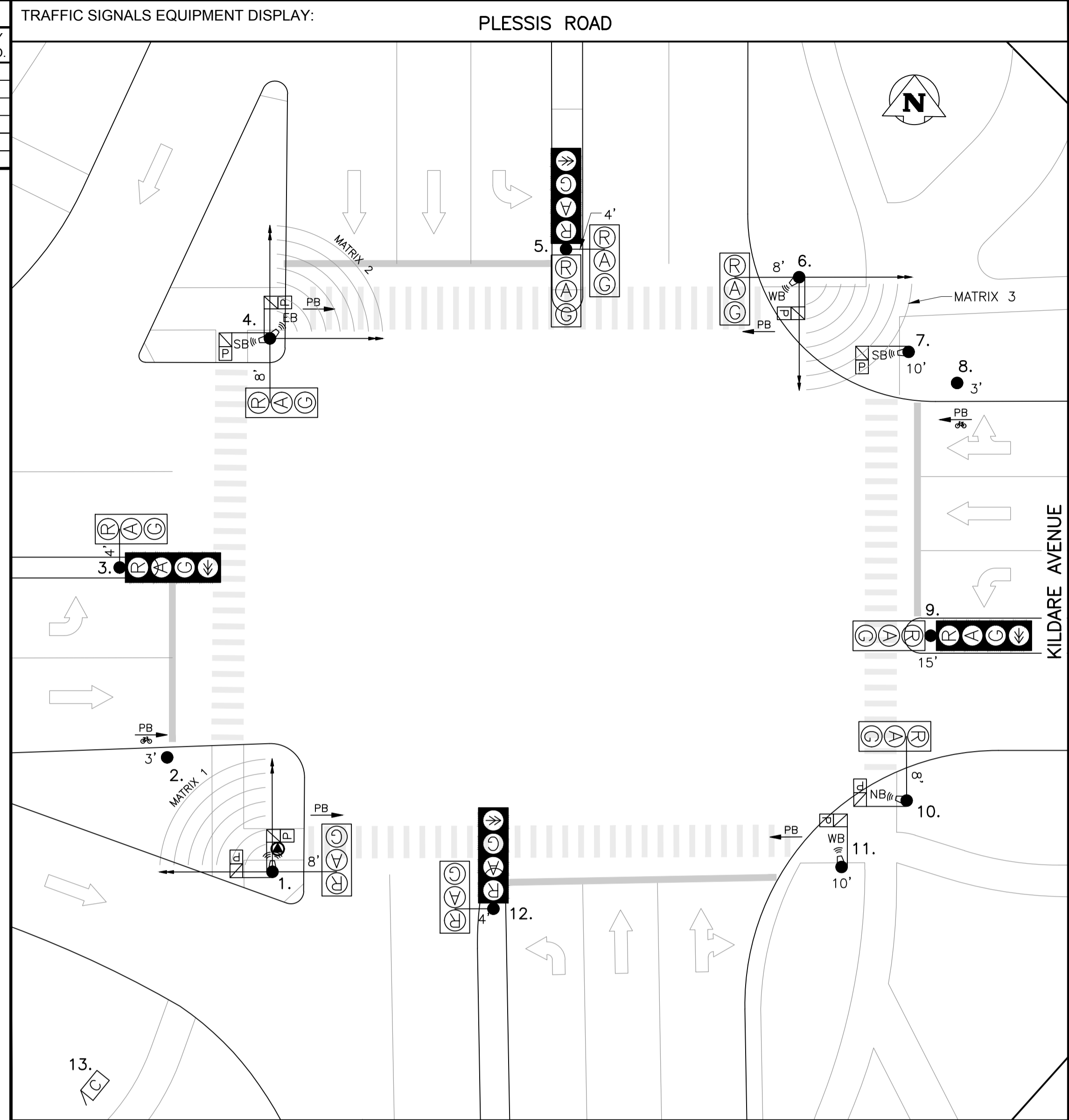


DETECTION CONNECTION DETAILS				
SENSOR NO.	POLE NO.	DETECTION LOCATION	DETECTOR LOCATION	TRANSPARITY DETECTOR NO.
MATRIX 1	1	EB LANES	I6 UPPER	3
MATRIX 2	4	SB LEFT LANE	I1 UPPER	14
MATRIX 3	6	WB LANES	J6 UPPER	4
MATRIX 3	6	WB LEFT LANE	I5 UPPER	16
EB BIKE PB	2	EB BIKE	I7 UPPER	23
WB BIKE PB	8	WB BIKE	J7 UPPER	24



PLAN VIEW: UNDERGROUND CONSTRUCTION  
1:250

EQUIPMENT DISPLAY LEGEND				EQUIPMENT LIST				EQUIPMENT LIST						
NO.	DESCRIPTION	ARM	BASE	B.B.	NO.	DESCRIPTION	ARM	BASE	B.B.	NO.	DESCRIPTION	ARM	BASE	B.B.
1.	CANTILEVER	8'	OD	DC	10.	CANTILEVER	8'	OD	DC					
2.	3' POST		L	L	11.	10' SIGNAL		G	G					
3.	CANTILEVER	4'	G	GC	12.	CANTILEVER	4'	OD	DC					
4.	CANTILEVER W/ VERTICAL EXTENSION FOR WAVETRONIX	8'	OD	DC	13.	332 CABINET/170 CONTROLLER								
5.	CANTILEVER	4'	OD	DC	14.	HYDRO WOOD SERVICE:								
6.	CANTILEVER W/ VERTICAL EXTENSION FOR WAVETRONIX	8'	OD	DC										
7.	10' SIGNAL		G	G										
8.	3' POST		L	L										
9.	15' SIGNAL		G	G										

TRAFFIC SIGNALS UNDERGROUND LEGEND				SIGNAL BASE BOLT SQUARE TYPES					
NO.	DESCRIPTION	ARM	BASE	B.B.	NO.	DESCRIPTION	ARM	BASE	B.B.
1.	POLE BASE				1.	TYPE "A" - 8 1/8"			
2.	CONTROLLER BASE				2.	TYPE "B" - 6 3/4"			
3.	PEDESTAL BASE				3.	TYPE "C" - 8 1/8" SCREW TYPE			
4.	TERMINAL BASE				4.	TYPE "D" - 12 3/4", 1 1/4" DIA. BOLTS, 24" DIA.			
5.	SERVICE BOX (PIT)				5.	TYPE "OD" - 12 3/4", 1 1/4" DIA. BOLTS, 28" DIA.			
6.	24" PRECAST PIT				6.	TYPE "PD" - 12 3/4", PRECAST, 1 1/4" DIA. BOLTS			
7.	30" PRECAST PIT				7.	TYPE "E" - 9 9/16" SCREW TYPE			
8.	36" PRECAST PIT				8.	TYPE "F" - 9 9/16"			
9.	1 1/2" CONDUIT				9.	TYPE "G" - 8 1/8", 1 1/4" DIA. BOLTS, 89mm PROJ.			
10.	2" CONDUIT				10.	TYPE "GS" - 8 1/8", 1 1/4" DIA. BOLTS, 76mm PROJ.			
11.	3" CONDUIT				11.	TYPE "PG" - 8 1/8", PRECAST, 1 1/4" DIA. BOLTS			
12.	AERIAL				12.	TYPE "H" - 9 7/8" SCREW TYPE			
					13.	TYPE "I" - 7 3/4"			
					14.	TYPE "J" - 10 5/8", 1 1/4" DIA. BOLTS			
					15.	TYPE "K" - 10 5/8", PRECAST, 1 1/4" DIA. BOLTS			
					16.	TYPE "L" - 6", 5/8" DIA. BOLTS			
					17.	TYPE "PM" - 8 1/8", PRECAST, 5/8" DIA. BOLTS			

EXISTING	LEGEND	PROPOSED	EXISTING	LEGEND	PROPOSED	EXISTING	LEGEND	PROPOSED
150 WM	WATERMAIN	150 WM	PROPERTY LINE	TELEPHONE	TELEPHONE	TELEPHONE	TELEPHONE	TELEPHONE
HYDRANT	HYDRANT	CONCRETE	CONCRETE	COMMUNICATION	COMMUNICATION	COMMUNICATION	COMMUNICATION	COMMUNICATION
VALVE	VALVE	SIDEWALK	SIDEWALK	WOOD POLE	WOOD POLE	WOOD POLE	WOOD POLE	WOOD POLE
300 SEWER	SEWER	CURB RAMP	CURB RAMP	STREET LIGHT	STREET LIGHT	STREET LIGHT	STREET LIGHT	STREET LIGHT
MANHOLE	MANHOLE	WARNING TILE	WARNING TILE	BANNER POLE	BANNER POLE	BANNER POLE	BANNER POLE	BANNER POLE
CATCH BASIN	CATCH BASIN	ASPHALT	ASPHALT	RAILWAY POLE	RAILWAY POLE	RAILWAY POLE	RAILWAY POLE	RAILWAY POLE
CURB INLET	CURB INLET	SLOPE	SLOPE	GUY-WIRE	GUY-WIRE	GUY-WIRE	GUY-WIRE	GUY-WIRE
HYDRO	HYDRO	CULVERT	CULVERT	FENCE	FENCE	FENCE	FENCE	FENCE
100 GAS	GAS	100 GAS	BUILDING	TREE	TREE	TREE	TREE	TREE

**UNDERGROUND STRUCTURES**  
ORIGINAL SIGNED BY: \_\_\_\_\_  
DATE: \_\_\_\_\_  
UNDERGROUND STRUCTURES COMMITTEE DATE: \_\_\_\_\_

**CONSTRUCTION REVISIONS**

NO.	REVISION	DATE	BY
1	ISSUED FOR RECORD	Jan, 2/19	J.S.
0	ISSUED FOR CONSTRUCTION	Jul, 20/18	R.P.

**NOTE:**  
LOCATIONS OF UNDERGROUND STRUCTURES AS SHOWN ARE BASED ON THE BEST INFORMATION AVAILABLE. BUT NO GUARANTEE IS GIVEN THAT ALL EXISTING UTILITIES ARE SHOWN OR THAT THE GIVEN LOCATIONS ARE EXACT. CONFIRMATION OF EXISTENCE AND EXACT LOCATION OF ALL SERVICES MUST BE OBTAINED FROM THE INDIVIDUAL UTILITIES BEFORE PROCEEDING WITH CONSTRUCTION.

DESIGNED BY	J.S.
DRAWN BY	R.S.
CHECKED BY	
APPROVED BY	

RELEASED FOR CONSTRUCTION: \_\_\_\_\_  
DATE: \_\_\_\_\_

TRAFFIC SIGNALS ENGINEER: \_\_\_\_\_  
DATE: \_\_\_\_\_

LIABILITY DISCLAIMER NOTICE:  
THE DIGITAL INFORMATION PROVIDED FOR YOUR CONVENIENCE HEREIN IS FOR USE AT YOUR OWN RISK. THE CITY OF WINNIPEG, PUBLIC WORKS DEPARTMENT, SHALL ASSUME NO RESPONSIBILITY FOR THE INFORMATION AND IT SHOULD NOT BE CONSTRUED AS ASBULT INFORMATION. THE INFORMATION SHOULD BE USED FOR PLANNING PURPOSES ONLY AND SHOULD BE VERIFIED BY SURVEY. THE DEPARTMENT SHALL NOT IN ANY WAY SUFFER ANY LIABILITY WHATSOEVER TO ANY PARTY FOR INJURY, LOSS OR DAMAGES SUFFERED BY SUCH PARTY ARISING FROM THEIR USE OF, OR RELIANCE UPON, THIS INFORMATION.

RECORD DRAWING

**THE CITY OF WINNIPEG**  
PUBLIC WORKS DEPARTMENT  
TRANSPORTATION DIVISION

**TRAFFIC SIGNALS**  
KILDARE AVE./TRANSCONA BLVD.  
& PLESSIS RD

SCALE: 1:250  
(ALL DIMENSIONS ARE IN METERS UNLESS OTHERWISE NOTED)  
DRAWING NUMBER: S-1005

V:\Traffic Signals\Projects\Kildare, Transcona & Plessis S-1005\_Signage\Drawings\Kildare, Transcona & Plessis S-1005 AB