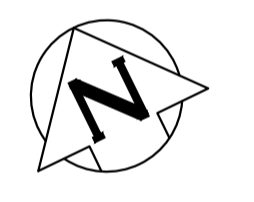
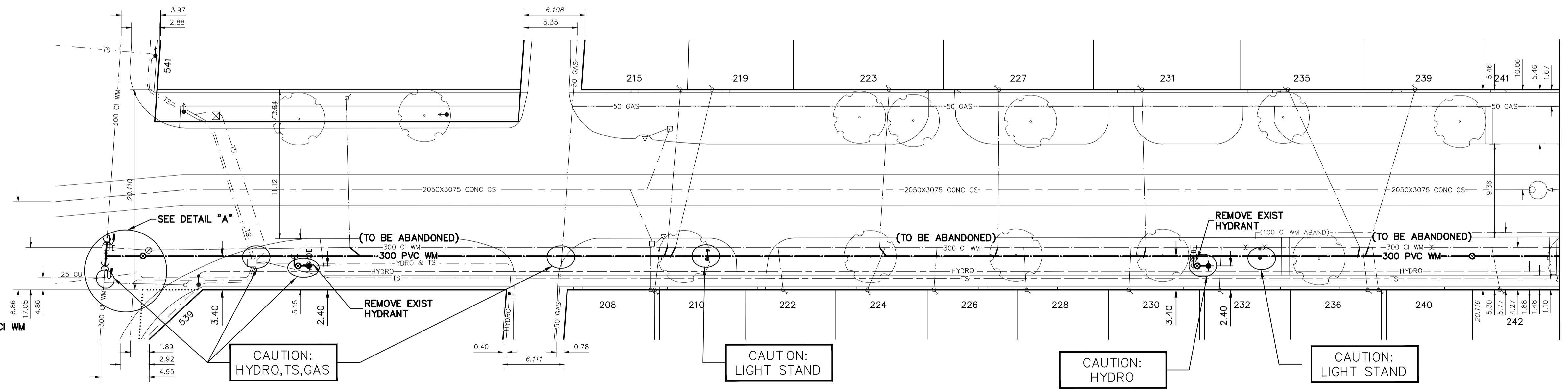


NOTE: CHAINAGES SHOWN ARE ALONG S. R. OF MUNROE AVE

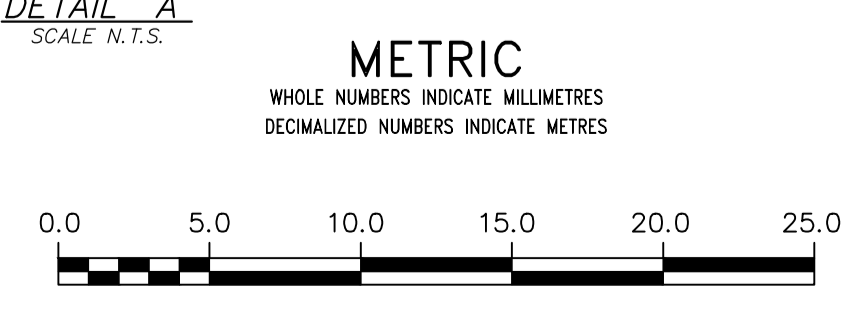
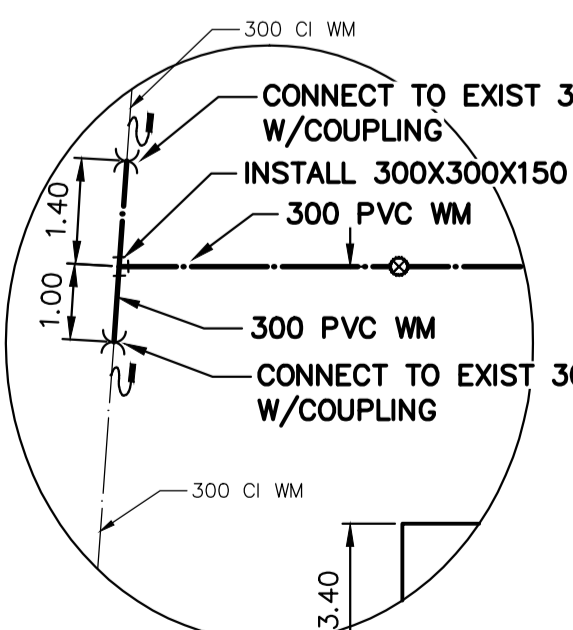
MUNROE AVENUE



HENDERSON HWY



MATCHLINE 2+42.50
SEE DWG D-15840



WARNING
IF POWER EQUIPMENT OR EXPLOSIVES ARE TO BE USED FOR EXCAVATION ON THIS PROJECT THE CONTRACTOR MUST:
1) NOTIFY THE GAS COMPANY OF THE PROPOSED LOCATION OF EXCAVATION.
2) TAKE PRECAUTION TO AVOID DAMAGE TO GAS COMPANY INSTALLATIONS.
SEE PROVINCIAL REGULATION 210/72 FOR DETAILS

LOCATION APPROVED
UNDERGROUND STRUCTURES
SUPV. U/G STRUCTURES COMMITTEE DATE
NOTE:
LOCATION OF UNDERGROUND STRUCTURES AS SHOWN ARE BASED ON THE BEST INFORMATION AVAILABLE BUT NO GUARANTEE IS GIVEN THAT ALL EXISTING UTILITIES ARE SHOWN OR THAT THE GIVEN LOCATIONS ARE EXACT. CONFIRMATION OF EXISTENCE AND EXACT LOCATION OF ALL SERVICES MUST BE OBTAINED FROM THE INDIVIDUAL UTILITIES BEFORE PROCEEDING WITH CONSTRUCTION.

VERTICAL DATUM: CGVD28 (HT2.0 Geoid)	
HORIZONTAL DATUM: NAD83 (June 1990), Zone 14	
DESIGNED BY	RG
CHECKED BY	SC
DRAWN BY	RS/AJ
APPROVED BY	KZ
SCALE:	
HORIZONTAL	1:250
VERTICAL	1:50
DATE	2021 02 08
PLLOT DATE:	2021 02 08

ENGINEER'S SEAL	
CONSULTANT DRAWING NUMBER	

FOR INDEX SEE D-15838

NOTE: ALL VALVES TO BE INSTALLED COUNTERCLOCKWISE TO CLOSE

THE CITY OF WINNIPEG
WATER AND WASTE DEPARTMENT
ENGINEERING DIVISION

2021/2022 MUNROE AVENUE PAVEMENT & WATER MAIN RENEWALS
MUNROE AVENUE
HENDERSON HIGHWAY TO
142.50 E OF HENDERSON HIGHWAY

SHEET 2 OF 6
CITY DRAWING NUMBER
D-15839