

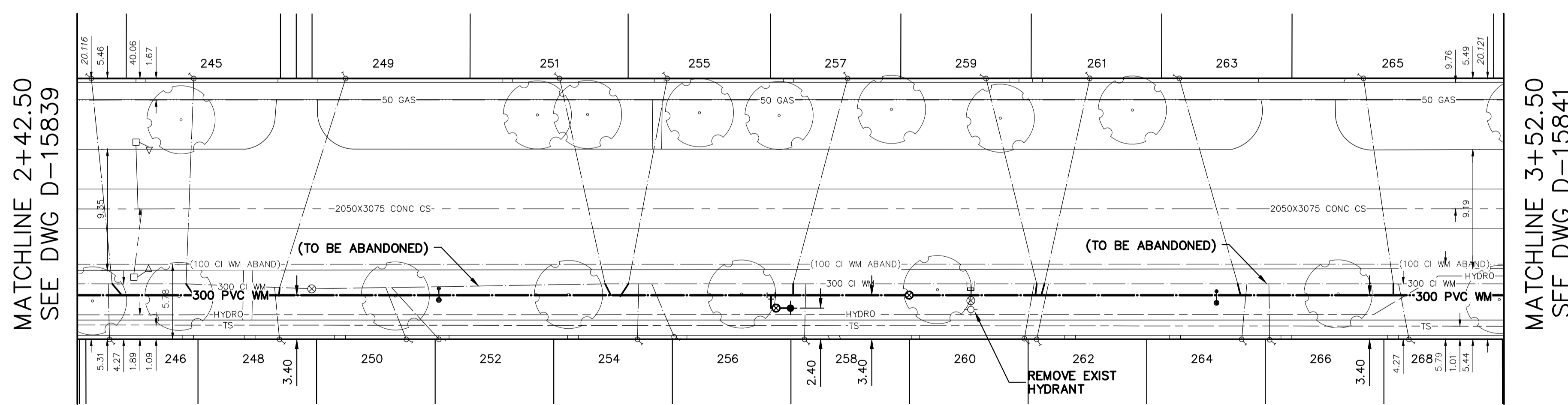
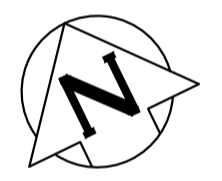
NOTE: CHAINAGES SHOWN ARE ALONG S. R. OF MUNROE AVE

MUNROE AVENUE

WATER SERVICE INFORMATION

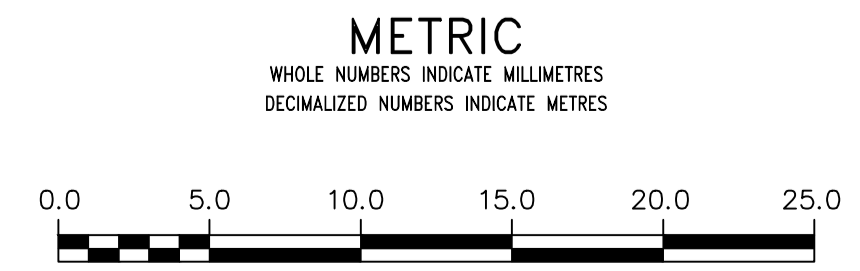
| ADDRESS | SIZE (mm) MATERIAL (STREET) | SIZE (mm) MATERIAL (PROP.) | SHORT & LONG MEASUREMENT | CORP LOCATION | REMARKS |
|-------------------|-----------------------------|----------------------------|------------------------------|---------------|-------------------|
| 541 HENDERSON HWY | 20 | 20 | OPP EL HSE | OPP OF S/C | RECONNECT SERVICE |
| RESIDENTIAL | CU | CU | 19.122 EEL AT HENDERSON HWY | OPP OF S/C | RECONNECT SERVICE |
| 208 MUNROE AVE | 20 | 20 | 1.18 EEL HSE | OPP OF S/C | RECONNECT SERVICE |
| RESIDENTIAL | CU | CU | 51.070 EEL AT HENDERSON HWY | OPP OF S/C | RECONNECT SERVICE |
| 210 MUNROE AVE | 20 | 20 | 0.50 WEL HSE | 0.5 E OF S/C | RECONNECT SERVICE |
| RESIDENTIAL | CU | CU | 51.970 EEL AT HENDERSON HWY | 0.5 W OF S/C | RECONNECT SERVICE |
| 215 MUNROE AVE | 20 | 20 | 0.19 WEL HSE | 1.3 W OF S/C | RECONNECT SERVICE |
| RESIDENTIAL | CU | CU | 51.341 EEL AT HENDERSON HWY | 1.3 W OF S/C | RECONNECT SERVICE |
| 219 MUNROE AVE | 20 | 20 | 0.76 EWL HSE | 2.9 W OF S/C | RECONNECT SERVICE |
| RESIDENTIAL | CU | CU | 52.141 EEL AT HENDERSON HWY | 2.9 W OF S/C | RECONNECT SERVICE |
| 222 MUNROE AVE | 20 | 20 | 2.54 WEL HSE | 3.5 W OF S/C | RECONNECT SERVICE |
| RESIDENTIAL | CU | CU | 63.870 EEL AT HENDERSON HWY | 3.5 W OF S/C | RECONNECT SERVICE |
| 223 MUNROE AVE | 20 | 20 | 2.54 WEL HSE | 3.5 W OF S/C | RECONNECT SERVICE |
| RESIDENTIAL | CU | CU | 72.641 EEL AT HENDERSON HWY | 3.5 W OF S/C | RECONNECT SERVICE |
| 224 MUNROE AVE | 20 | 20 | 3.16 WEL HSE | 1.8 E OF S/C | RECONNECT SERVICE |
| RESIDENTIAL | CU | CU | 76.670 EEL AT HENDERSON HWY | 1.8 E OF S/C | RECONNECT SERVICE |
| 226 MUNROE AVE | 20 | 20 | 0.72 WEL HSE | 0.3 E OF S/C | RECONNECT SERVICE |
| RESIDENTIAL | CU | CU | 79.870 EEL AT HENDERSON HWY | 0.3 E OF S/C | RECONNECT SERVICE |
| 227 MUNROE AVE | 20 | 20 | 2.55 WEL HSE | 0.1 W OF S/C | RECONNECT SERVICE |
| RESIDENTIAL | CU | CU | 84.541 EEL AT HENDERSON HWY | 0.1 W OF S/C | RECONNECT SERVICE |
| 228 MUNROE AVE | 20 | 20 | OPP WL HSE | 0.3 W OF S/C | RECONNECT SERVICE |
| RESIDENTIAL | CU | CU | 88.570 EEL AT HENDERSON HWY | 0.3 W OF S/C | RECONNECT SERVICE |
| 230 MUNROE AVE | 20 | 20 | 2.00 WEL HSE | 0.2 E OF S/C | RECONNECT SERVICE |
| RESIDENTIAL | CU | CU | 89.370 EEL AT HENDERSON HWY | 0.2 E OF S/C | RECONNECT SERVICE |
| 231 MUNROE AVE | 20 | 20 | 0.22 WEL HSE | 0.4 E OF S/C | RECONNECT SERVICE |
| RESIDENTIAL | CU | CU | 99.441 EEL AT HENDERSON HWY | 0.4 E OF S/C | RECONNECT SERVICE |
| 232 MUNROE AVE | 20 | 20 | 1.49 WEL HSE | 0.2 E OF S/C | RECONNECT SERVICE |
| RESIDENTIAL | CU | CU | 108.470 EEL AT HENDERSON HWY | 0.2 E OF S/C | RECONNECT SERVICE |
| 235 MUNROE AVE | 20 | 20 | 1.02 WEL HSE | 8.2 W OF S/C | RECONNECT SERVICE |
| RESIDENTIAL | CU | CU | 120.941 EEL AT HENDERSON HWY | 8.2 W OF S/C | RECONNECT SERVICE |
| 236 MUNROE AVE | 20 | 20 | 0.50 WEL HSE | 0.5 W OF S/C | RECONNECT SERVICE |
| RESIDENTIAL | CU | CU | 122.870 EEL AT HENDERSON HWY | 0.5 W OF S/C | RECONNECT SERVICE |
| 239 MUNROE AVE | 20 | 20 | 4.20 WEL HSE | 4.7 W OF S/C | RECONNECT SERVICE |
| RESIDENTIAL | CU | CU | 121.841 EEL AT HENDERSON HWY | 4.7 W OF S/C | RECONNECT SERVICE |
| 240 MUNROE AVE | 20 | 20 | 0.79 WEL HSE | 0.6 W OF S/C | RECONNECT SERVICE |
| RESIDENTIAL | CU | CU | 123.670 EEL AT HENDERSON HWY | 0.6 W OF S/C | RECONNECT SERVICE |
| 241 MUNROE AVE | 20 | 20 | 1.44 WEL HSE | 1.6 E OF S/C | RECONNECT SERVICE |
| RESIDENTIAL | CU | CU | 143.941 EEL AT HENDERSON HWY | 1.6 E OF S/C | RECONNECT SERVICE |
| 242 MUNROE AVE | 20 | 20 | 2.54 WEL HSE | 0.8 W OF S/C | RECONNECT SERVICE |
| RESIDENTIAL | CU | CU | 135.670 EEL AT HENDERSON HWY | 0.8 W OF S/C | RECONNECT SERVICE |
| 245 MUNROE AVE | 20 | 20 | 2.20 WEL HSE | 0.6 W OF S/C | RECONNECT SERVICE |
| RESIDENTIAL | CU | CU | 135.524 WEL AT BRAZIER ST | 0.6 W OF S/C | RECONNECT SERVICE |
| 246 MUNROE AVE | 20 | 20 | 1.82 WEL HSE | 0.1 W OF S/C | RECONNECT SERVICE |
| RESIDENTIAL | CU | CU | 141.622 WEL AT BRAZIER ST | 0.1 W OF S/C | RECONNECT SERVICE |
| 248 MUNROE AVE | 20 | 20 | 1.17 WEL HSE | 0.4 W OF S/C | RECONNECT SERVICE |
| RESIDENTIAL | CU | CU | 128.979 WEL AT BRAZIER ST | 0.4 W OF S/C | RECONNECT SERVICE |
| 249 MUNROE AVE | 20 | 20 | 0.55 WEL HSE | 5.0 W OF S/C | RECONNECT SERVICE |
| RESIDENTIAL | CU | CU | 128.311 WEL AT BRAZIER ST | 5.0 W OF S/C | RECONNECT SERVICE |
| 250 MUNROE AVE | 20 | 20 | 0.58 WEL HSE | 1.6 W OF S/C | RECONNECT SERVICE |
| RESIDENTIAL | CU | CU | 120.229 WEL AT BRAZIER ST | 1.6 W OF S/C | RECONNECT SERVICE |
| 251 MUNROE AVE | 20 | 20 | 3.50 WEL HSE | 3.5 E OF S/C | RECONNECT SERVICE |
| RESIDENTIAL | CU | CU | 103.022 WEL AT BRAZIER ST | 3.5 E OF S/C | RECONNECT SERVICE |
| 252 MUNROE AVE | 20 | 20 | 0.76 WEL HSE | 3.7 W OF S/C | RECONNECT SERVICE |
| RESIDENTIAL | CU | CU | 119.788 WEL AT BRAZIER ST | 3.7 W OF S/C | RECONNECT SERVICE |
| 254 MUNROE AVE | 20 | 20 | 0.60 WEL HSE | 0.1 E OF S/C | RECONNECT SERVICE |
| RESIDENTIAL | CU | CU | 100.722 WEL AT BRAZIER ST | 0.1 E OF S/C | RECONNECT SERVICE |
| 255 MUNROE AVE | 20 | 20 | 0.70 WEL HSE | 3.0 W OF S/C | RECONNECT SERVICE |
| RESIDENTIAL | CU | CU | 101.424 WEL AT BRAZIER ST | 3.0 W OF S/C | RECONNECT SERVICE |
| 256 MUNROE AVE | 20 | 20 | 1.03 WEL HSE | 1.7 W OF S/C | RECONNECT SERVICE |
| RESIDENTIAL | CU | CU | 99.722 WEL AT BRAZIER ST | 1.7 W OF S/C | RECONNECT SERVICE |
| 257 MUNROE AVE | 20 | 20 | 4.01 WEL HSE | 4.2 W OF S/C | RECONNECT SERVICE |
| RESIDENTIAL | CU | CU | 88.724 WEL AT BRAZIER ST | 4.2 W OF S/C | RECONNECT SERVICE |
| 258 MUNROE AVE | 20 | 20 | 0.10 WEL HSE | 0.1 E OF S/C | RECONNECT SERVICE |
| RESIDENTIAL | CU | CU | 87.814 WEL AT BRAZIER ST | 0.1 E OF S/C | RECONNECT SERVICE |
| 259 MUNROE AVE | 20 | 20 | 1.48 WEL HSE | 3.9 E OF S/C | RECONNECT SERVICE |
| RESIDENTIAL | CU | CU | 69.943 WEL AT BRAZIER ST | 3.9 E OF S/C | RECONNECT SERVICE |
| 260 MUNROE AVE | 20 | 20 | 1.50 WEL HSE | 0.8 E OF S/C | RECONNECT SERVICE |
| RESIDENTIAL | CU | CU | 70.241 WEL AT BRAZIER ST | 0.8 E OF S/C | RECONNECT SERVICE |
| 261 MUNROE AVE | 20 | 20 | 4.03 WEL HSE | 3.5 W OF S/C | RECONNECT SERVICE |
| RESIDENTIAL | CU | CU | 69.343 WEL AT BRAZIER ST | 3.5 W OF S/C | RECONNECT SERVICE |
| 262 MUNROE AVE | 20 | 20 | 0.80 WEL HSE | 0.9 W OF S/C | RECONNECT SERVICE |
| RESIDENTIAL | CU | CU | 69.141 WEL AT BRAZIER ST | 0.9 W OF S/C | RECONNECT SERVICE |
| 263 MUNROE AVE | 20 | 20 | 0.57 WEL HSE | 4.5 E OF S/C | RECONNECT SERVICE |
| RESIDENTIAL | CU | CU | 55.443 WEL AT BRAZIER ST | 4.5 E OF S/C | RECONNECT SERVICE |
| 264 MUNROE AVE | 20 | 20 | 0.10 WEL HSE | 0.4 E OF S/C | RECONNECT SERVICE |
| RESIDENTIAL | CU | CU | 53.041 WEL AT BRAZIER ST | 0.4 E OF S/C | RECONNECT SERVICE |
| 265 MUNROE AVE | 20 | 20 | 2.58 WEL HSE | 2.3 E OF S/C | RECONNECT SERVICE |
| RESIDENTIAL | CU | CU | 42.443 WEL AT BRAZIER ST | 2.3 E OF S/C | RECONNECT SERVICE |
| 266 MUNROE AVE | 20 | 20 | 0.44 WEL HSE | OPP OF S/C | RECONNECT SERVICE |
| RESIDENTIAL | CU | CU | 52.141 WEL AT BRAZIER ST | OPP OF S/C | RECONNECT SERVICE |
| 268 MUNROE AVE | 20 | 20 | 0.30 WEL HSE | 0.8 W OF S/C | RECONNECT SERVICE |
| RESIDENTIAL | CU | CU | 42.141 WEL AT BRAZIER ST | 0.8 W OF S/C | RECONNECT SERVICE |

*SERVICES TO BE RENEWED TO R. ALL OTHERS TO BE RECONNECTED



FOR INDEX SEE D-15838

NOTE: ALL VALVES TO BE INSTALLED COUNTERCLOCKWISE TO CLOSE



WARNING
IF POWER EQUIPMENT OR EXPLOSIVES ARE TO BE USED FOR EXCAVATION ON THIS PROJECT THE CONTRACTOR MUST:
1) NOTIFY THE GAS COMPANY OF THE PROPOSED LOCATION OF EXCAVATION.
2) TAKE PRECAUTION TO AVOID DAMAGE TO GAS COMPANY INSTALLATIONS.
SEE PROVINCIAL REGULATION 210/72 FOR DETAILS

LOCATION APPROVED UNDERGROUND STRUCTURES
SUPV. U/G STRUCTURES COMMITTEE DATE
NOTE:
LOCATION OF UNDERGROUND STRUCTURES AS SHOWN ARE BASED ON THE BEST INFORMATION AVAILABLE BUT NO GUARANTEE IS GIVEN THAT ALL EXISTING UTILITIES ARE SHOWN OR THAT THE GIVEN LOCATIONS ARE EXACT. CONFIRMATION OF EXISTENCE AND EXACT LOCATION OF ALL UTILITIES MUST BE OBTAINED FROM THE INDIVIDUAL UTILITIES BEFORE PROCEEDING WITH CONSTRUCTION.

VERTICAL DATUM: CGVD28 (HT2.0 Geoid)
HORIZONTAL DATUM: NAD83 (June 1990), Zone 14

| NO. | REVISIONS | DATE | BY |
|-----|-----------|------|----|
| | | | |

| | | | |
|-------------|------------|---------------------------|----|
| DESIGNED BY | RG | CHECKED BY | SC |
| DRAWN BY | RS/AJ | APPROVED BY | KZ |
| SCALE: | | RELEASED FOR CONSTRUCTION | |
| HORIZONTAL | 1:250 | | |
| VERTICAL | 1:50 | | |
| DATE | 2021 02 08 | DATE | |

ENGINEER'S SEAL
CONSULTANT DRAWING NUMBER

THE CITY OF WINNIPEG
WATER AND WASTE DEPARTMENT
ENGINEERING DIVISION

2021/2022 MUNROE AVE PAVEMENT & WATER MAIN RENEWALS
MUNROE AVENUE
142.5 E OF HENDERSON HIGHWAY TO 33.9 W OF BRAZIER STREET

SHEET 3 OF 6
CITY DRAWING NUMBER
D-15840