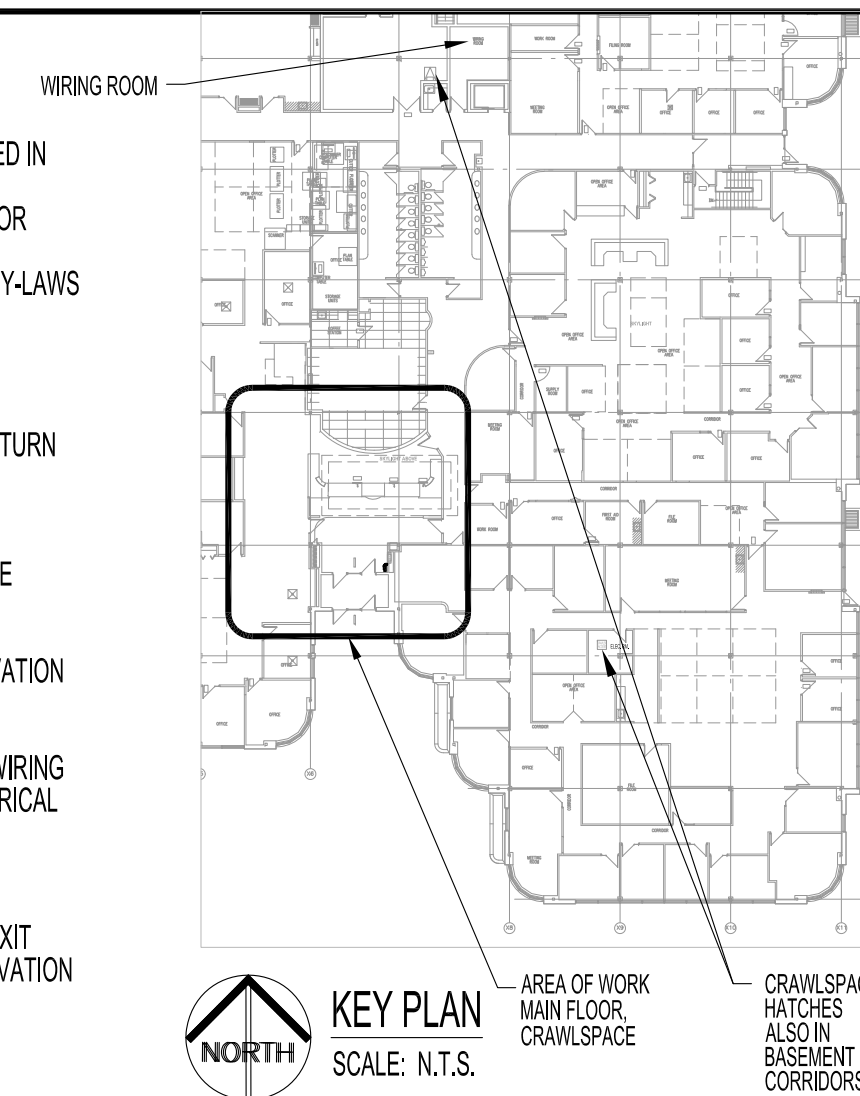


**PARTIAL MAIN FLOOR AND REFLECTED CEILING PLAN - DEMOLITION**  
 SCALE: 1/4"=1'-0"

**ELECTRICAL DEMOLITION NOTES: "X"**

ALSO SEE NOTES & SPECIFICATIONS.  
 ABANDONING PARTIAL DEMOLISH CABLES, WIRES, COMPONENTS & SUPPORTS ARE NOT PERMITTED IN AREA OF WORK.  
 DO NOT DISTURB OR DISCONNECT ANY ACTIVE WIRING & CABLING IN AREA OF WORK REQUIRED FOR OTHER AREAS. CONSULT WITH CONTRACT ADMINISTRATOR WHEN IN DOUBT.  
 ALL DISCARDED COMPONENTS SHALL BE DISPOSED OFF IN ENVIRONMENTAL COMPLIANCE WITH BY-LAWS & INDUSTRY STANDARDS.  
 ALL ELECTRICAL WORK SHALL BE PERFORMED BY QUALIFIED ELECTRICIANS.

- REMOVE WALL SCONES & WIRING BACK TO SOURCE. PROVIDE BLANK DEVICE FACEPLATE. RETURN WALL SCONES TO THE CITY.
- RELOCATE CEILING LUMINAIRE CENTERED TO NEW ROOMS & CIRCUIT AS SHOWN. REFER TO ELECTRICAL RENOVATION DRAWING. REWIRE CIRCUIT WHEN SERVING OTHER AREAS OUTSIDE BOUNDARY SHOWN.
- REWIRE LUMINAIRE CIRCUIT TO NEW MEETING ROOM CIRCUIT. REFER TO ELECTRICAL RENOVATION DRAWING.
- RELOCATE DEVICES AS SHOWN. TERMINATE WITH NEW END CONNECTORS & FACEPLATE. IF WIRING OR CABLING IS TOO SHORT, PROVIDE COMPLETE NEW HOME RUN CABLING. REFER TO ELECTRICAL RENOVATION DRAWING.
  - REMOVE VOICE CABLING BACK TO SOURCE.
- RELOCATE ILLUMINATED EXIT SIGN & CIRCUIT. PROVIDE NEW FACEPLATE OR PROVIDE NEW EXIT SIGN IF DIRECTIONAL CHEVONS/ARROWS ARE NOT AVAILABLE. REFER TO ELECTRICAL RENOVATION DRAWING.



**NOTES:**

THESE DRAWINGS SHALL NOT BE SCALED. CONSULT WITH THE CITY OF WINNIPEG & CONTRACT ADMINISTRATOR ON ANY CONCERNS.  
 CONTRACTOR RESPONSIBLE FOR RETAINING FUNCTION OF EXISTING FIRE PREVENTION SYSTEM.  
 SUBMISSION OF SITE MARK-UPS, AS-BUILTS, OPERATING & MAINTENANCE MANUALS & OTHER SUPPORTING DOCUMENTS TO THE CITY OF WINNIPEG ARE MANDATORY AT THE COMPLETION OF THIS PROJECT.  
 THE CONTRACTOR SHALL VISIT THE SITE AND SATISFY ONESELF ALL DIMENSIONS, DATUM, AND DETAILED INFORMATION SHOWN ARE CORRECT.  
 THE CONTRACTOR IS TO REVIEW & COORDINATE ALL ARCHITECTURAL, MECHANICAL & ELECTRICAL DRAWINGS FOR ADDITIONAL OPENINGS THROUGH FLOORS, WALLS & CEILINGS FOR DUCT, PIPE & ELECTRICAL RISERS & ALL OPENINGS NOT SHOWN ON DRAWINGS.  
 ALL OPENINGS THROUGH FIRE ASSEMBLIES INCLUDING FLOORS & CEILINGS SHALL BE FIRE STOPPED & SEALED WITH UL/C APPROVED FIRE STOPPING TO MAINTAIN THE INTEGRITY OF THE FIRE SEPARATION & PROVIDE A SMOKE-TIGHT BARRIER.  
 ALL PRODUCTS & MATERIALS TO BE USED & INSTALLED SHALL CONFORM TO MANUFACTURER'S SPECIFICATIONS, APPLICABLE CODES TO AUTHORITY HAVING JURISDICTION.  
 THE CONTRACTOR SHALL BE RESPONSIBLE TO PATCH & MAKE GOOD ALL EXISTING CONSTRUCTION AFFECTED BY THE REMOVAL OF ALL ITEMS FORMING PART OF THE RENOVATION WORK.  
 UNLESS OTHERWISE NOTED, ALL DEMOLISH & ABANDONED ELECTRICAL FIXTURES, COMPONENTS, RECEPTACLE & DATA WIRING SHALL BE REMOVED BACK TO SOURCE & TERMINATED AS PER APPLICABLE CODES. THIS INCLUDES WIRING CONTAINED IN HEADER DUCTS IN-FLOOR.  
 RECONNECT & TEST ALL FIRE PREVENTION EQUIPMENT.

**LUMINAIRE, SWITCH & LIGHTING CONTROL SCHEDULE**

TYPE	MANUFACTURER	CATALOGUE No.	LAMP	DESCRIPTION
Ⓐ	(NEW) HALO	HC8 20 D010347 81 MD C	LED 2000 LUMENS, 4000K	8" LED DOWNLIGHT, 347V, 80CRI, 8" CONICAL REFLECTOR, MEDIUM REFLECTOR, SPECULAR CLEAR FINISH, POLISH FLANGE
OS	(NEW) GREENGATE	ONW-D-1001-347-W		OCCUPANCY LIGHT SWITCH, DUAL TECH/SINGLE LEVEL WALL SWITCH SENSOR, 347V, WHITE, SINGLE GANG STAINLESS STEEL WALLPLATE.

RELAMP ALL EXISTING/REUSE LUMINAIRES WITH 32W, 4100K LAMPS.

**ABBREVIATIONS**

DESCRIPTION	DESCRIPTION
A	AMPERE, AMPACITY
AC	ABOVE COUNTER
ACT	ACOUSTIC CEILING TILE
AFF	ABOVE FINISH FLOOR
CCT	CIRCUIT, CCT: C= PANEL 'T'; CT= CIRCUIT '1' (T1)
CLNG	CEILING
D	DEMOLITION, REMOVE BACK TO SOURCE
DA	DOOR ACTUATOR
DSW	DISCONNECT SWITCH
DWG	DRAWING
E	EXISTING OR 'NO DESIGNATION'
ES	ELECTRIC STRIKE
GFCI	GROUND FAULT CIRCUIT INTERRUPTER
JB	JUNCTION BOX
N	NEW
N.I.C.	NOT IN CONTRACT
NTS	NOT TO SCALE
O/C	ON CENTER
OS	OCCUPANCY SENSOR
PNL	PANEL
R	RELOCATED LOCATION
RECP.T.	RECEPTACLE
SC	SEPARATE CIRCUIT (DEDICATED)
SW	SWITCH
TBD	TO BE DETERMINED
TYP.	TYPICAL

**ELECTRICAL LEGEND**

TYPE	DESCRIPTION
Ⓧ	DUPLEX RECEPTACLE
Ⓧ	FLOOR RECEPTACLE PEDESTAL WITH DUPLEX OR QUAD RECEPTACLES
Ⓧ	HEIGHT IN INCHES ABOVE FINISH FLOOR TO CENTERLINE OF DEVICE
Ⓧ	2-GANG DUPLEX RECEPTACLE
Ⓧ	GROUND FAULT CIRCUIT INTERRUPTER DUPLEX RECEPTACLE
Ⓧ	LIGHT SWITCH, SINGLE POLE
+D008	DURESS CALL BUTTON, AMSECO MODEL HUB-M, CONVERT TO LATCHING OPERATION
+D098	DOOR RELEASE BUTTON, AMSECO MODEL HUB-M
[ES]	ELECTRIC STRIKE, VON DUPRIN 6211 FSE
[ES2]	ELECTRIC STRIKE, VON DUPRIN 6211WF FS, TO BE CONFIRMED
[CA2]	CARD ACCESS, MULTICLASS SE READER, MINI MULLION SIZE, HID PART # RP10, BLACK
[CA4]	CARD ACCESS, MULTICLASS SE READER, LARGE WALL MOUNT, HID PART # RP40, BLACK
[DC]	DOOR CONTACT - FLUSH MOUNT, GE MODEL # 1076CW
[DA]	36" DOOR ACTUATOR, REFER TO ARCH DWG.
[DA3]	6" DIAMETER DOOR ACTUATOR, REFER TO ARCH. DWG.
[DO0]	AUTOMATIC GATE OPERATOR, REFER TO ARCH. DWG.
[DO01]	AUTOMATIC GATE OPERATOR, REFER TO ARCH. DWG.
[ES]	EXISTING REMOTE CONTROL (FOB) TO RELEASE (ES) ON EAST & WEST LOBBY DOORS
[J]	JUNCTION BOX
[FP]	FIRE ALARM MANUAL PULL STATION
[S]	FIRE ALARM STROBE SIREN
[S]	SMOKE DETECTOR, TO SUIT FIRE ALARM SYSTEM
[S]	SPEAKER
[D]	DATA PORT
[D]	FLOOR DATA PEDESTAL WITH DATA PORT(S)
[V]	VOICE (PHONE) PORT: CENTREX LAND LINE
[D]	FLOOR PHONE PEDESTAL WITH PHONE PORT(S)
[H]	HORN - SECURITY
[M]	MOTION DETECTOR- SECURITY
[PNL X]	ELECTRICAL PANEL
[T]	THERMOSTAT

**DRAWING LIST - ELECTRICAL**

SHEET No:	SHEET TITLE
E1	PARTIAL MAIN FLOOR AND REFLECTED CEILING PLAN: ELECTRICAL DEMOLITION; POWER AND SYSTEMS
E2	PARTIAL MAIN FLOOR AND REFLECTED CEILING PLAN: ELECTRICAL RENOVATION; POWER AND SYSTEMS
E3	ELECTRICAL SPECIFICATIONS

No.	REVISION/DESCRIPTION	BY	DATE
0	ISSUED FOR CONSTRUCTION	DTA	2021 02.12



DRAWN	DATE	CHECKED	DESIGNED	APPROVED
	2020.11.23			

THE CITY OF WINNIPEG  
 PLANNING, PROPERTY AND  
 DEVELOPMENT DEPARTMENT  
 MUNICIPAL ACCOMMODATIONS DIVISION  
 3-65 GARRY STREET, R3C 4K4

PROJECT  
 PUBLIC WORKS DEPARTMENT  
 SECURITY AND ACCESSIBILITY UPGRADES

1155 PACIFIC AVENUE, WINNIPEG, MB. TENDER # 139-2021

**SHEET TITLE**  
 PARTIAL MAIN FLOOR AND REFLECTED CEILING PLAN  
 ELECTRICAL DEMOLITION  
 POWER AND SYSTEMS

SCALE	PROJECT No:	SHEET No:
AS SHOWN	2019-032	E1