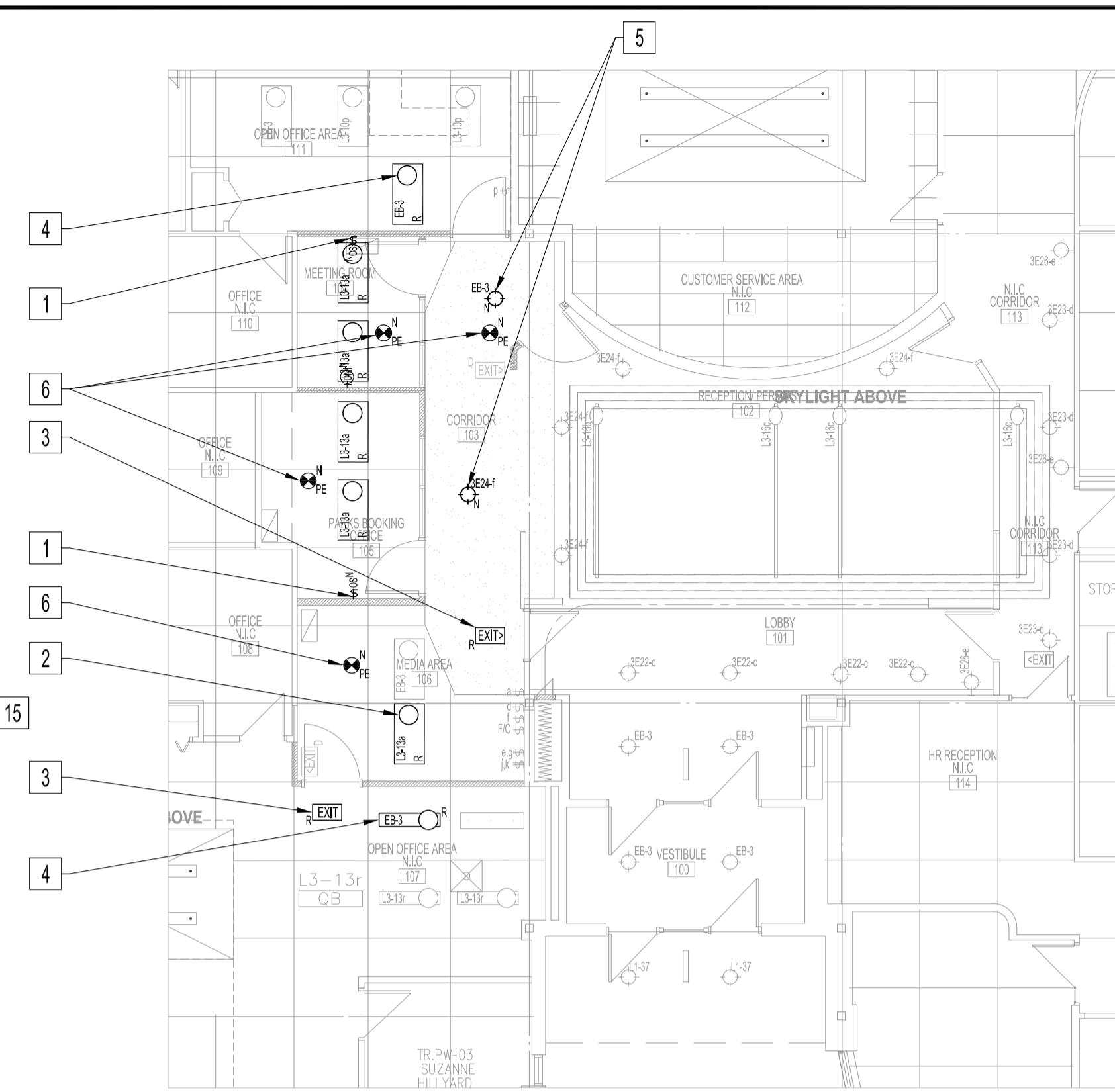


MAIN FLOOR PLAN - RENOVATION
SCALE: 1/4"=1'-0"



MAIN FLOOR REFLECTED CEILING PLAN - RENOVATION
SCALE: 1/8"=1'-0"

ELECTRICAL RENOVATION NOTES: "x"

- ALSO SEE NOTES & SPECIFICATIONS.
IN FINISHED SPACES, ALL WIRING & CABLING SHALL BE CONCEALED IN DOOR JAMB &/OR IN WALL/COUNTER CAVITIES.
ALL WIRING & CABLING IN CEILING SPACE SHALL BE PLENUM RATED (FT-6) AS PER LATEST CEC.
ROUTE NETWORK DATA CABLES ON EXISTING OR NEW J-HOOKS IN CEILING & CRAWLSPACES.
- PROVIDE NEW SWITCH & WIRE TO EXISTING CIRCUIT IN NEW ROOMS AS SHOWN.
 - RELOCATED LUMINAIRE FROM DEMOLITION DRAWING.
 - RELOCATED ILLUMINATED EXIT SIGN FROM DEMOLITION DRAWING. PROVIDE NEW FACEPLATE OR PROVIDE NEW EXIT SIGN IF DIRECTIONAL CHEVONS/ARROWS ARE NOT AVAILABLE.
 - REWIRE EXISTING LUMINAIRE TO EXISTING EMERGENCY CIRCUIT SHOWN.
 - PROVIDE NEW LUMINAIRE & WIRE TO EXISTING CIRCUIT.
 - PROVIDE PHOTOELECTRIC SMOKE DETECTOR & WIRE TO EXISTING FIRE ALARM SYSTEM. RETEST & RECERTIFICATION IS REQUIRED.
 - PROVIDE DUPLEX RECEPTACLE 120V, 15A BRANCH CIRCUIT TO SPARE 15A CIRCUIT BREAKER IN PANEL "3E". CONFIRM PANEL BRANCH CIRCUIT/BREAKER AVAILABILITY & PROVIDE NEW CIRCUITS/BREAKERS IF NOT AVAILABLE.
 - PROVIDE DATA CABLING TO WIRING ROOM #1 & TERMINATE TO EXISTING PATCH PANEL.
 - PROVIDE (2) INTERCONNECTING HDMI VERSION 2.0 FLUSH WALL PORTS WITH HDMI VERSION 2.0 CABLE IN WALL CAVITY FOR NEW WALL MOUNTED TV (REFER TO ARCHITECTURAL DRAWING), ONE AT TV MID-HEIGHT, OTHER AT SAME HEIGHT AS EXISTING RECEPTABLES.
 - POWER DOOR OPERATOR.
10.1. PROVIDE NEW POWER DOOR OPERATOR, REFER TO ARCH. DOOR SCHEDULE, WITH 120V, 15A CIRCUIT #122 RW90 IN EMT TO DESIGNATED 15A/1P CIRCUIT BREAKER, SETUP FOR "PUSH & GO" & DOOR ACTUATOR (DA), OPERATOR TO BE MOUNTED ON SECURED SIDE.
 - CARD ACCESS
11.1. PROVIDE (ES), (CA-1), (CA-2), (DC), (RTE).
11.2. PROVIDE HONEYWELL PROFUSION ACCESS CONTROL CABLE 3195 (PLENUM RATED, CMP LISTED) USING J-HOOK SUPPORT AT 6 FEET O/C FROM CARD ACCESS DOOR TO CARD ACCESS CABINET IN ???; PROVIDE COILED-UP 7 FEET UNTERMINATED CABLE LENGTH AT CARD ACCESS CABINET, LABEL CABLES WITH DOOR DESIGNATIONS; AT DOOR LOCATIONS, RUN ALL WIRES FROM HONEYWELL PROFUSION ACCESS CONTROL CABLE 3195 TO THE DOOR DEVICE LOCATIONS; REFER TO DRAWING FOR LOCATIONS, PRIOR TO INSTALLING CONTROL CABLE 3195, CONTACT THE CITY FST BRANCH FOR COORDINATION OF WIRE TERMINATIONS, SETUP & COMMISSIONING.
11.1.1. DOOR ELECTRIC STRIKE (ES): 184 STR (SETUP FOR FAIL-SECURE)
11.1.2. CARD ACCESS READER (CA-1), (CA-2): 226 STR OAS
11.1.3. DOOR CONTACT (DC): 222 STR
11.1.4. REQUEST TO EXIT (RTE): 224 STR
 - RELOCATED DATA & RECEPTACLE CABLING. TERMINATE ENDS WITH NEW & TEST. PROVIDE NEW FACEPLATE.
 - PROVIDE DOOR COMPONENTS SHOWN & WIRE TO CARD ACCESS HEAD END WITH HOME RUN HONEYWELL PROFUSION ACCESS CONTROL CABLE 3195. WIRE (DRB) TO RELEASE ELECTRIC STRIKE (FAILSAFE), CONFIRM ALL LOCATIONS OF DOOR COMPONENTS PRIOR TO START OF WORK. REFER TO ARCH. DOOR SCHEDULES FOR DOOR COMPONENTS.
13.1. PROVIDE NEW POWER GATE OPERATOR WITH DEDICATED 120V, 15A CIRCUIT, #122 RW90 IN EMT TO DESIGNATED 15A/1P CIRCUIT BREAKER.
13.2. (DA-1) 2 REQUIRED: (1) AT 9" AFF, (1) AT 36" AFF.
 - RELOCATE RECEPTABLES, DATA, VOICE, (DCB) USING EXISTING WIRING/CABLING TO NEW COUNTER BACK INTERIOR WALL. ALL DEVICES SHALL BE FLUSH MOUNTED WITH EXISTING WIRING/CABLING ROUTED INSIDE COUNTER WALL CAVITIES. SPLICING OF WIRING & CABLING NOT PERMITTED. PROVIDE NEW RECEPTABLES, DATA JACKS, SUPPORT BRACKETS & FACE PLATES. CONFIRM LOCATIONS PRIOR TO START OF WORK. UPON COMPLETION, TEST ALL SUPPORTS.
 - PROVIDE (DCB) & MOUNT UNDERSIDE OF COUNTER, CONFIRM LOCATION, CONNECT WITH 184 STRANDED WIRE IN 1"EMT TO EXISTING DURESS CONTROL SYSTEM IN ROOM ??? WITH 15 FEET COILED LENGTH IN CEILING. LABEL BOTH CABLE ENDS. TERMINATION & PROGRAMMING OF DURESS CONTROL SYSTEM IN ROOM ??? BY THE CITY.
 - VAV LOW-VOLTAGE SUPPLY
16.1. PROVIDE A DEDICATED 75 AMP CIRCUIT BREAKER TO (1) NEW TRANSFORMER WITH AUTOMATIC SHORT CIRCUIT PROTECTION 120VAC - 24 VAC, 100VA RATING, PLATE MOUNTING, MOUNT PLATE SECURELY TO WALL IN FINISH SPACE NEAR CEILING. LOCATION MUST BE EASILY ACCESSIBLE FOR SERVICING. LABEL "VAV TRANSFORMER (TR-1)".

NOTES:
REFER TO DRAWING E1 NOTES & DRAWING SPECIFICATIONS.

No.	REVISION/DESCRIPTION	BY	DATE
0	ISSUED FOR CONSTRUCTION	DTA	2021 02 12



DRAWN	DATE	CHECKED	DESIGNED	APPROVED
	2020.11.23	USER		

THE CITY OF WINNIPEG
PLANNING, PROPERTY AND
DEVELOPMENT DEPARTMENT
MUNICIPAL ACCOMMODATIONS DIVISION
3-65 GARRY STREET, R3C 4K4

PROJECT
PUBLIC WORKS DEPARTMENT
SECURITY AND ACCESSIBILITY UPGRADES

1155 PACIFIC AVENUE, WINNIPEG, MB. TENDER # 139-2021

SHEET TITLE
PARTIAL MAIN FLOOR PLAN
ELECTRICAL RENOVATION
POWER AND SYSTEMS

SCALE	PROJECT No:	SHEET No:
AS SHOWN	2019-032	E2