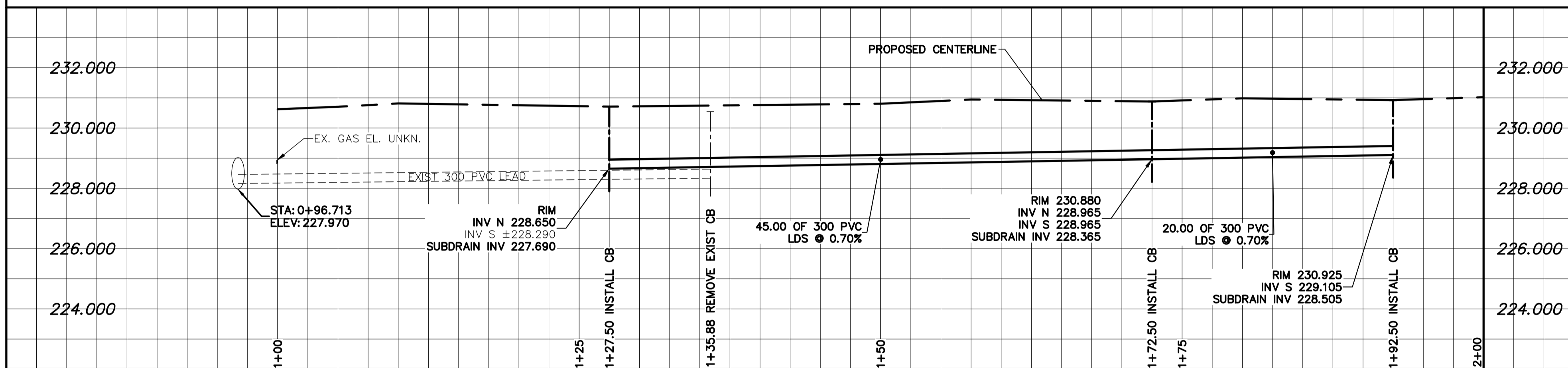
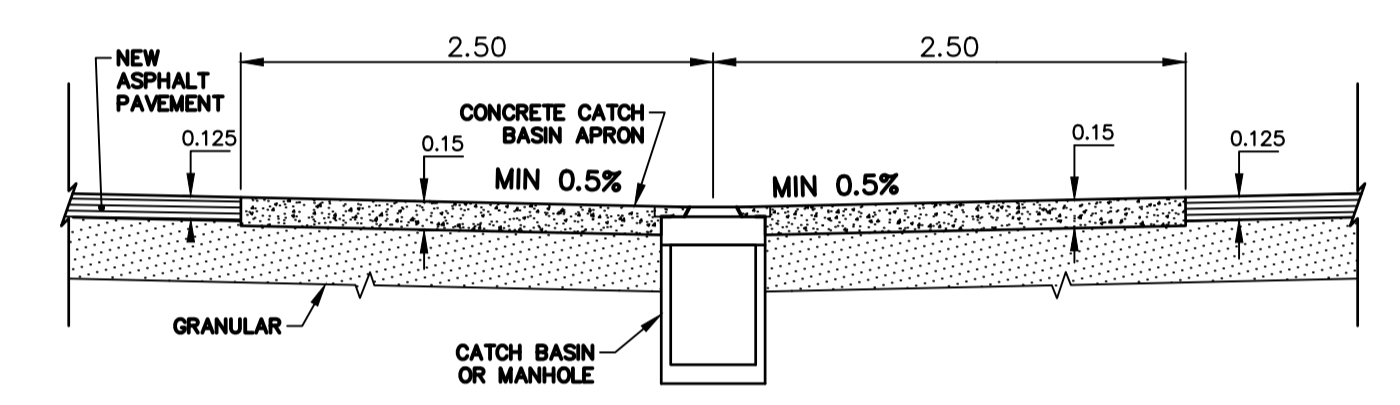


**ALLEY PAVEMENT PROFILE**  
SCALE: 1:250 HOR  
1:10 VER

- NOTES:**
- ALL WORK AND MATERIALS TO BE IN ACCORDANCE WITH THE LATEST REVISION OF THE CITY OF WINNIPEG STANDARD CONSTRUCTION SPECIFICATION.
  - CONTRACTOR TO CONFIRM THE LOCATION OF ALL UTILITIES/SERVICES IN THE FIELD PRIOR TO CONSTRUCTION.
  - CONTRACTOR TO AVOID DAMAGE TO EXISTING TREES WITHIN THE LIMITS OF THE ALLEY RIGHT OF WAY AS OUTLINED IN THE BID OPPORTUNITY.
  - HYDRO POLES AND ANCHORS REQUIRING TEMPORARY SUPPORT TO BE DONE AT THE EXPENSE OF THE CONTRACTOR AS REQUIRED.
  - WHERE UNSTABLE SUB-GRADES ARE ENCOUNTERED, ADDITIONAL EXCAVATION/SUB-BASE AND INSTALLATION OF GEOGRID TO BE DETERMINED BY THE CONTRACT ADMINISTRATOR AND CONSTRUCTED IN ACCORDANCE W/ CW-3110.
  - PROPOSED ELEVATIONS GIVEN ARE FOR EDGE OF PAVEMENT.
  - ISOLATE EXISTING HYDRO POLES AS PER SD-228C.
  - RENEW CURBS AND SIDEWALK AS DIRECTED BY THE CONTRACT ADMINISTRATOR.
  - MODIFIED BARRIER CURB TO BE CONSTRUCTED AT ALL BACK LANE RADII.
  - ALL EXISTING PRIVATE APPROACHES TO BE RENEWED AS DIRECTED BY THE CONTRACT ADMINISTRATOR.
  - ADJUSTMENTS TO PROPOSED CROSSFALL, WHERE REQUIRED, ARE TO BE DETERMINED BY THE CONTRACT ADMINISTRATOR TO SUIT EXISTING DRIVEWAYS, APPROACHES, ETC.
  - ALL BOULEVARD RESTORATION TO BE SODDED UNLESS OTHERWISE NOTED.
  - INSTALLATION OF LIP CURBS AND THEIR LIMITS THROUGH PRIVATE APPROACHES TO BE DETERMINED BY THE CONTRACT ADMINISTRATOR.
  - REMOVE, ADJUST, AND SUPPLY PRECAST SIDEWALK BLOCKS AS DIRECTED BY THE CONTRACT ADMINISTRATOR.



**LAND DRAINAGE SEWER PROFILE**  
SCALE: 1:250 HOR  
1:100 VER

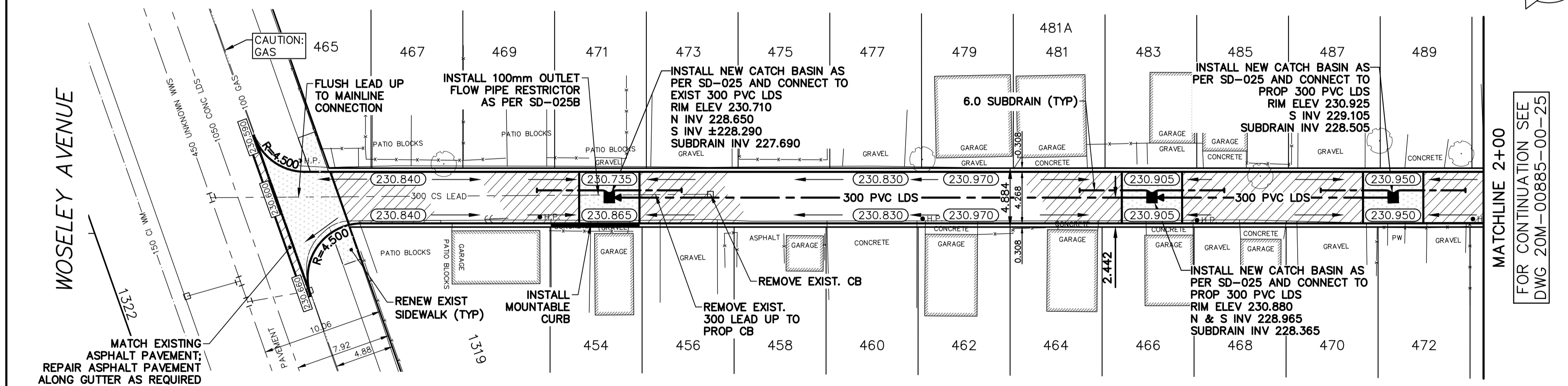


**TYPICAL CATCHBASIN APRON DETAIL**  
SCALE: N.T.S.

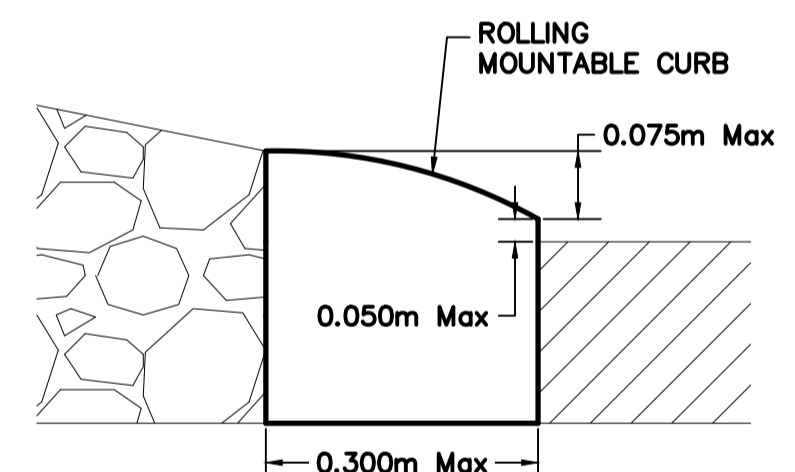
NOTE: CHAINAGES SHOWN ARE ALONG CL OF RIGHT-OF-WAY

THERE SHALL BE NO INCREASE IN CUMULATIVE PEAK FLOW ENTERING CS AND/OR SRS SYSTEMS AS A RESULT OF CONSTRUCTION WORKS SHOWN.

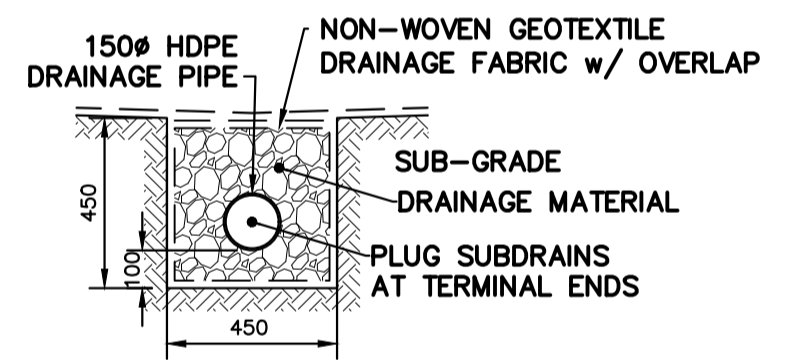
**CRAIG STREET**



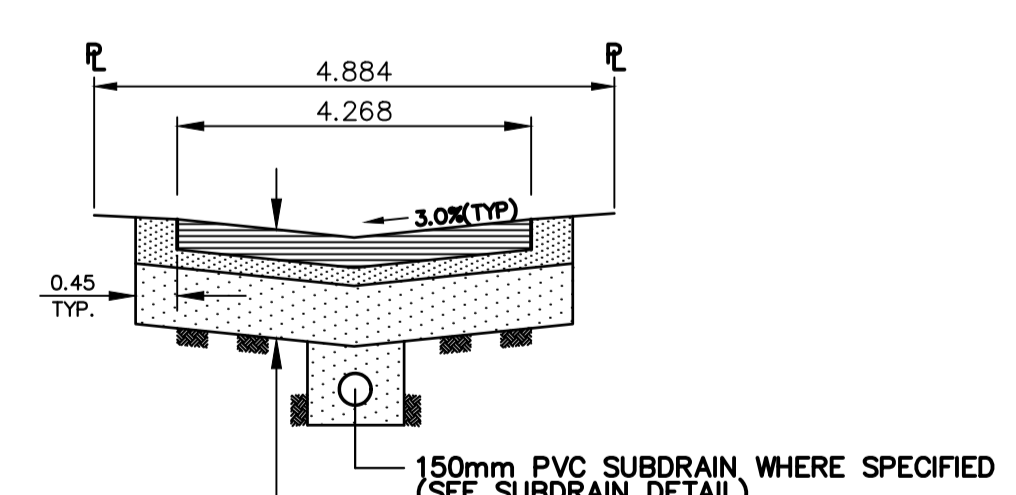
**STILES STREET**



**TYPICAL MOUNTABLE CURB DETAIL**  
SCALE: N.T.S.



**TYPICAL ALLEY SUBDRAIN DETAIL**  
SCALE: N.T.S.



**TYPICAL ALLEY CROSS SECTION**  
SCALE: N.T.S.

FOR TENDER PURPOSES ONLY  
NOT FOR CONSTRUCTION

**METRIC**  
WHOLE NUMBERS INDICATE MILLIMETRES  
DECIMALIZED NUMBERS INDICATE METRES  
UNLESS OTHERWISE NOTED

| EXISTING  | LEGEND - PLAN | PROPOSED | EXISTING  | LEGEND - PLAN       | PROPOSED          | EXISTING | LEGEND - PROFILE | PROPOSED    |     |       |        |                  |          |           |            |               |            |            |              |        |                |     |
|-----------|---------------|----------|-----------|---------------------|-------------------|----------|------------------|-------------|-----|-------|--------|------------------|----------|-----------|------------|---------------|------------|------------|--------------|--------|----------------|-----|
| WATERMAIN | HYDRANT       | VALVE    | CURB STOP | LAND DRAINAGE SEWER | WASTE WATER SEWER | CB LEAD  | MANHOLE          | CATCH BASIN | GAS | HYDRO | M.T.S. | CONCRETE/ASPHALT | SIDEWALK | CURB RAMP | ELEVATIONS | PROPERTY LINE | SURVEY BAR | HYDRO POLE | STREET LIGHT | JOINTS | ASPHALT REPAIR |     |
| ---       | ---           | ---      | ---       | ---                 | ---               | ---      | ---              | ---         | --- | ---   | ---    | ---              | ---      | ---       | ---        | ---           | ---        | ---        | ---          | ---    | ---            | --- |

**LOCATION APPROVED UNDERGROUND STRUCTURES**

| SUPV. | U/G | STRUCTURES | DATE |
|-------|-----|------------|------|
| ---   | --- | ---        | ---  |

NOTE:  
LOCATION OF UNDERGROUND STRUCTURES AS SHOWN ARE BASED ON THE BEST INFORMATION AVAILABLE BUT NO GUARANTEE IS GIVEN THAT ALL EXISTING UTILITIES ARE SHOWN OR THAT THE GIVEN LOCATIONS ARE EXACT. CONFIRMATION OF EXISTENCE AND EXACT LOCATION OF ALL SERVICES MUST BE OBTAINED FROM THE INDIVIDUAL UTILITIES BEFORE PROCEEDING WITH CONSTRUCTION.

**B.M. TOP NUT HYDRANT AT THE SOUTH WEST CORNER OF THE PORTAGE AVENUE AND CRAIG STREET INTERSECTION ELEV. 233.665**

| NO. | REVISIONS                 | DATE     | BY   |
|-----|---------------------------|----------|------|
| 3   | ISSUED FOR TENDER         | 04/02/21 | A.B. |
| 2   | WSP INTERNAL REVIEW       | 11/01/21 | A.B. |
| 1   | PRELIMINARY DESIGN REVIEW | 11/12/20 | D.R. |

**wsp**

| DESIGNED BY | CHECKED BY  |
|-------------|-------------|
| A.B.        | S.M.        |
| DRAWN BY    | APPROVED BY |
| D.R.        | S.M.        |

HOR. SCALE: 1:250  
VERT. SCALE: AS SHOWN

CONSULTANT DRAWING NO. 20M-00885-00-24

NOT FOR CONSTRUCTION

**THE CITY OF WINNIPEG**  
PUBLIC WORKS DEPARTMENT

2021 ALLEY RENEWALS  
CRAIG ST / STILES ST ALLEY  
FROM WOSELEY AVE TO STA 2+00

ASPHALT PAVEMENT

CITY DRAWING NO. LD-  
SHEET 2 OF 4  
BID OPPORTUNITY 17-2021

**ENGINEERS GEOSCIENTISTS MANITOBA**  
Certificate of Authorization  
WSP Canada Inc.  
No. 5750