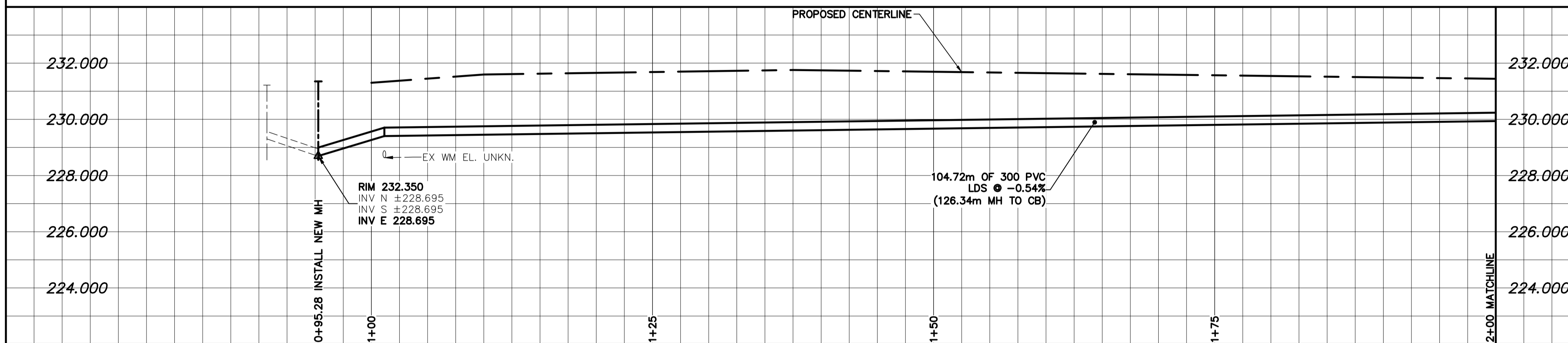


- NOTES:**
1. ALL WORK AND MATERIALS TO BE IN ACCORDANCE WITH THE LATEST REVISION OF THE CITY OF WINNIPEG STANDARD CONSTRUCTION SPECIFICATION.
  2. CONTRACTOR TO CONFIRM THE LOCATION OF ALL UTILITIES/SERVICES IN THE FIELD PRIOR TO CONSTRUCTION.
  3. CONTRACTOR TO AVOID DAMAGE TO EXISTING TREES WITHIN THE LIMITS OF THE ALLEY RIGHT OF WAY AS OUTLINED IN THE BID OPPORTUNITY.
  4. HYDRO POLES AND ANCHORS REQUIRING TEMPORARY SUPPORT TO BE DONE AT THE EXPENSE OF THE CONTRACTOR AS REQUIRED.
  5. WHERE UNSTABLE SUB-GRADES ARE ENCOUNTERED, ADDITIONAL EXCAVATION/SUB-BASE AND INSTALLATION OF GEOGRID TO BE DETERMINED BY THE CONTRACT ADMINISTRATOR AND CONSTRUCTED IN ACCORDANCE W/ CW-3110.
  6. PROPOSED ELEVATIONS GIVEN ARE FOR EDGE OF PAVEMENT.
  7. ISOLATE EXISTING HYDRO POLES AS PER SD-228C.
  8. RENEW CURB AND SIDEWALK AS DIRECTED BY THE CONTRACT ADMINISTRATOR.
  9. MODIFIED BARRIER CURB TO BE CONSTRUCTED AT ALL BACK LANE RADII.
  10. ALL EXISTING PRIVATE APPROACHES TO BE RENEWED AS DIRECTED BY THE CONTRACT ADMINISTRATOR.
  11. ADJUSTMENTS TO PROPOSED CROSSFALL, WHERE REQUIRED, ARE TO BE DETERMINED BY THE CONTRACT ADMINISTRATOR TO SUIT EXISTING DRIVEWAYS, APPROACHES, ETC.
  12. ALL BOULEVARD RESTORATION TO BE SDOODED UNLESS OTHERWISE NOTED.
  13. INSTALLATION OF LIP CURBS AND THEIR LIMITS THROUGH PRIVATE APPROACHES TO BE DETERMINED BY THE CONTRACT ADMINISTRATOR.
  14. REMOVE, ADJUST, AND SUPPLY PRECAST SIDEWALK BLOCKS AS DIRECTED BY THE CONTRACT ADMINISTRATOR.

**ALLEY PAVEMENT PROFILE**  
SCALE: 1:250 HOR  
1:10 VER

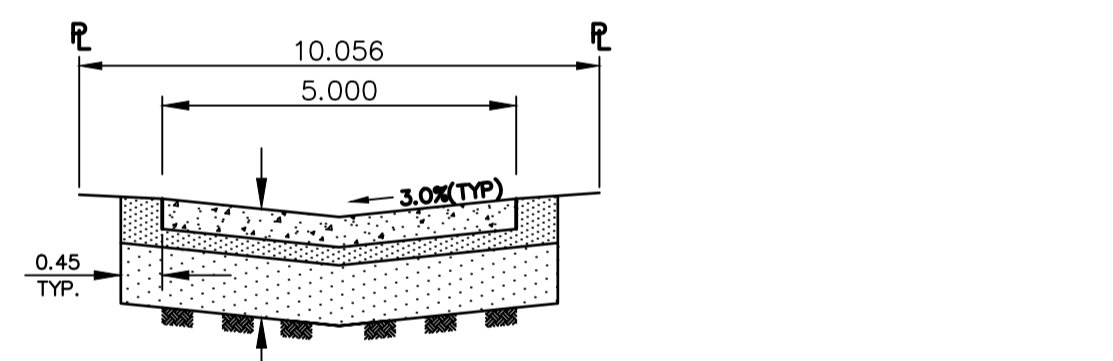
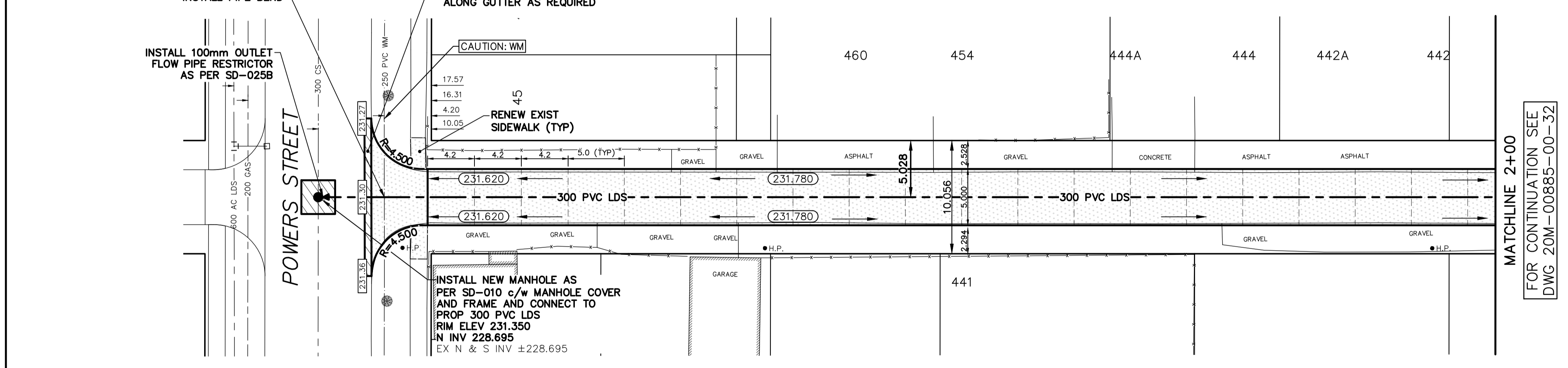


**LAND DRAINAGE SEWER PROFILE**  
SCALE: 1:250 HOR  
1:100 VER

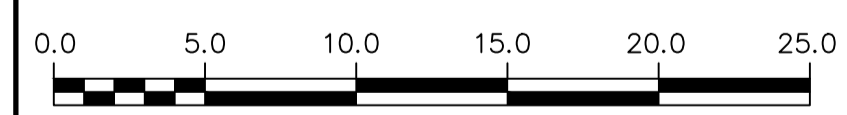
NOTE: CHAINAGES SHOWN ARE ALONG CL OF RIGHT-OF-WAY

THERE SHALL BE NO INCREASE IN CUMULATIVE PEAK FLOW ENTERING CS AND/OR SRS SYSTEMS AS A RESULT OF CONSTRUCTION WORKS SHOWN.

**DUFFERIN AVENUE**



**TYPICAL ALLEY CROSS SECTION**  
SCALE: N.T.S.



**METRIC**  
WHOLE NUMBERS INDICATE MILLIMETRES  
DECIMALIZED NUMBERS INDICATE METRES  
UNLESS OTHERWISE NOTED

FOR TENDER PURPOSES ONLY  
NOT FOR CONSTRUCTION

**ENGINEERS**  
GEOSCIENTISTS  
MANITOBA  
Certificate of Authorization  
WSP Canada Inc.  
No. 5750

WATERMAIN	CONCRETE/ASPHALT	150 WM	WATERMAIN	150 WM
HYDRANT	SIDEWALK	300 LDS	VALVE	300 LDS
VALVE	CURB RAMP	250 WWS	LAND DRAINAGE SEWER	300 LDS
CURB STOP	ELEVATIONS	(232.00)	WASTE WATER SEWER	250 WWS
LAND DRAINAGE SEWER	PROPERTY LINE		CENTERLINE	
WASTE WATER SEWER	SURVEY BAR		SOUTH & EAST GUTTER	
CB LEAD	HYDRO POLE		NORTH & WEST GUTTER	
MANHOLE	STREET LIGHT		S & E GARAGE PAD	
CATCH BASIN	JOINTS		N & W GARAGE PAD	
GAS	ASPHALT REPAIR			
HYDRO				
EXISTING	LEGEND - PLAN	PROPOSED	EXISTING	LEGEND - PROFILE
			PROPOSED	

**LOCATION APPROVED UNDERGROUND STRUCTURES**

SUPV. U/G STRUCTURES DATE COMMITTEE

NOTE:  
LOCATION OF UNDERGROUND STRUCTURES AS SHOWN ARE BASED ON THE BEST INFORMATION AVAILABLE BUT NO GUARANTEE IS GIVEN THAT ALL EXISTING UTILITIES ARE SHOWN OR THAT THE GIVEN LOCATIONS ARE EXACT. CONFIRMATION OF EXISTENCE AND EXACT LOCATION OF ALL SERVICES MUST BE OBTAINED FROM THE INDIVIDUAL UTILITIES BEFORE PROCEEDING WITH CONSTRUCTION.

B.M. TOP NUT HYDRANT AT THE SOUTH WEST CORNER OF THE DUFFERIN AVENUE AND POWERS STREET INTERSECTION ELEV. 232.608

NO	REVISIONS	DATE	D.R.
1	PRELIMINARY DESIGN REVIEW	11/12/20	D.R.
2	WSP INTERNAL REVIEW	11/01/21	A.B.
3	ISSUED FOR TENDER	04/02/21	A.B.

**wsp**

DESIGNED BY: A.B. CHECKED BY: S.M.  
DRAWN BY: D.R. APPROVED BY: S.M.

HOR. SCALE: 1:250  
VERT. SCALE: AS SHOWN

DATE: DECEMBER 2020

NOT FOR CONSTRUCTION

CONSULTANT DRAWING NO.  
20M-00885-00-31

**THE CITY OF WINNIPEG**  
PUBLIC WORKS DEPARTMENT

2021 ALLEY RENEWALS  
DUFFERIN AVE / JARVIS AVE ALLEY  
FROM POWERS ST TO STA 2+00

ASPHALT PAVEMENT

CITY DRAWING NO.  
LD-----  
SHEET 1 OF 2  
BID OPPORTUNITY  
17-2021