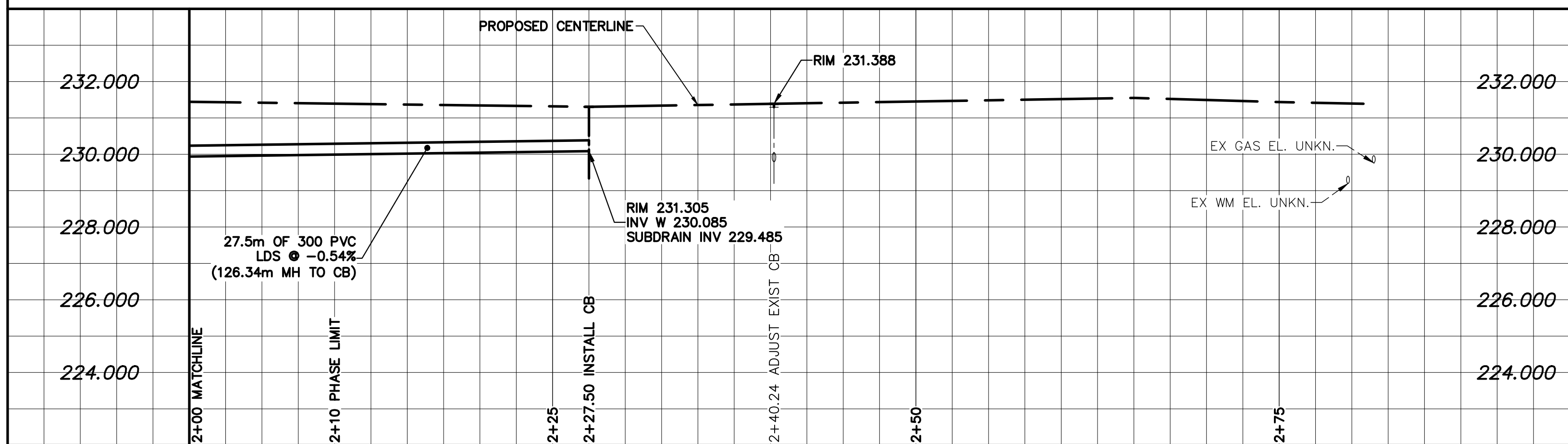


ALLEY PAVEMENT PROFILE
SCALE: 1:250 HOR
1:10 VER

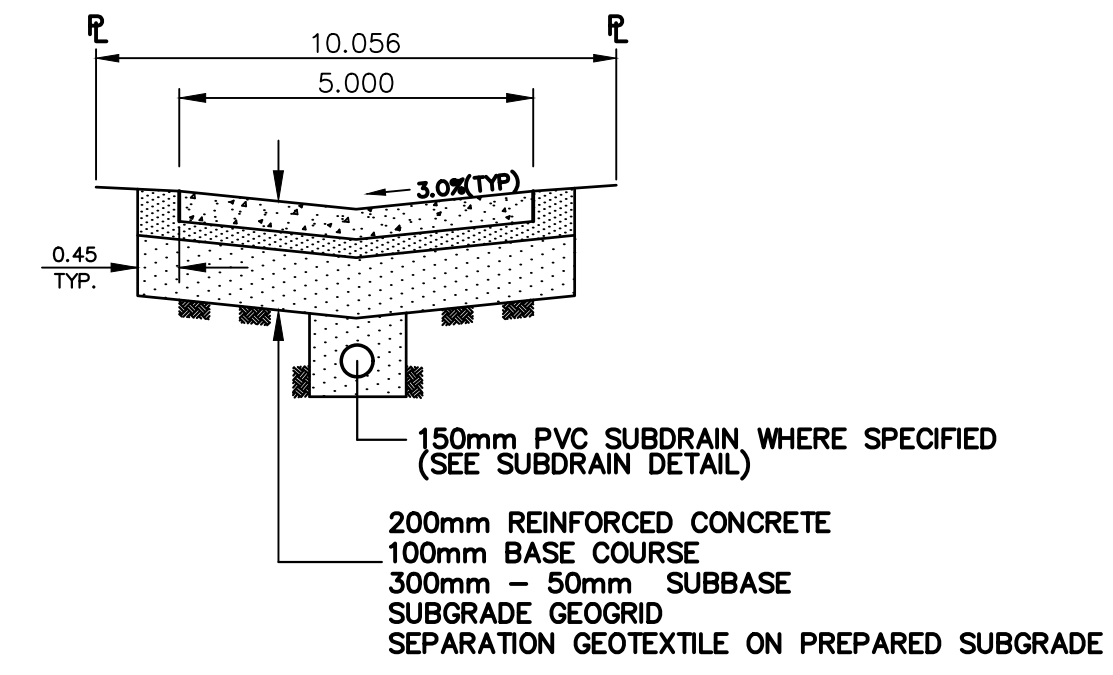
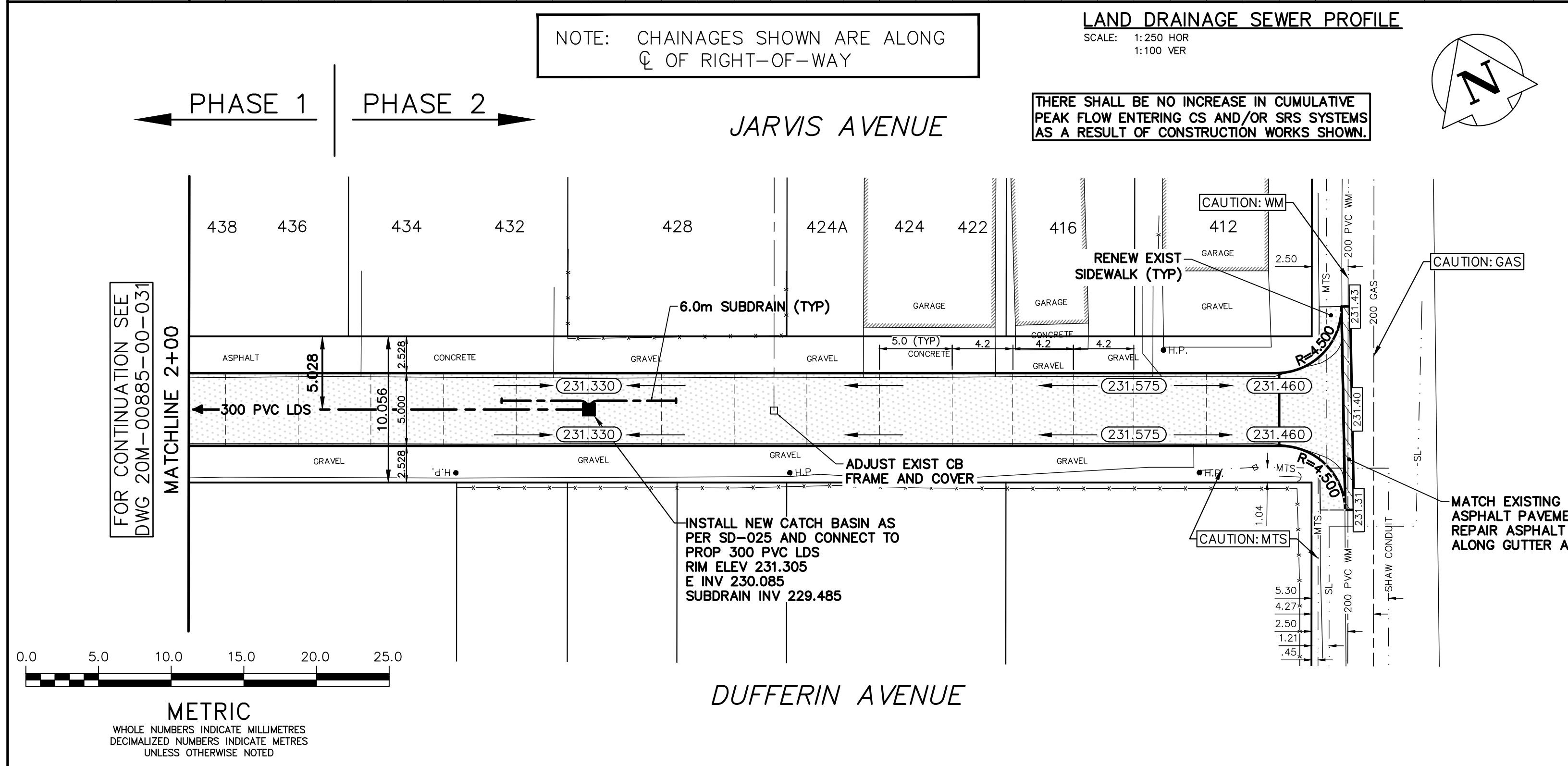
- NOTES:**
1. ALL WORK AND MATERIALS TO BE IN ACCORDANCE WITH THE LATEST REVISION OF THE CITY OF WINNIPEG STANDARD CONSTRUCTION SPECIFICATION.
 2. CONTRACTOR TO CONFIRM THE LOCATION OF ALL UTILITIES/SERVICES IN THE FIELD PRIOR TO CONSTRUCTION.
 3. CONTRACTOR TO AVOID DAMAGE TO EXISTING TREES WITHIN THE LIMITS OF THE ALLEY RIGHT OF WAY AS OUTLINED IN THE BID OPPORTUNITY.
 4. HYDRO POLES AND ANCHORS REQUIRING TEMPORARY SUPPORT TO BE DONE AT THE EXPENSE OF THE CONTRACTOR AS REQUIRED.
 5. WHERE UNSTABLE SUB-GRADES ARE ENCOUNTERED, ADDITIONAL EXCAVATION/SUB-BASE AND INSTALLATION OF GEGRID TO BE DETERMINED BY THE CONTRACT ADMINISTRATOR AND CONSTRUCTED IN ACCORDANCE W/ CW-310.
 6. PROPOSED ELEVATIONS GIVEN ARE FOR EDGE OF PAVEMENT.
 7. ISOLATE EXISTING HYDRO POLES AS PER SD-228C.
 8. RENEW CURB AND SIDEWALK AS DIRECTED BY THE CONTRACT ADMINISTRATOR.
 9. MODIFIED BARRIER CURB TO BE CONSTRUCTED AT ALL BACK LANE RAIL.
 10. ALL EXISTING PRIVATE APPROACHES TO BE RENEWED AS DIRECTED BY THE CONTRACT ADMINISTRATOR.
 11. ADJUSTMENTS TO PROPOSED CROSSFALL, WHERE REQUIRED, ARE TO BE DETERMINED BY THE CONTRACT ADMINISTRATOR TO SUIT EXISTING DRIVEWAYS, APPROACHES, ETC.
 12. ALL BOULEVARD RESTORATION TO BE SODDED UNLESS OTHERWISE NOTED.
 13. INSTALLATION OF LIP CURBS AND THEIR LIMITS THROUGH PRIVATE APPROACHES TO BE DETERMINED BY THE CONTRACT ADMINISTRATOR.
 14. REMOVE, ADJUST, AND SUPPLY PRECAST SIDEWALK BLOCKS AS DIRECTED BY THE CONTRACT ADMINISTRATOR.



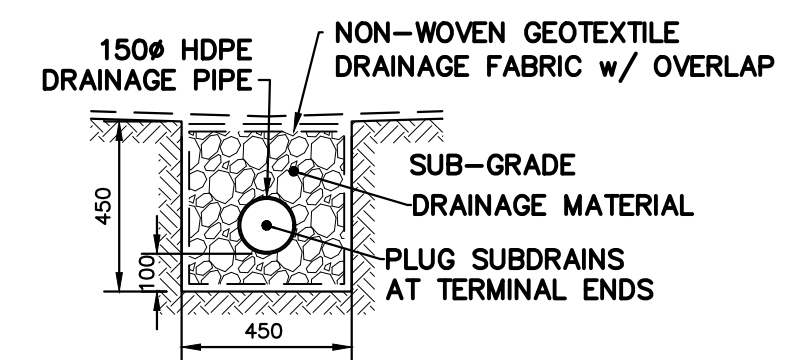
LAND DRAINAGE SEWER PROFILE
SCALE: 1:250 HOR
1:100 VER

NOTE: CHAINAGES SHOWN ARE ALONG ϕ OF RIGHT-OF-WAY

THERE SHALL BE NO INCREASE IN CUMULATIVE PEAK FLOW ENTERING CS AND/OR SRS SYSTEMS AS A RESULT OF CONSTRUCTION WORKS SHOWN.



TYPICAL ALLEY CROSS SECTION
SCALE: N.T.S.



TYPICAL ALLEY SUBDRAIN DETAIL
SCALE: N.T.S.

FOR TENDER PURPOSES ONLY
NOT FOR CONSTRUCTION

**ENGINEERS
GEOSCIENTISTS
MANITOBA**
Certificate of Authorization
WSP Canada Inc.
No. 5750

EXISTING	LEGEND - PLAN	PROPOSED	EXISTING	LEGEND - PLAN	PROPOSED	EXISTING	LEGEND - PROFILE	PROPOSED
---	WATERMAIN	---	---	M.T.S.	---	---	150 WM	---
---	HYDRANT	---	---	CONCRETE/ASPHALT	---	---	150 WM	---
---	VALVE	---	---	SIDEWALK	---	---	300 LDS	---
---	CURB STOP	---	---	CURB RAMP	---	---	250 WWS	---
---	LAND DRAINAGE SEWER	---	---	ELEVATIONS	---	---	(232.00)	---
---	WASTE WATER SEWER	---	---	PROPERTY LINE	---	---	(232.000)	---
---	CB LEAD	---	---	SURVEY BAR	---	---		---
---	MANHOLE	---	---	HYDRO POLE	---	---		---
---	CATCH BASIN	---	---	STREET LIGHT	---	---		---
---	GAS	---	---	JOINTS	---	---		---
---	HYDRO	---	---	ASPHALT REPAIR	---	---		---

LOCATION APPROVED UNDERGROUND STRUCTURES

SUPV. COMMITTEE	U/G	STRUCTURES	DATE

NOTE: LOCATION OF UNDERGROUND STRUCTURES AS SHOWN ARE BASED ON THE BEST INFORMATION AVAILABLE BUT NO GUARANTEE IS GIVEN THAT ALL EXISTING UTILITIES ARE SHOWN OR THAT THE GIVEN LOCATIONS ARE EXACT. CONFIRMATION OF EXISTENCE AND EXACT LOCATION OF ALL SERVICES MUST BE OBTAINED FROM THE INDIVIDUAL UTILITIES BEFORE PROCEEDING WITH CONSTRUCTION.

B.M. TOP NUT HYDRANT AT THE SOUTH WEST CORNER OF THE DUFFERIN AVENUE AND POWERS STREET INTERSECTION ELEV. 232.608

NO.	ISSUED FOR TENDER	DATE	BY
3	ISSUED FOR TENDER	04/02/21	A.B.
2	WSP INTERNAL REVIEW	11/01/21	A.B.
1	PRELIMINARY DESIGN REVIEW	11/12/20	D.R.
NO	REVISIONS	DATE	BY

wsp

WSP Canada Incorporated
Suite 111 - 93 Lombard Ave
Winnipeg, MB R3B 3B1
t. 204.943.3178
f. 204.943.4948
www.wsp.com

DESIGNED BY	CHECKED BY
A.B.	S.M.
DRAWN BY	APPROVED BY
D.R.	S.M.

HOR. SCALE: 1:250
VERT. SCALE: AS SHOWN

CONSULTANT DRAWING NO. 20M-00885-00-32

NOT FOR CONSTRUCTION

THE CITY OF WINNIPEG
PUBLIC WORKS DEPARTMENT

2021 ALLEY RENEWALS
DUFFERIN AVE / JARVIS AVE ALLEY
FROM STA 2+00 TO SALTER ST ALLEY

ASPHALT PAVEMENT

CITY DRAWING NO. LD-
SHEET 2 OF 2
BID OPPORTUNITY 17-2021