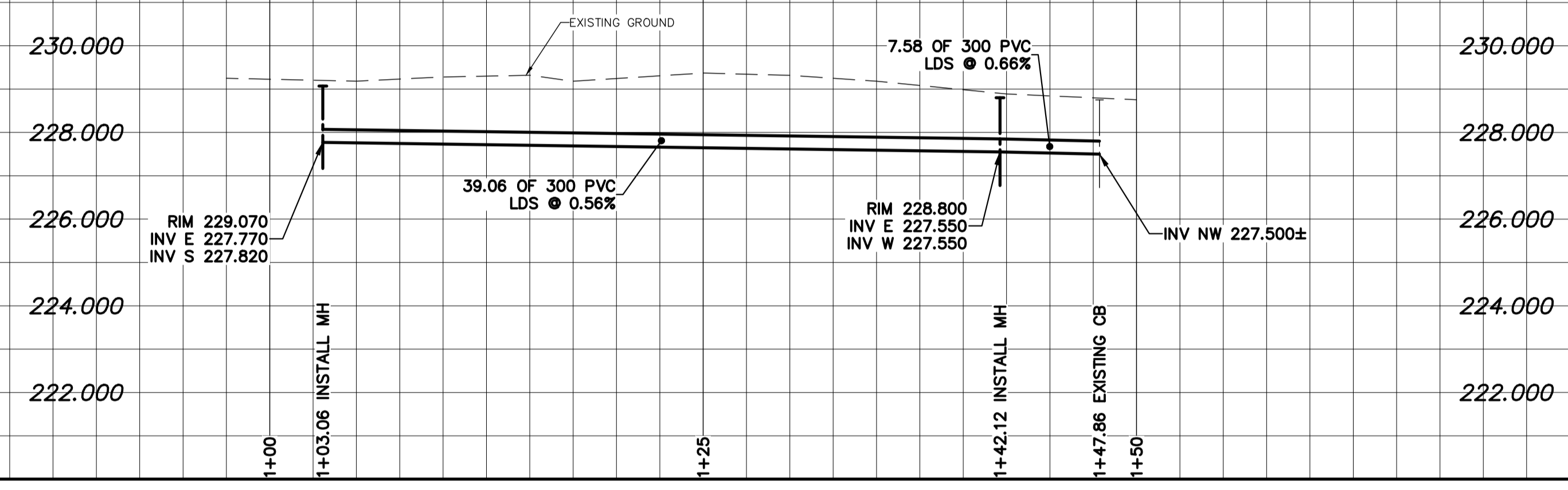


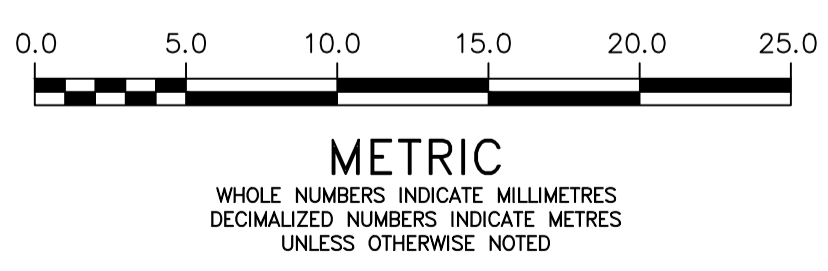
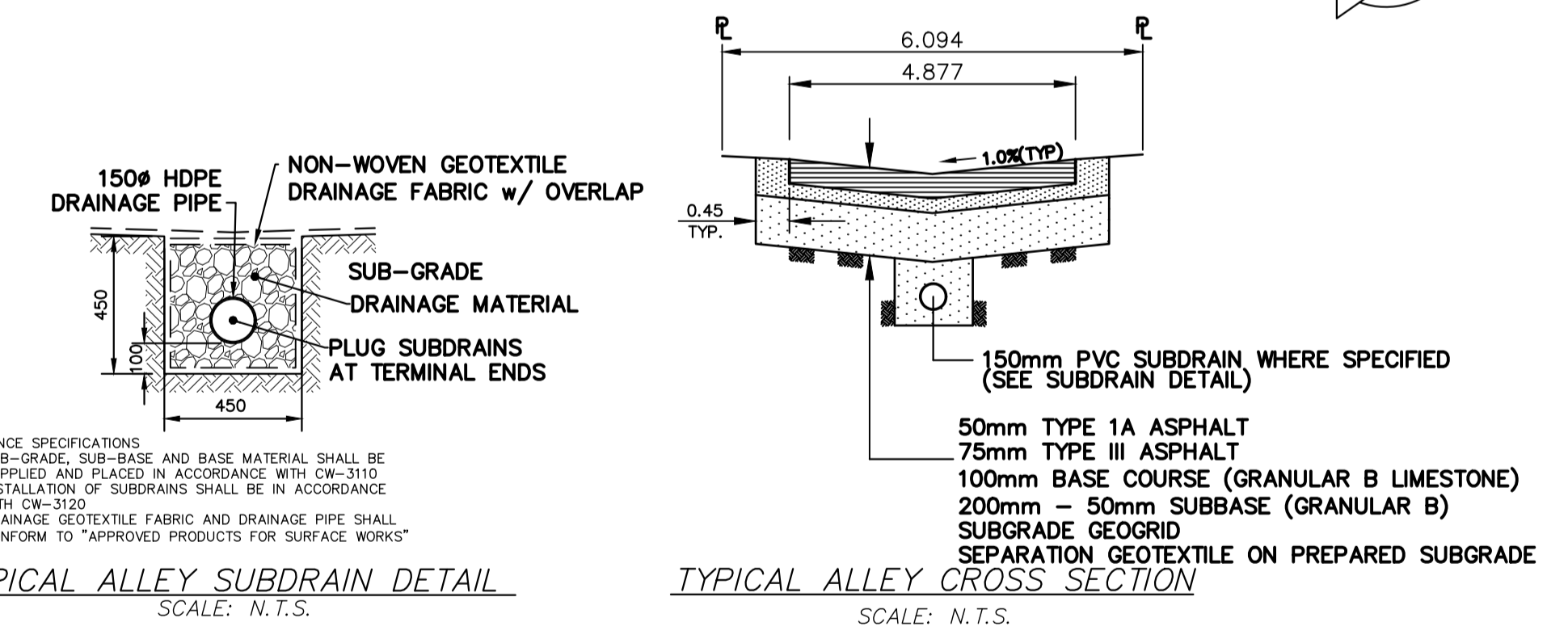
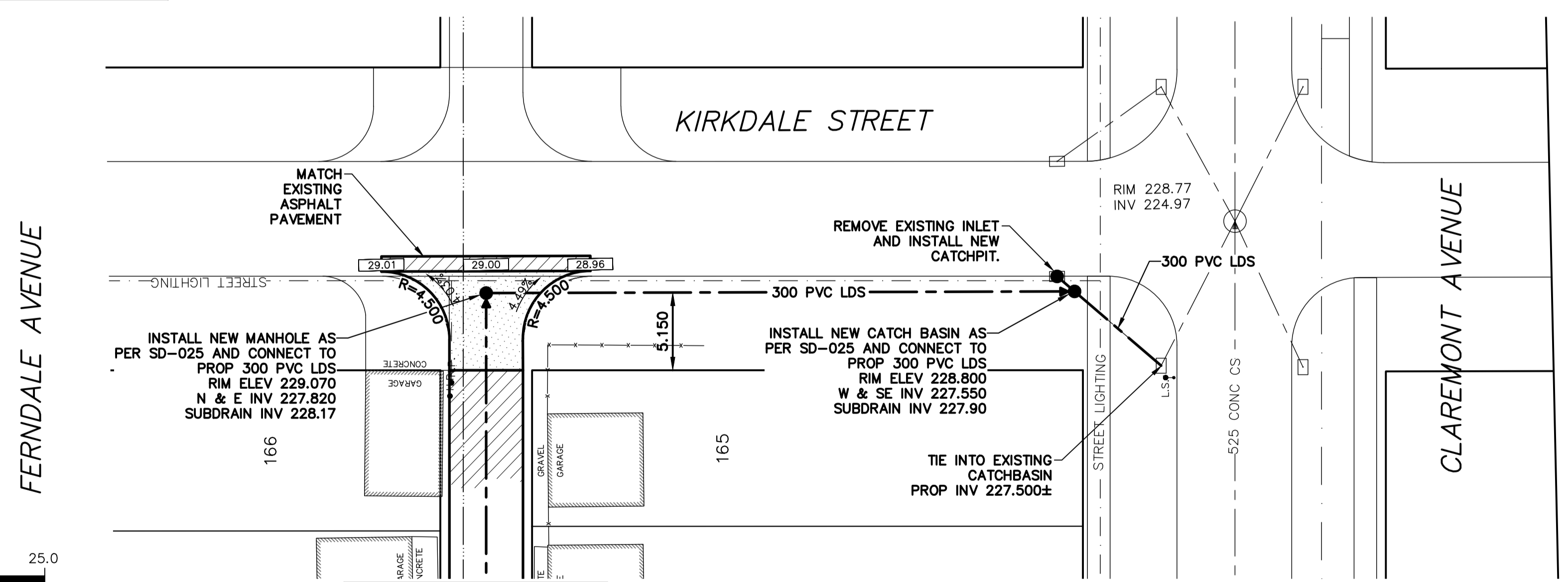
- NOTES:**
1. ALL WORK AND MATERIALS TO BE IN ACCORDANCE WITH THE LATEST REVISION OF THE CITY OF WINNIPEG STANDARD CONSTRUCTION SPECIFICATION.
 2. CONTRACTOR TO CONFIRM THE LOCATION OF ALL UTILITIES/SERVICES IN THE FIELD PRIOR TO CONSTRUCTION.
 3. CONTRACTOR TO AVOID DAMAGE TO EXISTING TREES WITHIN THE LIMITS OF THE ALLEY RIGHT OF WAY AS OUTLINED IN THE BID OPPORTUNITY.
 4. HYDRO POLES AND ANCHORS REQUIRING TEMPORARY SUPPORT TO BE DONE AT THE EXPENSE OF THE CONTRACTOR AS REQUIRED.
 5. WHERE UNSTABLE SUB-GRADES ARE ENCOUNTERED, ADDITIONAL EXCAVATION/SUB-BASE AND INSTALLATION OF GEOGRID TO BE DETERMINED BY THE CONTRACT ADMINISTRATOR AND CONSTRUCTED IN ACCORDANCE W/ CW-3110.
 6. PROPOSED ELEVATIONS GIVEN ARE FOR EDGE OF PAVEMENT.
 7. ISOLATE EXISTING HYDRO POLES AS PER SD-228C.
 8. RENEW CURB AND SIDEWALK AS DIRECTED BY THE CONTRACT ADMINISTRATOR.
 9. MODIFIED BARRIER CURB TO BE CONSTRUCTED AT ALL BACK LANE RADI.
 10. ALL EXISTING PRIVATE APPROACHES TO BE RENEWED AS DIRECTED BY THE CONTRACT ADMINISTRATOR.
 11. ADJUSTMENTS TO PROPOSED CROSSFALL, WHERE REQUIRED, ARE TO BE DETERMINED BY THE CONTRACT ADMINISTRATOR TO SUIT EXISTING DRIVEWAYS, APPROACHES, ETC.
 12. ALL BOULEVARD RESTORATION TO BE SODDED UNLESS OTHERWISE NOTED.
 13. INSTALLATION OF LIP CURBS AND THEIR LIMITS THROUGH PRIVATE APPROACHES TO BE DETERMINED BY THE CONTRACT ADMINISTRATOR.
 14. REMOVE, ADJUST, AND SUPPLY PRECAST SIDEWALK BLOCKS AS DIRECTED BY THE CONTRACT ADMINISTRATOR.

ALLEY PAVEMENT PROFILE
SCALE: 1:250 HOR
1:10 VER



LAND DRAINAGE SEWER PROFILE
SCALE: 1:250 HOR
1:100 VER

NOTE: CHAINAGES SHOWN ARE ALONG CL OF RIGHT-OF-WAY



FOR CONTINUATION SEE DWG 20M-00885-00-39

FOR TENDER PURPOSES ONLY
NOT FOR CONSTRUCTION

ENGINEERS GEOSCIENTISTS MANTOBA
Certificate of Authorization
WSP Canada Inc.
No. 5750

WATERMAIN	CONCRETE/ASPHALT	150 WM	WATERMAIN	150 WM	
HYDRANT	SIDEWALK	300 LDS	VALVE	300 LDS	
VALVE	CURB RAMP	250 WWS	LAND DRAINAGE SEWER	300 LDS	
CURB STOP	ELEVATIONS	(232.000)	WASTE WATER SEWER	250 WWS	
LAND DRAINAGE SEWER	PROPERTY LINE		CENTERLINE		
WASTE WATER SEWER	SURVEY BAR		SOUTH & EAST GUTTER		
CB LEAD	HYDRO POLE		NORTH & WEST GUTTER		
MANHOLE	STREET LIGHT		S & E GARAGE PAD		
CATCH BASIN	JOINTS		N & W GARAGE PAD		
GAS	ASPHALT REPAIR				
HYDRO					
EXISTING	LEGEND - PLAN	PROPOSED	EXISTING	LEGEND - PROFILE	PROPOSED

LOCATION APPROVED UNDERGROUND STRUCTURES		B.M. ELEV.	
SUPV. U/G COMMITTEE	STRUCTURES	DATE	
NOTE: LOCATION OF UNDERGROUND STRUCTURES AS SHOWN ARE BASED ON THE BEST INFORMATION AVAILABLE BUT NO GUARANTEE IS GIVEN THAT ALL EXISTING UTILITIES ARE SHOWN OR THAT THE GIVEN LOCATIONS ARE EXACT. CONFIRMATION OF EXISTENCE AND EXACT LOCATION OF ALL SERVICES MUST BE OBTAINED FROM THE INDIVIDUAL UTILITIES BEFORE PROCEEDING WITH CONSTRUCTION.			
3	ISSUED FOR TENDER	04/02/21	A.B.
2	WSP INTERNAL REVIEW	11/01/21	A.B.
1	PRELIMINARY DESIGN REVIEW	11/12/20	D.R.
NO	REVISIONS	DATE	BY

wsp		WSP Canada Incorporated Suite 111 - 93 Lombard Ave Winnipeg, MB R3B 3B1 t. 204.943.3178 f. 204.943.4948 www.wsp.com	
DESIGNED BY	A.B.	CHECKED BY	R.H.
DRAWN BY	D.R.	APPROVED BY	S.M.
HOR. SCALE: 1:250		RELEASED FOR CONSTRUCTION	
VERT. SCALE: AS SHOWN		CONSULTANT DRAWING NO. 20M-00885-00-40	
DECEMBER 2020		---	

THE CITY OF WINNIPEG
PUBLIC WORKS DEPARTMENT

2021 ALLEY RENEWALS
FERNDALE AVE / CLAREMONT AVE ALLEY
FROM STA 1+00 TO CLAREMONT AVENUE

ASPHALT PAVEMENT

CITY DRAWING NO.
LD-----
SHEET 3 OF 3

BID OPPORTUNITY
17-2021