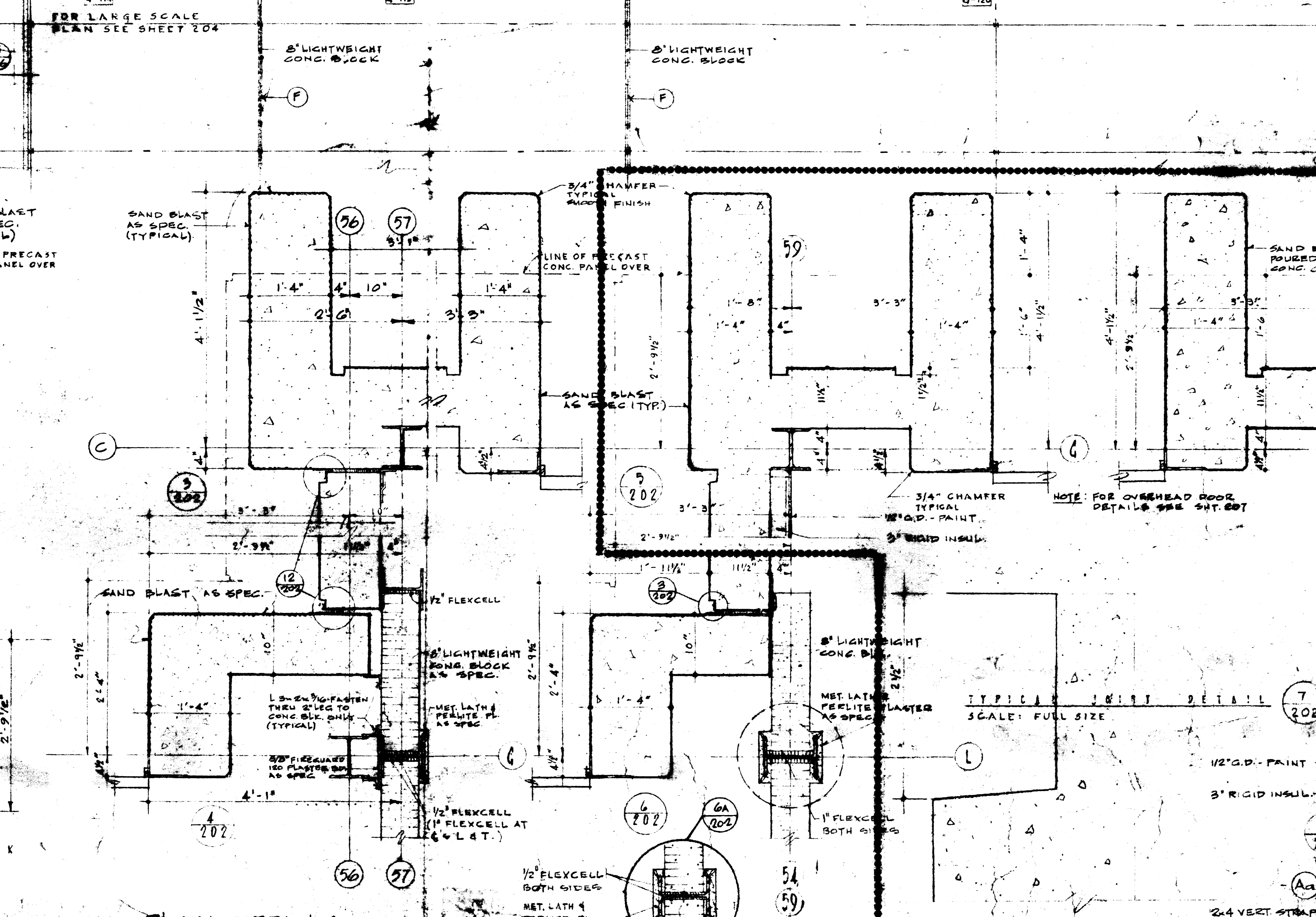
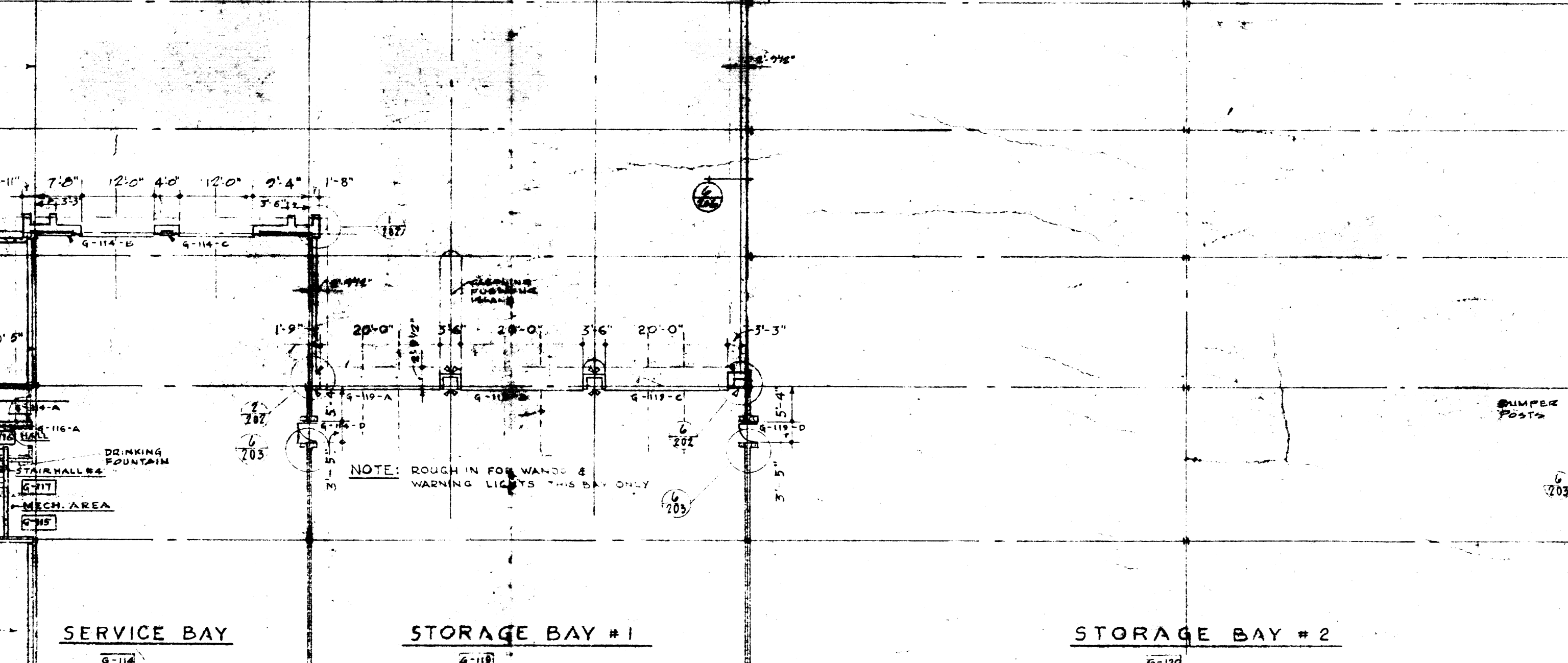
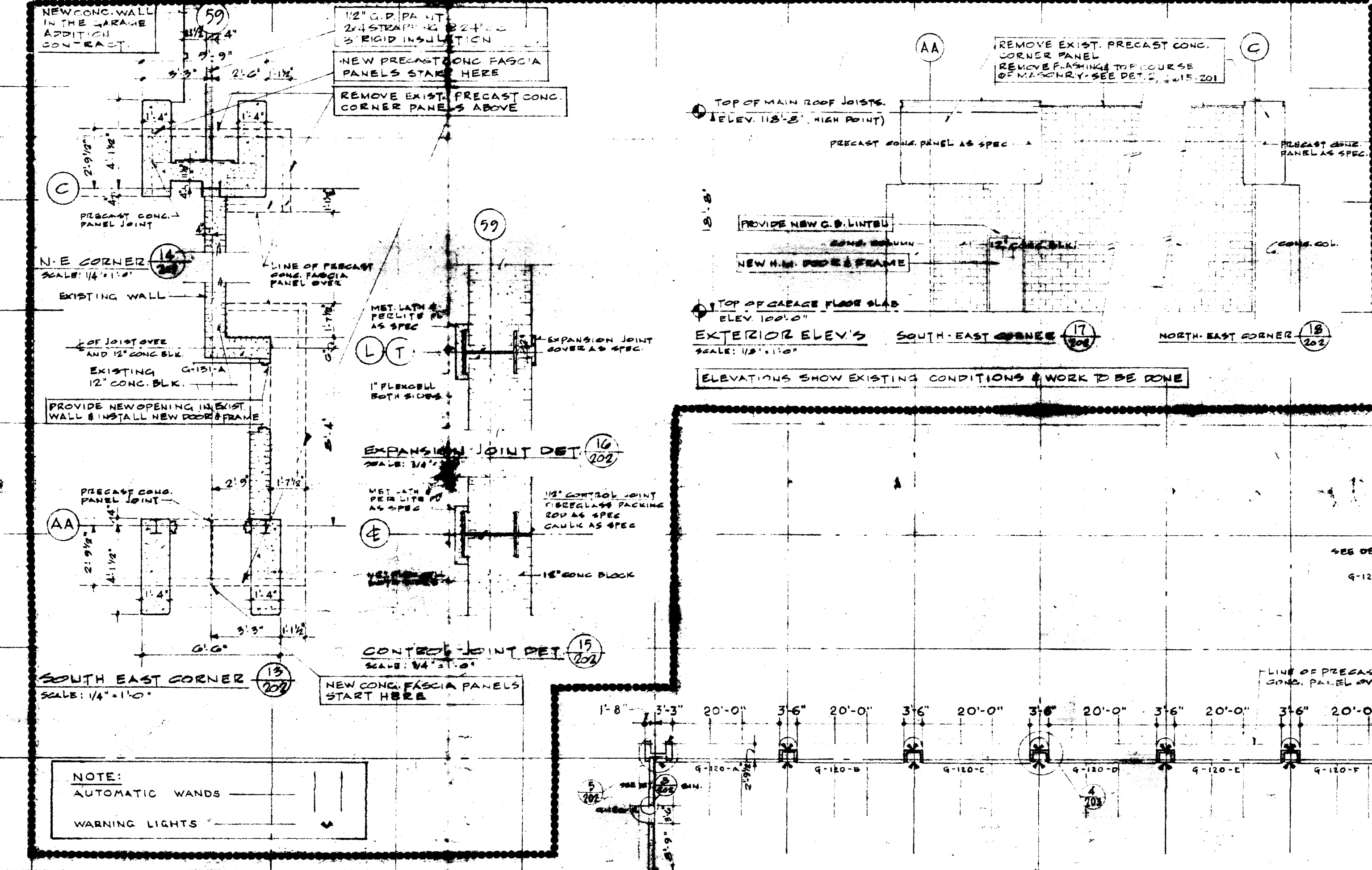


EXISTING BUILDING

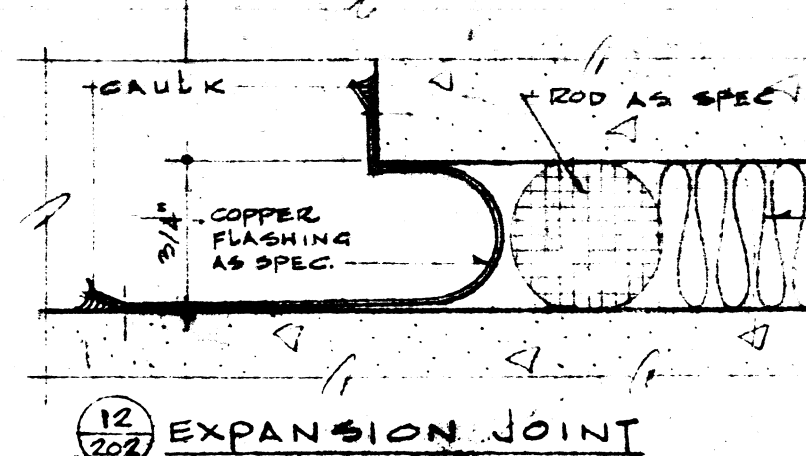
NEW ADDITION  
SEE SPECIFICATIONS



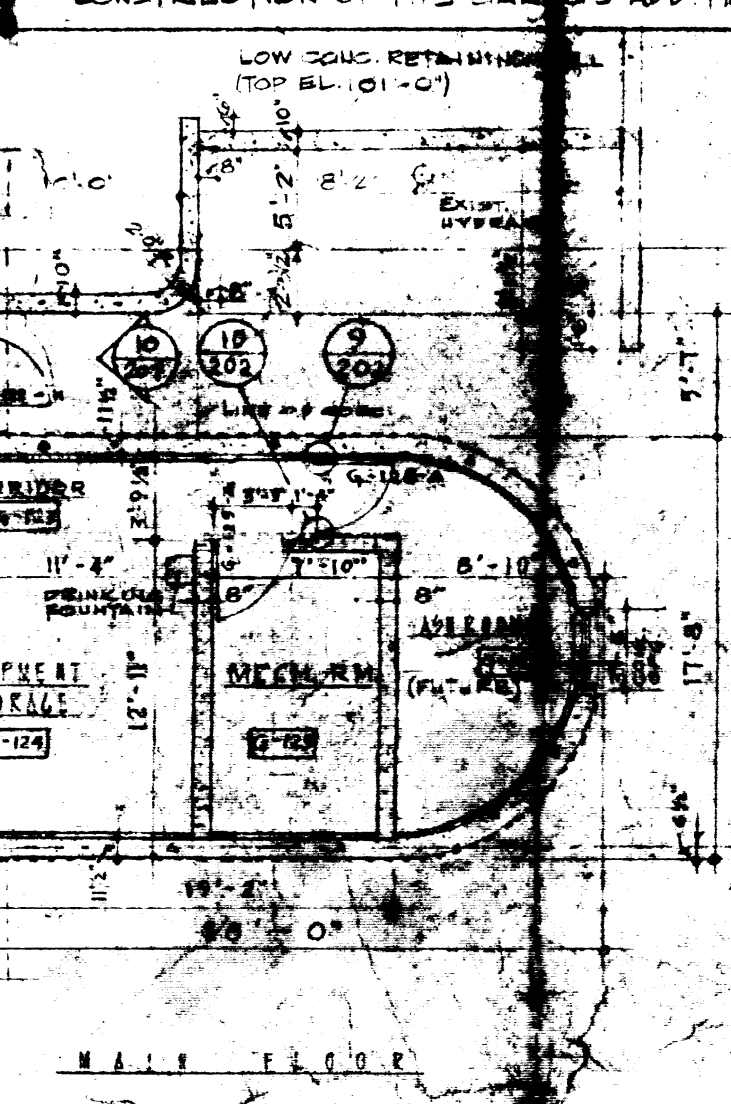
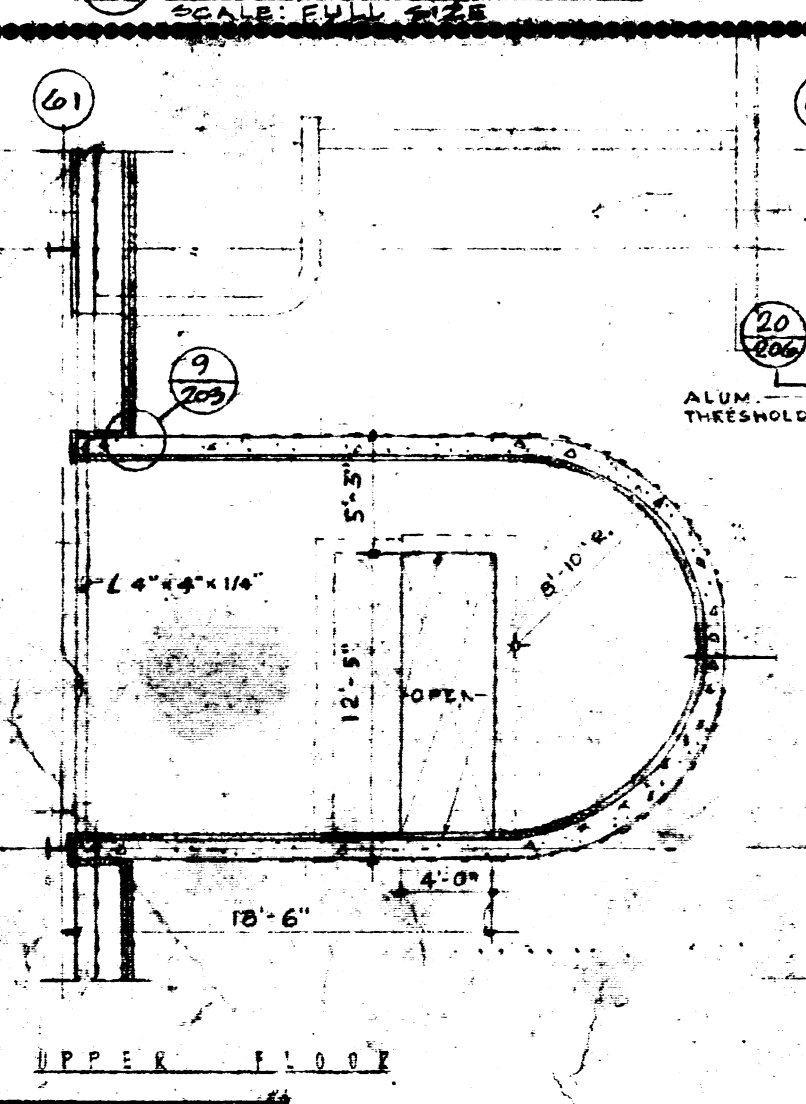
NOTE:  
①-② INDICATES 2HR FIRE SEPARATION

A. D. MORRISON ASSOCIATES LTD.  
CONSULTING PROFESSIONAL ENGINEERS  
SUITE 200-1880 YONGE STREET  
TORONTO, ONTARIO M4T 1K2

NUMBER TEN ARCHITECTURAL GROUP  
ARCHITECTS



NOTE:  
AREAS & DETAILS BOUNDED BY DOTTED LINE INDICATE THAT THEY ARE APPLICABLE TO THE CONSTRUCTION OF THE GARAGE ADDITION DATED 05.97



DATE	REV.	DESCRIPTION
05.97	1	AS BUILT
05.97	2	GARAGE ADDITION - FOR TENDER
05.97	3	FOR CONSTRUCTION
05.97	4	FOR TENDER
05.97	5	FOR APPROVAL

ISSUE OR REVISION	
METROPOLITAN CORPORATION OF GREATER WINNIPEG STREETS AND TRANSIT DIVISION	
TRANSIT STORAGE AND SHOP FACILITIES	
GARAGE & SERVICE BAY FLOOR PLAN & DETAILS	
CONSULTING PROFESSIONAL ENGINEERS A. D. MORRISON AND ASSOCIATES LIMITED 1155 LESLIE STREET, DON MILLS, ONTARIO	ARCHITECTS Walsman Ross + Blankstein Coop Gilman Harkin 30 SPADINA STREET, WINNIPEG, MANITOBA
APPROVED: [Signature]	DATE: [Date]
SCALE: 1/8"=1'-0"	SCALE: 1/8"=1'-0"