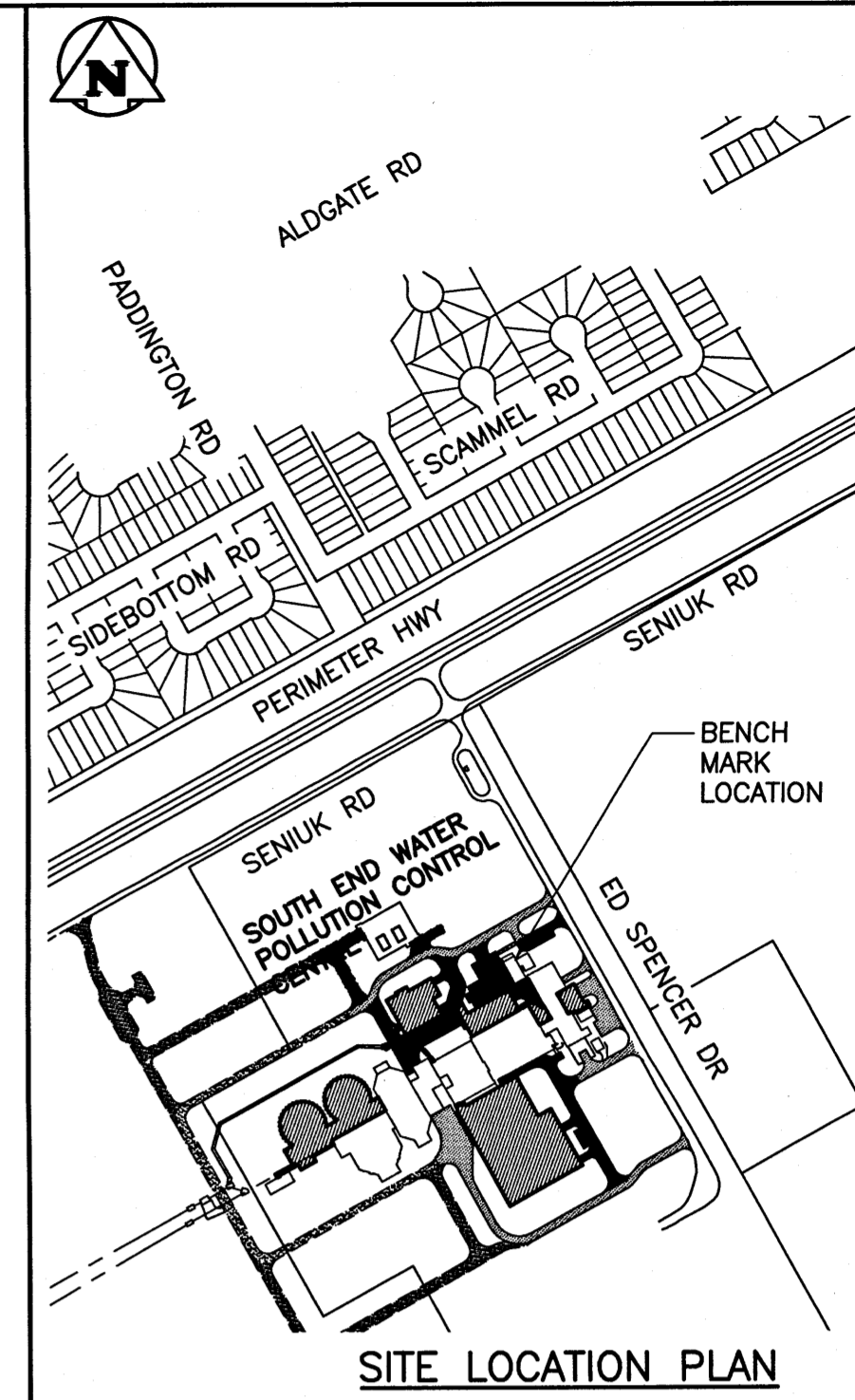
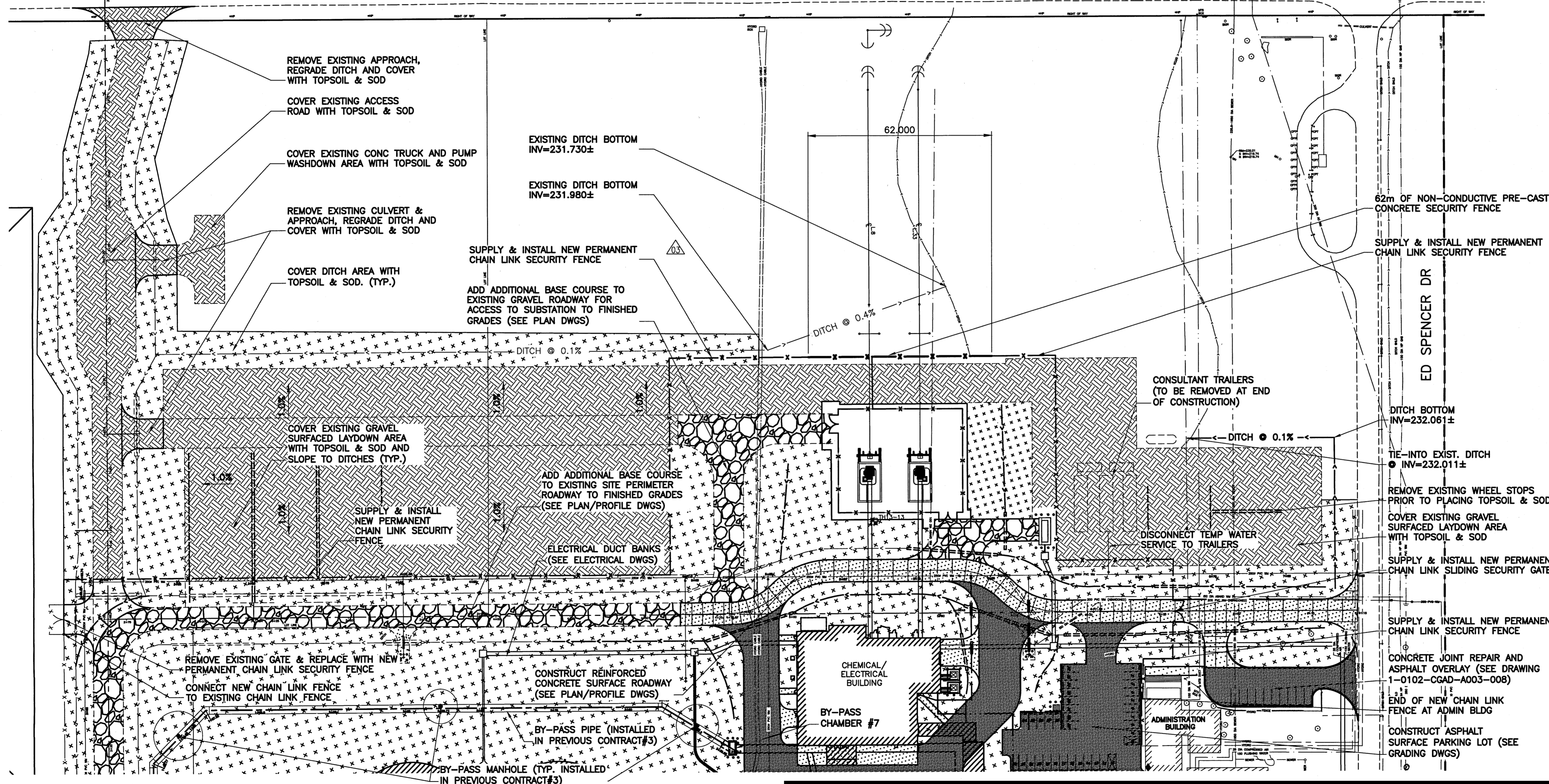


FROBISHER RD
PERIMETER 100 HWY

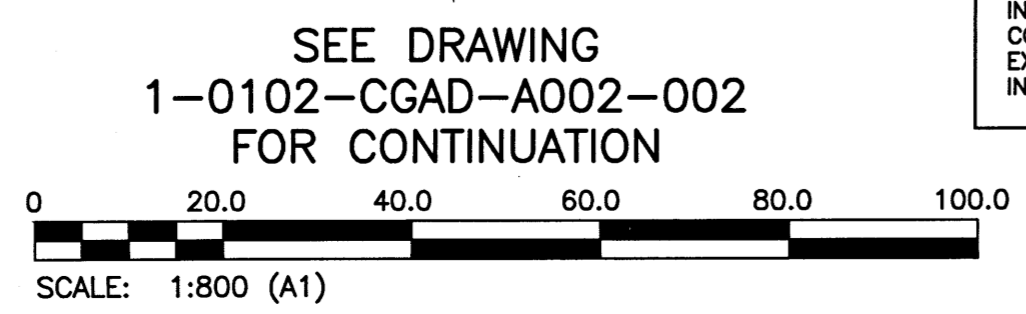
SENIUK RD



LEGEND	EXISTING	NEW
SEWER	—	—
SEWER MH	○	●
SEWER PLUG	—	—
SEWER CB	□	□
SEWER STRUCT	□	□
WM	—	—
WM VALVE	⊗	⊗
WM HYDRANT	⊕	⊕
GAS	—	—
HYDRO	—	—
HYDRO POLE	●HP	●HP
HYDRO STR	□	□
HYDRO POLE	●H	●H
STREET LIGHT	●	●
HYDRO TRANSFORMER	⊗	⊗
BOLLARD	⊙	⊙
TREE	○	○
SHRUBS/BUSH	○	○
CULVERT	—	—
DITCH	—	—
ROAD	—	—
FENCE	—	—
BUILDINGS	—	—
TOPSOIL AND SOD OVER EXISTING GRAVEL SURFACED AREA	—	—
TOPSOIL AND SOD OVER DITCHES AND LANDSCAPE AREAS	—	—
ASPHALT PAVEMENT	—	—
CONCRETE PAVEMENT	—	—
GRAVEL ROADWAY	—	—



- NOTES:**
- ALL WORK SHALL BE PERFORMED IN ACCORDANCE WITH THE CITY OF WINNIPEG STANDARD CONSTRUCTION SPECIFICATIONS.
 - DRAWING PREVIOUSLY ISSUED (REV 00 THROUGH REV 03) FOR TENDER AND CONSTRUCTION IN SEWPCC CONTRACT 1 - BID OPP 333-2014 FOR CONSTRUCTION OF PRELIMINARY SITE WORKS.
 - LATEST REVISION OF DRAWING BEING ISSUED FOR FINAL SITE SURFACE WORKS FOR SEWPCC CONTRACT 4.
 - CONTRACTOR SHALL, AS REQUIRED, PROVIDE ROUGH GRADING OF GRAVEL SURFACES TO DRAIN INTO SURROUNDING DITCHES PRIOR TO PLACEMENT OF TOPSOIL & SOD.



ITEMS SHOWN AS EXISTING AND MAY NOT ACTUALLY BE INFRASTRUCTURE. THE DESIGN INFRASTRUCTURE THAT IS SHOWN IS THE CONTRACTOR'S RESPONSIBILITY. THE CONTRACTOR IS RESPONSIBLE FOR VERIFYING THE EXISTING INFRASTRUCTURE THROUGH THE INSTALLATION OF NEW EQUIPMENT.

D-1 Site Plan North