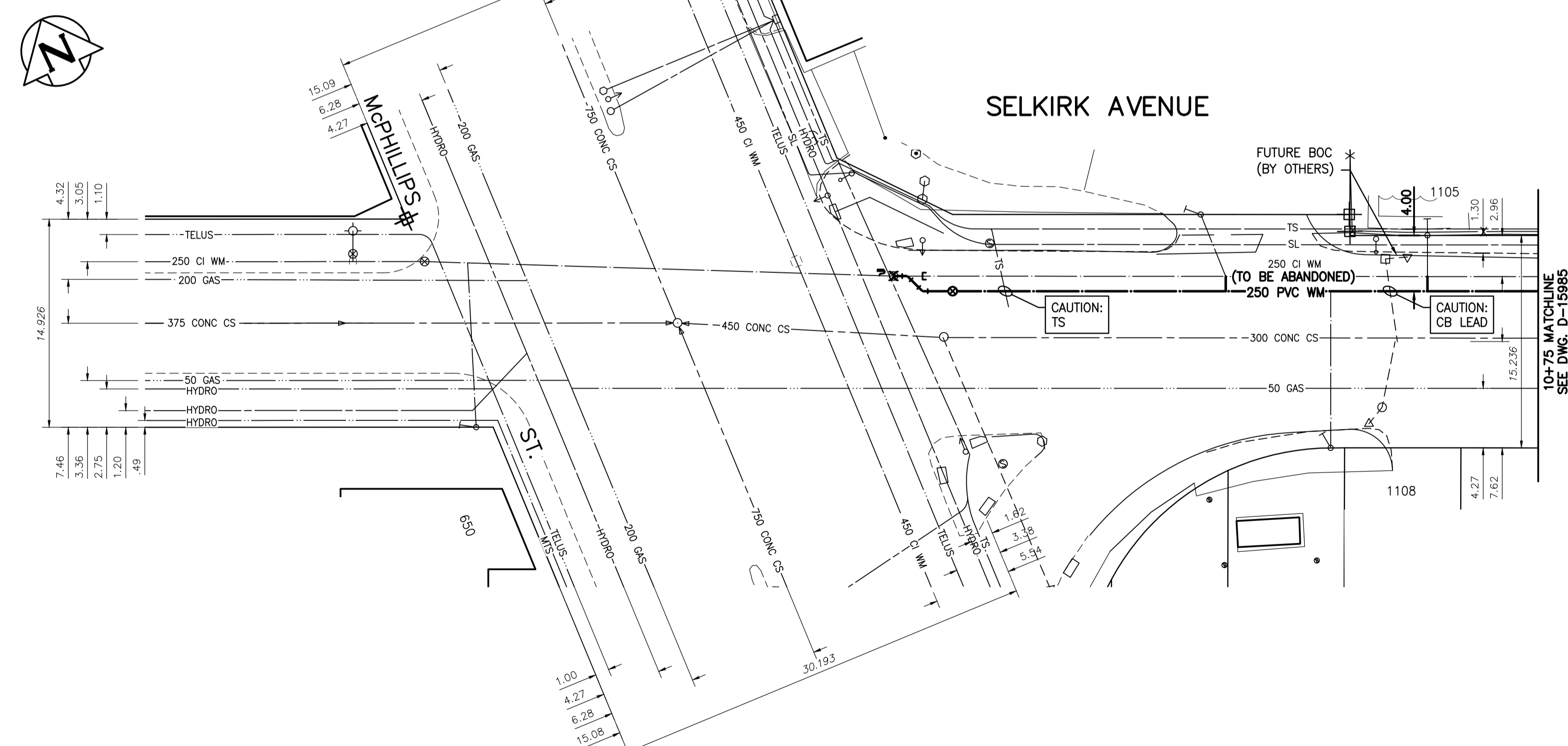


NOTE: CHAINAGES SHOWN ARE ALONG CENTRE LINE OF ROW



WATER SERVICE INFORMATION

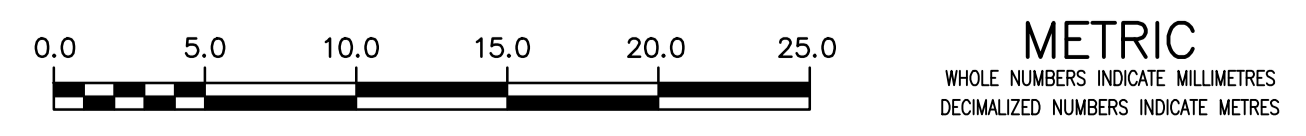
ADDRESS	PIPE SIZE & MATERIAL (STREET)	PIPE SIZE & MATERIAL (PROP.)	SHORT & LONG MEASUREMENT	CORP. LOCATION	REMARKS
1108 SELKIRK AVE	-	-	-	-	RECONNECT SERVICE
1105 SELKIRK AVE	20	20	5.18 EWL OF HOUSE	OPP S/C	RECONNECT SERVICE
665 MCPHILLIPS ST	25	-	3.05 EWL BLDG	0.3 E S/C	RECONNECT SERVICE
650 MCPHILLIPS ST	20	20	7.16 EWL OF BLDG	0.61 W CS	OUTSIDE LIMITS
RESIDENTIAL	LEAD	CU	1.22 WWL MCPHILLIPS ST		

* SERVICES TO BE RENEWED TO R

NOTE: VALVES TO BE INSTALLED COUNTER-CLOCKWISE TO CLOSE

FOR INDEX SEE D-15983

ENGINEERS GEOSCIENTISTS MANITOBA
 Certificate of Authorization
 Stantec Consulting Ltd.
 No. 1301



LOCATION APPROVED
 UNDERGROUND STRUCTURES

SUPV. U/G STRUCTURES COMMITTEE DATE

NOTE:
 LOCATION OF UNDERGROUND STRUCTURES AS SHOWN ARE BASED ON THE BEST INFORMATION AVAILABLE BUT NO GUARANTEE IS GIVEN THAT ALL EXISTING UTILITIES ARE SHOWN OR THAT THE GIVEN LOCATIONS ARE EXACT. CONFIRMATION OF EXISTENCE AND EXACT LOCATION OF ALL SERVICES MUST BE OBTAINED FROM THE INDIVIDUAL UTILITIES BEFORE PROCEEDING WITH CONSTRUCTION.

B.M. 25-11 ELEV. 232.212m	N.W. Cor. Arlington St. & Selkirk Ave., Tblt. in S. Conc. Foundation of King Edward Community School, 0.5 m W. & 0.1 m below Tysdal Stone of the most S. Ely. Cor. of School.		
03	ISSUED FOR TENDER	2021.04.09	RS
02	ISSUED FOR 66% REVIEW	2021.03.19	RS
01	ISSUED FOR 30% REVIEW	2021.03.05	RS
NO.	REVISIONS	DATE	BY

Stantec

DESIGNED BY: RS
 CHECKED BY: RS
 DRAWN BY: SC
 APPROVED BY: RS
 RELEASED FOR CONSTRUCTION
 DATE: 2019.01.15

SCALE:
 HORIZONTAL 1:250
 VERTICAL 1:50

PLOT DATE: 2021.04.09

ENGINEER'S SEAL

CONSULTANT DRAWING NUMBER
 C-201

TENDER NUMBER: 198-2021

THE CITY OF WINNIPEG
 WATER AND WASTE DEPARTMENT
 ENGINEERING DIVISION

2021 WATERMAIN RENEWALS
 CONTRACT 6
 SELKIRK AVENUE
 MCPHILLIPS STREET TO
 75 E OF MCPHILLIPS STREET

SHEET 03 OF 14
 CITY DRAWING NUMBER
 D-15984

FILE PATH: V:\1112\active\111220140\0300_drawing\0302_sheet_files\02_civil\