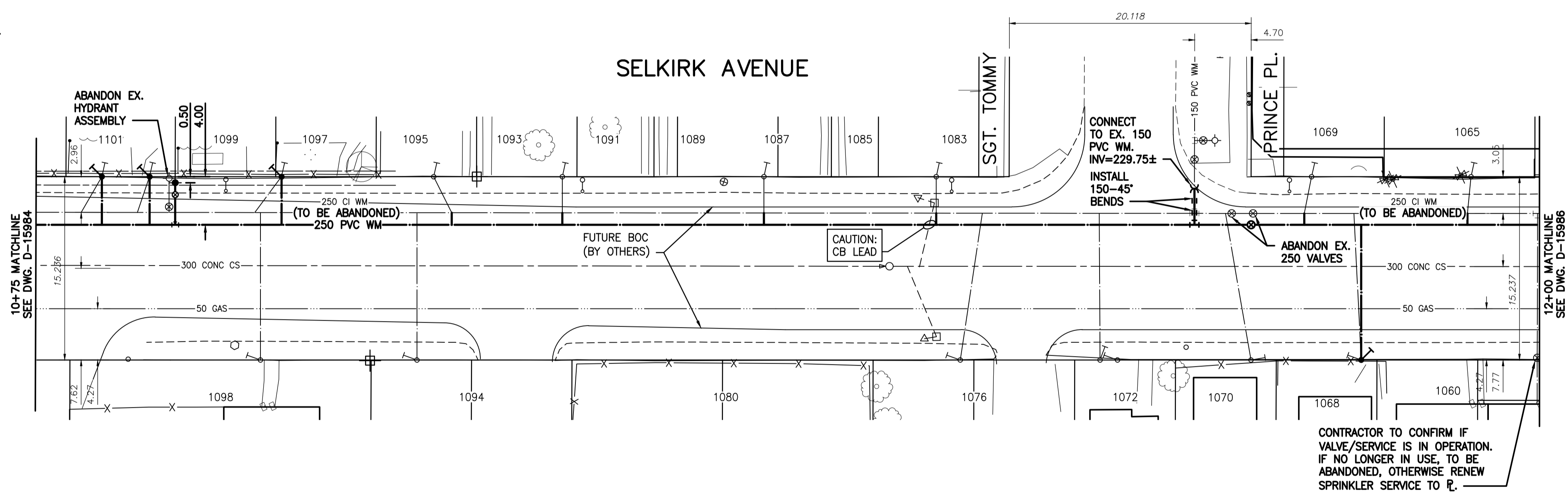


NOTE: CHAINAGES SHOWN ARE ALONG CENTRE LINE OF ROW



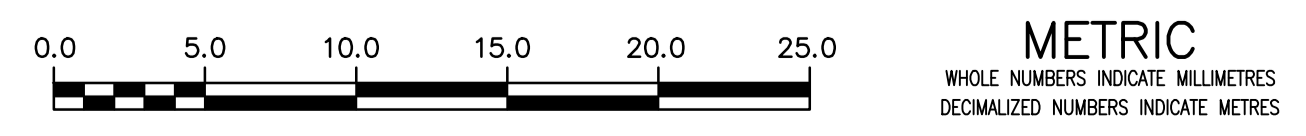
WATER SERVICE INFORMATION

ADDRESS	PIPE SIZE & MATERIAL (STREET)	PIPE SIZE & MATERIAL (PROP.)	SHORT & LONG MEASUREMENT	CORP. LOCATION	REMARKS
* 1101 SELKIRK AVE	12	12	1.83 WEL OF HOUSE	1.52 W OF S/C	RENEW SERVICE
RESIDENTIAL	LEAD	LEAD	55.78 EEL OF MCPHILLIPS		
* 1099 SELKIRK AVE	12	12	2.44 W/L OF HOUSE	0.91 W OF S/C	RENEW SERVICE
RESIDENTIAL	LEAD	LEAD	59.74 EEL OF MCPHILLIPS		
1098 SELKIRK AVE	20	20	2.13 EWL OF BLDG	OPP S/C	RECONNECT SERVICE
COMMERCIAL	CU	CU			
* 1097 SELKIRK AVE	12	12	OPP CENTRE OF W WINDOW	2.13 W OF S/C	RENEW SERVICE
RESIDENTIAL	LEAD	LEAD	70.71 EEL OF MCPHILLIPS		
1095 SELKIRK AVE	20	12	2.1 W/EBL	1.52 E OF S/C	RECONNECT SERVICE
RESIDENTIAL	CU	LEAD	3.4 W/ELL		
1094 SELKIRK AVE	25	-	2.29 WEL BLDG	OPP S/C	RECONNECT SERVICE
COMMERCIAL	-	-	49.26 W/L SGT TOMMY PRNC ST		
1091/1093 SELKIRK AVE	20	-	6.1 WEL OF HOUSE	OPP S/C	RECONNECT SERVICE
RESIDENTIAL	CU	-			
1087/1089 SELKIRK AVE	20	20	7.01 EWL OF HOUSE	OPP S/C	RECONNECT SERVICE
RESIDENTIAL	CU	CU			
1083/1085 SELKIRK AVE	20	20	6.4 EWL OF BUILDING	OPP S/C	RECONNECT SERVICE
RESIDENTIAL	CU	CU			
1076 SELKIRK AVE	20	12	4.57 EEL HOUSE	1.83 E S/C	RECONNECT SERVICE
RESIDENTIAL	CU	LEAD	118.57 EEL MCPHILLIPS ST		
1072 SELKIRK AVE	-	20	1.6 E/WL	-	RECONNECT SERVICE
RESIDENTIAL	-	CU			
1070 SELKIRK AVE	20	12	0.7 W E BL	2.1 W OF CS	RECONNECT SERVICE
RESIDENTIAL	CU	LEAD	2.1 W E LL		
1069 SELKIRK AVE	20	12	5.03 EWL HOUSE	0.61 W OF S/C	RECONNECT SERVICE
COMMERCIAL	CU	LEAD	5.03 EEL SGT TOMMY PRINCE ST		
* 1068 SELKIRK AVE	12	12	1.68 WEL OF HOUSE	0.61 W OF S/C	RENEW SERVICE
RESIDENTIAL	LEAD	LEAD	9.14 EEL SGT TOMMY PRINCE ST		
1065 SELKIRK AVE	20	20	6.4 EWL OF BLDG	0.3 W OF S/C	RECONNECT SERVICE
COMMERCIAL	CU	CU	18.29 EEL SGT TOMMY PRINCE ST		
1060 SELKIRK AVE	20	20	4 W/E BLDG	OPP S/C	RECONNECT SERVICE
COMMERCIAL	CU	CU	7 W/E LL		

* SERVICES TO BE RENEWED TO R

NOTE: VALVES TO BE INSTALLED COUNTER-CLOCKWISE TO CLOSE

FOR INDEX SEE D-15983



ENGINEERS GEOSCIENTISTS MANITOBA
 Certificate of Authorization
 Stantec Consulting Ltd.
 No. 1301

LOCATION APPROVED UNDERGROUND STRUCTURES
 SUPV. U/G STRUCTURES COMMITTEE DATE
 NOTE:
 LOCATION OF UNDERGROUND STRUCTURES AS SHOWN ARE BASED ON THE BEST INFORMATION AVAILABLE BUT NO GUARANTEE IS GIVEN THAT ALL EXISTING UTILITIES ARE SHOWN OR THAT THE GIVEN LOCATIONS ARE EXACT. CONFIRMATION OF EXISTENCE AND EXACT LOCATION OF ALL SERVICES MUST BE OBTAINED FROM THE INDIVIDUAL UTILITIES BEFORE PROCEEDING WITH CONSTRUCTION.

B.M. 25-11 ELEV. 232.212m	N.W. Cor. Arlington St. & Selkirk Ave., Tblt. in S. Conc. Foundation of King Edward Community School, 0.5 m W. & 0.1 m below Tysdall Stone of the most S. Ely. Cor. of School.		
03	ISSUED FOR TENDER	2021.04.09	RS
02	ISSUED FOR 66% REVIEW	2021.03.19	RS
01	ISSUED FOR 30% REVIEW	2021.03.05	RS
NO.	REVISIONS	DATE	BY

Stantec

DESIGNED BY	RS	CHECKED BY	RS
DRAWN BY	SC	APPROVED BY	RS
SCALE:	HORIZONTAL: 1:250 VERTICAL: 1:50		
DATE	2019.01.15		
PLOT DATE:	2021 04 09		

ENGINEER'S SEAL
 CONSULTANT DRAWING NUMBER
C-202
 TENDER NUMBER: 198-2021

THE CITY OF WINNIPEG
 WATER AND WASTE DEPARTMENT
 ENGINEERING DIVISION

2021 WATERMAIN RENEWALS
 CONTRACT 6
SELKIRK AVENUE
 75 E OF MCPHILLIPS STREET TO
 200 E OF MCPHILLIPS STREET

SHEET **04** OF **14**
 CITY DRAWING NUMBER
D-15985

FILE PATH: V:\112\active\11220140\0300_drawing\0302_sheet_files\02_civil\