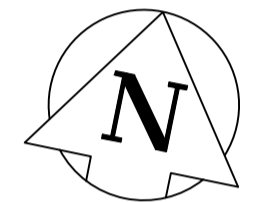
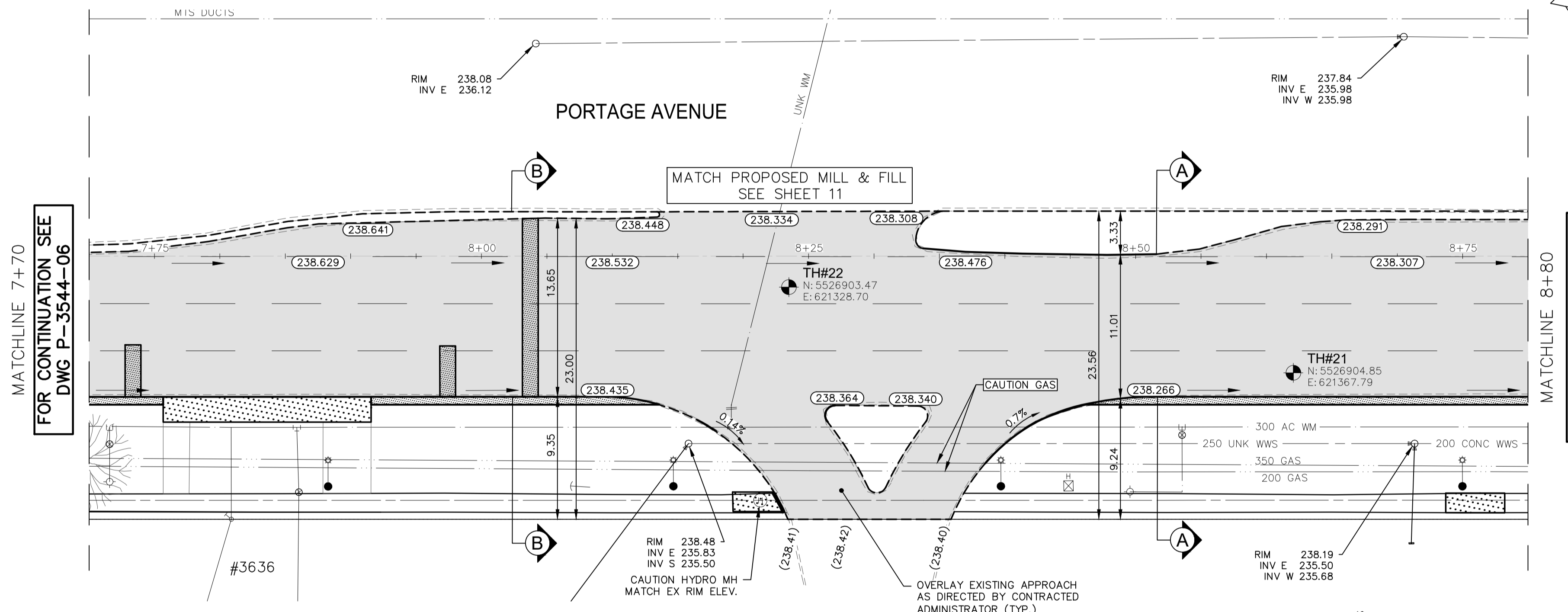
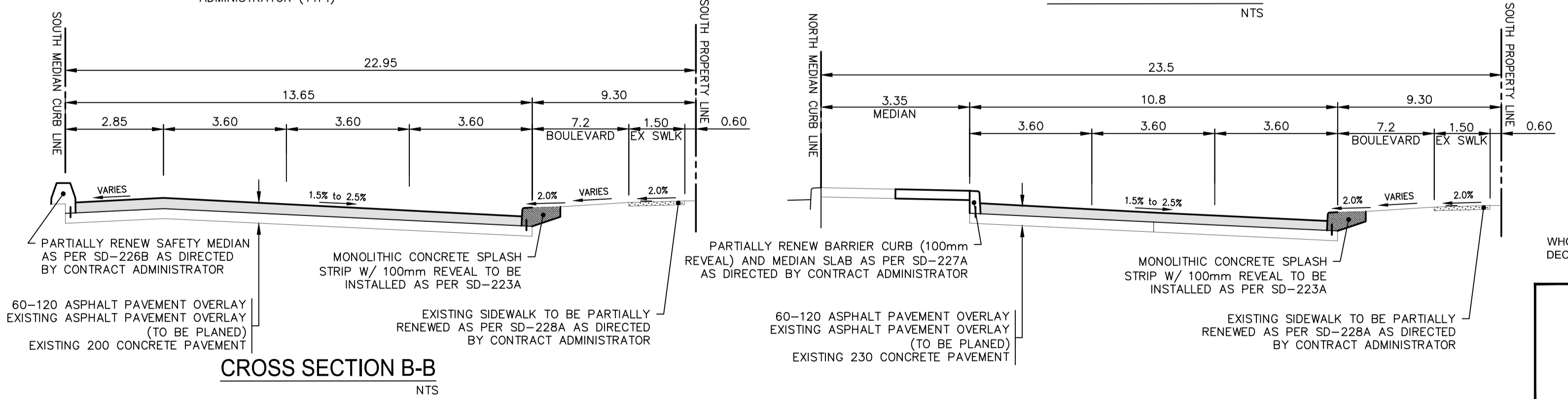


PORTAGE AVENUE EASTBOUND PROFILE

FOR TENDER PURPOSES ONLY
NOT FOR CONSTRUCTION



CROSS SECTION A-A
NTS



METRIC
WHOLE NUMBERS INDICATE MILLIMETRES
DECIMALIZED NUMBERS INDICATE METRES

**ENGINEERS
GEOSCIENTISTS
MANITOBA**
Certificate of Authorization
WSP Canada Inc.
No. 5750

- NOTES:
1. ALL WORK AND MATERIALS TO BE IN ACCORDANCE WITH THE LATEST REVISION OF THE CITY OF WINNIPEG STANDARD CONSTRUCTION SPECIFICATIONS.
 2. CONTRACTOR TO CONFIRM THE LOCATION OF ALL UTILITIES/SERVICES IN THE FIELD PRIOR TO CONSTRUCTION.
 3. ALL ROADWAY DIMENSIONS SHOWN ARE TO BACK OF CURB.
 4. EXISTING ASPHALT TO BE PLANED AS SHOWN OR AS DIRECTED BY CONTRACT ADMINISTRATOR.
 5. FULL-DEPTH PATCHING OF EXISTING 200mm PAVEMENT SLABS AND JOINTS SHOWN ARE ONLY A REPRESENTATIVE APPROXIMATION OF THE TENDERED QUANTITIES.
 6. FULL-DEPTH REPLACEMENT OF EXISTING PAVEMENT SLABS SHALL BE IN ACCORDANCE WITH CW 3230-R8.
 7. EXISTING SIDEWALK TO BE RENEWED AS PER SD-228A AND AS DIRECTED BY CONTRACT ADMINISTRATOR.
 8. EXISTING MEDIAN BARRIER AND SAFETY CURB TO BE RENEWED AS DIRECTED BY CONTRACT ADMINISTRATOR.
 9. MONOLITHIC CONCRETE SPLASH STRIP TO BE INSTALLED ALONG GUTTER LANE AS PER SD-223A.
 10. MODIFIED BARRIER CURB TO BE CONSTRUCTED AT INTERSECTION RADI AS DIRECTED BY CONTRACT ADMINISTRATOR.
 11. REGARDING EXISTING INTERLOCKING PAVING STONES BEHIND MEDIAN CURB AS DIRECTED BY CONTRACT ADMINISTRATOR.
 12. MISCELLANEOUS TRAFFIC SIGNALS POLE AND VEHICLE HEAD REPLACEMENT BY OTHERS AT ALL SIGNALIZED INTERSECTIONS.
 13. CONTRACTORS TO TAKE PRECAUTIONARY STEPS TO PROTECT EXISTING TREES WITHIN THE LIMITS OF CONSTRUCTION FROM DAMAGE FROM CONSTRUCTION ACTIVITIES AS OUTLINED IN THE SPECIFICATIONS.
 14. LAMP STANDARDS, HYDRO POLES, AND ANCHORS THAT REQUIRE TEMPORARY SUPPORT, REMOVAL OR REPLACEMENT, TO BE DONE SO AT THE EXPENSE OF THE CONTRACTOR AS NECESSARY.
 15. ALL BOULEVARDS TO BE SEEDS AS PER E13 UNLESS OTHERWISE NOTED.
 16. ADJUST ALL WATER VALVES, HYDRANTS, MANHOLES, AND CATCH BASINS IN WORK AREA TO GRADE.

EXISTING	LEGEND-PLAN	PROPOSED	EXISTING	LEGEND-PLAN	PROPOSED	EXISTING	LEGEND-PROFILE	PROPOSED
---	WATER MAIN	---	---	IRON BAR	---	---		
---	LAND DRAINAGE SEWER	---	---	HYDRO POLE & LIGHT STANDARD	---	---		
---	WASTE WATER SEWER	---	---	LIGHT STANDARD OR TRAFFIC SIGNAL	---	---		
---	HYDRO	---	---	HYDRO POLE	---	---		
---	BELL/MTS	---	---	CURB RAMP	---	---		
---	GAS	---	---	DETECTABLE WARNING SURFACE TILE	---	---		
---	SIGNALS	---	---	EDGE OF SIDEWALK	---	---		
---	MANHOLE	---	---	FENCE	---	---		
---	CATCH BASIN	---	---	PROPERTY LINE	---	---		
---	CURB INLET	---	---	EDGE OF ASPHALT	---	---		
---	UTILITIES ADJUSTED	---	---	EDGE OF CONCRETE	---	---		
---	PLUG	---	---	MODIFIED BARRIER CURB	---	---		
---	HYDRANT	---	---	BARRIER CURB	---	---		
---	VALVE	---	---	MONOLITHIC CONCRETE SPLASH STRIP	---	---		
---	CURB STOP	---	---	CONC SIDEWALK	---	---		
---	GROUND GRADE	---	---	CONCRETE SLAB	---	---		
---	PAVEMENT GRADE	---	---	ASPHALT	---	---		
---	ANCHOR	---	---	MILLED SURFACE	---	---		
---	CIVIC ADDRESS	---	---	PAVEMENT REPAIR FABRIC	---	---		
---	EXISTING	---	---	LEGEND-PLAN	---	---		

LOCATIONS APPROVED UNDERGROUND STRUCTURES

SIGNED BY: _____ DATE: _____

SUPP UG STRUCTURES

LOCATION OF UNDERGROUND STRUCTURES AS SHOWN ARE BASED ON THE BEST INFORMATION AVAILABLE BUT NO GUARANTEE IS GIVEN THAT ALL EXISTING UTILITIES ARE SHOWN OR THAT THE GIVEN LOCATIONS ARE EXACT CONFIRMATION OF EXISTENCE AND EXACT LOCATION OF ALL SERVICES MUST BE OBTAINED FROM THE INDIVIDUAL UTILITIES BEFORE PROCEEDING

NO.	REVISIONS	DATE	BY

G.M. ELEV. 240.322

TOP OF FIRST HYDRANT WEST OF ST CHARLES STREET IN SOUTH BOULEVARD

wsp

DESIGNED BY: AG CHECKED BY: KG

DRAWN BY: AG APPROVED BY: VM

WSP Canada Inc.
Suite 111 - 93 Lombard Ave
Winnipeg, MB R3B 3B1
t. 204.943.3178
f. 204.943.4948
www.wsp.com

WORK SCALE: 1:250
VERTICAL: 1:10

RELEASED FOR CONSTRUCTION

CONSULTANT ACAD DWG. NO. 211-00206-00-07

THE CITY OF WINNIPEG
PUBLIC WORKS DEPARTMENT
ENGINEERING SERVICES DIVISION

2021 PORTAGE AVENUE PAVEMENT RENEWALS
EASTBOUND PORTAGE AVENUE
PAVEMENT REHABILITATION
STA. 7+70 TO STA. 8+80

CITY DRAWING NUMBER: P-3544-07
SHEET: 07 OF 11
TENDER NO.: 217-2021

Apr 21, 2021 - 12:39pm
P:\2021\211-00206-00 - 2021 Portage Ave Pavement Renewals\4.0 Tech & Professional Services\4.01 Transportation Engineering\04 Drawings\04 Working Drawings\211-00206-00_Portage Ave_Rehab_Plan&Profile.dwg - tab:217-2021_Drawing_P-3544-07-RA