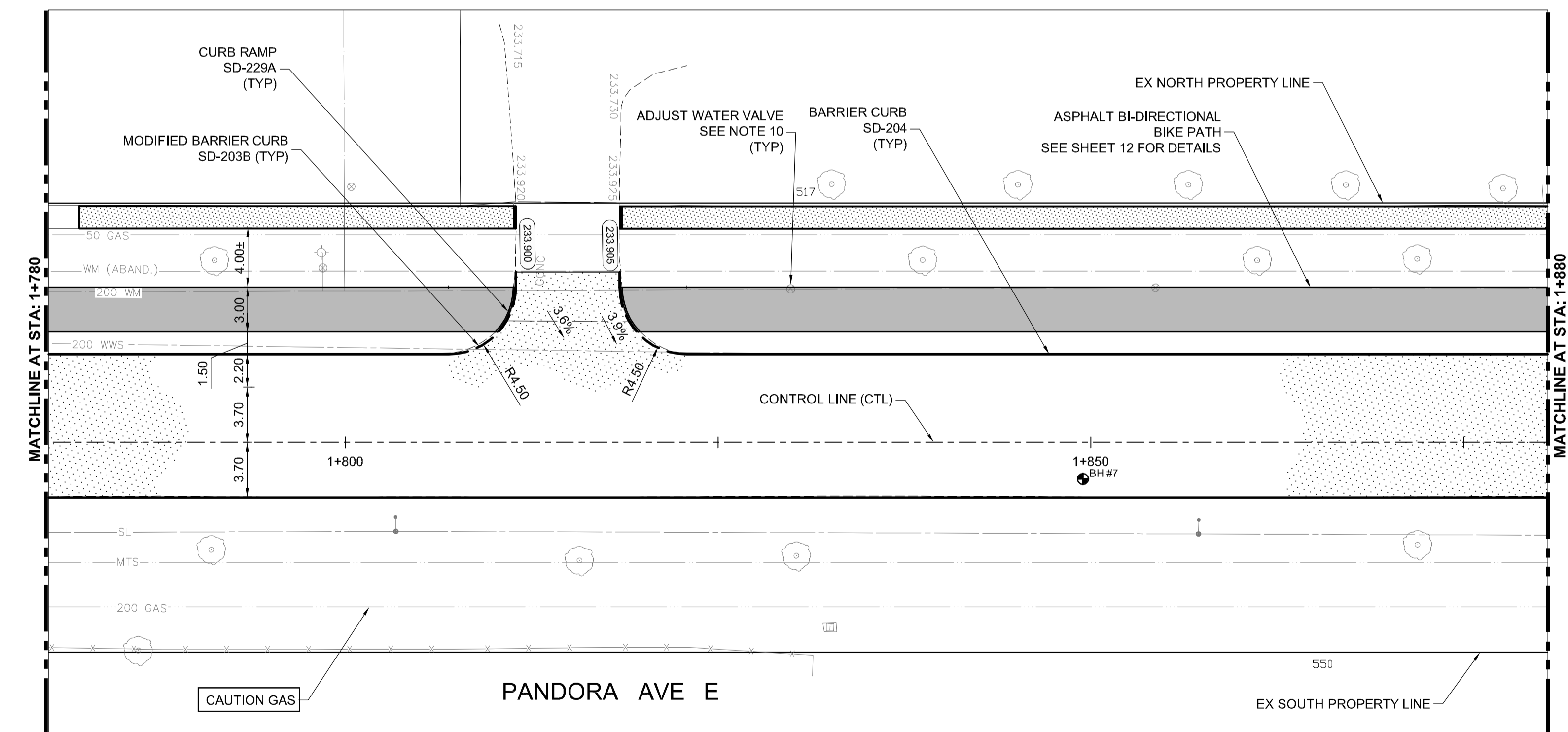


- CONSTRUCTION NOTES:**
- ALL WORK AND MATERIALS IN ACCORDANCE WITH LATEST REVISION OF THE CITY OF WINNIPEG STANDARD CONSTRUCTION SPECIFICATIONS.
 - ALL DIMENSIONS ARE TO BACK OF CURB.
 - ISOLATE MISCELLANEOUS ITEMS IN NEW CONCRETE WORKS AS PER SD-228C.
 - LEGAL PLAN AND UNDERGROUND INFORMATION FROM CITY OF WINNIPEG L.B.S. CONTRACTOR TO VERIFY ALL UNDERGROUNDS IN THE FIELD.
 - CONTRACTOR TO TAKE PRECAUTIONARY STEPS TO AVOID DAMAGE FROM CONSTRUCTION ACTIVITIES TO TREES WITHIN THE LIMITS OF CONSTRUCTION.
 - LOCATION OF EXISTING SERVICES TO BE CONFIRMED IN THE FIELD BY THE CONTRACTOR.
 - CB LEADS TO BE INSTALLED AT MIN. 1.0% SLOPE OR AS DIRECTED BY CONTRACT ADMINISTRATOR.
 - LIMITS OF CURB AND SIDEWALK RENEWAL TO BE FINALIZED IN THE FIELD BY THE CONTRACT ADMINISTRATOR.
 - LIMITS OF BOULEVARD GRADING TO BE FINALIZED IN THE FIELD BY THE CONTRACT ADMINISTRATOR.
 - ADJUST ALL WATER VALVES, MANHOLES, CATCH BASINS, CATCH PITS, AND WATER SERVICE SHUT OFF VALVES TO GRADE.
 - ALL PRIVATE WALKWAYS ADJUSTED TO NEW SIDEWALK OR TOP OF CURB ELEVATION, AS REQUIRED.
 - MODIFIED BARRIER CURB TO BE CONSTRUCTED AT ALL INTERSECTION RADI AND BACK LANE RADI.
 - LAMP STANDARDS, HYDRO POLES AND ANCHORS THAT REQUIRE TEMPORARY SUPPORT, REMOVAL OR REPLACEMENT, ARE TO BE DONE AT THE EXPENSE OF THE CONTRACTOR, AS NECESSARY.
 - SEE SHEET 12 FOR TYPICAL PANDORA AVE. SECTION.

ENGINEERS GEOSCIENTISTS MANITOBA
 Certificate of Authorization
Dillon Consulting Limited (MB)
 No. 1789 Date: 2021/03/11



- ABBREVIATIONS:**
- | | |
|----------|-------------------------|
| CONC | CONCRETE ROADWAY |
| ASP | ASPHALT ROADWAY |
| ASP OVLY | ASPHALT OVERLAY ROADWAY |
| GRAN | GRANULAR ROADWAY |
| PVS | PAVING STONE/BRICK |
| CSW | CONCRETE SIDEWALK |
| ASW | ASPHALT SIDEWALK |
| GSW | GRANULAR SIDEWALK |
| TYP | TYPICAL SIDEWALK |
| EX | EXISTING |
| MH | MANHOLE |
| WV | WATER VALVE |
| EL | ELEVATION |
| CB | CATCH BASIN |
| CP | CATCH PIT |
| CI | CURB INLET |
| CL | CONTROL LINE |

METRIC
 WHOLE NUMBERS INDICATE MILLIMETRES
 DECIMALIZED NUMBERS INDICATE METRES

- WARNING**
- IF POWER EQUIPMENT OR EXPLOSIVES ARE TO BE USED FOR EXCAVATION ON THIS PROJECT THE CONTRACTOR MUST:
- NOTIFY THE GAS COMPANY OF THE PROPOSED LOCATION OF EXCAVATION.
 - TAKE PRECAUTION TO AVOID DAMAGE TO GAS COMPANY INSTALLATIONS SEE PROVINCIAL REGULATION 210/72 FOR DETAILS.
 - OBTAIN EXCAVATION PERMITS PRIOR TO CONSTRUCTION.

	HYDRANT			CONCRETE			WATERMAIN
	VALVE			ASPHALT			LAND DRAINAGE SEWER
	MANHOLE			SIDEWALK			WASTE WATER SEWER
	CATCH BASIN			PAVING STONES			HYDRANT
	CATCH PIT			PAVEMENT REPAIR FABRIC			VALVE
	WATERMAIN			PROPERTY LINE			PROFILE
	LAND DRAINAGE SEWER			ELEVATION			NORTH/WEST GUTTER
	WASTE WATER SEWER			TRAFFIC SIGNAL			SOUTH/EAST GUTTER
	HYDRO			SURVEY BAR			NORTH/WEST DITCH
	M.T.S.			CURB RAMP			SOUTH/EAST DITCH
	GAS			DETECTABLE TILE			
	EXISTING			LEGEND-PLAN			LEGEND-PROFILE
	PROPOSED			LEGEND-PLAN			LEGEND-PROFILE

UNDERGROUND STRUCTURES
 APPROVED BY UGS 2021/03/11
 SUPV. U/G STRUCTURES DATE

LOCATION OF UNDERGROUND STRUCTURES AS SHOWN ARE BASED ON THE BEST INFORMATION AVAILABLE BUT NO GUARANTEE IS GIVEN THAT ALL EXISTING UTILITIES ARE SHOWN OR THAT THE GIVEN LOCATIONS ARE EXACT. CONFIRMATION OF EXISTENCE AND EXACT LOCATION OF ALL SERVICES MUST BE OBTAINED FROM THE INDIVIDUAL UTILITIES BEFORE PROCEEDING WITH CONSTRUCTION.

B.M. ELEV.				
DESIGNED BY	MRF			
DRAWN BY	PMW			
CHECKED BY	KP			
APPROVED BY	TJP			
HOR. SCALE	1:250			
VERTICAL	1:10			
1	ISSUED FOR TENDER	21/03/11	TJP	
NO.	REVISIONS	DATE	BY	DATE

RELEASED FOR CONSTRUCTION	DATE
---------------------------	------

DILLON CONSULTING

ENGINEER'S SEAL
 PROVINCE OF MANITOBA
 REGISTERED PROFESSIONAL ENGINEER
 T.J. PETERS
 2021/03/11
 Member 22309

THE CITY OF WINNIPEG PUBLIC WORKS DEPARTMENT

2021 DAY/PANDORA PAVEMENT RENEWAL PROJECT
 PANDORA CONCRETE RECONSTRUCTION
 DAY STREET TO WAYOATA STREET

PANDORA AVE. EAST PLAN PROFILE
 (STA: 1+780 TO 1+880)

CITY DRAWING NUMBER P-3540-2021-10
 SHEET 10 OF 14
 CONSULTANT DRAWING NUMBER