

- CONSTRUCTION NOTES:**
- ALL WORK AND MATERIALS IN ACCORDANCE WITH LATEST REVISION OF THE CITY OF WINNIPEG STANDARD CONSTRUCTION SPECIFICATIONS.
 - ALL DIMENSIONS ARE TO BACK OF CURB.
 - ISOLATE MISCELLANEOUS ITEMS IN NEW CONCRETE WORKS AS PER SD-228C.
 - LEGAL PLAN AND UNDERGROUND INFORMATION FROM CITY OF WINNIPEG LBS. CONTRACTOR TO VERIFY ALL UNDERGROUNDS IN THE FIELD.
 - CONTRACTOR TO TAKE PRECAUTIONARY STEPS TO AVOID DAMAGE FROM CONSTRUCTION ACTIVITIES TO TREES WITHIN THE LIMITS OF CONSTRUCTION.
 - LOCATION OF EXISTING SERVICES TO BE CONFIRMED IN THE FIELD BY THE CONTRACTOR.
 - CB LEADS TO BE INSTALLED AT MIN. 1.0% SLOPE OR AS DIRECTED BY CONTRACT ADMINISTRATOR.
 - LIMITS OF CURB AND SIDEWALK RENEWAL TO BE FINALIZED IN THE FIELD BY THE CONTRACT ADMINISTRATOR.
 - LIMITS OF BOULEVARD GRADING TO BE FINALIZED IN THE FIELD BY THE CONTRACT ADMINISTRATOR.
 - ADJUST ALL WATER VALVES, MANHOLES, CATCH BASINS, CATCH PITS, AND WATER SERVICE SHUT OFF VALVES TO GRADE.
 - ALL PRIVATE WALKWAYS ADJUSTED TO NEW SIDEWALK OR TOP OF CURB ELEVATION, AS REQUIRED.
 - MODIFIED BARRIER CURB TO BE CONSTRUCTED AT ALL INTERSECTION RADII AND BACK LANE RADII.
 - LAMP STANDARDS, HYDRO POLES AND ANCHORS THAT REQUIRE TEMPORARY SUPPORT, REMOVAL OR REPLACEMENT, ARE TO BE DONE AT THE EXPENSE OF THE CONTRACTOR, AS NECESSARY.
 - SEE SHEET 12 FOR TYPICAL PANDORA AVE. SECTION.

ENGINEERS GEOSCIENTISTS MANITOBA
 Certificate of Authorization
Dillon Consulting Limited (MB)
 No. 1789 Date: 2021/03/11

ABBREVIATIONS:

CONC	CONCRETE ROADWAY
ASP	ASPHALT ROADWAY
ASP OVLY	ASPHALT OVERLAY ROADWAY
GRAN	GRANULAR ROADWAY
PVS	PAVING STONE/BRICK
CSW	CONCRETE SIDEWALK
ASW	ASPHALT SIDEWALK
CSW	GRANULAR SIDEWALK
TYP	TYPICAL
EX	EXISTING
MH	MANHOLE
WV	WATER VALVE
EL	ELEVATION
CB	CATCH BASIN
CP	CATCH PIT
CI	CURB INLET
CL	CONTROL LINE

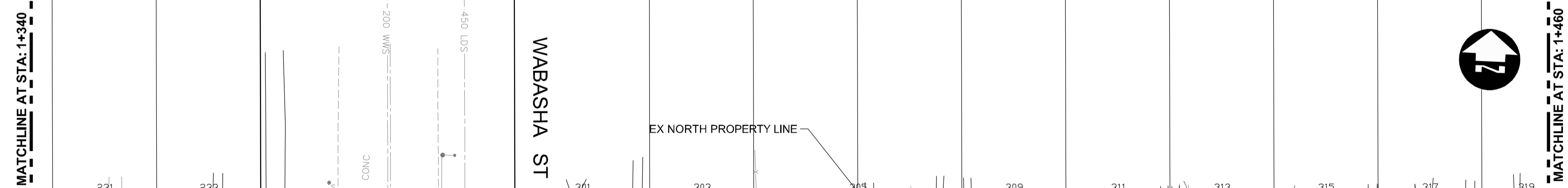
METRIC

WHOLE NUMBERS INDICATE MILLIMETRES
 DECIMALIZED NUMBERS INDICATE METRES

WARNING

IF POWER EQUIPMENT OR EXPLOSIVES ARE TO BE USED FOR EXCAVATION ON THIS PROJECT THE CONTRACTOR MUST:

- NOTIFY THE GAS COMPANY OF THE PROPOSED LOCATION OF EXCAVATION.
- TAKE PRECAUTION TO AVOID DAMAGE TO GAS COMPANY INSTALLATIONS SEE PROVINCIAL REGULATION 210/72 FOR DETAILS.
- OBTAIN EXCAVATION PERMITS PRIOR TO CONSTRUCTION.



p:\Projects\2021\Projects\20210314_Pavement_Renew_Day\Pandora\eg\eg\eg\12_Work\Drawings\Roadworks\Contract\

HYDRANT	CONCRETE	WATERMAIN	150 WM
VALVE	ASPHALT	LAND DRAINAGE SEWER	300 LDS
MANHOLE	SIDEWALK	WASTE WATER SEWER	250 WWS
CATCH BASIN	PAVING STONES	HYDRANT	+
CATCH PIT	PAVEMENT REPAIR FABRIC	VALVE	X
150 WM	PROPERTY LINE	Ø PROFILE	---
300 LDS	ELEVATION	NORTH/WEST GUTTER	---
250 WWS	TRAFFIC SIGNAL	SOUTH/EAST GUTTER	---
HYDRO	SURVEY BAR	NORTH/WEST DITCH	---
M.T.S.	CURB RAMP	SOUTH/EAST DITCH	---
100 GAS	DETECTABLE TILE		
EXISTING	LEGEND-PLAN	PROPOSED	LEGEND-PROFILE

UNDERGROUND STRUCTURES

APPROVED BY UGS 2021/03/11
 SUPV. U/G STRUCTURES DATE

LOCATION OF UNDERGROUND STRUCTURES AS SHOWN ARE BASED ON THE BEST INFORMATION AVAILABLE, BUT NO GUARANTEE IS GIVEN THAT ALL EXISTING UTILITIES ARE SHOWN OR THAT THE GIVEN LOCATIONS ARE EXACT. CONFIRMATION OF EXISTENCE AND EXACT LOCATION OF ALL SERVICES MUST BE OBTAINED FROM THE INDIVIDUAL UTILITIES BEFORE PROCEEDING WITH CONSTRUCTION.

B.M. ELEV.			
DESIGNED BY	MRF		
DRAWN BY	PMW		
CHECKED BY	KP		
APPROVED BY	TJP		
HOR. SCALE	1:250		
VERTICAL	1:50		
1	ISSUED FOR TENDER	21/03/11	TJP
NO.	REVISIONS	DATE	BY

DILLON CONSULTING

DESIGNED BY: MRF
 DRAWN BY: PMW
 CHECKED BY: KP
 APPROVED BY: TJP

HOR. SCALE: 1:250
 VERTICAL: 1:50

RELEASED FOR CONSTRUCTION

DATE

ENGINEER'S SEAL

PROVINCE OF MANITOBA
 REGISTERED PROFESSIONAL ENGINEER
 T.J. PETERS
 2021/03/11
 Member 22309

CONSULTANT PROJECT NUMBER
20-2914

THE CITY OF WINNIPEG
 PUBLIC WORKS DEPARTMENT

2021 DAY/PANDORA PAVEMENT RENEWAL PROJECT
 PANDORA CONCRETE RECONSTRUCTION
 DAY STREET TO WAYOATA STREET

CITY DRAWING NUMBER
 P-3540-2021-13

SHEET 13 OF 14

CONSULTANT DRAWING NUMBER

450 DIA. LDS EXTENSION