

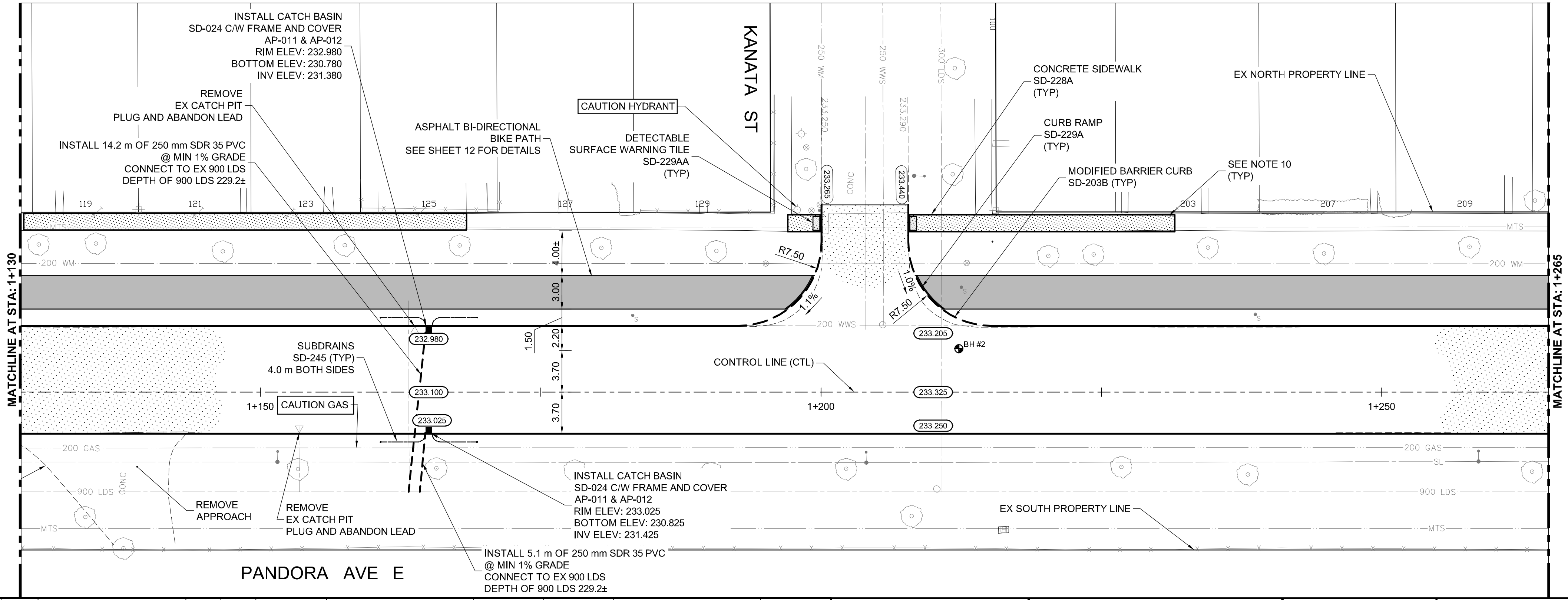
- CONSTRUCTION NOTES:**
- ALL WORK AND MATERIALS IN ACCORDANCE WITH LATEST REVISION OF THE CITY OF WINNIPEG STANDARD CONSTRUCTION SPECIFICATIONS.
 - ALL DIMENSIONS ARE TO BACK OF CURB.
 - ISOLATE MISCELLANEOUS ITEMS IN NEW CONCRETE WORKS AS PER SD-228C.
 - LEGAL PLAN AND UNDERGROUND INFORMATION FROM CITY OF WINNIPEG LBIS. CONTRACTOR TO VERIFY ALL UNDERGROUNDS IN THE FIELD.
 - CONTRACTOR TO TAKE PRECAUTIONARY STEPS TO AVOID DAMAGE FROM CONSTRUCTION ACTIVITIES TO TREES WITHIN THE LIMITS OF CONSTRUCTION.
 - LOCATION OF EXISTING SERVICES TO BE CONFIRMED IN THE FIELD BY THE CONTRACTOR.
 - CB LEADS TO BE INSTALLED AT MIN. 1.0% SLOPE OR AS DIRECTED BY CONTRACT ADMINISTRATOR.
 - LIMITS OF CURB AND SIDEWALK RENEWAL TO BE FINALIZED IN THE FIELD BY THE CONTRACT ADMINISTRATOR.
 - LIMITS OF BOULEVARD GRADING TO BE FINALIZED IN THE FIELD BY THE CONTRACT ADMINISTRATOR.
 - ADJUST ALL WATER VALVES, MANHOLES, CATCH BASINS, CATCH PITS, AND WATER SERVICE SHUT OFF VALVES TO GRADE.
 - ALL PRIVATE WALKWAYS ADJUSTED TO NEW SIDEWALK OR TOP OF CURB ELEVATION, AS REQUIRED.
 - MODIFIED BARRIER CURB TO BE CONSTRUCTED AT ALL INTERSECTION RADII AND BACK LANE RADII.
 - LAMP STANDARDS, HYDRO POLES AND ANCHORS THAT REQUIRE TEMPORARY SUPPORT, REMOVAL OR REPLACEMENT, ARE TO BE DONE AT THE EXPENSE OF THE CONTRACTOR, AS NECESSARY.
 - SEE SHEET 12 FOR TYPICAL PANDORA AVE. SECTION.

ENGINEERS GEOSCIENTISTS MANITOBA
 Certificate of Authorization
Dillon Consulting Limited (MB)
 No. 1789 Date: 2021/03/11

- ABBREVIATIONS:**
- | | |
|----------|-------------------------|
| CONC | CONCRETE ROADWAY |
| ASP | ASPHALT ROADWAY |
| ASP OVLY | ASPHALT OVERLAY ROADWAY |
| GRAN | GRANULAR ROADWAY |
| PVS | PAVING STONE/BRICK |
| CSW | CONCRETE SIDEWALK |
| ASW | ASPHALT SIDEWALK |
| GSW | GRANULAR SIDEWALK |
| TYP | TYPICAL SIDEWALK |
| EX | EXISTING |
| MH | MANHOLE |
| WV | WATER VALVE |
| EL | ELEVATION |
| CB | CATCH BASIN |
| CP | CATCH PIT |
| CI | CURB INLET |
| CL | CONTROL LINE |

METRIC
 WHOLE NUMBERS INDICATE MILLIMETRES
 DECIMALIZED NUMBERS INDICATE METRES

- WARNING**
- IF POWER EQUIPMENT OR EXPLOSIVES ARE TO BE USED FOR EXCAVATION ON THIS PROJECT THE CONTRACTOR MUST:
- NOTIFY THE GAS COMPANY OF THE PROPOSED LOCATION OF EXCAVATION.
 - TAKE PRECAUTION TO AVOID DAMAGE TO GAS COMPANY INSTALLATIONS SEE PROVINCIAL REGULATION 210/72 FOR DETAILS.
 - OBTAIN EXCAVATION PERMITS PRIOR TO CONSTRUCTION.



p:\Projects\dillon.ca\Projects_2020\Documents\Projects\2021\14_Pavement_Renewal_Day/Pandora/Pandora\Drawings\Roadworks\Contract\

150 WM	WATERMAIN	150 WM	CONCRETE	150 WM	WATERMAIN
300 LDS	LAND DRAINAGE SEWER	300 LDS	ASPHALT	300 LDS	LAND DRAINAGE SEWER
250 WWS	WASTE WATER SEWER	250 WWS	SIDEWALK	250 WWS	WASTE WATER SEWER
HYDRO	HYDRO	HYDRO	PAVING STONES	+	HYDRANT
MTS	M.T.S.	MTS	PAVEMENT REPAIR FABRIC	X	VALVE
100 GAS	GAS	100 GAS	PROPERTY LINE	- - -	PROPERTY LINE
EXISTING	LEGEND-PLAN	PROPOSED	ELEVATION	(232.000)	NORTH/WEST GUTTER
			TRAFFIC SIGNAL	+	SOUTH/EAST GUTTER
			SURVEY BAR	+	NORTH/WEST DITCH
			CURB RAMP	+	SOUTH/EAST DITCH
			DETECTABLE TILE	+	
			EXISTING		
			PROPOSED		
			EXISTING		
			PROPOSED		

UNDERGROUND STRUCTURES

APPROVED BY UGS 2021/03/11
 SUPV. U/G STRUCTURES DATE

LOCATION OF UNDERGROUND STRUCTURES AS SHOWN ARE BASED ON THE BEST INFORMATION AVAILABLE, BUT NO GUARANTEE IS GIVEN THAT ALL EXISTING UTILITIES ARE SHOWN OR THAT THE GIVEN LOCATIONS ARE EXACT. CONFIRMATION OF EXISTENCE AND EXACT LOCATION OF ALL SERVICES MUST BE OBTAINED FROM THE INDIVIDUAL UTILITIES BEFORE PROCEEDING WITH CONSTRUCTION.

B.M. ELEV.	
DESIGNED BY	MRF
DRAWN BY	PMW
CHECKED BY	KP
APPROVED BY	TJP
HOR. SCALE	1:250
VERTICAL	1:10
1	ISSUED FOR TENDER
NO.	REVISIONS
	DATE
	BY
	DATE

DILLON CONSULTING

ENGINEER'S SEAL
 PROVINCE OF MANITOBA
 REGISTERED PROFESSIONAL ENGINEER
T.J. PETERS
 2021/03/11
 Member 22309

THE CITY OF WINNIPEG
 PUBLIC WORKS DEPARTMENT

2021 DAY/PANDORA PAVEMENT RENEWAL PROJECT
 PANDORA CONCRETE RECONSTRUCTION
 DAY STREET TO WAYOATA STREET

PANDORA AVE. EAST PLAN PROFILE
 (STA: 1+130 TO 1+265)

CITY DRAWING NUMBER P-3540-2021-05
 SHEET 05 OF 14
 CONSULTANT DRAWING NUMBER

RELEASSED FOR CONSTRUCTION
 DATE

CONSULTANT PROJECT NUMBER
 20-2914