

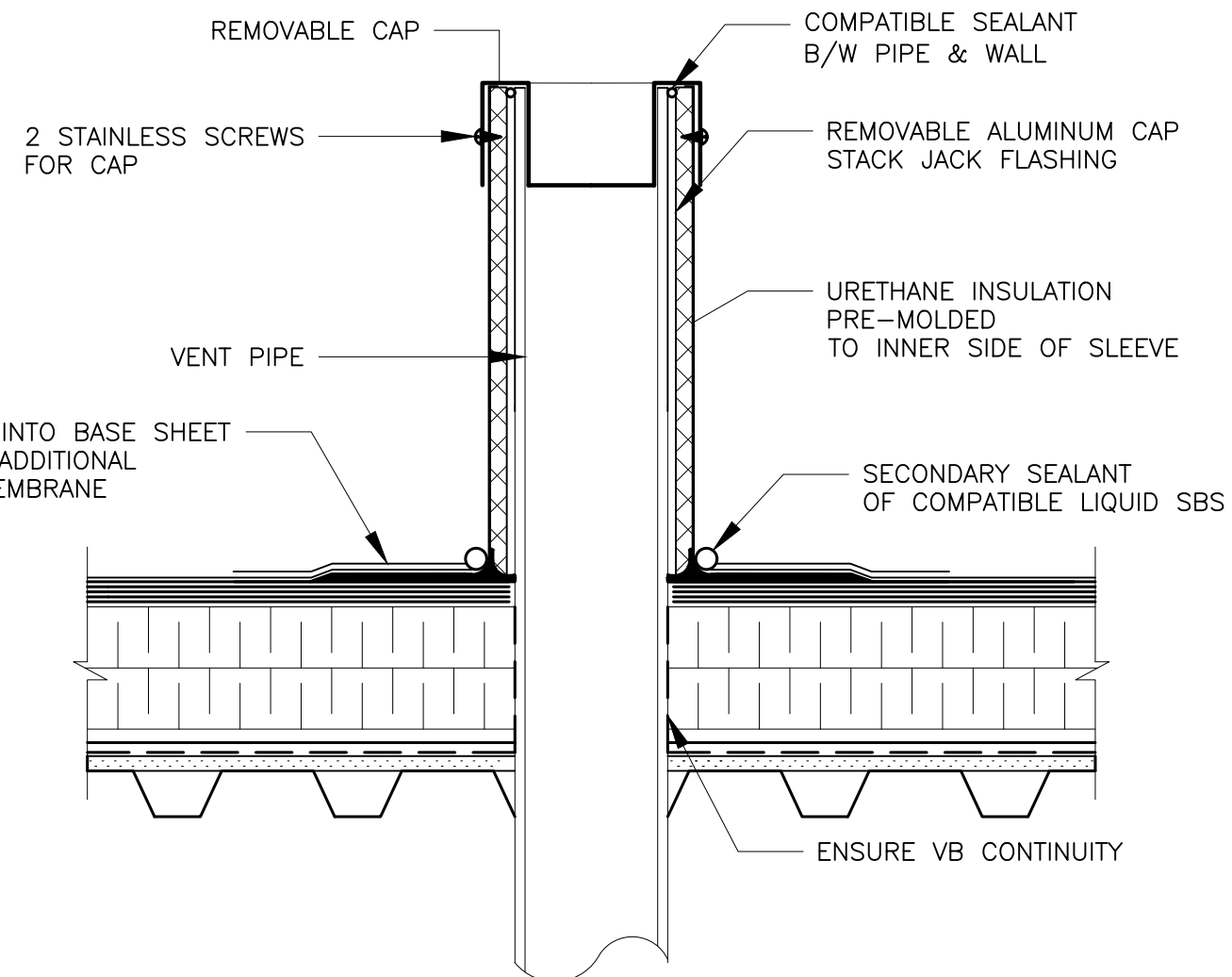
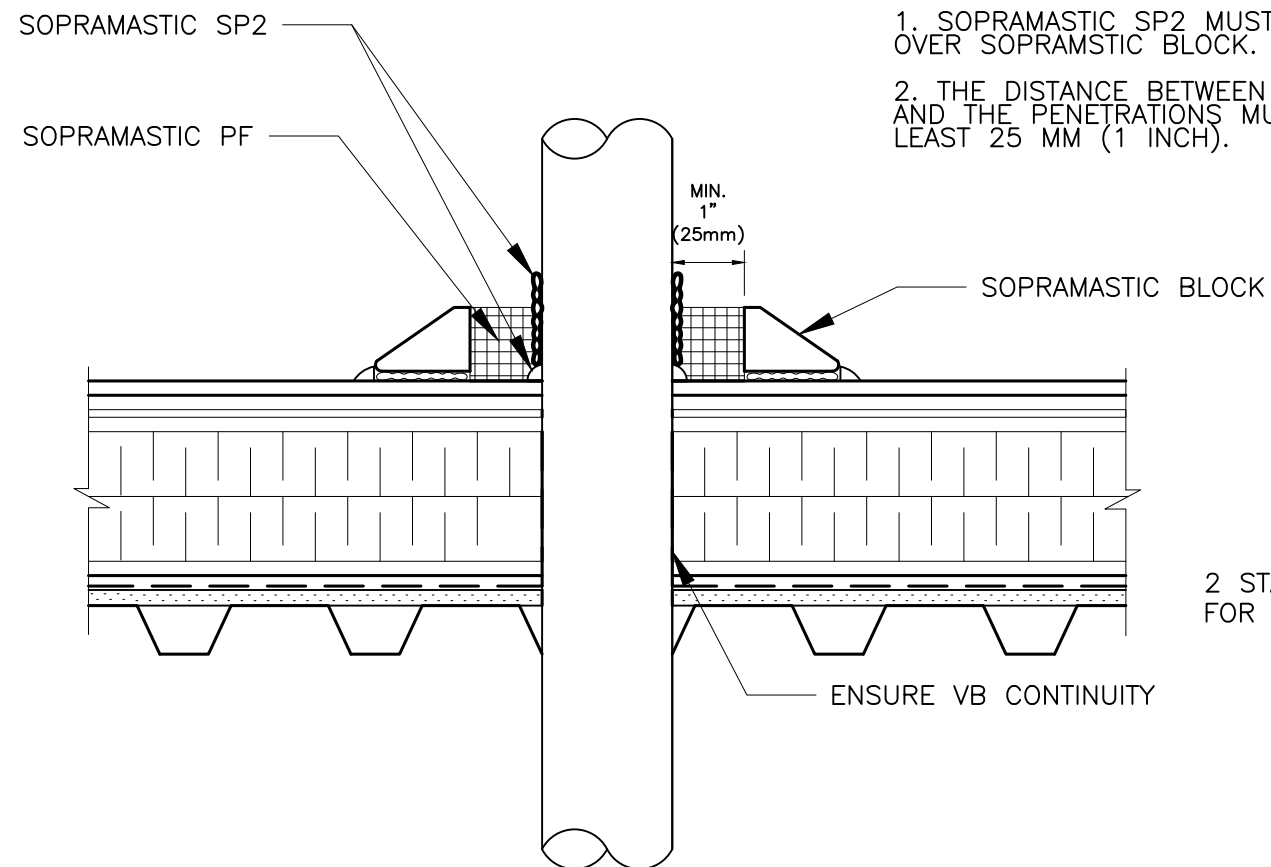


QCA BUILDING ENVELOPE LIMITED
 P.O. BOX 23119 RPO
 MCGILLVARY BLVD, WINNIPEG, MB
 CITY OF WINNIPEG
 WINNIPEG, MANITOBA

KEYNOTE LEGEND:

NOTES:

1. SOPRAMASTIC SP2 MUST EXCEED 25 MM (1 INCH) OVER SOPRAMASTIC BLOCK.
2. THE DISTANCE BETWEEN THE BLOCK INNER WALL AND THE PENETRATIONS MUST HAVE AT LEAST 25 MM (1 INCH).



1 PITCH BOX
 A4 SCALE: NTS

2 ISOMETRIC DRAIN SUMP
 A4 SCALE: NTS

THIS DRAWING MUST NOT BE SCALED. THE CONTRACTOR SHALL VERIFY ALL DIMENSIONS AND OTHER SITE CONDITIONS ON SITE PRIOR TO THE COMMENCEMENT OF WORK. DISCREPANCIES, ERRORS, OR OMISSIONS ARE TO BE REPORTED TO QCA BUILDING ENVELOPE LIMITED PRIOR TO PROCEEDING WITH WORK.

PROJECT NAME:		PARTIAL ROOF REPLACEMENT AT FORT ROUGE LEISURE CENTRE	
ADDRESS:		625 OSBORNE STREET, WINNIPEG, MB	
DRAWING:		305-2021_DRAWING_DETAILS_A4-R0	
DATE:	2021 03 12	DRAWN BY:	BH
PROJECT NUMBER:	305-2021	REVISION:	R0
SCALE:	AS NOTED	SHEET NO.:	A4