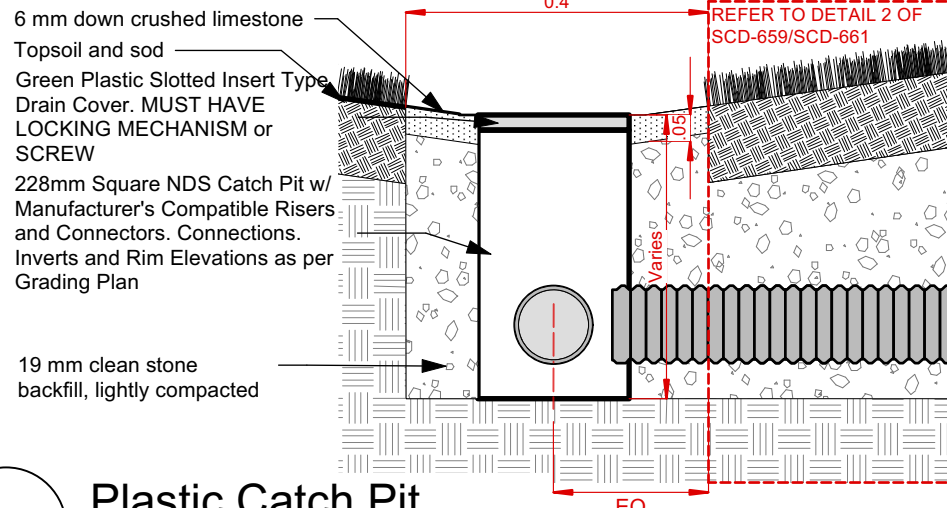
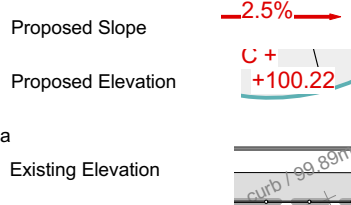
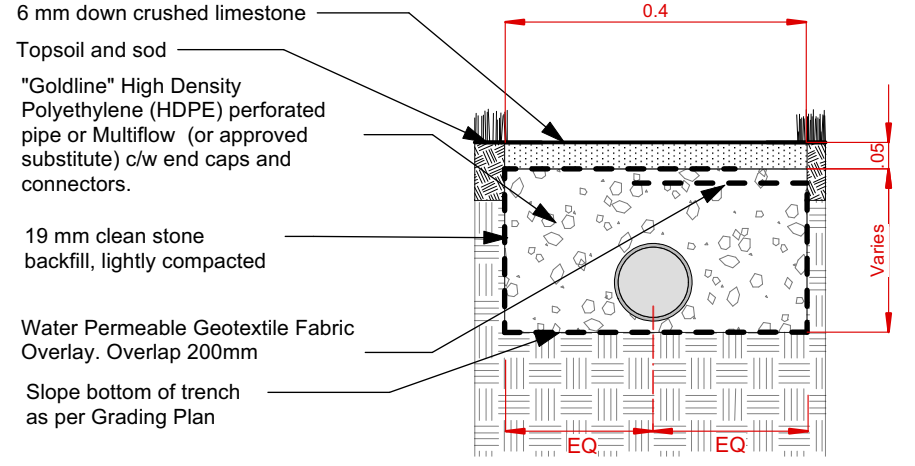


LEGEND

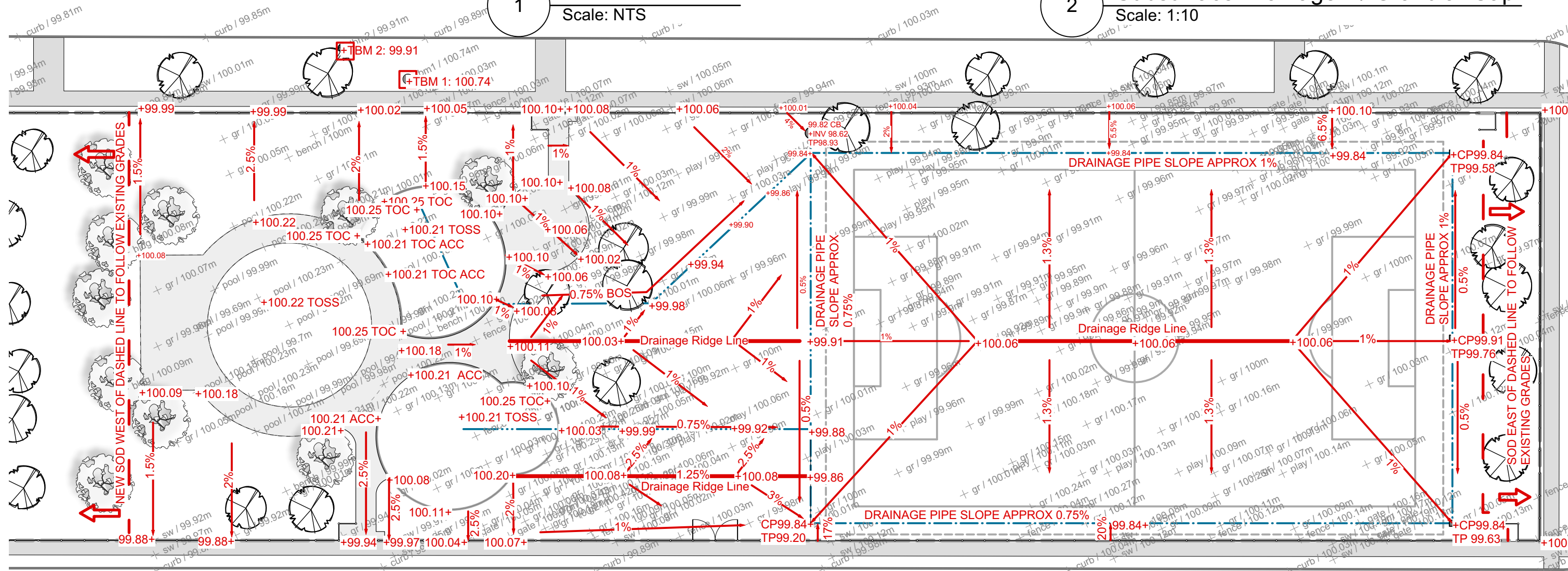
- TOC: Top of Curb
- TOC ACC: Top of Curb at Accessible Entry to Play Area
- TOSS: Top of Safety Surface
- CP: Catch Pit
- TP: Top of Drainage Pipe
- INV: Invert
- CB: Existing Catch Basin
- TBM: Benchmark Elevation
- BOS: Bottom of Swale
- ACC: Accessible Entry to Play Area
- Max. pathway slope 5%
- Max. crossfall 2%



1 Plastic Catch Pit
Scale: NTS



2 Subsurface Drainage w/ Granular Cap
Scale: 1:10



CONTRACTOR TO CONFIRM ALL DIMENSIONS AND REPORT ANY DISCREPANCIES TO CONTRACT ADMINISTRATOR PRIOR TO CONSTRUCTION. LOCATION OF UNDERGROUND STRUCTURES AS SHOWN ARE BASED ON THE BEST INFORMATION AVAILABLE BUT NO GUARANTEE IS GIVEN THAT ALL EXISTING UTILITIES ARE SHOWN OR THAT THE GIVEN LOCATIONS ARE EXACT. CONFIRMATION OF EXISTENCE AND EXACT LOCATION OF ALL SERVICES MUST BE OBTAINED FROM THE INDIVIDUAL UTILITIES BEFORE PROCEEDING WITH CONSTRUCTION.

<p>THE CITY OF WINNIPEG Planning, Property and Development Department Planning and Land Use Division Unit 15 - 30 Fort Street, Winnipeg, MB, (R3C 4X5)</p>	DESIGNED BY	CHECKED BY	MANAGER, PARK AND OPEN SPACES	DATE	DRAWING TITLE Clara Hughes Park Playground Redevelopment Grading Plan	DRAWING NO. C.21- 3	
	DRAWN BY IM	APPROVED BY					MANAGER, PLANNING AND LAND USE DIVISION
	HORIZ. SCALE 1:350						
	VERT. SCALE DATE	March 2021					
SITE ADDRESS 400 Matheson Avenue BID OPPORTUNITY NO. 310-2021							