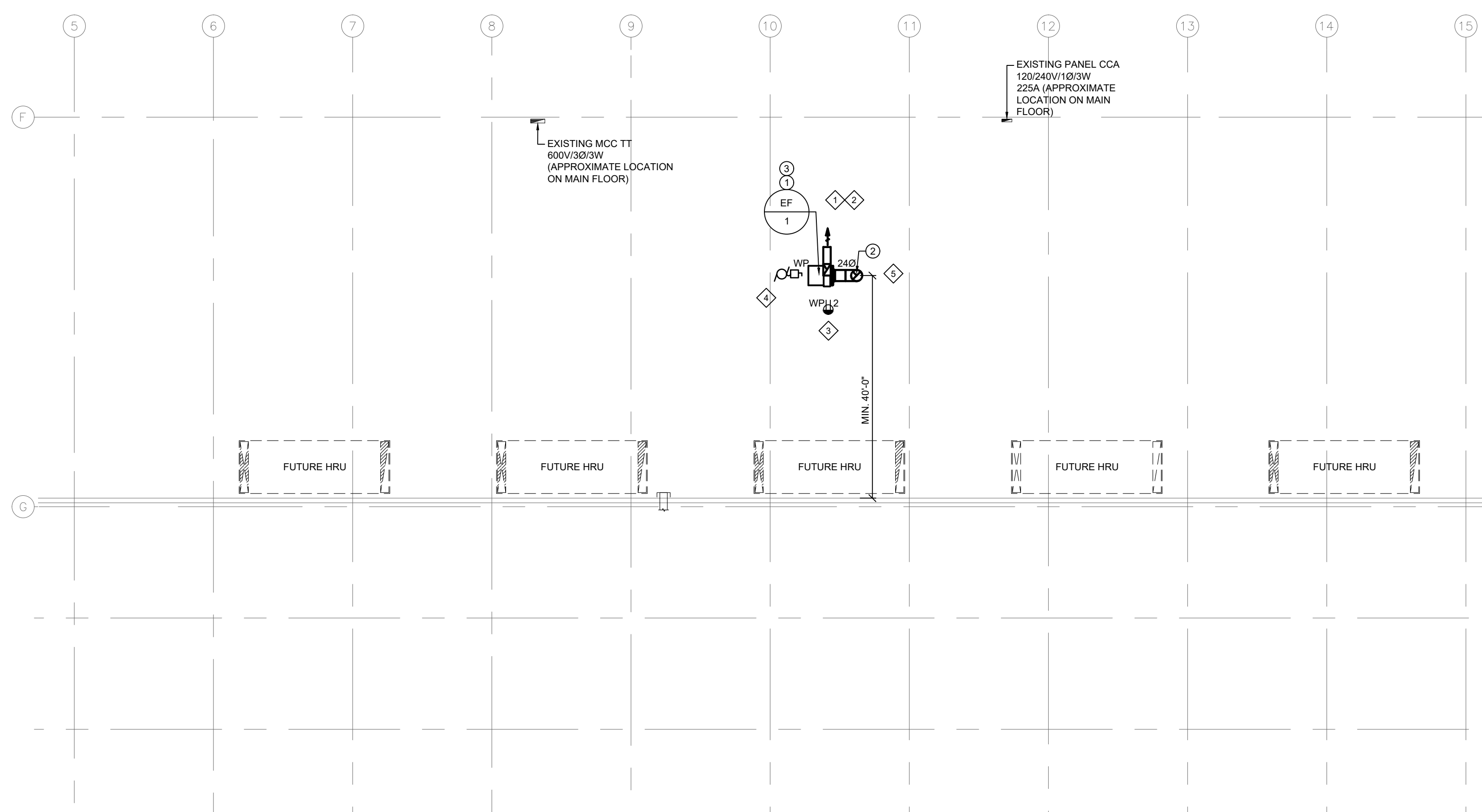


1 PARTIAL REPAIR GARAGE ROOF PLAN - MECHANICAL AND ELECTRICAL - DEMOLITION
SCALE: 1/16"=1'-0"



2 PARTIAL REPAIR GARAGE ROOF PLAN - MECHANICAL AND ELECTRICAL - NEW CONSTRUCTION
SCALE: 1/16"=1'-0"

GENERAL NOTES - MECHANICAL

- A. ALL ABANDONED EQUIPMENT AND SERVICES WITHIN AREA OF WORK SHALL BE REMOVED.
- B. THIS BUILDING MAY CONTAIN ASBESTOS. REFER TO FRONT END SPECIFICATIONS FOR FURTHER INFORMATION.
- C. PRIOR TO DEMOLISHING AND REMOVAL OF THE EXISTING EQUIPMENT, COORDINATE WITH THE CITY. RETURN EQUIPMENT TO THE CITY AS REQUESTED.

GENERAL NOTES - ELECTRICAL

- A. ALL EQUIPMENT, DEVICES, FIXTURES REMOVED UNDER DEMOLITION SCOPE WILL BE FIRST OFFERED TO THE CITY FOR REFUSAL FOLLOWED BY CONTRACTOR AND FINALLY TO BE LEGALLY DISPOSED OF.
- B. FOR ALL EXISTING ELECTRICAL DEVICES, EQUIPMENT, ETC. THAT ARE REMOVED, REMOVE EXISTING CONDUIT, WIRING, ETC. BACK TO SOURCE.
- C. CONTRACTOR SHALL BE RESPONSIBLE FOR COORDINATING EXACT LAYOUT, ROUTING, ETC. VERIFY EXISTING SERVICES ON SITE.
- D. VERIFY ALL EXISTING EQUIPMENT BEING RE-USED IS WORKING PRIOR TO INSTALLATION. SUPPLY NEW EQUIPMENT AS NECESSARY.
- E. CONTRACTOR TO DETERMINE EXACT CABLE ROUTES ON SITE. WHERE POSSIBLE FOLLOW EXISTING CABLE ROUTES THROUGH BUILDING. RE-USE EXISTING OPENINGS AND PENETRATIONS TO ROUTE CABLES. PROVIDE NEW PENETRATIONS WHERE EXISTING CANNOT BE RE-USED. SEAL ALL PENETRATIONS.
- F. SEAL ALL PENETRATIONS THROUGH FIRE RATED WALLS WITH FIRE STOP MATERIAL AS REQUIRED TO MAINTAIN ASSEMBLY RATING.
- G. COORDINATE FULLY WITH MECHANICAL FOR THE SEQUENCE OF DEMOLITION AND CONSTRUCTION.
- H. COORDINATE WITH THE CITY PRIOR TO SHUT DOWN OF EQUIPMENT.
- I. DRAWINGS SHOW ONLY A GENERAL SCHEMATIC OF NEW AND SOME EXISTING SYSTEMS. ROUTING CONDUITS AND/OR CABLES AND LOCATIONS SHALL SUITE SITE CONDITIONS AND MAY HAVE TO BE CHANGED TO AVOID CONFLICT WITH EXISTING STRUCTURE AND SERVICES. WHEN A CONFLICT CANNOT BE AVOIDED, THE EXISTING SERVICES SHALL BE MODIFIED AS REQUIRED.
- J. PROVIDE LIQUID TIGHT CONNECTORS FOR ALL CONDUITS INSTALLED INSIDE GARAGE AND ON ROOF.

DEMOLITION KEY NOTES - MECHANICAL

- 1. EXISTING EXHAUST FAN AND DUCT TO BE COMPLETELY REMOVED BACK TO WALL PENETRATION. REFER TO MECHANICAL DEMOLITION KEYNOTE 3 ON ME1.1.

DEMOLITION KEY NOTES - ELECTRICAL

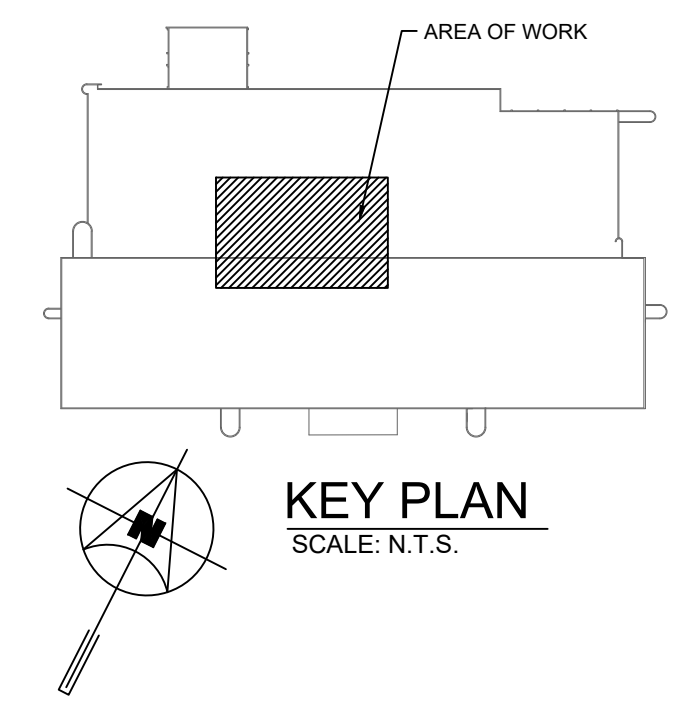
- 1. DISCONNECT AND REMOVE WIRE, CONDUIT, ETC. ASSOCIATED WITH EXHAUST FAN EF-25 (LOCATED ON ROOF BACK TO EXISTING MCC-TT. COORDINATE REMOVAL WITH MECHANICAL CONTRACTOR).
- 2. SEAL ALL EXISTING OPENINGS THROUGH THE ROOF AND WALL EXPOSED FROM THE REMOVAL OF EXISTING WIRE, CONDUIT, ETC. MAKE WEATHER TIGHT.

KEY NOTES - MECHANICAL

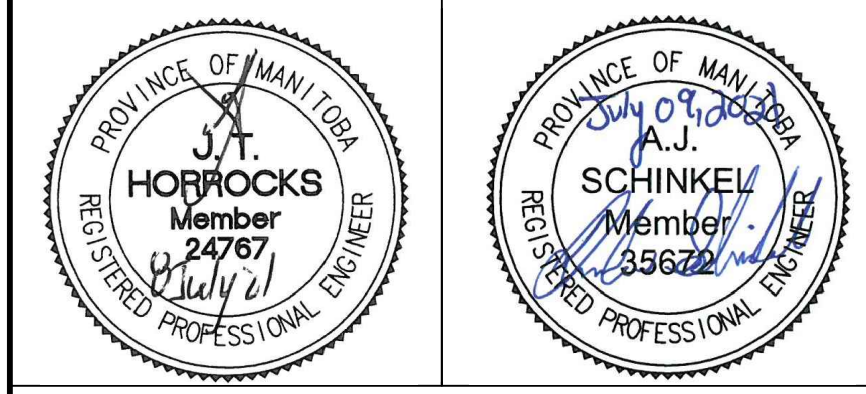
- 1. PROVIDE NEW EXHAUST FAN ON LOW ROOF. REFER TO DETAIL.
- 2. FLASH AND SEAL ROOF OPENING WHERE DUCTWORK PASSES THROUGH.
- 3. PROVIDE GOOSENECK DISCHARGE DUCTWORK TO FAN OUTLET.

KEY NOTES - ELECTRICAL

- 1. NEW EXHAUST FAN BY MECHANICAL. WIRE AND CONNECT TO EXISTING MCC-TT LOCATED ON MAIN FLOOR. REFER TO MOTOR SCHEDULE FOR FEEDER SIZE. PROVIDE LOCAL WEATHERPROOF DISCONNECT (NEMA 4) IN ACCORDANCE WITH CEC AND CITY OF WINNIPEG BY-LAWS. COORDINATE INSTALLATION WITH MECHANICAL CONTRACTOR.
- 2. CONTRACTOR TO DETERMINE EXACT FEEDER ROUTE ON SITE. ROUTE FEEDERS/ CONDUIT PARALLEL TO MECHANICAL PIPING WHERE POSSIBLE. PROVIDE PRE-MANUFACTURED CONDUIT SUPPORTS (EATON DURABLE-LOCK ROOF TOP SUPPORTS DBS SERIES OR APPROVED EQUAL) AS REQUIRED TO SUPPORT CONDUIT ON ROOF. REFER TO DETAIL 7 DRAWING ME5.1 FOR FURTHER INFORMATION.
- 3. SUPPLY, WIRE AND INSTALL A NEW 20A 5-20R WEATHERPROOF GPI RECEPTACLE ON ROOF IN VICINITY (WITHIN 7.5 METERS) OF NEW EXHAUST FAN. CONNECT NEW ROOF TOP RECEPTACLE TO A NEW DEDICATED 20A CIRCUIT FROM PANEL CCA WITH 2#10 IN CONDUIT. ROUTE CONDUIT ALONG SAME PATH AS NEW EXHAUST FAN FEEDERS. INSTALL AS PER REQUIREMENTS OF CEC 26-708 AND CEC 26-710 AND WEB 26-708.
- 4. PROVIDE UNISTRUT SECURED TO EXISTING ROOF CURB AS REQUIRED TO INDEPENDENTLY MOUNT NEW ROOF TOP DISCONNECT AND RECEPTACLE OFF MECHANICAL EQUIPMENT. PROVIDE NECESSARY BRACKETS, SUPPORTS, ETC. AS NECESSARY TO SECURE THE UNISTRUT TO THE CURB. COORDINATE INSTALLATION WITH MECHANICAL CONTRACTOR. REFER TO DETAIL 6 ON DRAWING ME5.1 FOR FURTHER INFORMATION.
- 5. CONDUIT TO PENETRATE ROOF WITHIN NEW PITCH BOX PROVIDED (REFER TO DETAIL 5 ON DRAWING ME5.1). SEAL ALL PENETRATIONS AND MAKE WEATHER TIGHT. COORDINATE INSTALLATION WITH MECHANICAL CONTRACTOR.



NO.	Description	JH/AS	09/07/21
0	ISSUED FOR CONSTRUCTION		



770 Bradford Street
Winnipeg, Canada
T 204 775 0291
SMSeng.com



Project Title
**TRANSIT HOIST 10-18
VEHICLE EXHAUST**

WINNIPEG MANITOBA

Drawing Title
**PARTIAL REPAIR GARAGE
ROOF PLAN - MECHANICAL
AND ELECTRICAL -
DEMOLITION AND NEW
CONSTRUCTION**

Drawn By	Checked By	Approved By
LP/WPD	XZ/CRM	JH/AS
Scale	Date	Project No.
AS NOTED	JULY 2021	21-083-01
Revision Number	Drawing Number	Sheet Order
0	ME2.1	2 OF 5



FILE NAME AND PATH: G:\PROJECTS\2021\10-18 Transit Hoist 10-18 Vehicle Exhaust\3-03_Coord_Rev03_S-Menu2\101011_ME2_1_PWK_AJ_R09 LAYOUT_ME2_1.DWG DATE PLOTTED: 09/07/21 11:03:33 AM LAST SAVED BY: csmann