

V:\transportation planning drafting\01 - final\T-3502\Leila_Protected Bike Lanes_R1_Opt 1.dwg

LEGEND

- EXISTING CURB
- EXISTING SIDEWALK
- PROPOSED CURB/MEDIAN
- PROPOSED SIDEWALK
- ASPHALT AT PATH
- REMOVAL/RELOCATION ⬮
- DETECTABLE WARNING TILE

PRELIMINARY

NOT TO BE USED FOR
CONSTRUCTION



THE CITY OF WINNIPEG
PUBLIC WORKS DEPARTMENT
TRANSPORTATION DIVISION

DRAWN BY GSP/MLM

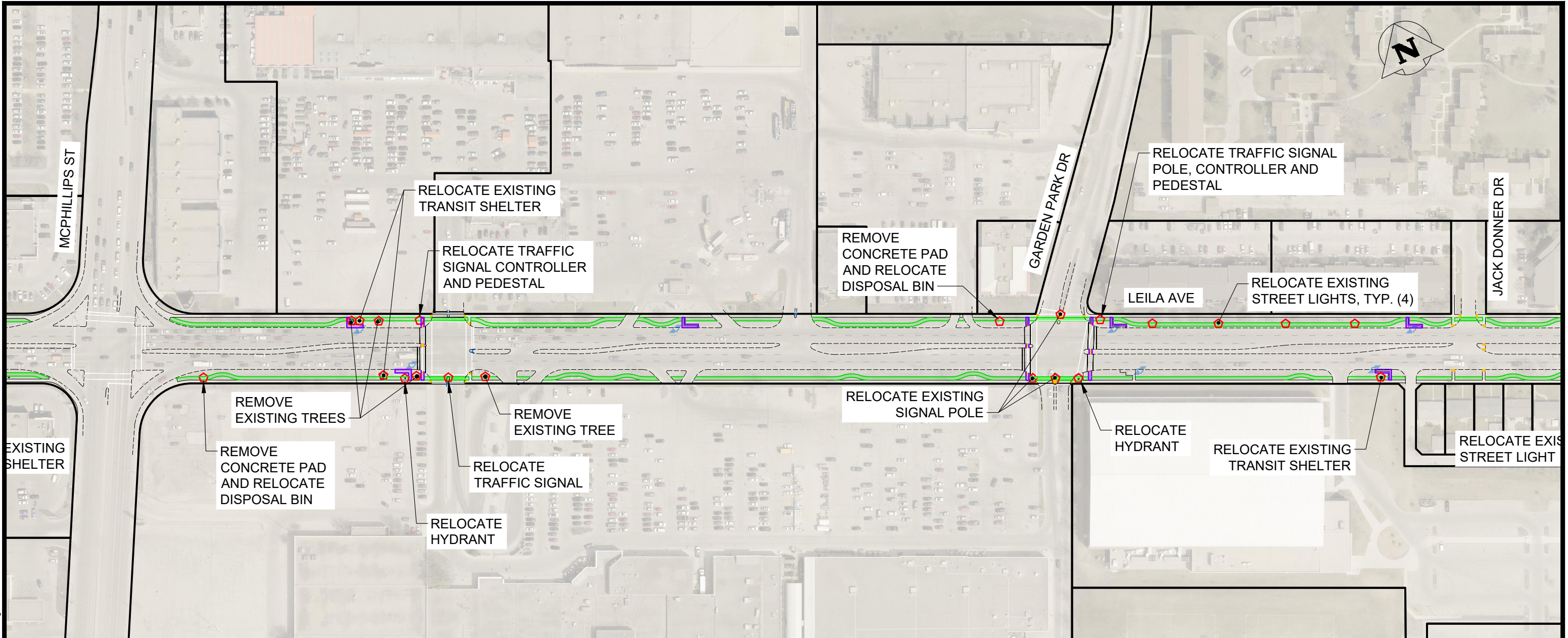
DATE 2021-01-11

SCALE
HORIZONTAL: 1:2000
VERTICAL:

Leila Avenue
from NW Hydro Corridor to Diplomat Drive
Off-Street Bike Paths

SHEET 1 OF 3

CITY DRAWING NUMBER:
T-3502 R1_Opt 1



LEGEND

- EXISTING CURB
- EXISTING SIDEWALK
- PROPOSED CURB/MEDIAN
- PROPOSED SIDEWALK
- PAVEMENT WIDENING
- ASPHALT AT PATH
- REMOVAL/RELOCATION
- DETECTABLE WARNING TILE

PRELIMINARY

NOT TO BE USED FOR CONSTRUCTION



THE CITY OF WINNIPEG
PUBLIC WORKS DEPARTMENT
TRANSPORTATION DIVISION

DRAWN BY GSP/MLM

DATE 2021-01-11

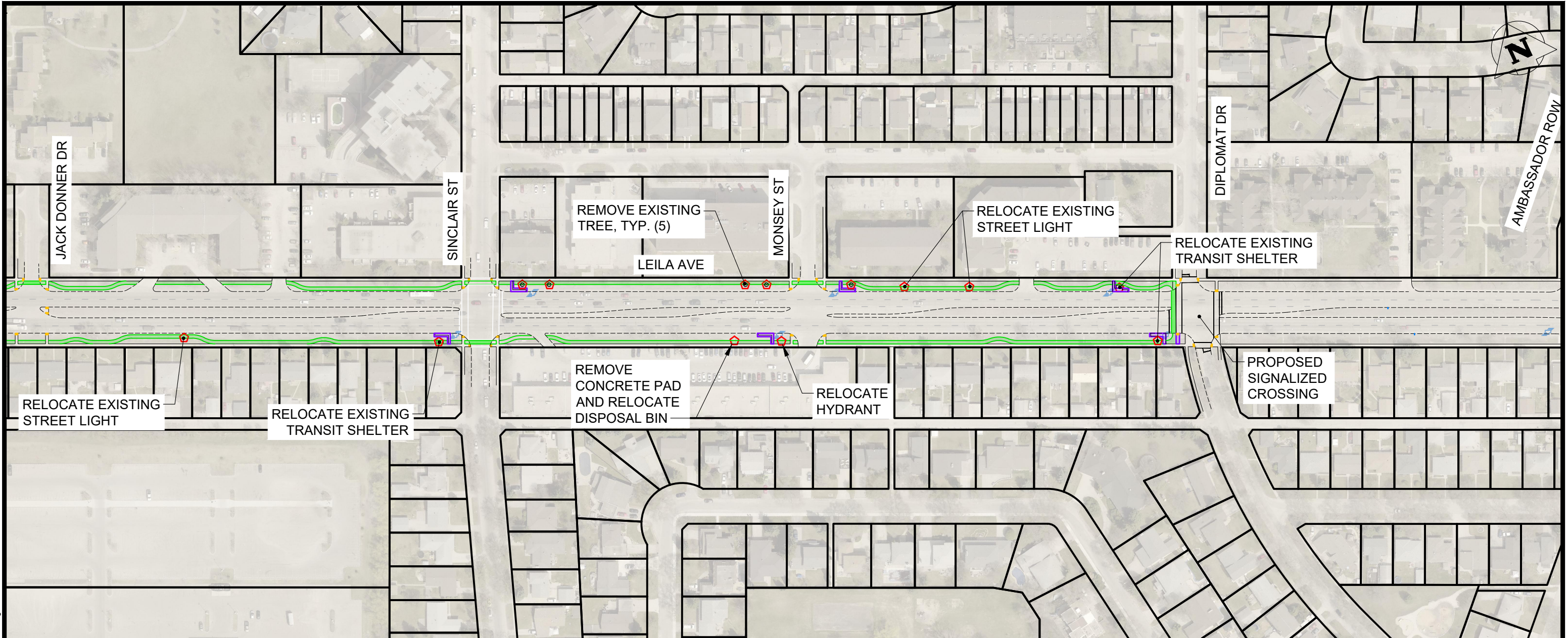
SCALE
HORIZONTAL: 1:2000
VERTICAL:

Leila Avenue
from NW Hydro Corridor to Diplomat Drive
Off-Street Bike Paths

SHEET 2 OF 3

CITY DRAWING NUMBER:
T-3502 R1_Opt 1

V:\transportation planning drafting\01 - final\T-3502 Leila_Protected Bike Lanes_R1_Opt 1.dwg



V:\transportation planning drafting\01 - final\T-3502 R1 - Protected Bike Lanes_R1_Opt 1.dwg

LEGEND

EXISTING CURB	-----
EXISTING SIDEWALK	_____
PROPOSED SIDEWALK	
ASPHALT AT PATH	
REMOVAL/RELOCATION	⬮
DETECTABLE WARNING TILE	

PRELIMINARY

NOT TO BE USED FOR
CONSTRUCTION

THE CITY OF WINNIPEG PUBLIC WORKS DEPARTMENT TRANSPORTATION DIVISION	
DRAWN BY GSP/MLM DATE 2021-01-11	SCALE HORIZONTAL: 1:2000 VERTICAL:

Leila Avenue
 from NW Hydro Corridor to Diplomat Drive
 Off-Street Bike Paths

SHEET	OF
3	3
CITY DRAWING NUMBER:	
T-3502 R1_Opt 1	