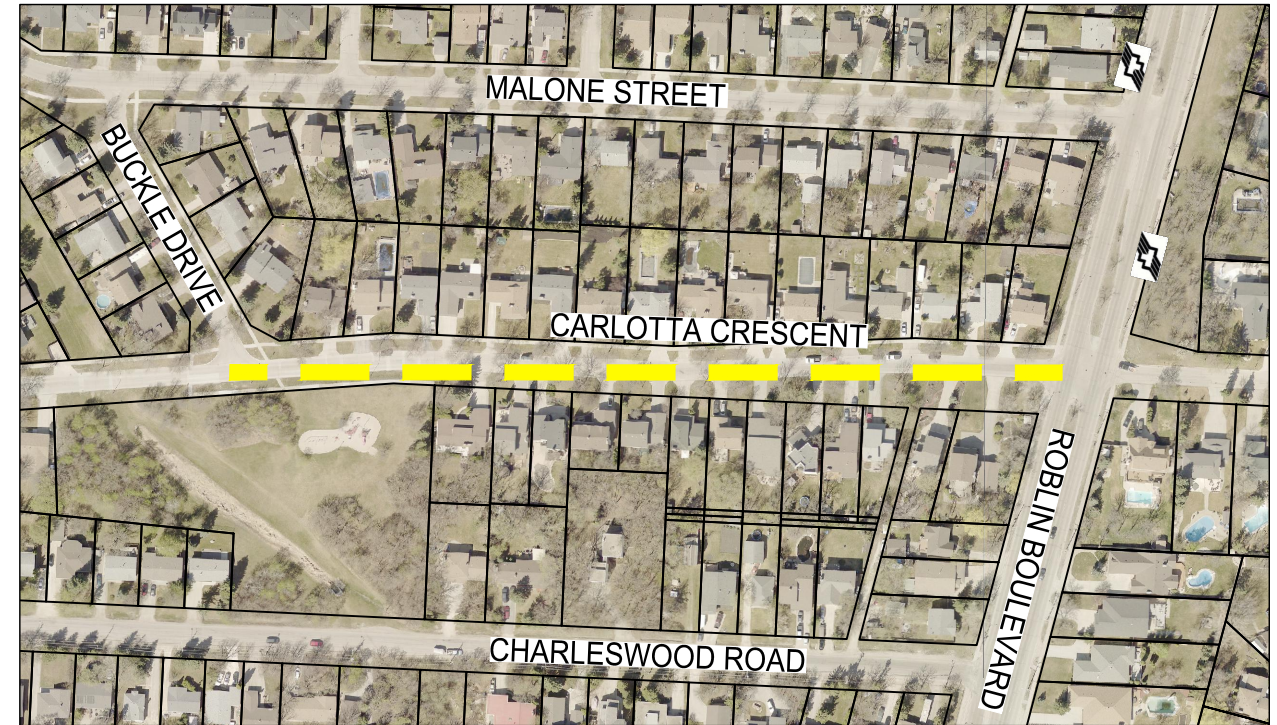




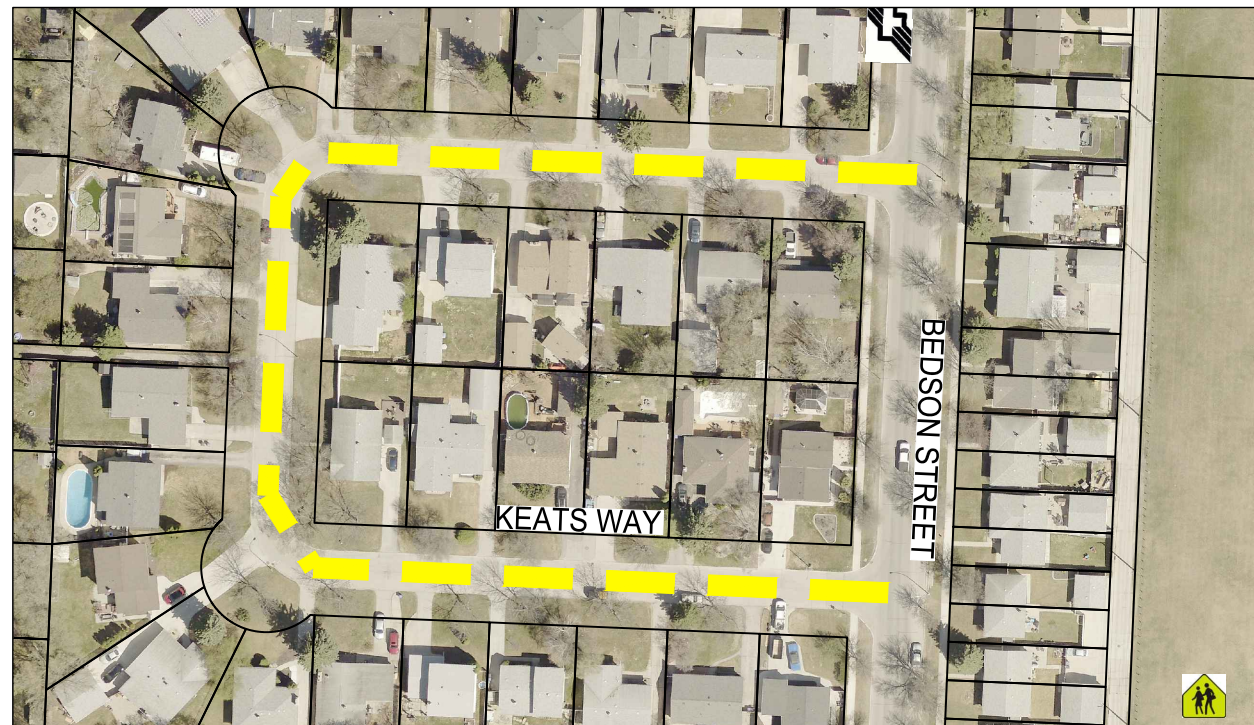
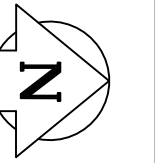
**BYRD AVENUE - WESTWOOD DRIVE TO ROUGE ROAD**

SCALE 1:3000



**CARLOTTA CRESCENT - ROBLIN BOULEVARD TO BUCKLE DRIVE**

SCALE 1:3000



**KEATS WAY - BEDSON STREET CRESCENT TO BEDSON STREET**

SCALE 1:1500



**LEACOCK AVENUE - WESTWOOD DRIVE TO CARROLL ROAD**

SCALE 1:2500



Jul 09, 2021 - 1:45pm  
 P:\2021\211-06451-00 - 2021 TBO\14.0 Tech - Prof Services\14.07 Municipal\_Roads\Construction Drawings\Contract 3\211-06451-00\_Contract\_3\_Plan.dwg - tab.01

**PRELIMINARY**

**LEGEND**

- BUS ROUTE
- SCHOOL LOCATION
- LIMIT OF CONSTRUCTION

**METRIC**

WHOLE NUMBERS INDICATE MILLIMETRES  
 DECIMALIZED NUMBERS INDICATE METRES



**LOCATIONS APPROVED UNDERGROUND STRUCTURES**

SIGNED BY: \_\_\_\_\_ DATE: \_\_\_\_\_  
 SUPV U/G STRUCTURES \_\_\_\_\_ DATE \_\_\_\_\_  
 LOCATION OF UNDERGROUND STRUCTURES AS SHOWN ARE BASED ON THE BEST INFORMATION AVAILABLE BUT NO GUARANTEE IS GIVEN THAT ALL EXISTING UTILITIES ARE SHOWN OR THAT THE GIVEN LOCATIONS ARE EXACT CONFIRMATION OF EXISTENCE AND EXACT LOCATION OF ALL SERVICES MUST BE OBTAINED FROM THE INDIVIDUAL UTILITIES BEFORE PROCEEDING WITH CONSTRUCTION.

NO.	REVISIONS	DATE	BY
2	ISSUED FOR TENDER	09/07/21	VM
1	ISSUED FOR CLIENT REVIEW	25/06/21	VM



WSP Canada Group Limited  
 Suite 111 - 93 Lombard Ave  
 Winnipeg, MB R3B 3B1  
 T. 204.943.3178  
 F. 204.943.4948  
 www.wsp.com

DESIGNED BY	CHECKED BY
MS	VM
DRAWN BY	APPROVED BY
TW	VM
HOR. SCALE	VERTICAL
VARIES	-
DATE	DATE
09-JULY-2021	

ENGINEER'S SEAL
CONSULTANT ACAD DWG. NO.
211-06451-03-01

**THE CITY OF WINNIPEG**  
 PUBLIC WORKS DEPARTMENT  
 ENGINEERING SERVICES DIVISION

2021 THIN BITUMINOUS OVERLAY (TBO) PROGRAM  
 BYRD AVENUE, CARLOTTA CRESCENT, KEATS WAY  
 LEACOCK AVENUE  
 ASPHALT OVERLAY

CITY DRAWING NUMBER  
 SHEET 1 OF 4  
 BID NO.  
 451-2021

**NOTE:**  
 These design documents are prepared solely for the use by the party with whom the design professional has entered into a contract and there are no representations of any kind made by the design professional to any party with whom the design professional has not entered into a contract.