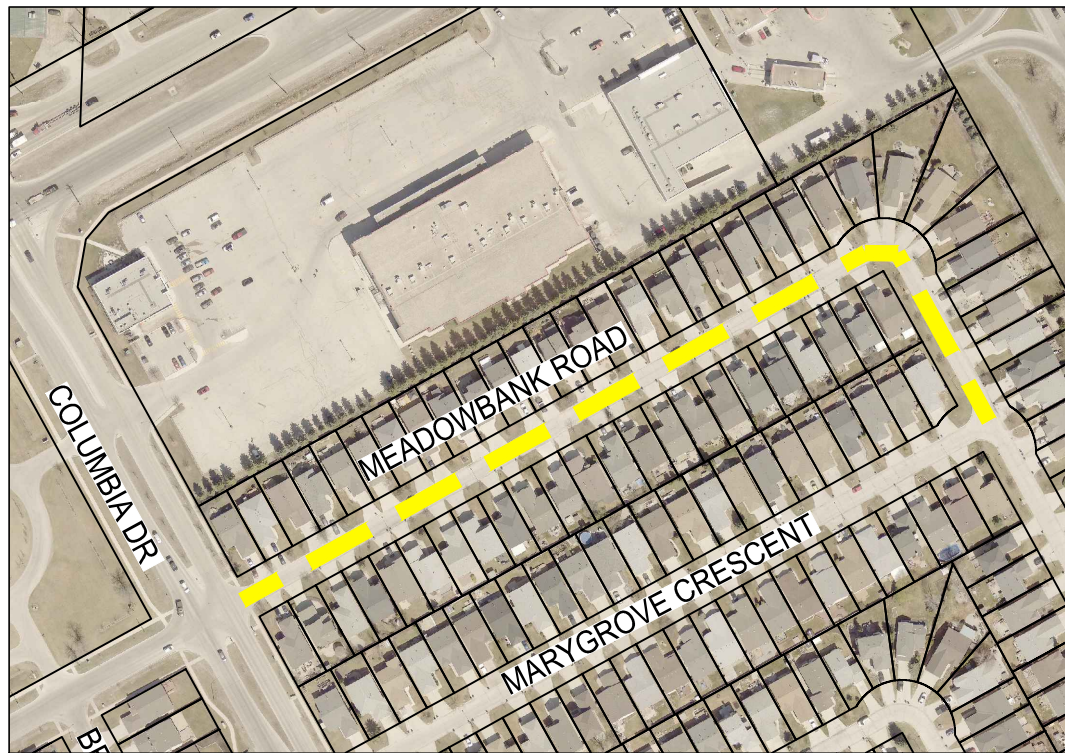
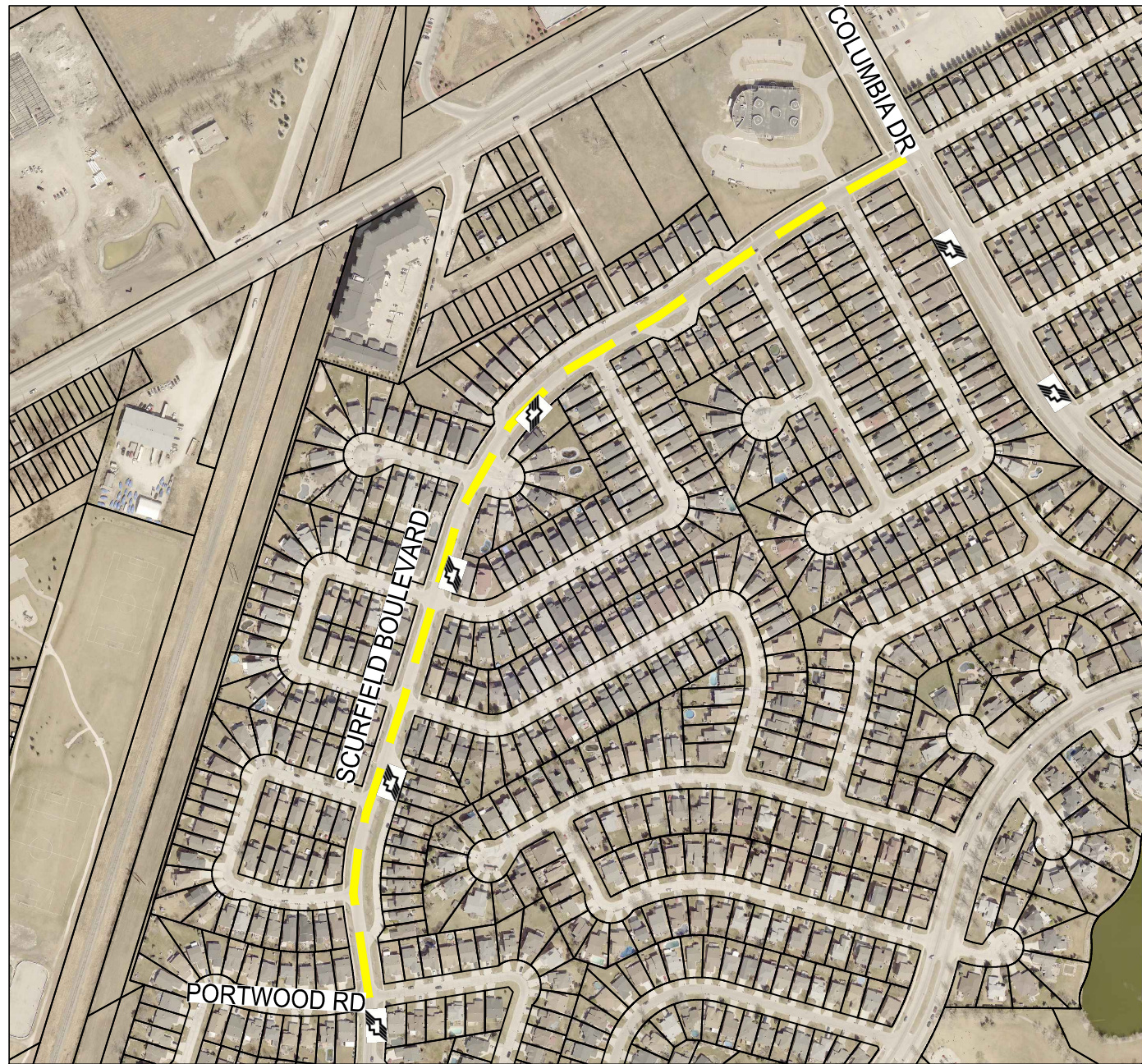


Jul 09, 2021 - 2:33pm
 P:\2021\211-06451-00 - 2021 TBO\1.0 Tech - Prof Services\1.07 Municipal_Roads\Construction Drawings\Contract 3\211-06451-00_Contract 3_Plan.dwg - tab:04



**MEADOWBANK ROAD - MARYGROVE CRESCENT
 TO COLUMBIA DRIVE**
 SCALE 1:3000



**SCURFIELD BOULEVARD - COLUMBIA DRIVE
 TO PORTWOOD ROAD**
 SCALE 1:5000



PRELIMINARY

LEGEND

- BUS ROUTE
- SCHOOL LOCATION
- LIMIT OF CONSTRUCTION

NOTE:
 These design documents are prepared solely for the use by the party with whom the design professional has entered into a contract and there are no representations of any kind made by the design professional to any party with whom the design professional has not entered into a contract.

METRIC

WHOLE NUMBERS INDICATE MILLIMETRES
 DECIMALIZED NUMBERS INDICATE METRES



**LOCATIONS APPROVED
 UNDERGROUND STRUCTURES**

SIGNED BY:	DATE
SUPV UG STRUCTURES	

LOCATION OF UNDERGROUND STRUCTURES AS SHOWN ARE BASED ON THE BEST INFORMATION AVAILABLE BUT NO GUARANTEE IS GIVEN THAT ALL EXISTING UTILITIES ARE SHOWN OR THAT THE GIVEN LOCATIONS ARE EXACT CONFIRMATION OF EXISTENCE AND EXACT LOCATION OF ALL SERVICES MUST BE OBTAINED FROM THE INDIVIDUAL UTILITIES BEFORE PROCEEDING WITH CONSTRUCTION.

NO.	REVISIONS	DATE	BY
2	ISSUED FOR TENDER	09/07/21	VM
1	ISSUED FOR CLIENT REVIEW	25/06/21	VM

		WSP Canada Group Limited Suite 111 - 93 Lombard Ave Winnipeg, MB R3B 3B1 T. 204.943.3178 F. 204.943.4948 www.wsp.com	
DESIGNED BY	MS	CHECKED BY	VM
DRAWN BY	TW	APPROVED BY	VM
HOR. SCALE	VARIES		RELEASED FOR CONSTRUCTION
VERTICAL	-		DATE
DATE	09-JULY-2021		DATE

ENGINEER'S SEAL	
CONSULTANT ACAD DWG. NO.	211-06451-03-04

 THE CITY OF WINNIPEG PUBLIC WORKS DEPARTMENT ENGINEERING SERVICES DIVISION	2021 THIN BITUMINOUS OVERLAY (TBO) PROGRAM MEADOWBANK ROAD, SCURFIELD BOULEVARD ASPHALT OVERLAY	CITY DRAWING NUMBER SHEET 4 OF 4 BID NO. 451-2021
	MEADOWBANK ROAD, SCURFIELD BOULEVARD ASPHALT OVERLAY	