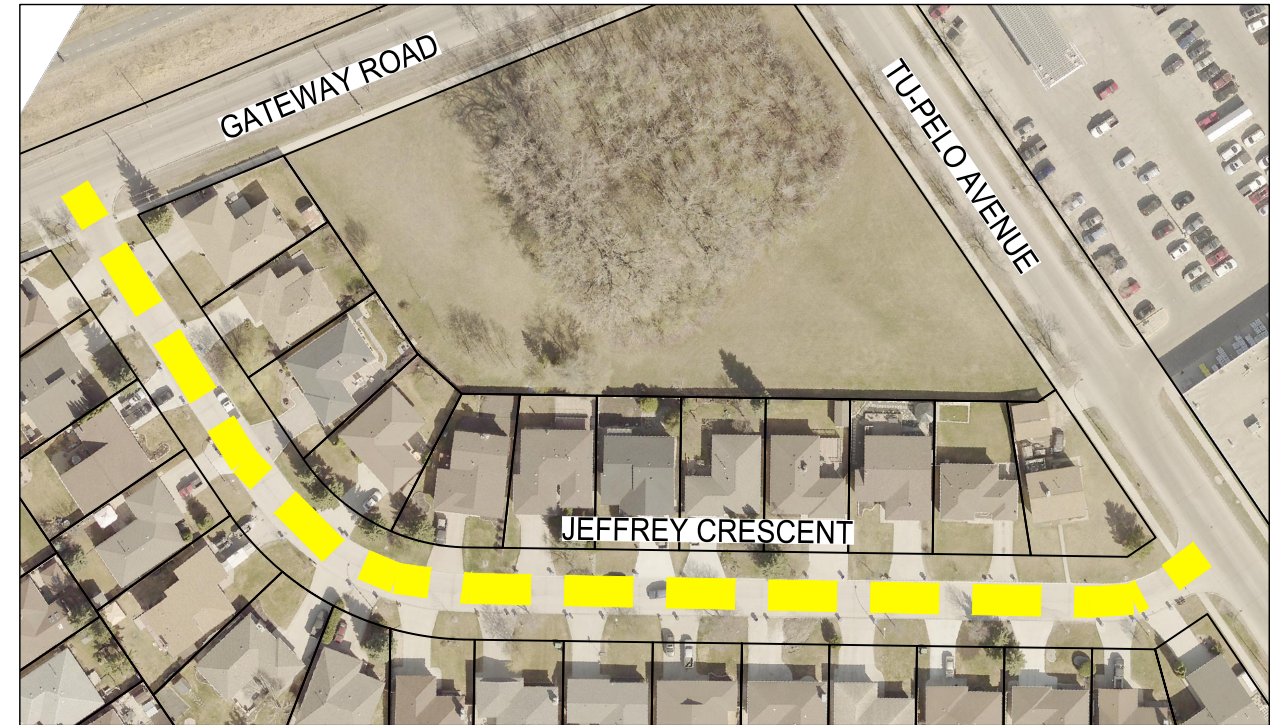




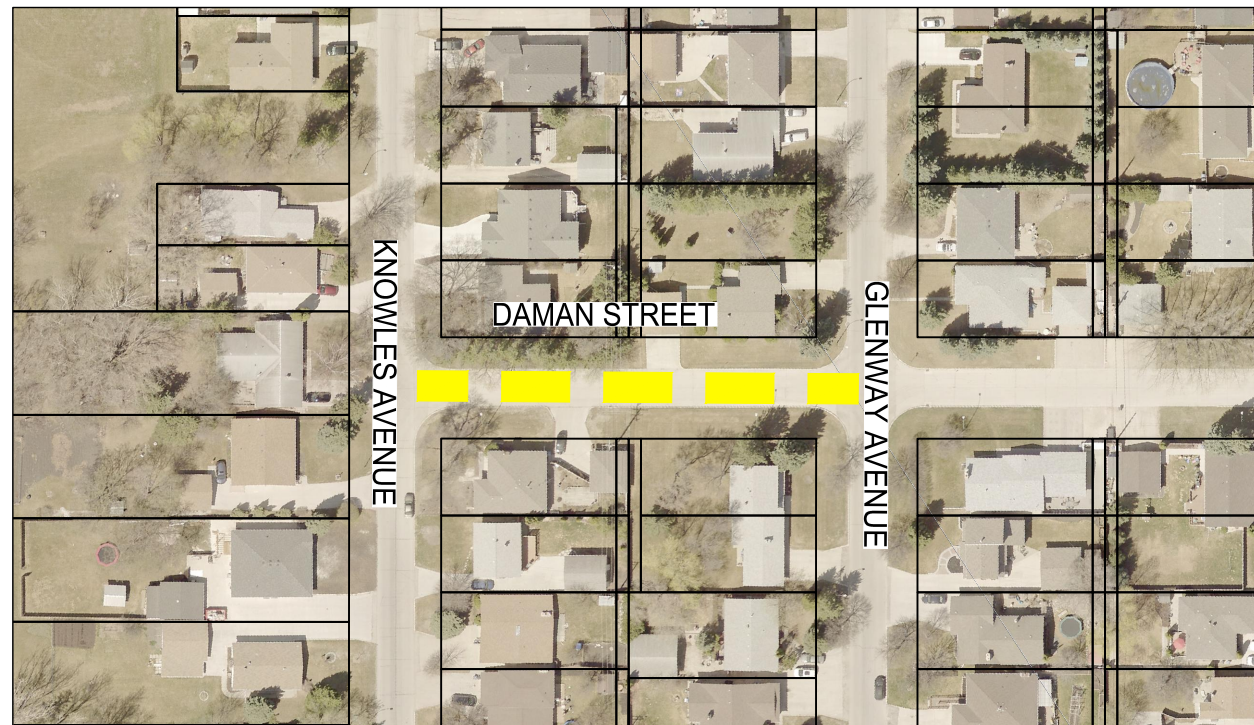
GATEWAY ROAD - RIVERTON AVENUE TO JOHNSON AVENUE E.

SCALE 1:2000



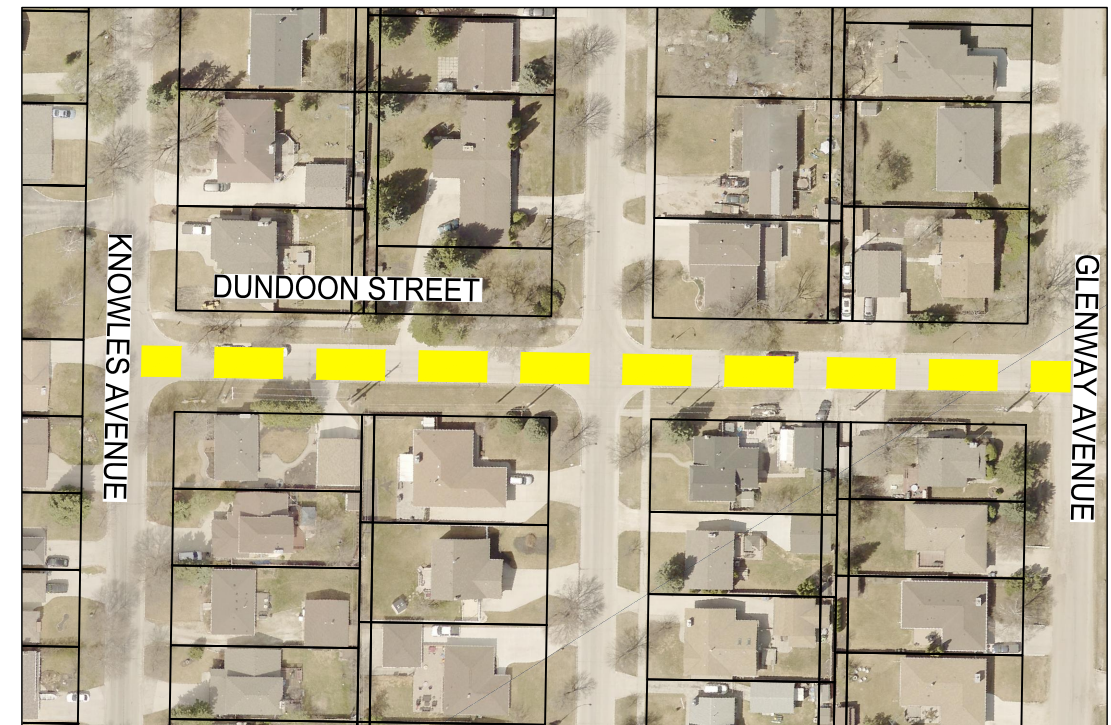
JEFFREY CRESCENT - TU PELO AVENUE TO GATEWAY ROAD

SCALE 1:5000



DAMAN STREET - EMERSON AVENUE TO KNOWLES AVENUE

SCALE 1:1500






DUNDOON STREET - GLENWAY AVENUE TO KNOWLES AVENUE

SCALE 1:1500



PRELIMINARY

LEGEND

-  BUS ROUTE
-  SCHOOL LOCATION
-  LIMIT OF CONSTRUCTION

METRIC

WHOLE NUMBERS INDICATE MILLIMETRES
DECIMALIZED NUMBERS INDICATE METRES



LOCATIONS APPROVED UNDERGROUND STRUCTURES

SIGNED BY: _____ DATE: _____
 SUPV UG STRUCTURES _____ DATE: _____
 LOCATION OF UNDERGROUND STRUCTURES AS SHOWN ARE BASED ON THE BEST INFORMATION AVAILABLE BUT NO GUARANTEE IS GIVEN THAT ALL EXISTING UTILITIES ARE SHOWN OR THAT THE GIVEN LOCATIONS ARE EXACT CONFIRMATION OF EXISTENCE AND EXACT LOCATION OF ALL SERVICES MUST BE OBTAINED FROM THE INDIVIDUAL UTILITIES BEFORE PROCEEDING WITH CONSTRUCTION.

NO.	REVISIONS	DATE	BY
2	ISSUED FOR TENDER	09/07/21	VM
1	ISSUED FOR CLIENT REVIEW	25/06/21	VM

wsp		WSP Canada Group Limited Suite 111 - 93 Lombard Ave Winnipeg, MB R3B 3B1 T. 204.943.3178 F. 204.943.4948 www.wsp.com	
DESIGNED BY	MS	CHECKED BY	VM
DRAWN BY	TW	APPROVED BY	VM
HOR. SCALE	VARIES	RELEASED FOR CONSTRUCTION	
VERTICAL	-	DATE	09-JULY-2021

ENGINEER'S SEAL	
CONSULTANT ACAD DWG. NO.	211-06451-02-01

THE CITY OF WINNIPEG
 PUBLIC WORKS DEPARTMENT
 ENGINEERING SERVICES DIVISION

2021 THIN BITUMINOUS OVERLAY (TBO) PROGRAM

GATEWAY ROAD, JEFFREY CRESCENT, DAMAN STREET, DUNDOON STREET
 ASPHALT OVERLAY

CITY DRAWING NUMBER
 SHEET 1 OF 5

BID NO.
 452-2021

NOTE:
 These design documents are prepared solely for the use by the party with whom the design professional has entered into a contract and there are no representations of any kind made by the design professional to any party with whom the design professional has not entered into a contract.