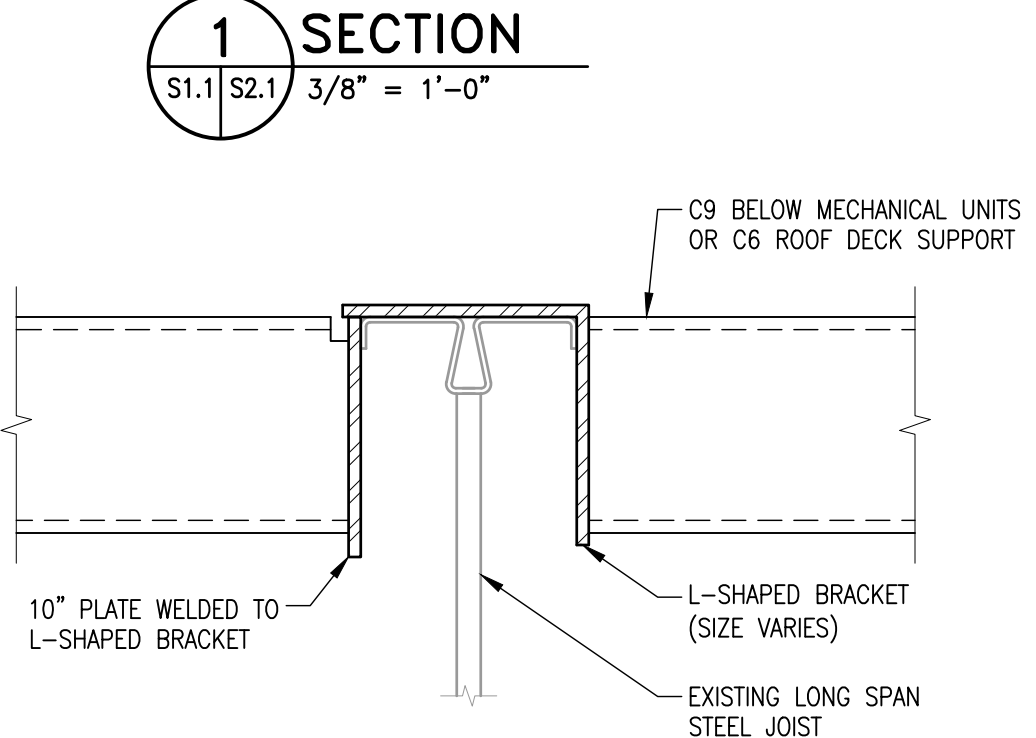
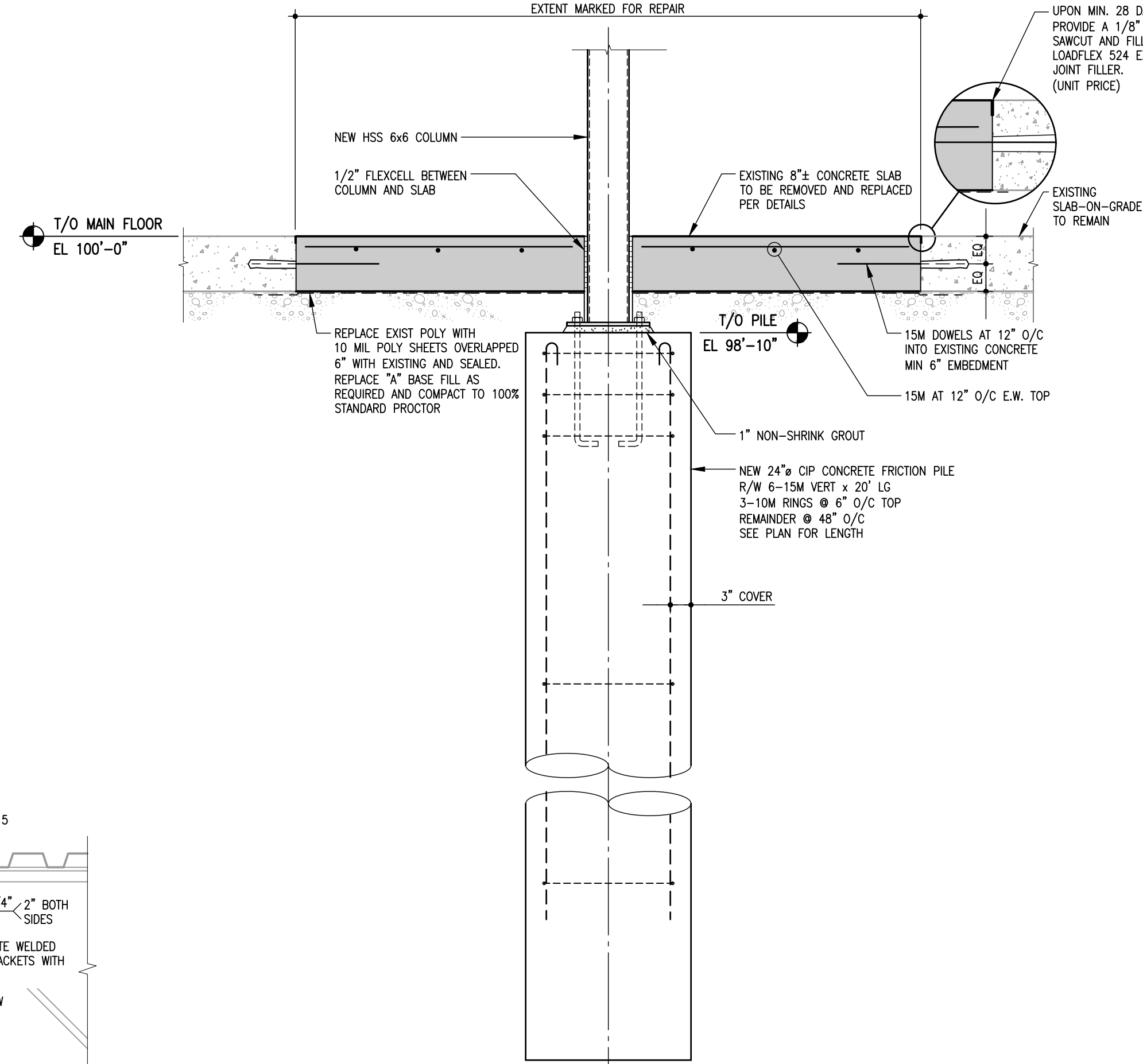


2 SECTION
S2.1 S2.1 1 1/2" = 1'-0"



1 SECTION
S1.1 S2.1 3/8" = 1'-0"

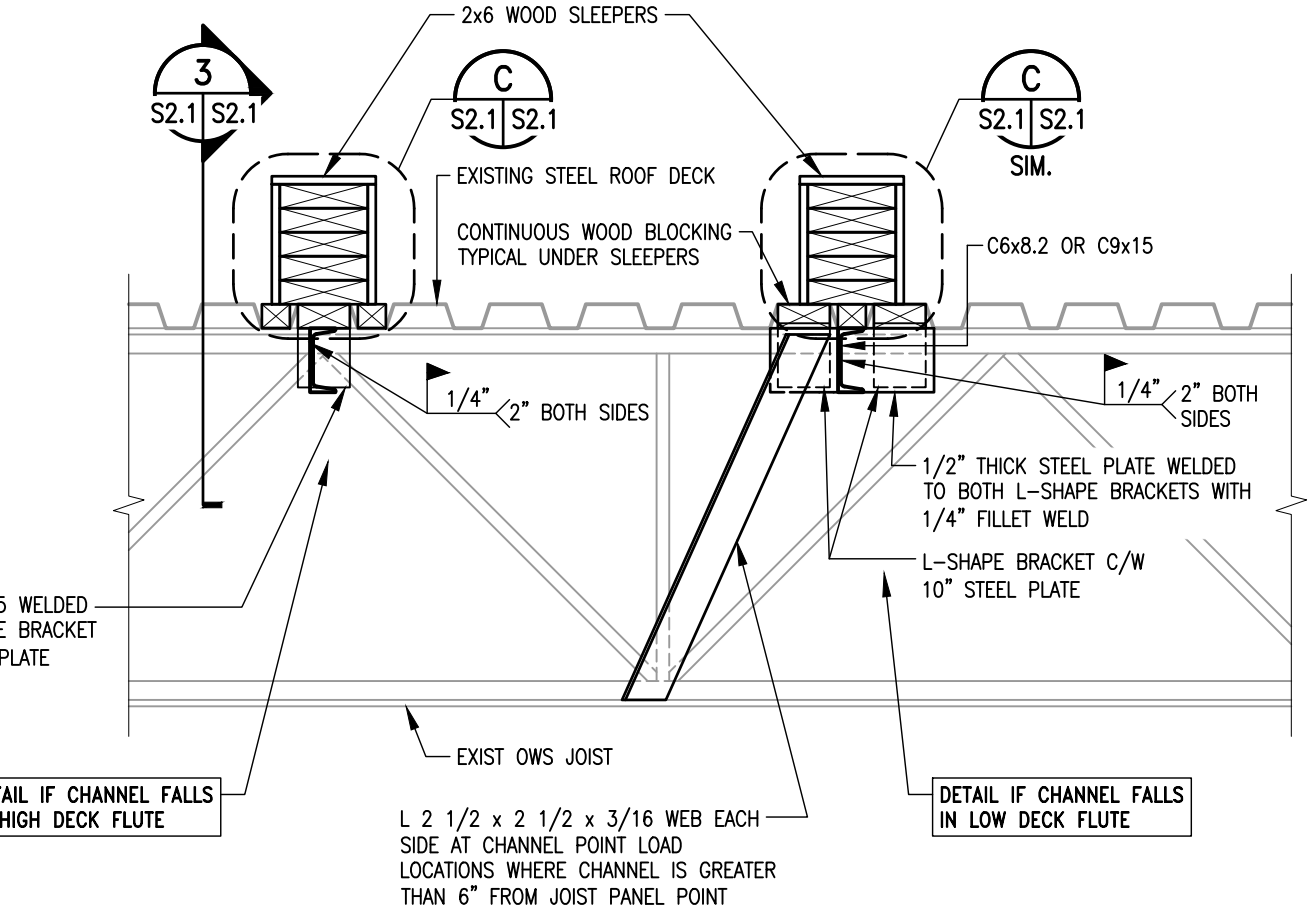


4 TYPICAL NEW PILE INSTALLATION AND SLAB-ON-GRADE INFILL DETAIL
S1.1 S2.1 3/4" = 1'-0"

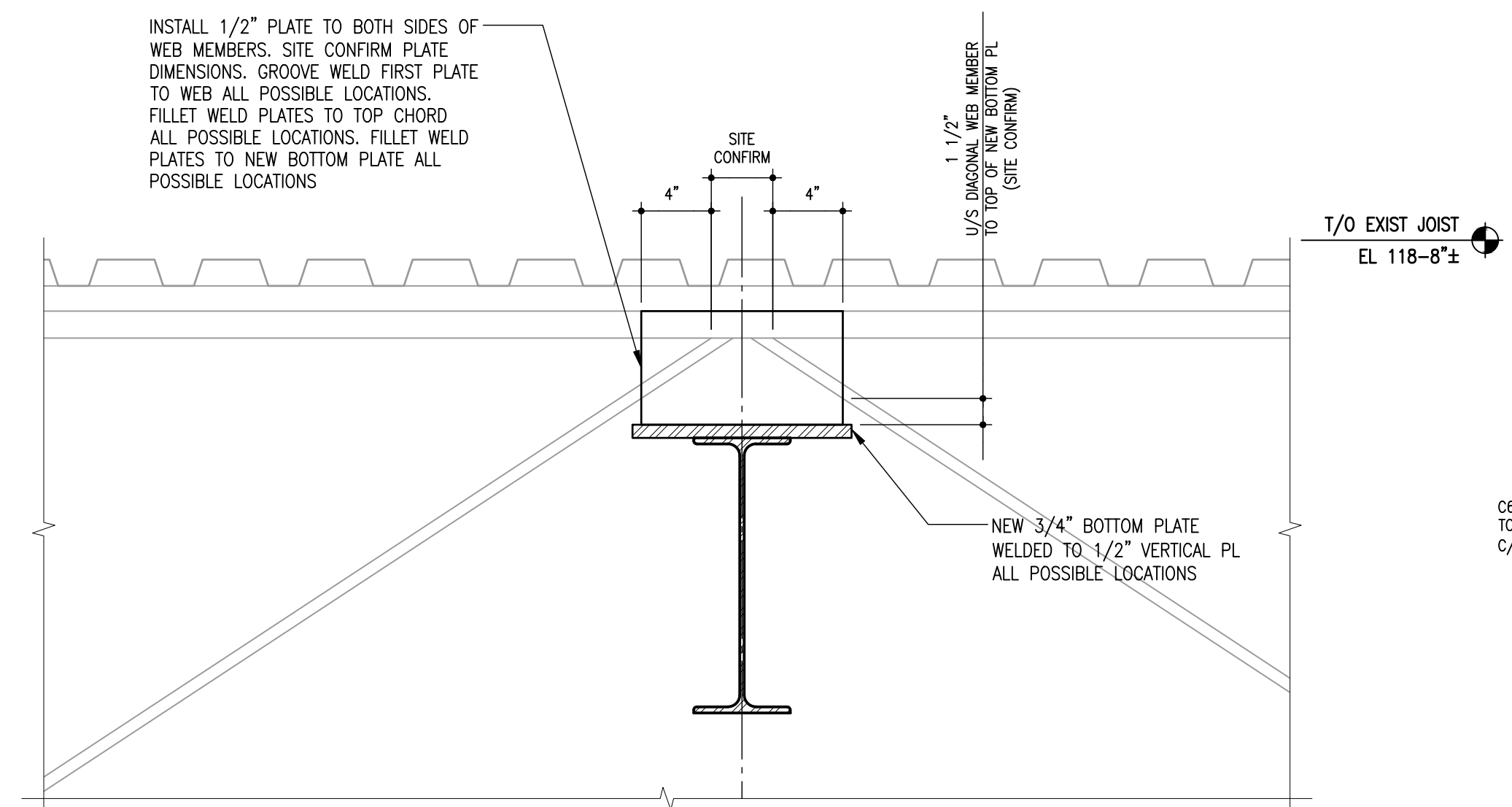
- NOTES:
1. PRIOR TO DEMOLITION, CONFIRM LOCATION(S) ANY OF EMBEDDED CONDUIT.
 2. SAWCUT PERIMETER TO MIN 3/4" DEPTH. FULL DEPTH SAW CUTTING IS PERMITTED IN AREAS WITHOUT EMBEDDED CONDUIT.
 3. BREAK OUT AND REMOVE EXISTING SLAB-ON-GRADE.
 4. WATERBLAST EXISTING CONCRETE SURFACES AT 4,000 PSL MINIMUM.
 5. REPLACE SLAB-ON-GRADE WITH CONCRETE AS PER PROJECT SPECIFICATIONS AND PROVIDE SLOPED EDGE.
 6. INSTALL CONCRETE AS PER PROJECT SPECIFICATION SECTION 033000.
 7. REFER TO GENERAL NOTES AND PLANS FOR REINFORCING AND LENGTH FOR 30"± CAST IN PLACE CONCRETE FRICTION PILE.

3 SECTION
S1.1 S2.1 1- 1/2" = 1'-0"

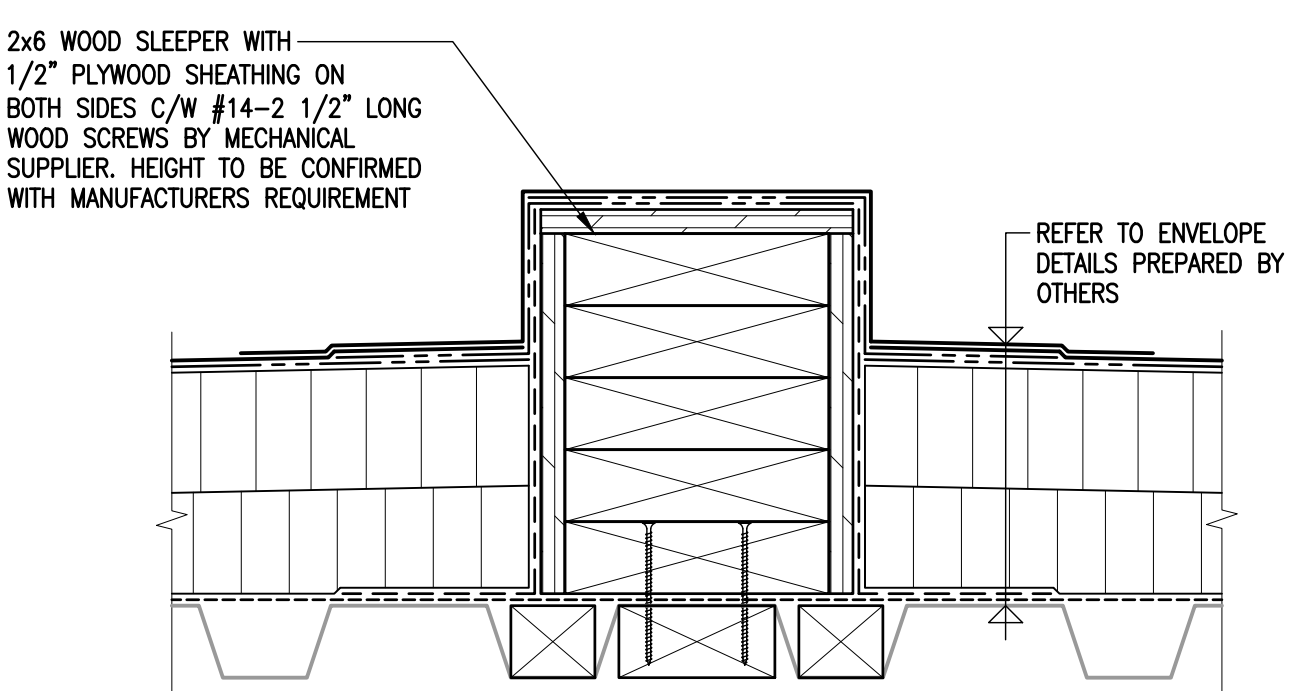
- TYPICAL CHANNEL TO EXISTING JOIST CONNECTION DETAIL
- EXISTING STEEL DECK NOT SHOWN FOR CLARITY



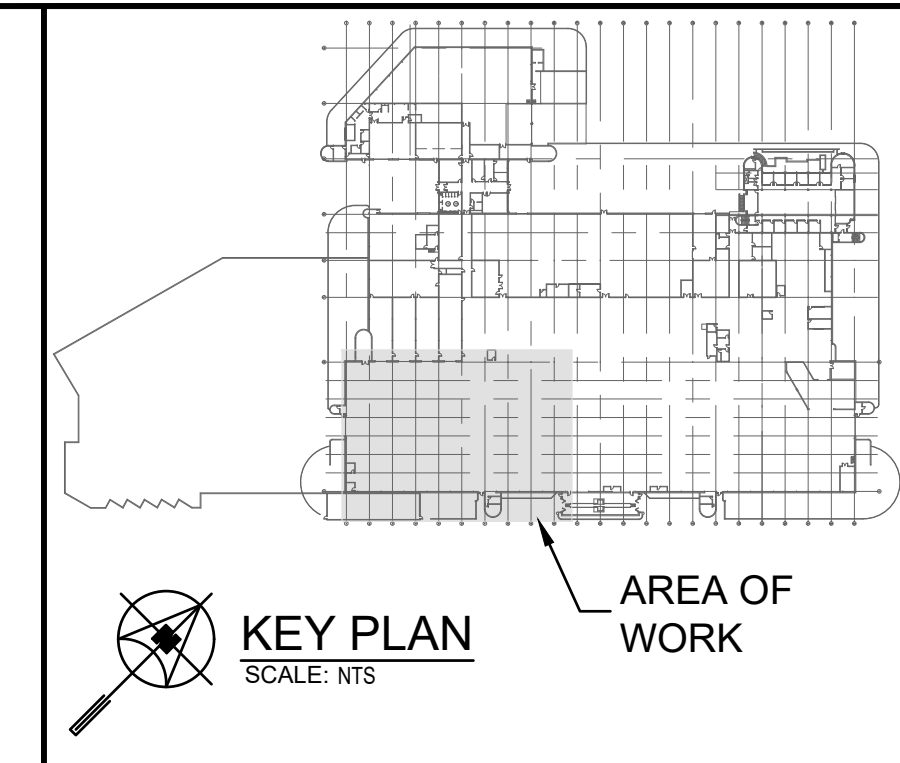
B SUPPLEMENTAL STEEL SUPPORT BELOW MECHANICAL UNITS
S2.1 S2.1 1" = 1'-0"



A SECTION DETAIL
S2.1 S2.1 1 1/2" = 1'-0"



C WOOD SLEEPER DETAIL
S2.1 S2.1 3" = 1'-0"



ENGINEERS GEOSCIENTISTS MANITOBA
Certificate of Authorization
Crosier Kilgour & Partners Ltd.
No. 235

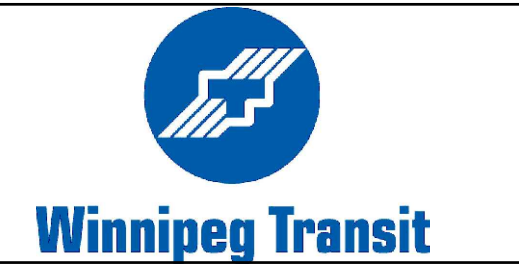
300-275 Carlton Street
Winnipeg, Manitoba R3C 5R6
T 204-943-7501
F 204-943-7507
2021-0050

Crosier Kilgour & Partners Ltd.
CONSULTING STRUCTURAL ENGINEERS

4			
3			
2			
1			
0	ISSUED FOR CONSTRUCTION	JAL	07/06/22
NO.	Description	BY	DDMMYY



SMS Engineering
20-349-01



Project Title
TRANSIT MAINTENANCE AND REPAIR BUILDING MECHANICAL UPGRADE - WEST HIGH BAY
WINNIPEG MANITOBA

Drawing Title
JOIST REINFORCEMENT

JOIST ELEVATIONS, DETAIL, AND SECTIONS

Drawn By CJMMS	Checked By AL	Approved By JAL
Scale AS NOTED	Date JUNE 2022	Project No. 20-349-01
Revision Number 0	Drawing Number S2.1	Sheet Order 2 OF 2

FILE NAME AND PATH: C:\Users\jcm\OneDrive\Documents\Projects\1 - General\05 Drawings\2022\1-000 - Transit Maintenance Bldg - West High Bay - Phase 1.dwg
LAYOUT: S2.1
LAST MODIFIED BY: jcm
DATE PLOTTED: 2022-06-07 11:48 PM