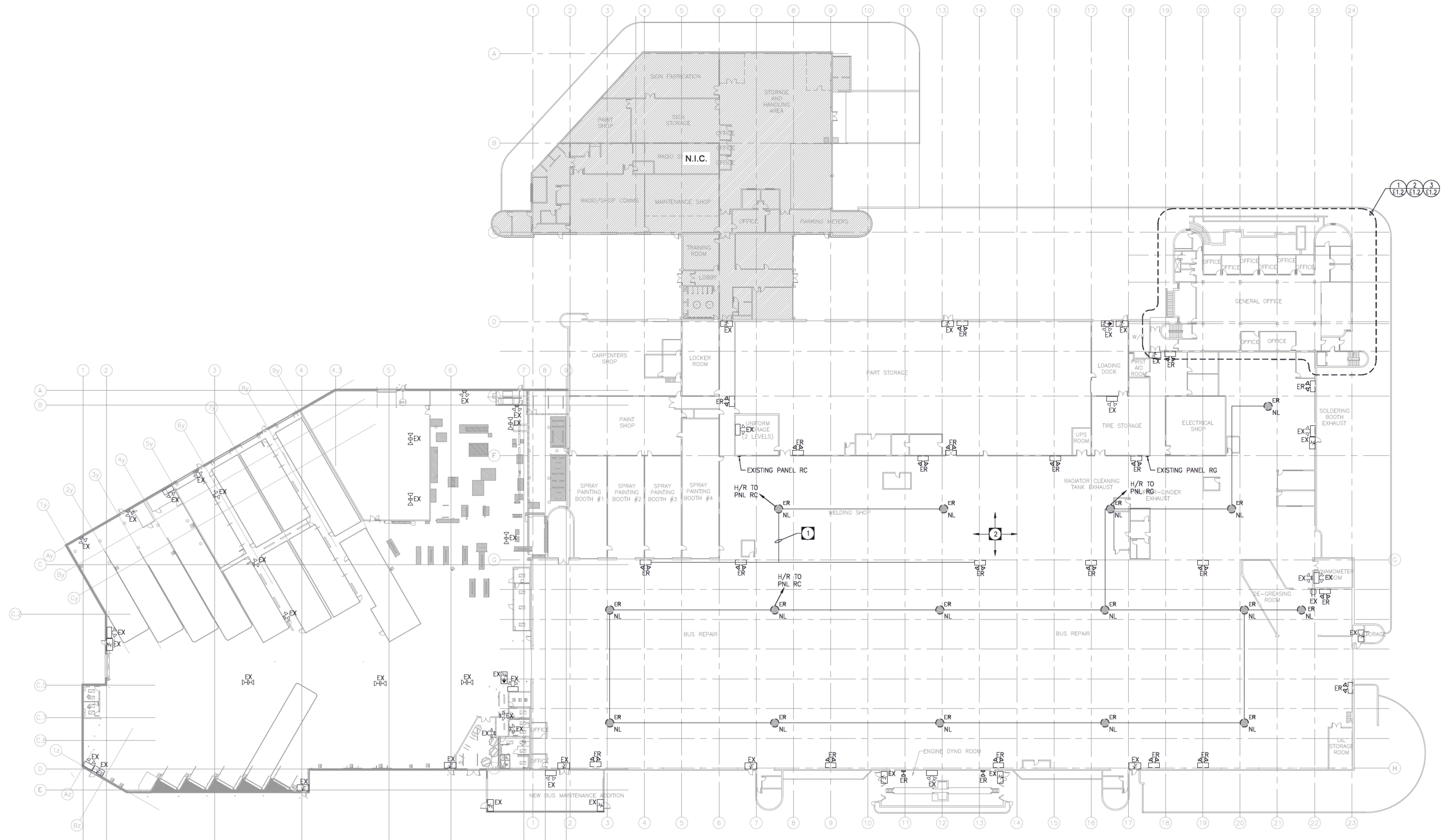


LEGEND	
⊙	SURFACE OR PENDANT LIGHT FIXTURE (F DENOTES TYPE)
□	1'x4' TROFFER (B DENOTES TYPE)
⊖/NL	LIGHT FIXTURE ON NIGHT LIGHT CIRCUIT
⊖/2-0	EMERGENCY LIGHT (REMOTE - 2 HEADS)
⊖/2-0	EXIT LIGHT C/W DIRECTIONAL ARROW (CEILING/WALL MTD)
⊖	EXIT LIGHT (BALL HANGER)
⊖	SELF CONTAINED EXIT LIGHT (CEILING MTD)
⊖	EMERGENCY BATTERY BANK UNIT C/W HEAD LIGHTS
⊖/2-0	EMERGENCY LIGHT (REMOTE - 2 HEADS)
⊖	DUPLEX RECEPTACLE
⊖	POWER PANELBOARD - SURFACE MOUNT/FLUSH MOUNT
⊖	JUNCTION BOX CEILING MOUNTED
ER	EXISTING TO BE REMOVED
EX	EXISTING TO REMAIN
R	RELOCATED EXISTING (SHOWN IN NEW LOCATION)

- DRAWING NOTES:**
- DEMOLISH EXISTING RECEPTACLES AND CONDUITS FROM EMERGENCY BATTERY BANKS BACK TO CEILING MOUNTED NIGHT LIGHT LOCATION.
 - EXISTING EMERGENCY LIGHTING FIXTURES TO BE DEMOLISHED AND NEW FIXTURE TO BE PROVIDED IN ITS PLACE, REUSE EXISTING EMERGENCY LIGHTING CONDUIT AND FIXTURE LOCATIONS PER NEW LAYOUT. REFER TO E2.1.

SITE KEY PLAN
N.T.S.



BUILDING A - MAIN FLOOR
SCALE: 1/16"=1'-0"

ISSUED FOR CONSTRUCTION		2021-09-15	JRF
NO.	REVISIONS	DATE	BY
		Project: 191529	
towereng.ca		Calgary: 403-235-2655	
		Winnipeg: 204-925-1150	
<small>These design documents are prepared solely for the use by the party with whom the design professional has entered into a contract and there are no representations of any kind made by the design professional to any party with whom the design professional has not entered into a contract. Any use of the drawing, disk or electronic data without the expressed written permission of Tower Engineering Group is strictly prohibited. The contractor is responsible to verify all dimensions with conditions on the site and report discrepancies to Tower Engineering for adjustment. All prints to be returned.</small>			
SEAL			
PROJECT	TRANSIT EMERGENCY LIGHTING 421 OSBORNE WINNIPEG, MANITOBA		
DRAWING	BUILDING A DEMOLITION PLAN		
DESIGNED:	JRF	DRAWING NO.	505-2021_DRAWING_E1.1
DRAWN:	VRR	SCALE:	AS NOTED
CHECKED:	SMM	PLOT DATE:	2021-09-15
PROJECT NO.:	191529	REVISION	R0