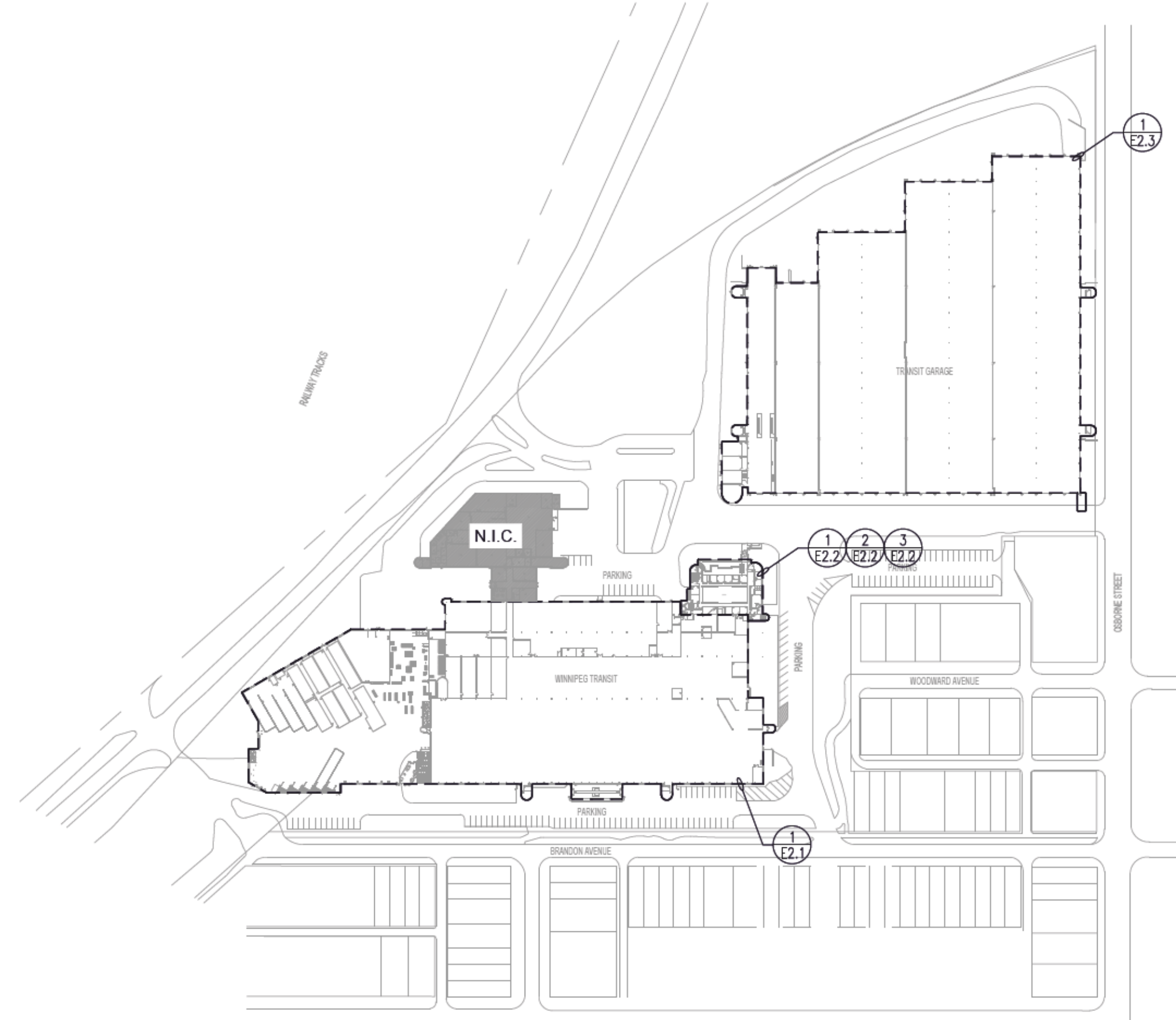
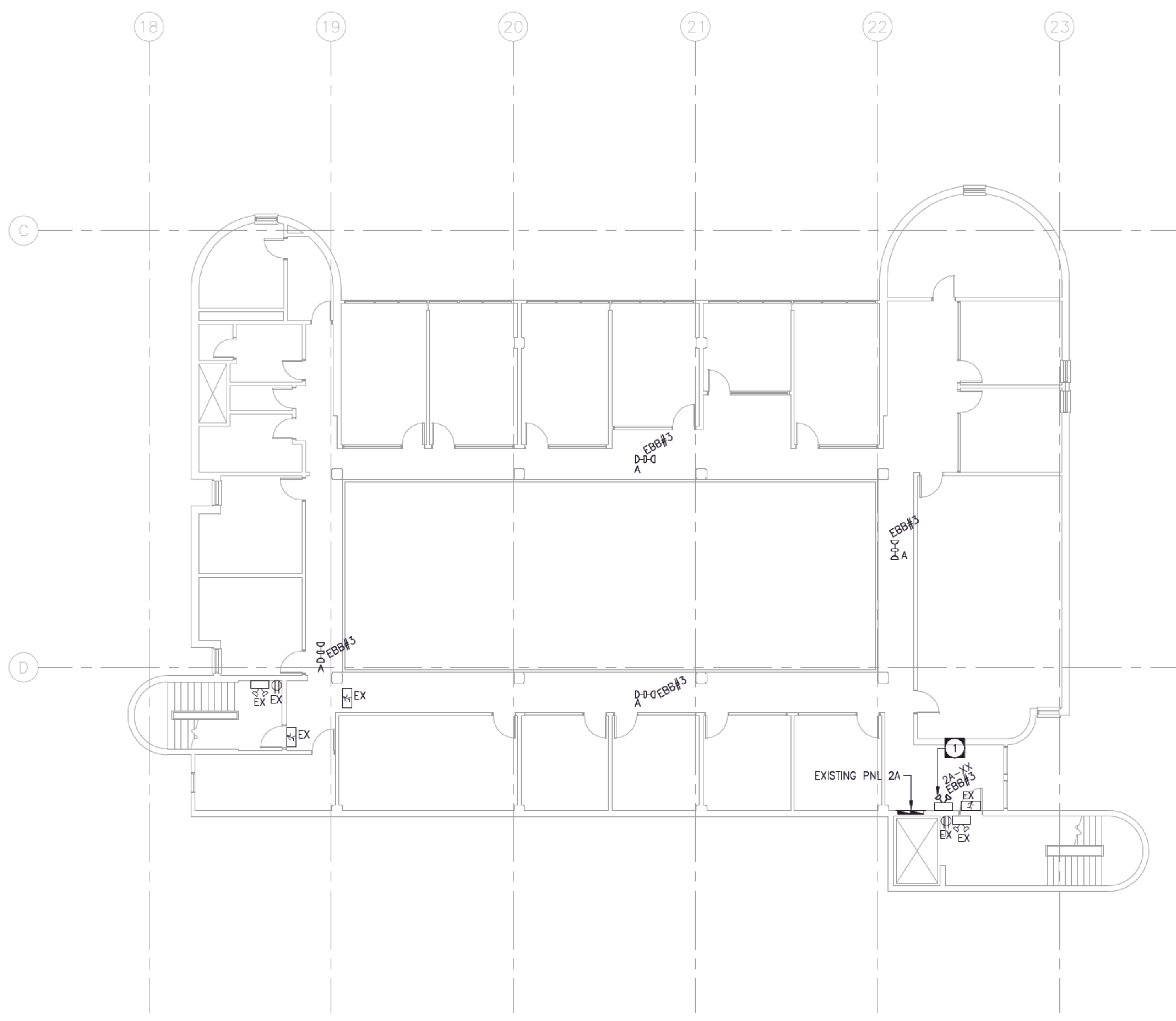


DRAWING NOTES:

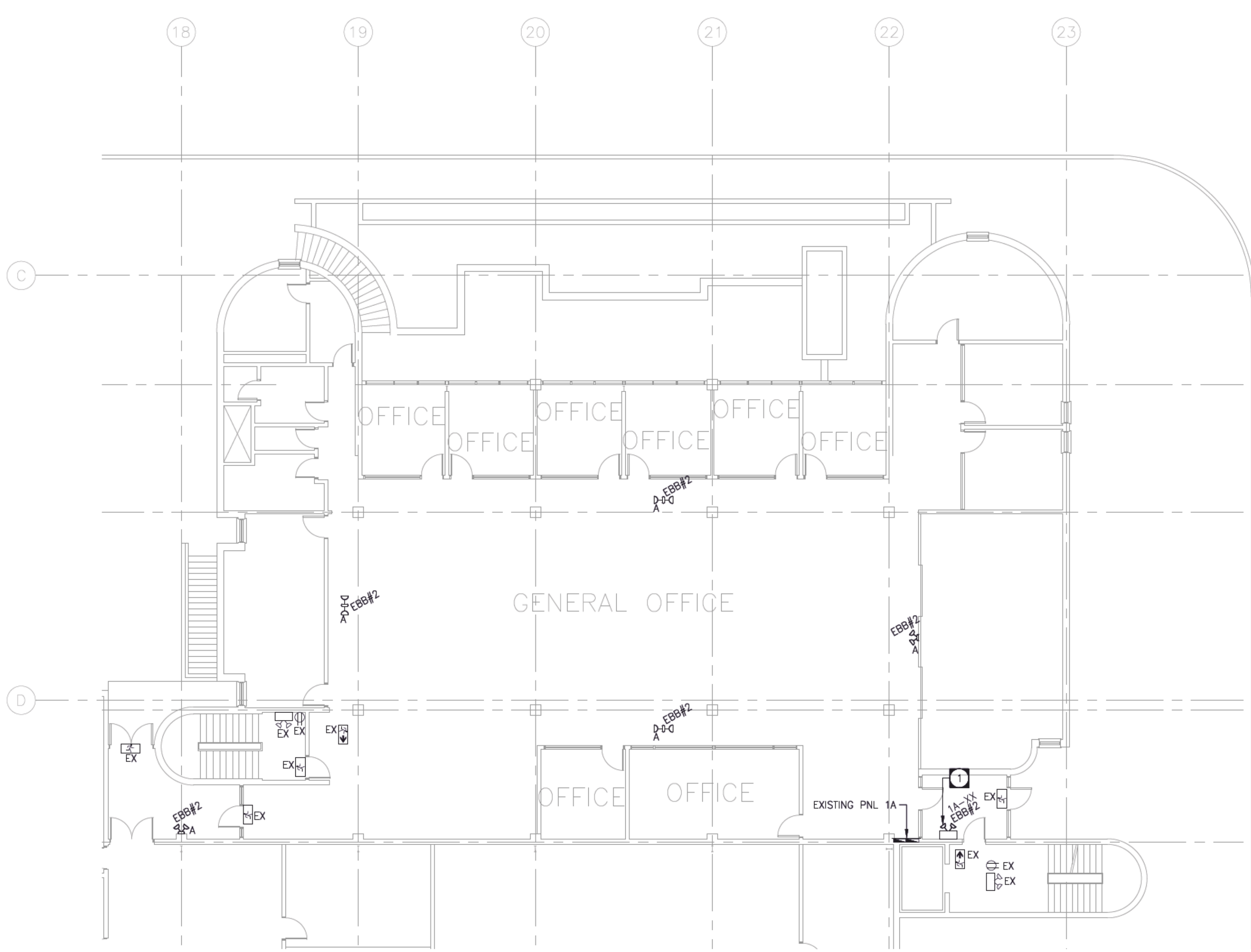
- 1 CONNECT BATTERY BANK TO LOCAL AREA LIGHTING CIRCUIT. 4 CIRCUIT VSR SHALL BE CONNECTED TO MONITOR ALL LIGHTING CIRCUITS IN THE AREA WHERE NEW EMERGENCY LIGHTING IS LOCATED. CONFIRM CIRCUITS TO MONITOR ON SITE.
- 2 CONNECT TO EXISTING BATTERY BANK. CONFIRM REQUIREMENTS AND EXISTING BATTERY BANK LOAD ON SITE.



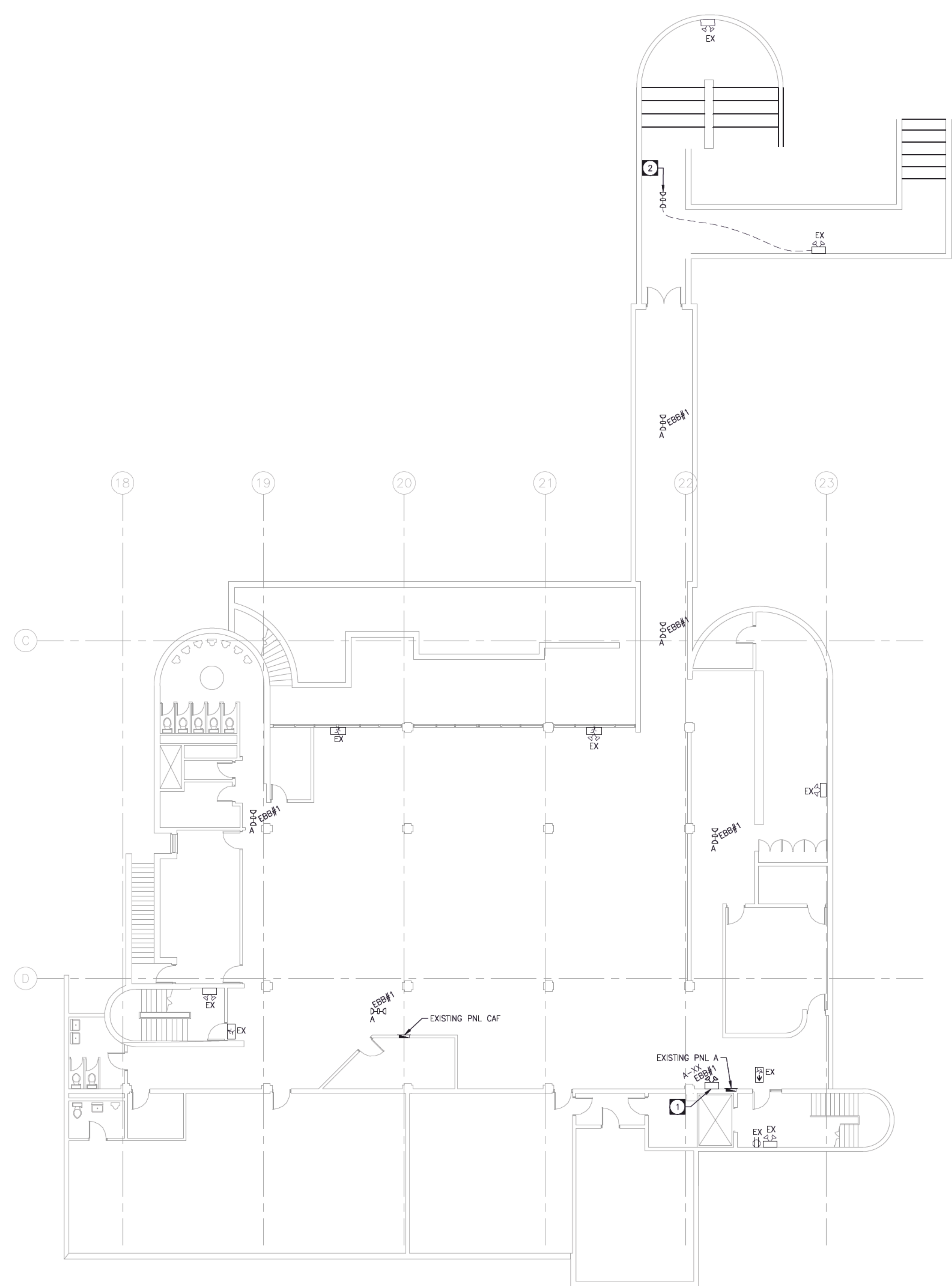
SITE KEY PLAN
N.T.S.



SECOND FLOOR
SCALE: 3/32"=1'-0"



MAIN FLOOR
SCALE: 3/32"=1'-0"



BASEMENT
SCALE: 3/32"=1'-0"

0	ISSUED FOR CONSTRUCTION	2021-09-15	JRF
NO.	REVISIONS	DATE	BY
		Project: 191529 towereng.ca Calgary: 403-235-2655 Winnipeg: 204-925-1150	
These design documents are prepared solely for the use by the party with whom the design professional has entered into a contract and there are no representations of any kind made by the design professional to any party with whom the design professional has not entered into a contract. Any use of the drawing, disk or electronic data without the expressed written permission of Tower Engineering Group is strictly prohibited. The contractor is responsible to verify all dimensions with conditions on the site and report discrepancies to Tower Engineering for adjustment. All prices to be returned.			
SEAL	SEAL		
PROJECT TRANSIT EMERGENCY LIGHTING 421 OSBORNE WINNIPEG, MANITOBA			
DRAWING BUILDING A RENOVATION PLAN			
DESIGNED:	JRF	DRAWING NO.	505-2021_DRAWING_E2.2
DRAWN:	VRR	SCALE:	AS NOTED
CHECKED:	SMM	PLOT DATE:	2021-09-15
PROJECT NO.:	191529	REVISION	R0