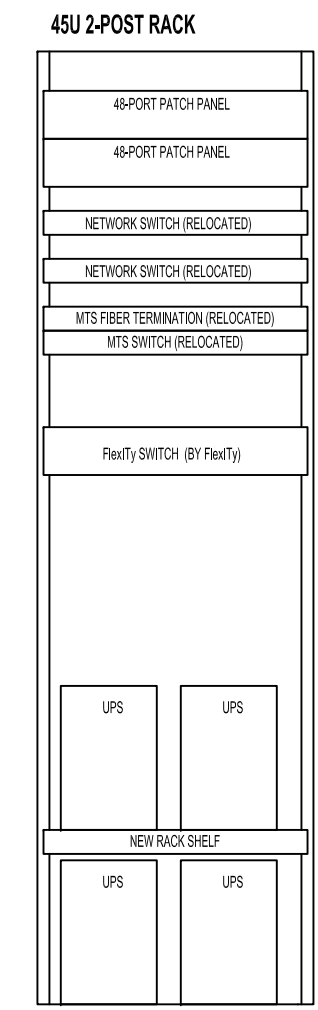


ELECTRICAL POWER & SYSTEMS RENOVATION NOTES: "X"

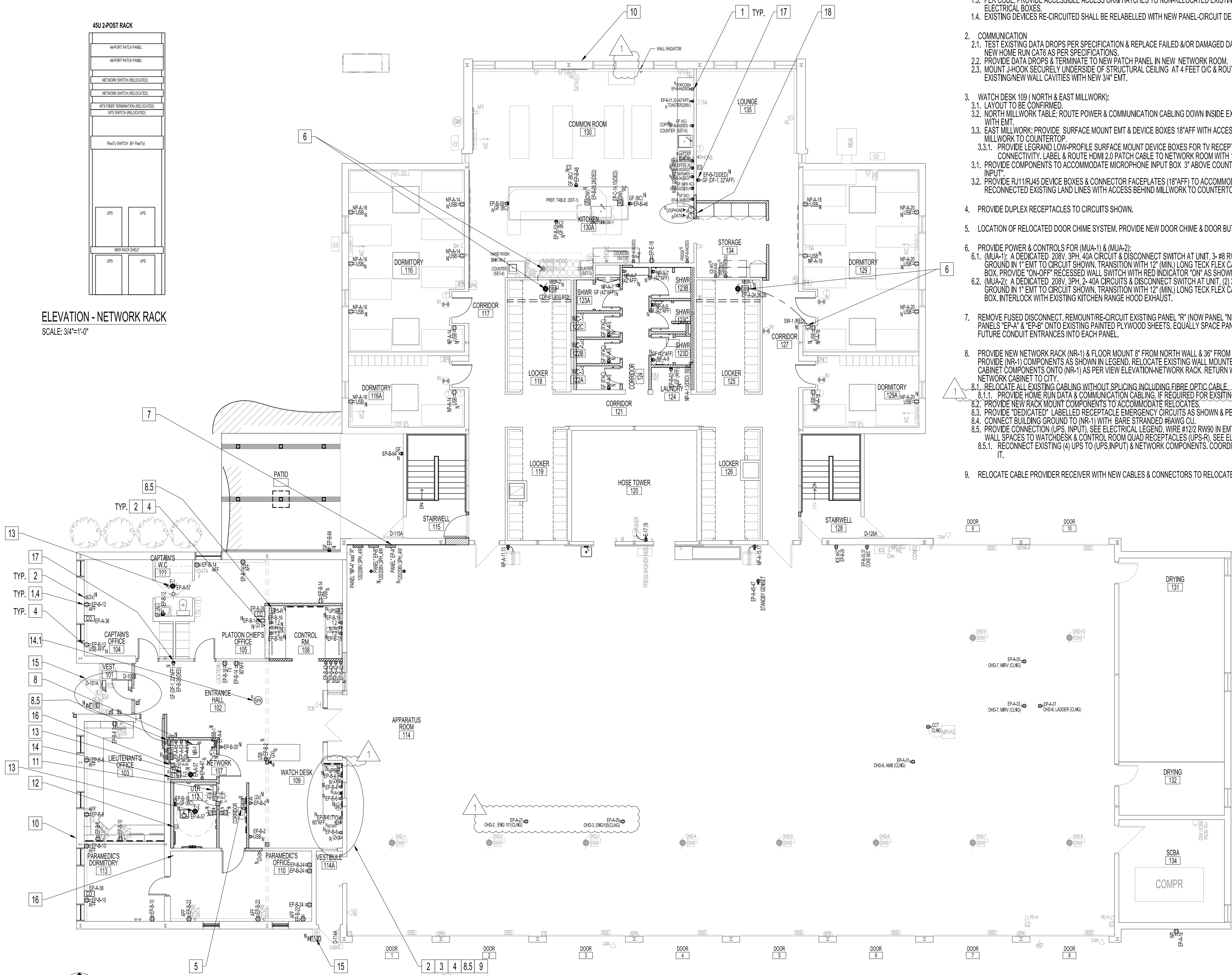
ALSO SEE NOTES & SPECIFICATIONS. ALL NEW WIRING & CABLING SHALL BE CONCEALED BEHIND NEW DRYWALL FOR FINISH SPACES (EG., OFFICES, DORMS, CORRIDORS...).

- 1. POWER
1.1. PROVIDE JUNCTION BOX (JB) WITH CIRCUITS SHOWN IN EMT TO PANEL. MOUNTED (JB) SECURELY TO STRUCTURE WITH NEW EMT.
1.2. PROVIDE CIRCUITS FOR RECEPTACLES SHOWN. EACH APPLIANCE DUPLEX RECEPTACLE SHALL HAVE ITS OWN DEDICATED CIRCUIT AS PER PANEL SCHEDULE DRAWINGS.
1.3. PER CODE, PROVIDE ACCESSIBLE ACCESS OR HATCHES TO NON-RELOCATED EXISTING (JB) OR ELECTRICAL BOXES.
1.4. EXISTING DEVICES RE-CIRCUITED SHALL BE RELABELLED WITH NEW PANEL-CIRCUIT DESIGNATIONS.
2. COMMUNICATION
2.1. TEST EXISTING DATA DROPS PER SPECIFICATION & REPLACE FAILED &/OR DAMAGED DATA DROPS WITH NEW HOME RUN CAT6 AS PER SPECIFICATIONS.
2.2. PROVIDE DATA DROPS & TERMINATE TO NEW PATCH PANEL IN NEW NETWORK ROOM.
2.3. MOUNT J-HOOK SECURELY UNDERSIDE OF STRUCTURAL CEILING AT 4 FEET O/C & ROUTE DOWN THROUGH EXISTING/NEW WALL CAVITIES WITH NEW 3/4" EMT.
3. WATCH DESK 109 (NORTH & EAST MILLWORK):
3.1. LAYOUT TO BE CONFIRMED.
3.2. NORTH MILLWORK TABLE: ROUTE POWER & COMMUNICATION CABLING DOWN INSIDE EXISTING COLUMN WITH EMT.
3.3. EAST MILLWORK: PROVIDE SURFACE MOUNT EMT & DEVICE BOXES 18" AFF WITH ACCESS BEHIND MILLWORK TO COUNTERTOP.
3.3.1. PROVIDE LEGRAND LOW-PROFILE SURFACE MOUNT DEVICE BOXES FOR TV RECEPTACLE AND HDMI 2.0 CONNECTIVITY. LABEL & ROUTE HDMI 2.0 PATCH CABLE TO NETWORK ROOM WITH 10 FEET COIL.
3.1. PROVIDE COMPONENTS TO ACCOMMODATE MICROPHONE INPUT BOX 3" ABOVE COUNTER. LABEL "MIC INPUT".
3.2. PROVIDE RJ11/RJ45 DEVICE BOXES & CONNECTOR FACEPLATES (18" AFF) TO ACCOMMODATE (3 OR 4) RECONNECTED EXISTING LAND LINES WITH ACCESS BEHIND MILLWORK TO COUNTERTOP.
4. PROVIDE DUPLEX RECEPTACLES TO CIRCUITS SHOWN.
5. LOCATION OF RELOCATED DOOR CHIME SYSTEM. PROVIDE NEW DOOR CHIME & DOOR BUTTON.
6. PROVIDE POWER & CONTROLS FOR (MUA-1) & (MUA-2):
6.1. (MUA-1): A DEDICATED 208V, 3PH, 40A CIRCUIT & DISCONNECT SWITCH AT UNIT, 3-#8 RW90 WIRES & GROUND IN 1" EMT TO CIRCUIT SHOWN. TRANSITION WITH 12" (MIN.) LONG TECK FLEX CABLE TO (MUA-1) BOX. PROVIDE "ON-OFF" RECESSED WALL SWITCH WITH RED INDICATOR "ON" AS SHOWN.
6.2. (MUA-2): A DEDICATED 208V, 3PH, 2-40A CIRCUITS & DISCONNECT SWITCH AT UNIT, (2) 3-#8 RW90 WIRES & GROUND IN 1" EMT TO CIRCUIT SHOWN. TRANSITION WITH 12" (MIN.) LONG TECK FLEX CABLE TO (MUA-2) BOX. INTERLOCK WITH EXISTING KITCHEN RANGE HOOD EXHAUST.
7. REMOVE FUSED DISCONNECT. REMOUNT/RE-CIRCUIT EXISTING PANEL "R" (NOW PANEL "NP-A") & MOUNT NEW PANELS "EP-A" & "EP-B" ONTO EXISTING PAINTED PLYWOOD SHEETS. EQUALLY SPACE PANELS TO ALLOW FOR FUTURE CONDUIT ENTRANCES INTO EACH PANEL.
8. PROVIDE NEW NETWORK RACK (NR-1) & FLOOR MOUNT 8" FROM NORTH WALL & 36" FROM WEST WALL. PROVIDE (NR-1) COMPONENTS AS SHOWN IN LEGEND. RELOCATE EXISTING WALL MOUNTED NETWORK CABINET COMPONENTS ONTO (NR-1) AS PER VIEW ELEVATION-NETWORK RACK. RETURN WALL MOUNT NETWORK CABINET TO CITY.
8.1. RELOCATE ALL EXISTING CABLING WITHOUT SPLICING INCLUDING FIBRE OPTIC CABLE.
8.1.1. PROVIDE HOME RUN DATA & COMMUNICATION CABLING, IF REQUIRED FOR EXISTING.
8.2. PROVIDE NEW RACK MOUNT COMPONENTS TO ACCOMMODATE RELOCATES.
8.3. PROVIDE "DEDICATED" LABELLED RECEPTACLE EMERGENCY CIRCUITS AS SHOWN & PER SPECIFICATIONS.
8.4. CONNECT BUILDING GROUND TO (NR-1) WITH BARE STRANDED #6AWG CU.
8.5. PROVIDE CONNECTION (UPS, INPUT). SEE ELECTRICAL LEGEND. WIRE #12/2 RW90 IN EMT VIA CEILING & WALL SPACES TO WATCHDESK & CONTROL ROOM QUAD RECEPTACLES (UPS-R). SEE ELECTRICAL LEGEND.
8.5.1. RECONNECT EXISTING (4) UPS TO (UPS, INPUT) & NETWORK COMPONENTS. COORDINATE WITH WFPS IT.
9. RELOCATE CABLE PROVIDER RECEIVER WITH NEW CABLES & CONNECTORS TO RELOCATED TELEVISION.

- GENERAL NOTES: REFER TO DRAWING E1.
1. ITEMS RELATING TO PROJECT 2019-150, ELECTRICAL SERVICE UPGRADE AND NEW EMERGENCY GENERATOR HAVE BEEN REMOVED.
2. EXISTING RECEPTACLES/COMPONENTS WITH CIRCUITS TO PANELS "NP-A", "EP-A" & "EP-B" ARE IN SCOPE OF THIS TENDER.
3. EQUIPMENT/COMPONENTS ID WITH "N" ARE IN SCOPE OF THIS TENDER.



ELEVATION - NETWORK RACK SCALE: 3/4\"/>



MAIN FLOOR PLAN - RENOVATION SCALE: 1/8\"/>

Table with 4 columns: No., REVISION/DESCRIPTION, BY, DATE. Contains 3 rows of revision information.



Approval table with columns: DRAWN, CHECKED, DESIGNED, APPROVED. Includes dates and user names.

THE CITY OF WINNIPEG PLANNING, PROPERTY AND DEVELOPMENT DEPARTMENT MUNICIPAL ACCOMMODATIONS DIVISION 3-65 GARRY STREET, R3C 4K4

PROJECT: WINNIPEG FIRE PARAMEDIC SERVICES FIRE STATION #1 INTERIOR RENOVATIONS 65 ELLEN STREET BID OPP: 535-2021

SHEET TITLE: MAIN FLOOR PLAN ELECTRICAL - RENOVATION POWER AND SYSTEMS

Table with 3 columns: SCALE, PROJECT No, SHEET No. Values: AS SHOWN, 2019-075, E4.0-R1