

ELECTRICAL LIGHTING RENOVATION NOTES: "X"

- ALSO SEE NOTES & SPECIFICATIONS.
ALL WIRING & CABLING IN CEILING SPACE SHALL BE PLENUM RATED AS PER LATEST CEC.
- AS SHOWN, REUSE EXISTING LUMINAIRES OR IF DAMAGED/NON-OPERATING PROVIDE NEW OF SAME. WIRE TO CIRCUITS SHOWN.
 - PROVIDE 0-10V WIRING FOR DIMMER SWITCHES.
 - PROVIDE WIRING TO (OS) & OVERRIDE TO "ON" WIRED PARALLEL WITH (OS).
 - WIRE NIGHT LIGHT (NL) LUMINAIRES TO PANEL "EP-B" EMERGENCY/NIGHT LIGHT CIRCUIT.
 - COMBINATION SMOKE/CARBON MONOXIDE DETECTORS (PECO), SMOKE DETECTORS & HEAT DETECTORS ARE 120V WITH BATTERY BACKUP. INTERCONNECT ALL TO LOCALLY ALARM WITH REQUIRED CONTROLS. CEILING MOUNTED 18" MINIMUM CLEARANCE FROM VENTS & COMPONENTS.
 - PROVIDE EMERGENCY BATTERY BANK 2-HEAD UNIT WITH NEW INTEGRAL ZONE SENSING CONTROL PANEL/BATTERY/2-LAMP UNIT (EBB-1) (EBB-2). WIRE TO MONITOR LIGHTING CIRCUIT IN AREA FOR EACH ZONE. WIRE TO NEW RUNNING MAN EXIT SIGNS, (COMBO UNITS) & 2-HEAD REMOTE EMERGENCY LAMPS.
 - RELOCATE LUMINAIRES TO CLEAR NEW BULK HEAD.
 - RELOCATE SPEAKER, EXTEND WIRING IF REQUIRED & TEST.
 - RELAMP &/OR REPAIR EXISTING PATHWAY LIGHT. IF NOT REPAIRABLE REPLACE WITH TYPE SHOWN WITH ADJACENT DIMMER SWITCH.
 - PROVIDE CEILING MOUNTED HEAT DETECTORS. MOUNT PER CODE. SPEC SHOWN IN DRAWING E1-R1, ELECTRICAL LEGEND.
 - REPLACE BASEMENT (4) EMERGENCY EXIT RED SIGNS WITH RUNNING MAN.

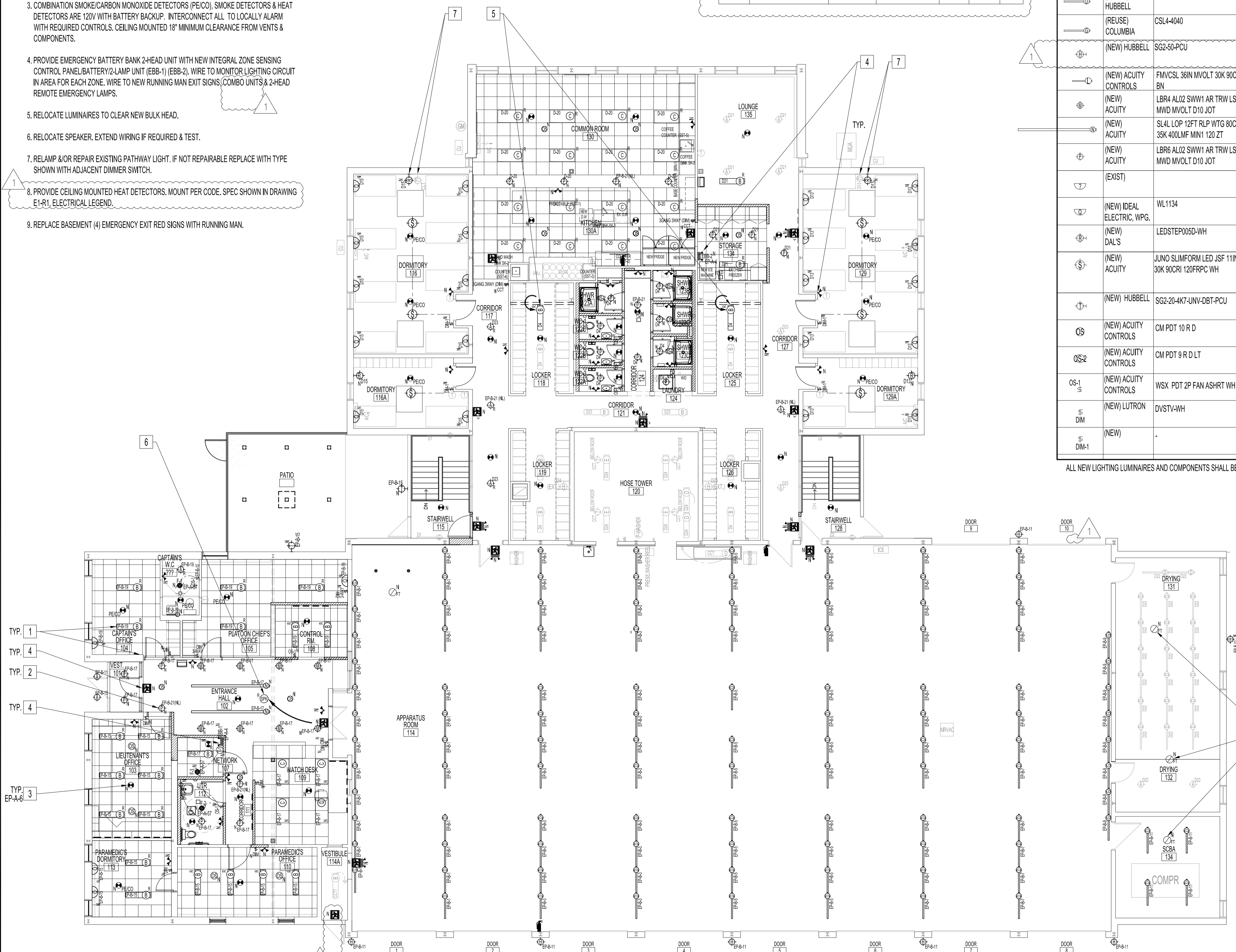
GENERAL NOTES:

- REFER TO DRAWING E1.
- ITEMS RELATING TO PROJECT 2019-150, ELECTRICAL SERVICE UPGRADE AND NEW EMERGENCY GENERATOR HAVE BEEN REMOVED.
 - EXISTING RECEPTACLES/COMPONENTS WITH CIRCUITS TO PANELS "N-A", "EP-A" & "EP-B" ARE IN SCOPE OF THIS TENDER.
 - EQUIPMENT/COMPONENTS ID WITH "N" ARE IN SCOPE OF THIS TENDER.

EMERGENCY SIGN AND LIGHTING SCHEDULE					
TAG	DESCRIPTION	MANUFACTURER	CATALOG No.	VOLTS	BRANCH CIRCUIT
EP-B-1	INTEGRAL ZONE SENSING CONTROL PANEL BATTERY UNIT W/ 2 LAMP SHELF	AMILITE	EBST-2NSC-12V-200-2MB-LED-120-AT-ZTS-ZPL	120V - 12V	AS SHOWN
EP-B-2	PLASTIC COMBO RUNNING MAN, 120 MIN DURATION 2x2.4W LED	AMILITE	WAY2GO-CRPPSP-2	120/24V, 277	AS SHOWN
EP-B-3	RUNNING MAN SIGN	AMILITE	RPST-4J4-WHT	120/24VAC	AS SHOWN
EP-B-4	DOUBLE REMOTE LAMP	AMILITE	RMNB-2-12-3-7L-WHT	12V	AS SHOWN

LUMINAIRE, SWITCH & LIGHTING CONTROL SCHEDULE				
TYPE	MANUFACTURER	CATALOGUE No.	LAMP	DESCRIPTION
(B)	(REUSE) PRESCOLITE	LB6LEDA 10L	LED 1000 LUMENS, 3500K	6" LED DOWN DOWN LIGHT MODULE, DIM 15%, 12W, 0.1A, 120V. INCANDESCENT LINE VOLTAGE DIMMER NEEDS 40W MIN. LOAD. REFER TO DRAWING E1.
(B)	(REUSE) COLUMBIA	CFP14-4040	LED 4000 LUMENS, 4000K	1' x 4' LED FLAT PANEL, 0-10V DIMMING, 120V
(C)	(REUSE) COLUMBIA	CFP24-4140	LED 4100 LUMENS, 4000K	2' x 4' LED FLAT PANEL, 0-10V DIMMING, 120V
(D)	(REUSE) HUBBELL	LXEM4-50ML-RFA-EDU-SSL	LED 5306 LUMENS, 5000K	4' GASKETED FIBERGLASS LED, 0-10V DIMMING, 120V
(D)	(REUSE) COLUMBIA	CSL4-4040	LED 4517 LUMENS	4' x 4' STRIP, 0-10V DIMMING, 120V
(D)	(NEW) HUBBELL	SG2-50-PCU	LED 5548 LUMENS, 5000K	WALL/FLOOD, 70 CRI, BUTTON PHOTO CONTROL, 120-277V
(D)	(NEW) ACUCITY CONTROLS	FMVCSL 36IN MVOLT 30K 90CRI BN	LED 1900 LUMENS, 3000K	VANITY LED, 36" LONG, USE WITH NON-DIMMABLE SWITCHES, WHITE ACRYLIC DIFFUSER WITH BRUSHED NICKEL HOUSING, 120-277V
(D)	(NEW) ACUCITY	LBRA AL02 SWW1 AR TRW LSS MWD MVOLT D10 JOT	1000/1500/2000 LM SW, 3000-5000K	4" LED DOWN LIGHT, ADJ. LUMENS, SWITCHABLE CCT, CLEAR REFLECTOR COLOUR, WHITE PAINTED FLANGE, SEMI-SPECULAR REFLECTOR FINISH, MEDIUM WIDE DISTR., MVOLT 120V-277V, MIN DIMMING 10%, DRIVER FOR USE WITH JOT, WIRELESS ROOM CONTROL WITH "JUST ONE TOUCH" PAIRING, SET TO 1000LM, 3500K
(D)	(NEW) ACUCITY	SLAL LOP 12FT RLP WTG 80CRI 35K 400LMF MIN1 120 ZT	LED 400 LUMENS / FT 3500K	12' LINEAR RECESSED REGRESSED LENS WITH CEILING TRIM, 0-10V DIMMING TO 1%, 120V
(D)	(NEW) ACUCITY	LBRA AL02 SWW1 AR TRW LSS MWD MVOLT D10 JOT	1000/1500/2000 LM SW, 3000-5000K	6" LED DOWN LIGHT, ADJ. LUMENS, SWITCHABLE CCT, CLEAR REFLECTOR COLOUR, WHITE PAINTED FLANGE, SEMI-SPECULAR REFLECTOR FINISH, MEDIUM WIDE DISTR., MVOLT 120V-277V, MIN DIMMING 10%, DRIVER FOR USE WITH JOT, WIRELESS ROOM CONTROL WITH "JUST ONE TOUCH" PAIRING, SET TO 1500LM, 3500K
(D)	(EXIST)			WALL SCONCE
(D)	(NEW) IDEAL ELECTRIC, WPG.	WL1134	LED ? LUMENS, 2800-3200K	WALL LAMP WITH USB CHARGER, LED 1x5W (LED SOURCE AND DRIVER INCLUDED), L 250mmW140mmH115mm
(D)	(NEW) DAL'S	LEDSTEP005D-WH	LED 285 LM, 100LM DELIVERED 3000K	4.72"x2.875" LED STEP LIGHT, DIMMABLE, 3 WATTS, 120V, WHITE
(D)	(NEW) ACUCITY	JUNO SLIMFORM LED JSF 11IN 30K 90CRI 120FRPC WH	LED 1300 LUMENS, 3000K	SURFACE MOUNT DOWNLIGHT, 11" DIA., J-BOX INSTALLATION, DEDICATED 120V FORWARD REVERSE PHASE DIMMING, WHITE
(D)	(NEW) HUBBELL	SG2-20-4K7-UNV-DBT-PCU	LED 2310 LUMENS, 4000K	SLENDER WALLPACK, DARK BRONZE, 20W, 120-277V, UNIVERSAL BUTTON PHOTO CONTROL
(OS)	(NEW) ACUCITY CONTROLS	CM PDT 10 R D		CEILING MOUNT OCCUPANCY SENSOR, DUAL TECHNOLOGY (PIR/MICROPHONICS), LARGE MOTION 360 DEGREES, LOW VOLTAGE RELAY, OCCUPANCY CONTROLLED DIMMING
(OS-2)	(NEW) ACUCITY CONTROLS	CM PDT 9 R D LT		CEILING MOUNT OCCUPANCY SENSOR, DUAL TECHNOLOGY (PIR/MICROPHONICS), SMALL MOTION 360 DEGREES, LOW VOLTAGE RELAY, OCCUPANCY CONTROLLED DIMMING, LOW TEMP/HIGH HUMIDITY
(OS-1)	(NEW) ACUCITY CONTROLS	WSX PDT 2P FAN ASHRT WH LT		OCCUPANCY SENSOR WALL SWITCH SENSOR WITH FAN, PASSIVE INFRARED/MICROPHONICS, POLE 1-LIGHTS, POLE 2- FAN, MIN. FAN RUN TIME AS PER ASHRAE 62.2, LOW TEMP/HIGH HUMIDITY, 120V, WHITE
(DIM)	(NEW) LUTRON	DVSTV-WH		DIMMING SWITCH, 0-10V, 120-277V, 1-POLE/3WAY, 8A LOAD SWITCHING CAPACITY, 50 mA 0-10V SINK CAPACITY, WHITE
(DIM-1)	(NEW)			DIMMING SWITCH, 120V FORWARD REVERSE PHASE DIMMING TO SUIT ACUCITY JUNO SLIMFORM LED JSF 11IN 35K 90CRI 120FRPC WH

ALL NEW LIGHTING LUMINAIRES AND COMPONENTS SHALL BE MANITOBA HYDRO POWER SMART APPROVED.



No.	REVISION/DESCRIPTION	BY	DATE
1	ISSUED FOR ADDENDUM 3, ADDED TYPE "H" DELETED EMERG. DUAL HEAD.	DTA	2021.12.03
0	ISSUED FOR CONSTRUCTION	DTA	2021.10.26
000	ISSUED FOR CLASS 3 ESTIMATE	DTA	2021.06.02

SEAL

DRAWN DATE	CHECKED USER	DESIGNED DATE	APPROVED
2021.06.31			

THE CITY OF WINNIPEG
PLANNING, PROPERTY AND DEVELOPMENT DEPARTMENT
MUNICIPAL ACCOMMODATIONS DIVISION
3-65 GARRY STREET, R3C 4K4

PROJECT
WINNIPEG FIRE PARAMEDIC SERVICES
FIRE STATION #1
INTERIOR RENOVATIONS
65 ELLEN STREET BID OPP: 535-2021

SHEET TITLE
MAIN FLOOR REFLECTED CEILING PLAN
ELECTRICAL - RENOVATION
LIGHTING, FIRE PREVENTION AND LIFE SAFETY

SCALE	PROJECT No:	SHEET No:
AS SHOWN	2019-075	E5-R1