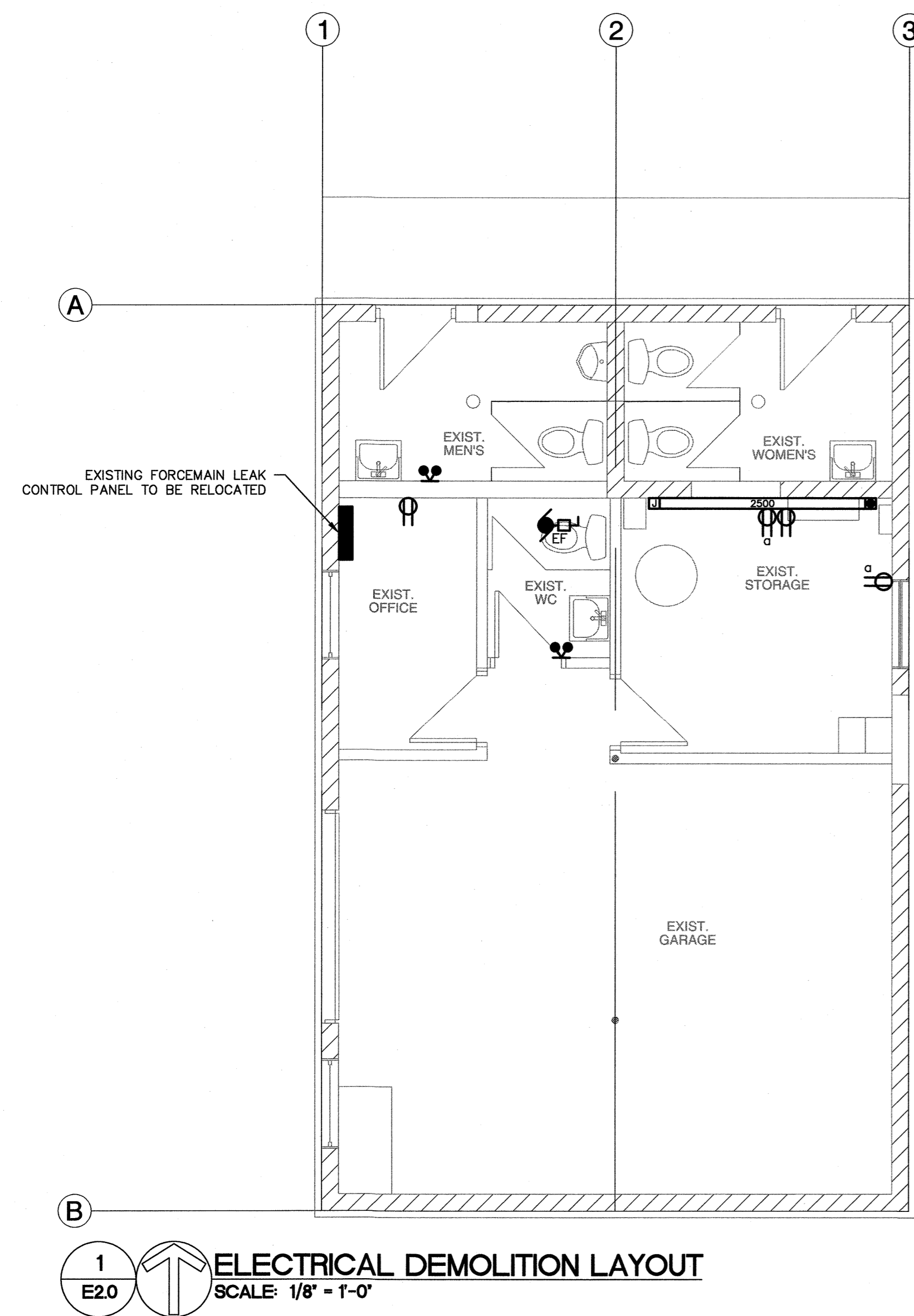
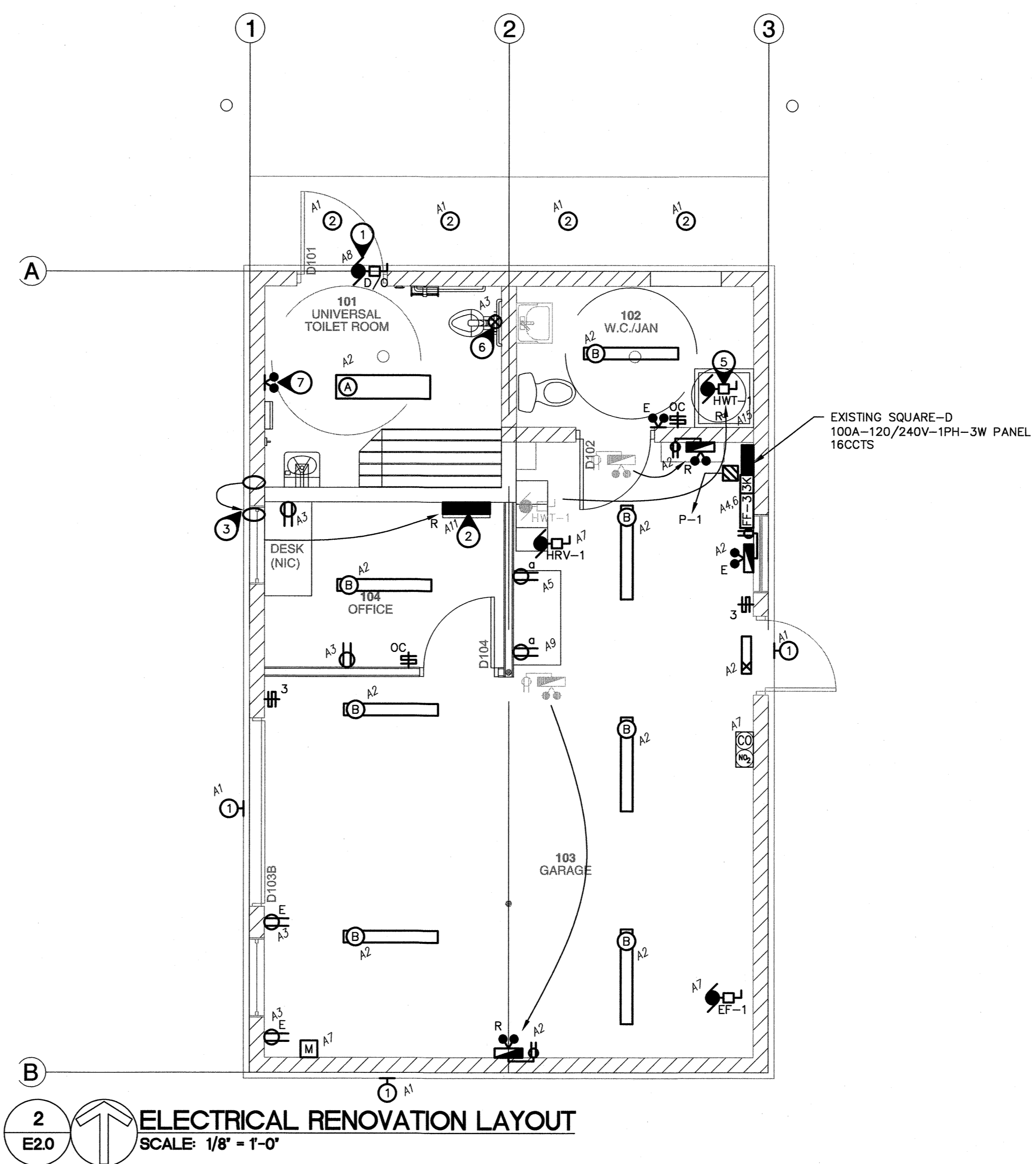


ALL DRAWINGS AND SPECIFICATIONS ARE THE PROPERTY OF THE CONSULTANT. NO REPRODUCTIONS MAY BE MADE WITHOUT THE CONSENT OF THE CONSULTANT AND ALL REPRODUCTIONS MUST BEAR THE NAME OF THE CONSULTANT. THE CONTRACTOR SHALL VERIFY ALL DIMENSIONS, DATUMS AND LEVELS NOTED ON THE DRAWINGS WITH THE CONDITIONS ON SITE AND SHALL BE RESPONSIBLE FOR REPORTING ANY ERRORS OR OMISSIONS TO THE ENGINEER FOR ADJUSTMENTS. THIS DRAWING SHALL NOT BE SCALED.



1
E2.0
ELECTRICAL DEMOLITION LAYOUT
SCALE: 1/8" = 1'-0"



2
E2.0
ELECTRICAL RENOVATION LAYOUT
SCALE: 1/8" = 1'-0"

DEMOLITION NOTES

1. ALL ITEMS REQUIRED TO BE DEMOLISHED ARE NOT NECESSARILY SHOWN. THOSE INDICATED ARE FOR REFERENCE ONLY. ALL ITEMS INTERFERING WITH NEW CONSTRUCTION SHALL BE REMOVED AT NO ADDITIONAL COST.
2. ALL EXISTING LIGHTING IS TO BE REMOVED. DISPOSE OF IN AN APPROVED MANNER.

MOTOR SCHEDULE

NO.	DESCRIPTION	LOCATION	VOLTAGE	HP/W/MCA	C.B.	COND.	STARTER	NOTES
P-1	GRINDER PUMP	EXISTING SEWAGE TANK	240V-1PH	2HP	30A-2P	#10	MAGNETIC	1,2
HRV-1	HEAT RECOVERY VENT.	MAINTENANCE AREA	120V-1PH	FRAC.	15A-1P	#12	-	1
EF-1	EXHAUST FAN	GARAGE 103	120V-1PH	FRAC.	15A-1P	#12	-	1

SPECIFIC NOTES
 1. WIRE AND CONNECT AS REQUIRED. REFER TO MECHANICAL.
 2. MAGNETIC STARTER BY ELECTRICAL CONTRACTOR.
 3. MANUAL STARTER BY ELECTRICAL CONTRACTOR.
 4. COORDINATE INSTALLATION OF PATHWAYS TO PIT FOR SUMP PUMP WIRING.

GENERAL NOTES
 A. MANUAL STARTERS TO BE C/W OVERCURRENT PROTECTION.
 B. ALL DISCONNECT SWITCHES TO BE SUPPLIED BY ELECTRICAL CONTRACTOR.
 C. ELECTRICAL CONTRACTOR TO PROVIDE CIRCUIT BREAKERS AND WIRING ACCORDING TO THE FINAL NAMEPLATES OF ALL THE MECHANICAL EQUIPMENT.
 D. ALL LOW VOLTAGE CONTROL WIRING BY MECHANICAL CONTRACTOR.
 E. ALL LINE VOLTAGE CONTROL WIRING BY ELECTRICAL CONTRACTOR - REFER TO MECHANICAL SECTION. CO-ORDINATE EXACT REQUIREMENTS WITH MECHANICAL CONTRACTOR.

LUMINAIRE SCHEDULE

TYPE	DESCRIPTION	MOUNTING	CATALOG NUMBER	LAMPS
A	VANDAL RESISTANT LINEAR LED FIXTURE C/W OCCUPANCY SENSOR	SURFACE MOUNTED	LUMINAIRE LED VPF44-25W 4000K CP OCCBT	27W LED
B	4' LED STRIP LIGHT	CHAIN SUSPENDED	LITHONIA TLZLN-L48-5000LM-FST-MVOLT-40K-80CRI C/W HC36 HANGER CHAIN	34W LED
1	EXTERIOR WALL PACK LED	WALL MOUNTED	LITHONIA DSXWJ LED 10C-700-40K-T2M-120	27W LED
2	6" LED DOWNLIGHT	RECESSED IN SOFFIT	GOTHAM EVO6VR 40/45 AR MWD 173 MVOLT E210 DNA	10W LED

LUMINAIRE SCHEDULE NOTES:
 1. UNLESS OTHERWISE NOTED, ALL LEDS TO BE 4000K & 80 CRI.
 2. PROVIDE PHOTOCELL CONTROL FOR ALL OUTDOOR LUMINAIRES.

HEATING SCHEDULE

TYPE	WATTS	VOLTAGE	DESCRIPTION	MANUFACTURER	CATALOGUE NO.	NOTES
FF-3	3000	240	FORCE FLOW	OUELLET	OAC03000-T	2

SPECIFIC HEATING NOTES:
 1. C/W BUILT-IN THERMOSTAT OR WIRED TO REMOTE THERMOSTAT AS SHOWN ON DRAWINGS.
 2. C/W BUILT-IN THERMOSTAT UNLESS OTHERWISE INDICATED. CONFIRM SURFACE/RECESSED WITH G.C. AND PROVIDE SURFACE TRIM KIT IF REQUIRED.
 3. C/W BUILT-IN THERMOSTAT. MOUNT SECURELY WHERE INDICATED TO THE SATISFACTION OF THE ENGINEER.

GENERAL HEATING NOTES:
 A. VOLTAGE TO BE AS INDICATED ABOVE UNLESS OTHERWISE NOTED ON DRAWINGS.
 B. HEATER SHALL BE FED FROM GFCI PROTECTED CIRCUIT IF INSTALLED WITHIN 1m OF A SINK, TUB, SHOWER (CEC 62-132). CONTROLS FOR HEATERS SHALL BE NO CLOSER THAN 500mm FROM SINK, TUB, SHOWER (CEC 62-130).

SPECIFIC ELECTRICAL NOTES

1. WIRE AND CONNECT DOOR OPERATOR AND ALL ASSOCIATED CONTROLS AS REQUIRED. CONFIRM ELECTRICAL REQUIREMENTS WITH DOOR SUPPLIER PRIOR TO ROUGH IN.
2. RELOCATE EXISTING FORCEMAIN LEAK MONITOR CONTROL PANEL AS SHOWN. EXTEND WIRING AS REQUIRED.
3. APPROXIMATE LOCATION WHERE BELOW GRADE WIRING ENTERS THE BUILDING TO LEAK MONITOR CONTROL PANEL. RELOCATE TO SOUTH TO ACCOMMODATE NEW INTERIOR WALLS. PROVIDE RIGID PVC LB AND CONDUIT TO 2' BELOW GRADE TO CONCEAL CABLING AS REQUIRED.
4. GRINDER PUMP LOCATED IN EXISTING SEWAGE TANK.
5. RELOCATE EXISTING HOT WATER HEATER AS SHOWN. EXTEND WIRING AS REQUIRED.
6. PROVIDE 120V CONNECTION TO LOW VOLTAGE TRANSFORMER FOR AUTOMATIC FLUSH TOILET. CONFIRM EXACT LOCATION WITH MECHANICAL.
7. FEED FROM EXISTING BATTERY BANK.
8. EXISTING EMERGENCY HEADS TO REMAIN. EXTEND WIRING FROM RELOCATED BATTERY BANK AS REQUIRED.

GENERAL ELECTRICAL NOTES

1. COORDINATE ELECTRICAL ROUTING WITH MECHANICAL PLUMBING LOCATIONS.

NOVA 3 ENGINEERING LTD.
 PROFESSIONAL ENGINEERS
 201-120 FORT STREET TEL: (204) 943-6142
 WINNIPEG, MANITOBA R3C 1C7 FAX: (204) 942-1276
 WWW.NOVA3.CA JN: 41-139
 THIS DRAWING IS THE EXCLUSIVE PROPERTY OF NOVA 3 ENGINEERING LTD. AND MAY ONLY BE REPRODUCED WITH THE WRITTEN PERMISSION OF NOVA 3 ENGINEERING LTD.
 THE CONCEPT AND DESIGN INCORPORATED INTO THIS DRAWING ARE BASED ON INFORMATION PROVIDED BY THE CLIENT AND OTHER RELATED SOURCES. PROFESSIONAL ENGINEER ACCEPTS NO RESPONSIBILITY FOR DRAWING AND DESIGN UNLESS DRAWING IS ACCOMPANIED BY ORIGINAL SEALED LETTER OF INTENT OR EQUIVALENT ACCEPTABLE FACSIMILE. PROFESSIONAL ENGINEER ACCEPTS NO RESPONSIBILITY FOR FINAL INSTALLATION CONFORMANCE WITHOUT ORIGINAL SEALED CERTIFICATE OF INSPECTION OR EQUIVALENT ACCEPTABLE FACSIMILE.

Revisions

Date	Revision
2021-10-25	Issued for Construction

Northern Sky Architecture Inc.

100-129 James Avenue
 Winnipeg, Manitoba, Canada
 R2S 0R6
 contact@nsa.ca
 Fax: 204.943.7979
 204.943.6767

Stamp

APEGM
 Certificate of Authorization
 Nova 3 Engineering Ltd.
 No. 962 Date: 2021-10-25

Stamp

PROVINCE OF MANITOBA
ZILINSKI
 REGISTERED ENGINEER
 2021-10-25

Project
 City of Winnipeg
 Churchill Park Maintenance
 Building Renovation
 430 Churchill Dr
 Winnipeg, Manitoba

drawing title
ELECTRICAL LAYOUTS AND SCHEDULES

scale	as noted	designed by	CL
date	2021-08-30	drawn by	CL
project no.	21.190	reviewed by	DZ
reference no.	sheet	E2.0	REV.