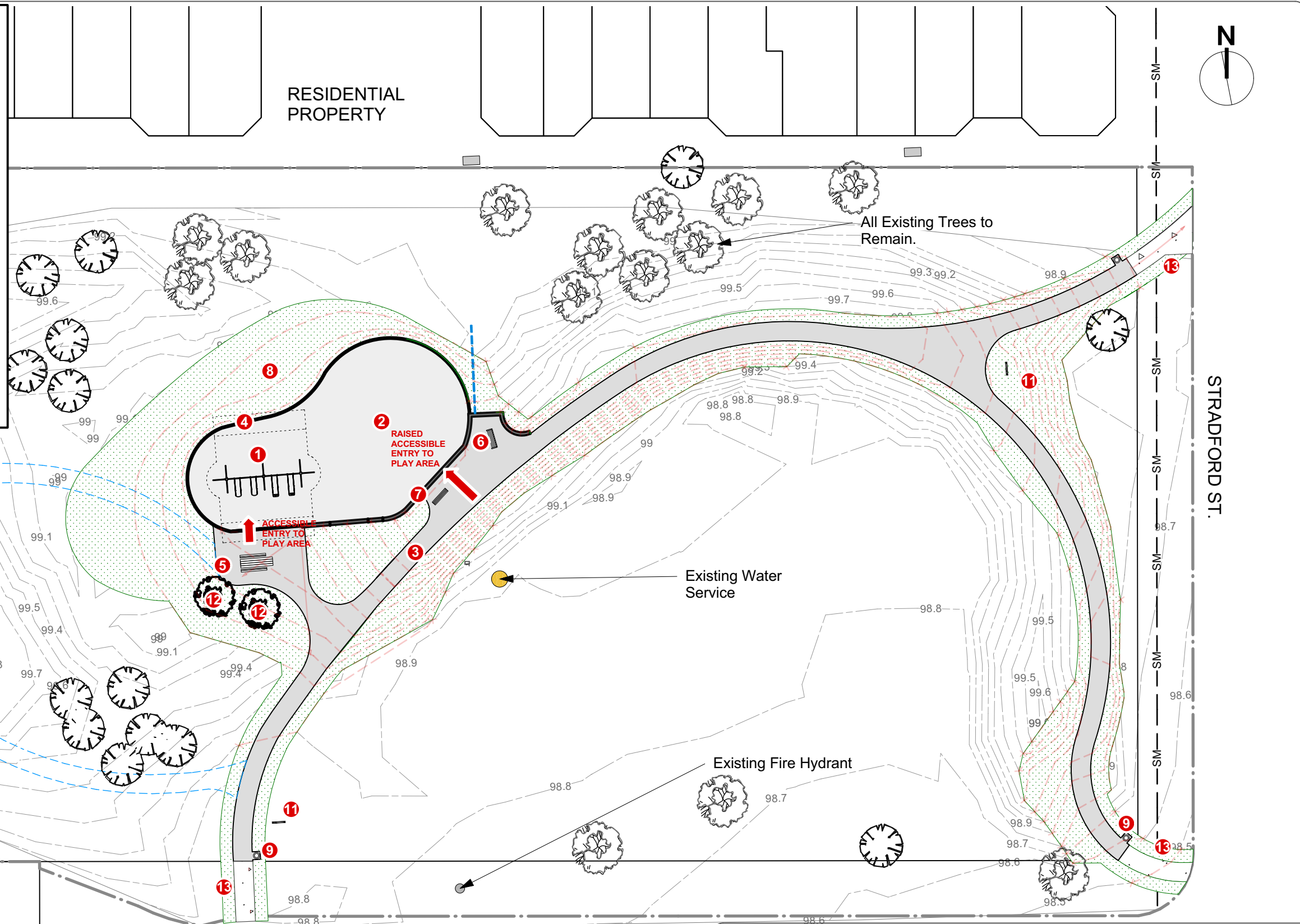


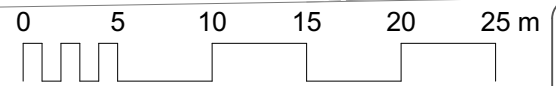
**LEGEND**

- 1 New Two-Bay Swing Set (2 Belt, 2 Bucket)
- 2 New Age 2-12 Play Equipment c/w Ramped Entry and Engineered Wood Fibre Safety Surfacing (311 SM)
- 3 New Asphalt Path and Seating Area (421 SM)
- 4 New CIP Concrete Edging Around Play Area (50 LM)
- 5 New Accessible Picnic Table (1)
- 6 New Benches - 1 Backless, 1 Backed (2)
- 7 New Precast Block Retaining Wall (28 SM Wall Face)
- 8 New Sod To Indicated Extents (Dotted Hatched Areas) (1090 SM)
- 9 New Waste Receptacle (3)
- 10 Future Path and Benches (Blue Dashed Lines) (BY OTHERS)
- 11 New Double-Sided Park Sign (1) & Single-Sided Park Sign (1)
- 12 New Tree Planting (BY OTHERS)
- 13 New CIP Concrete Sidewalk and Curb Cut (38 SM)

— SM — Sewer Main  
 — WM — Water Main  
 - - - - - Park Property Line



1 Overall Plan  
Scale: 1:400



CONTRACTOR TO CONFIRM ALL DIMENSIONS AND REPORT ANY DISCREPANCIES TO CONTRACT ADMINISTRATOR PRIOR TO CONSTRUCTION. LOCATION OF UNDERGROUND STRUCTURES AS SHOWN ARE BASED ON THE BEST INFORMATION AVAILABLE BUT NO GUARANTEE IS GIVEN THAT ALL EXISTING UTILITIES ARE SHOWN OR THAT THE GIVEN LOCATIONS ARE EXACT. CONFIRMATION OF EXISTENCE AND EXACT LOCATION OF ALL SERVICES MUST BE OBTAINED FROM THE INDIVIDUAL UTILITIES BEFORE PROCEEDING WITH CONSTRUCTION.



THE CITY OF WINNIPEG  
Planning, Property and Development Department  
Planning and Land Use Division  
Unit 15 - 30 Fort Street, Winnipeg, MB, (R3C 4X5)

DESIGNED BY	IM	CHECKED BY	
DRAWN BY	IM	APPROVED BY	
HORIZ. SCALE	1:400		
VERT. SCALE			
DATE	Jan 2021		

MANAGER, PARK AND OPEN SPACES	DATE
MANAGER, PLANNING AND LAND USE DIVISION	DATE

DRAWING TITLE	DRAWING NO.
<b>Bernadine Stradford Park Playground Redevelopment Overall Plan</b>	<b>B.58-D1</b>
SITE ADDRESS 10 Stradford St	BID OPPORTUNITY NO. <b>61-2021</b>