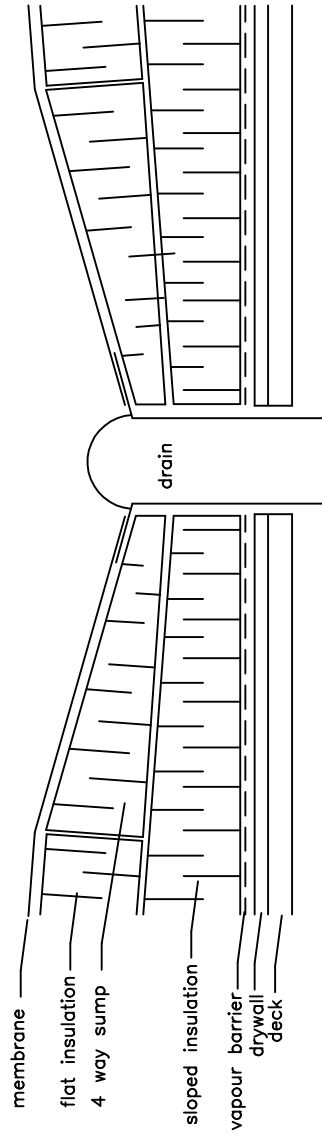
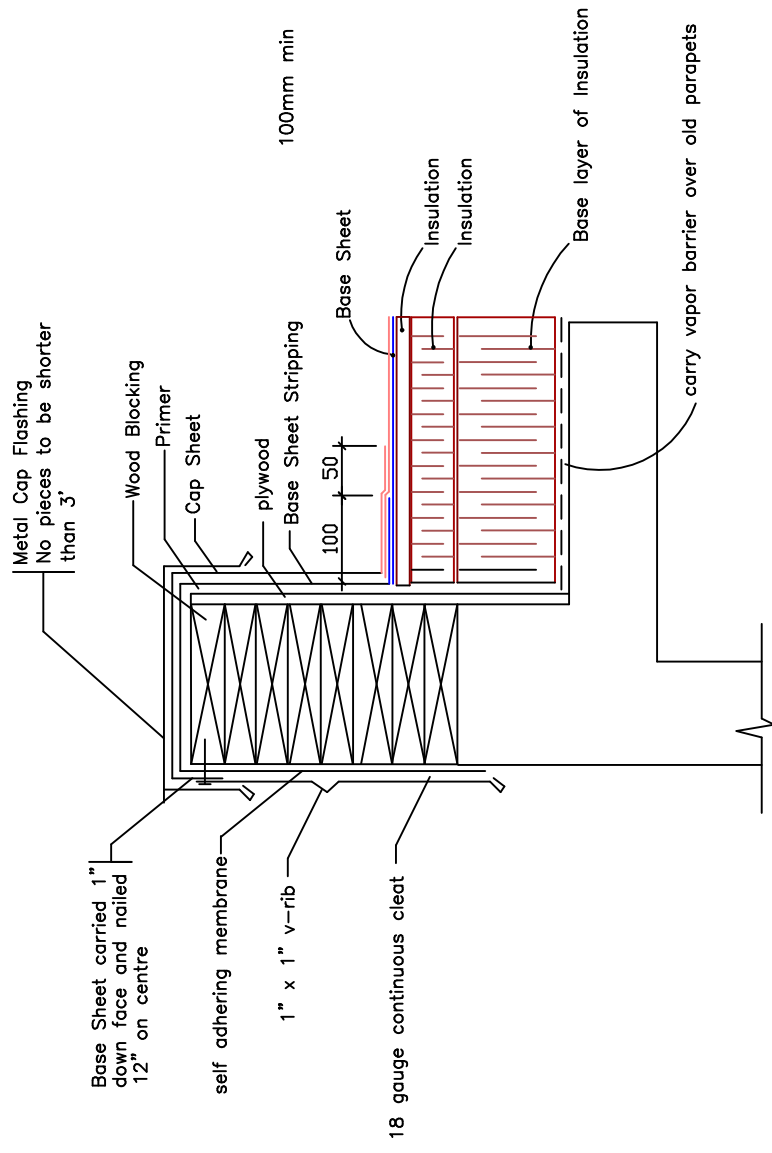


Drain Sump



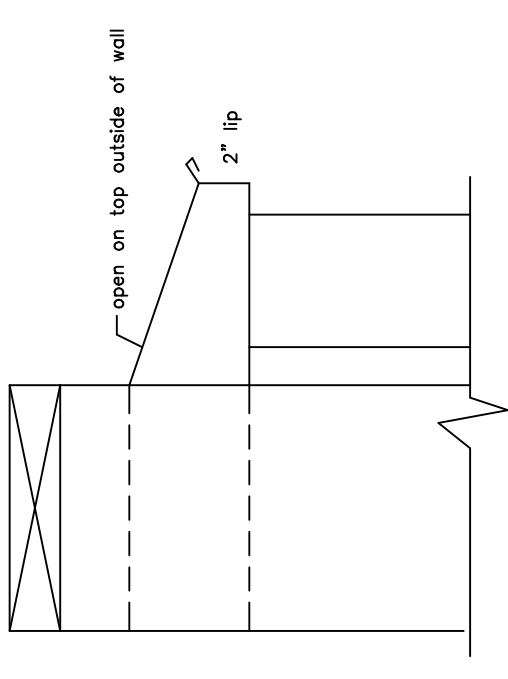
Typical Parapet Construction



A continuous 18 gauge galvanized cleat is to be installed to insure outside face of flashing is firmly attached to outside face whenever outside face of flashing exceeds 3". No fasteners will be accepted on the outside face.

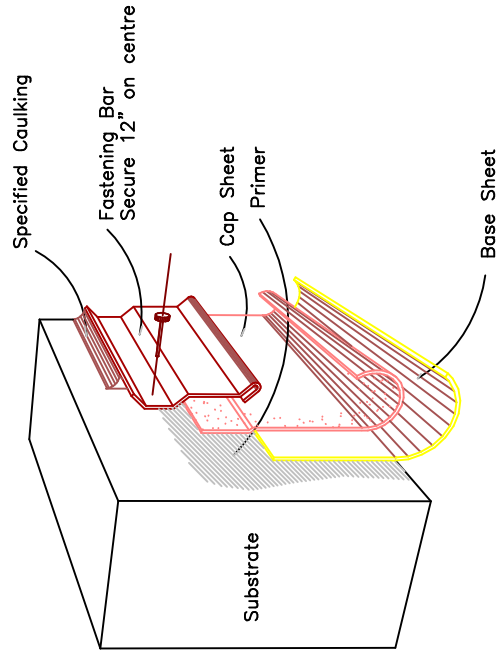
26 Gauge counter flashing complete with approx. 1" 45 degree bottom kick out is to be installed over all membrane stripping. Additionally fasten at about the half height with fasteners spaced no more than 24" on centre.

Typical Scupper

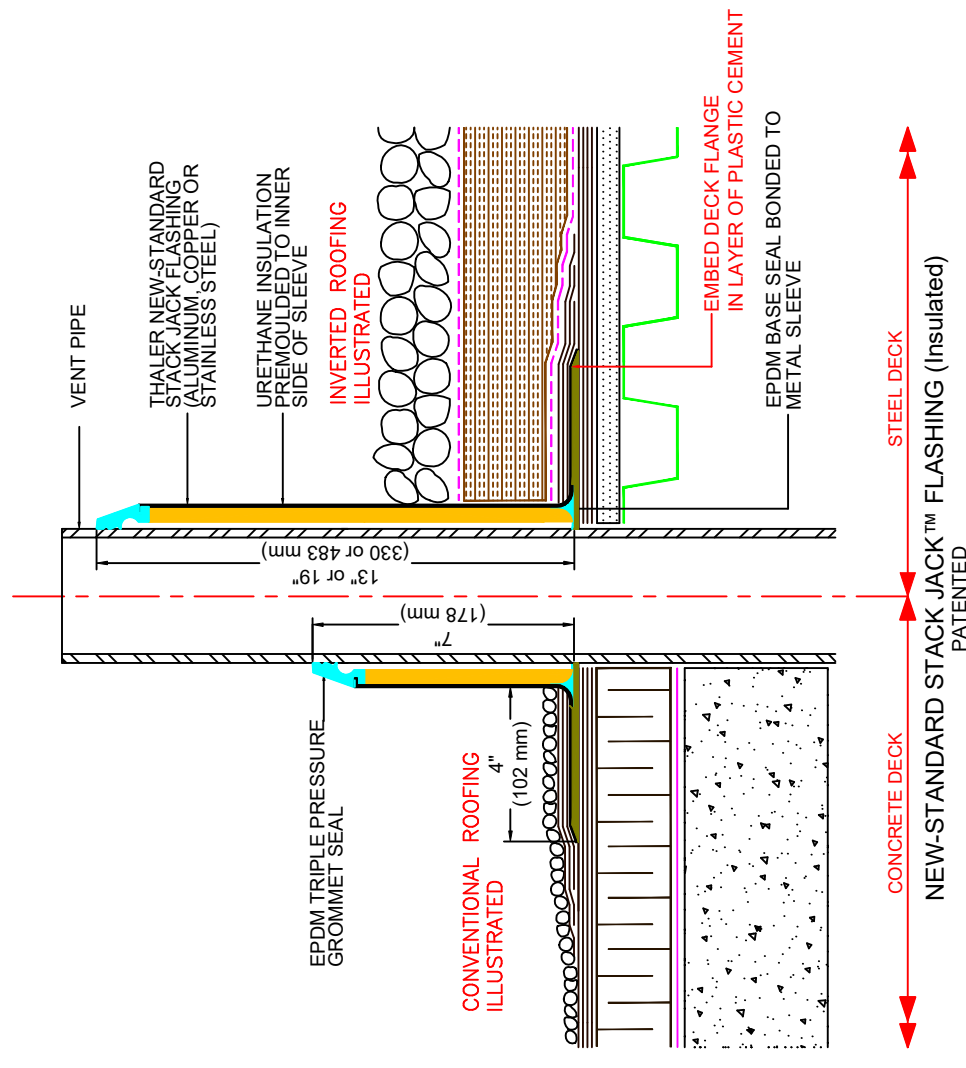



Notes:
Scupper shall be 4 sided through parapet
Scupper shall be minimum 8" wide x 6" high

Typical Fastening Bar



Thaler Stackjack SJ-37 & 38

Agassiz Consulting Group Ltd.
Box 41, Warren, Manitoba R0C 3E0
Office Phone: (204) 383-5538

Project: Winnipeg Fire Paramedic Service
Station 24
1665 Rothesay
Winnipeg, MB

Date: January 20, 2021

Drawing No. D-1

File no: 5085-21 Scale: NTS