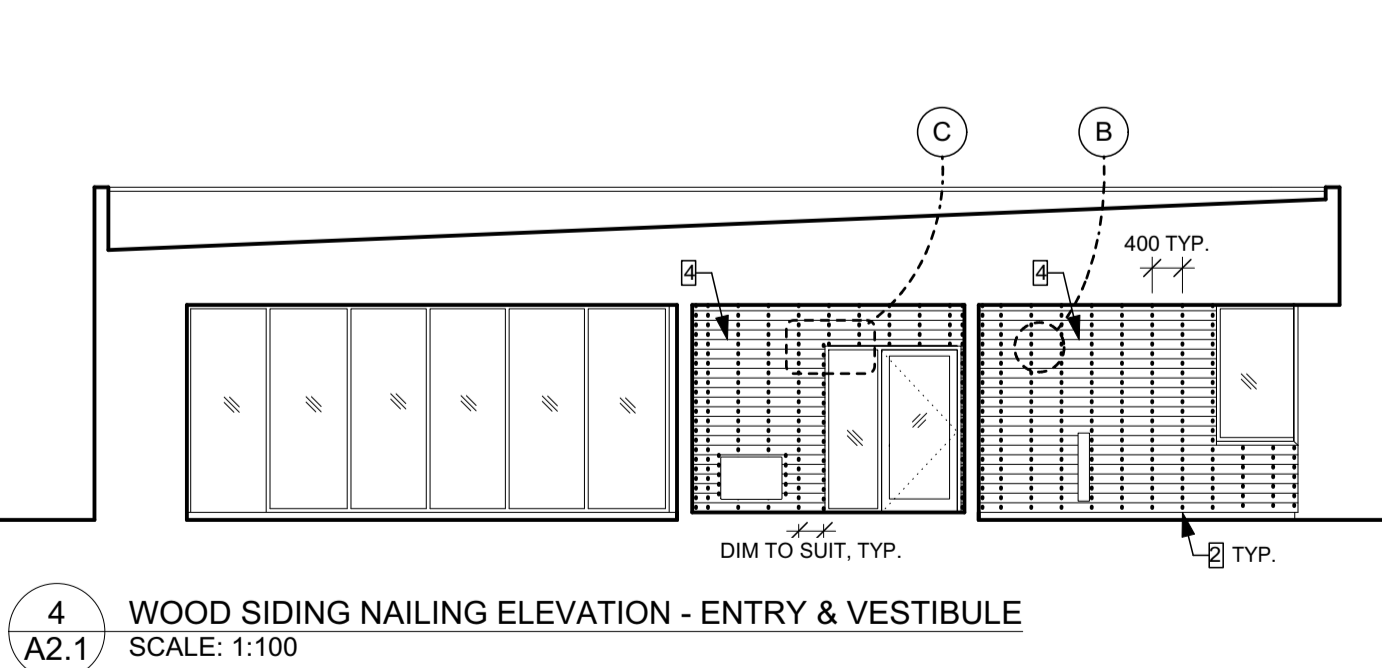
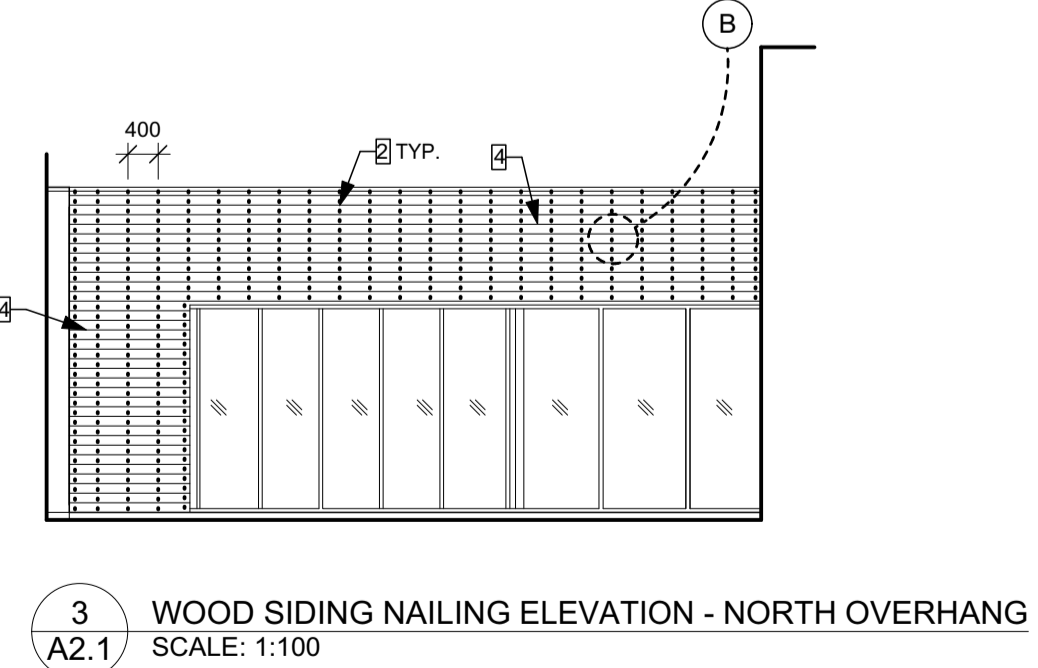
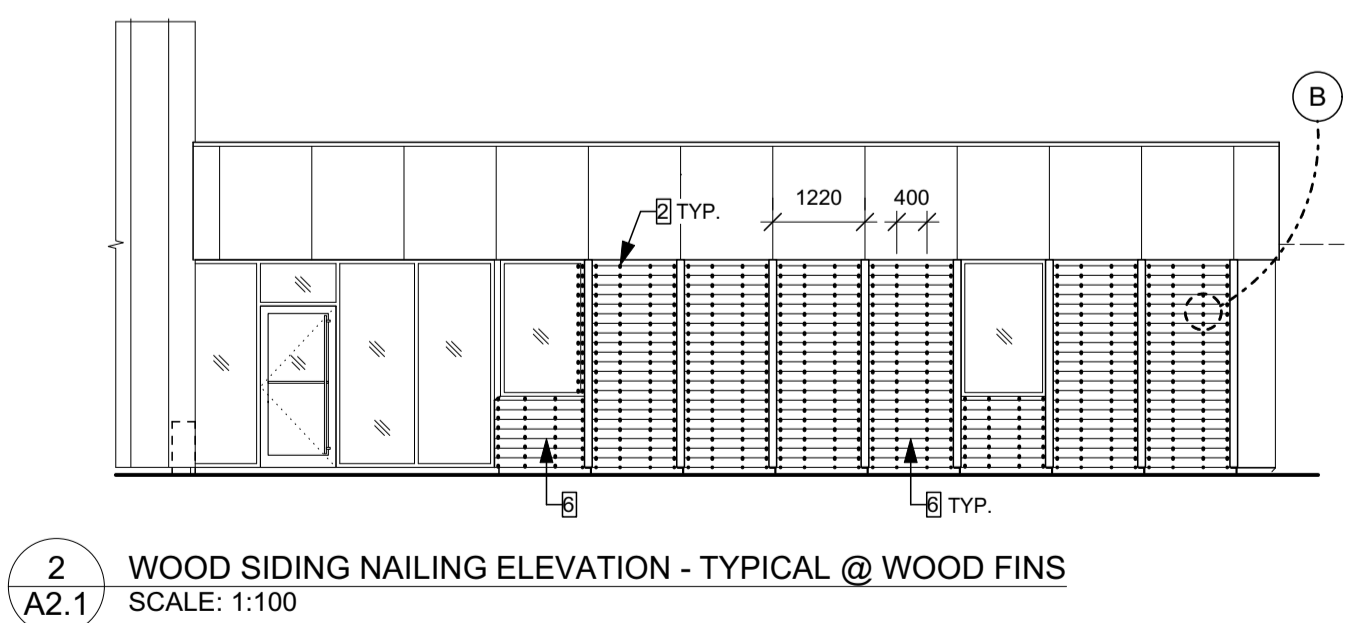
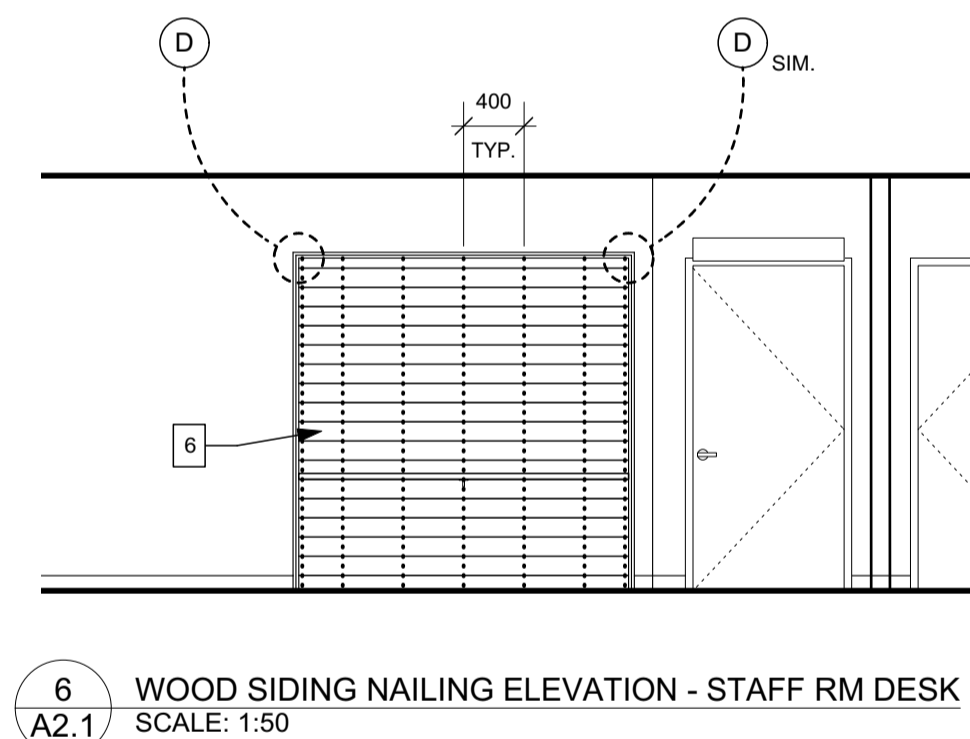
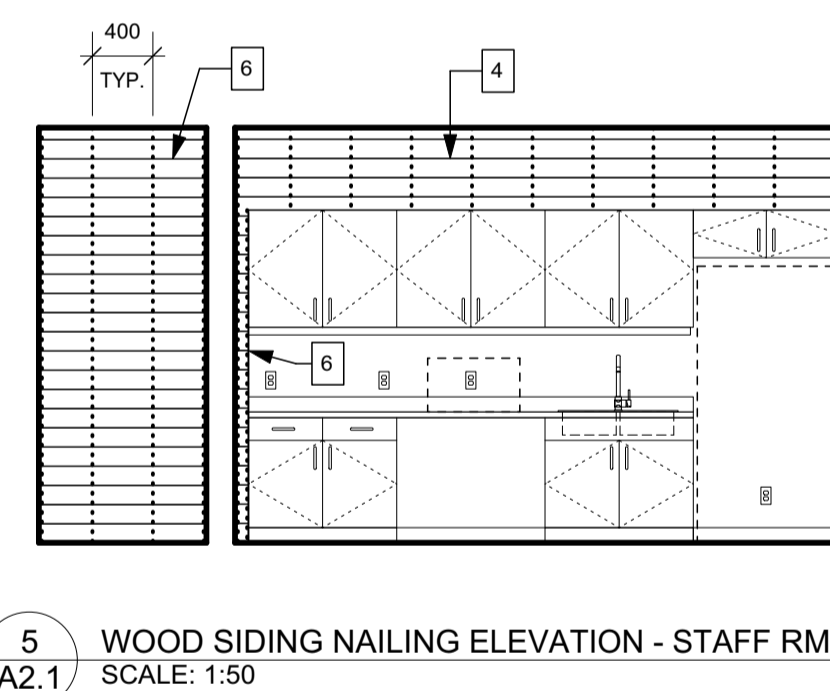
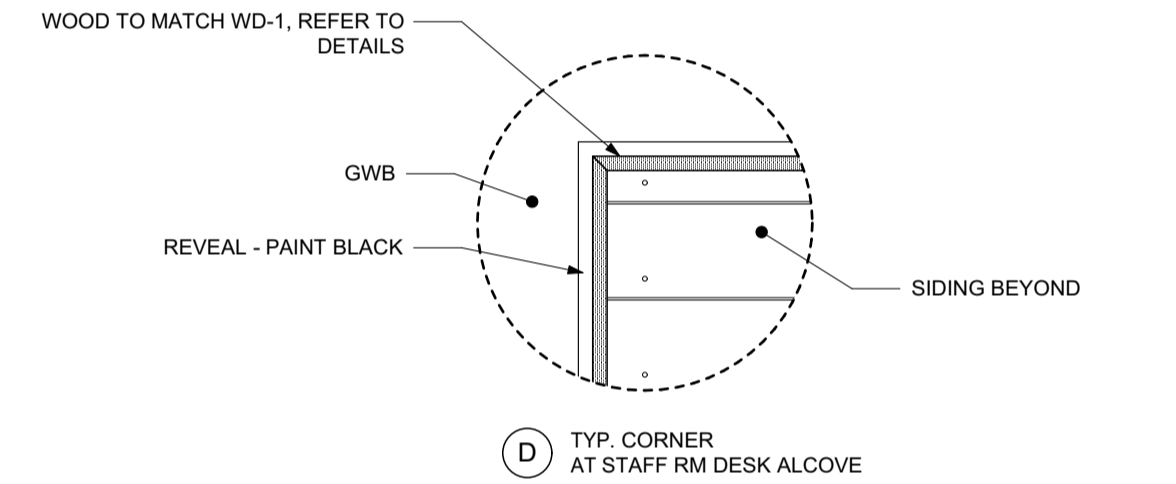
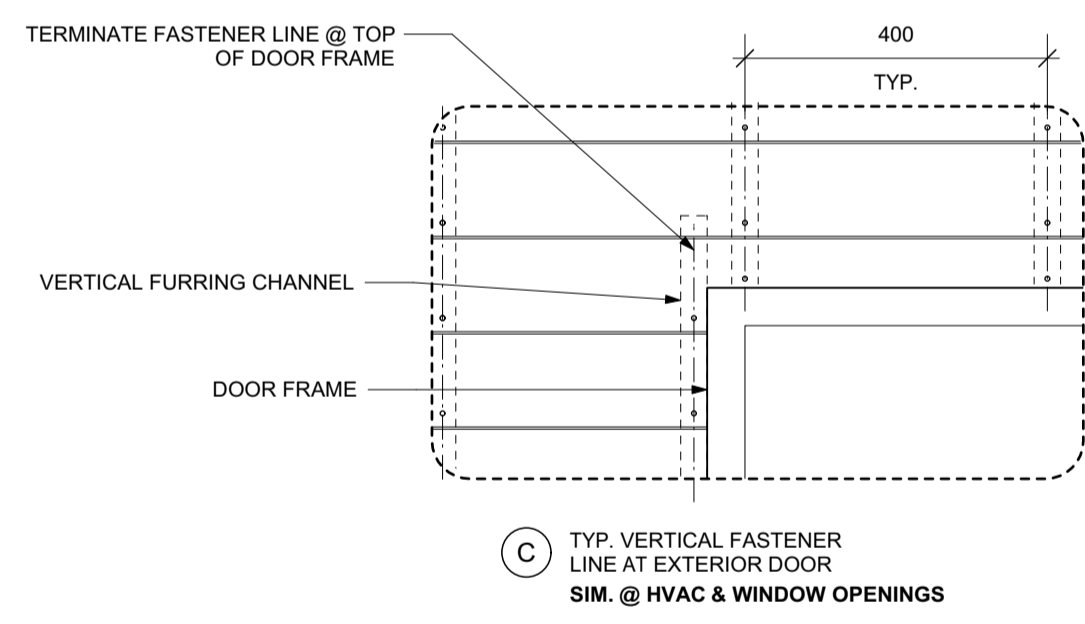
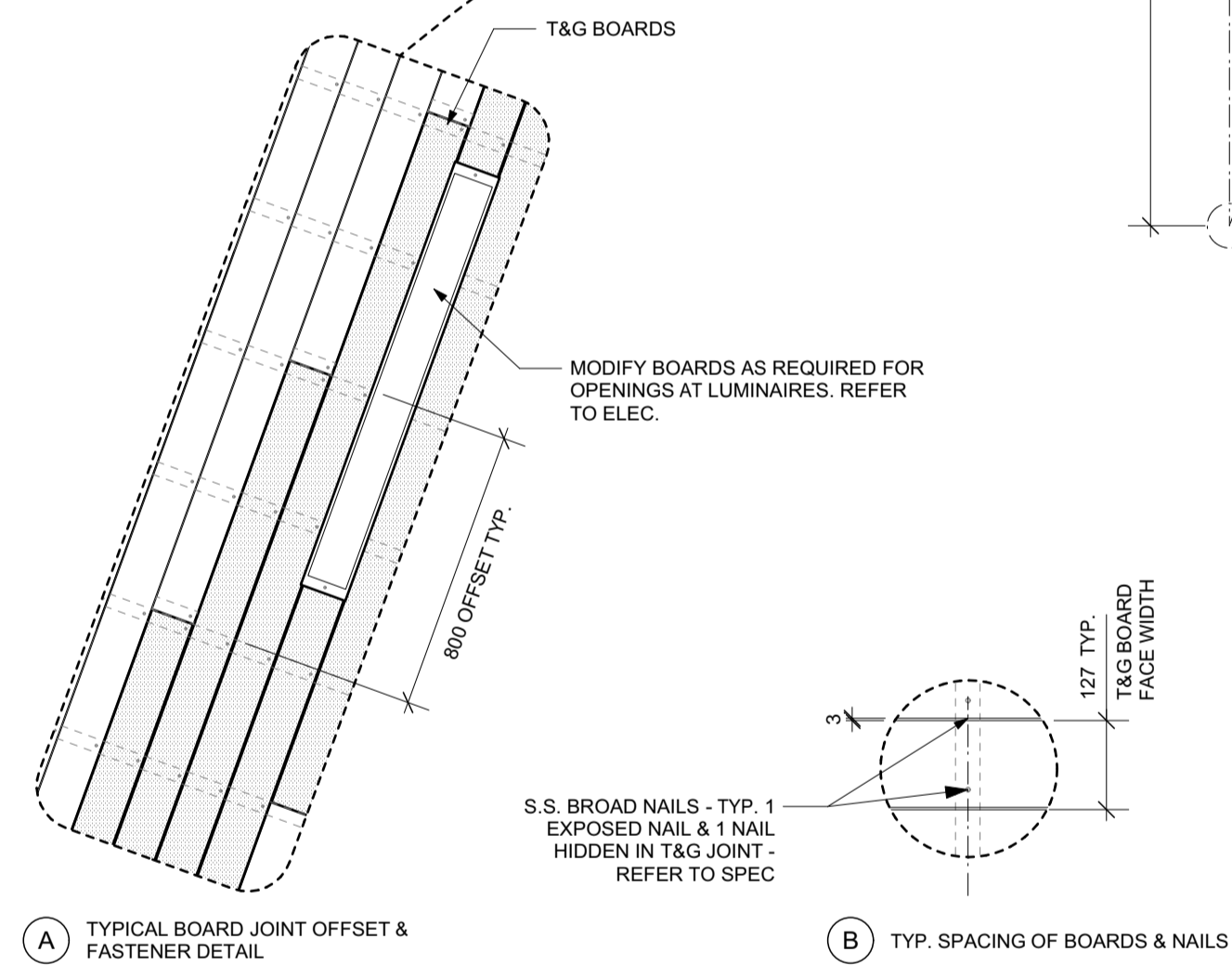


- FASTENING PLAN & ELEVATION KEYNOTES**
- CENTER POT LIGHT BETWEEN WOOD FINS
  - WALL CLADDING VERTICAL FASTENER LINES (ELEVATION)
  - ALIGN T&G WOOD SOFFIT JOINTS
  - REFER TO DETAIL 'A' FOR TYPICAL OFFSET
  - ALIGN LINEAR LIGHT FIXTURES TO CENTER ON WOOD SOFFIT BOARDS. MODIFY BOARDS AS REQUIRED FOR OPENINGS. REFER TO ELEC. FOR LUMINAIRE INFORMATION.
  - FULL LENGTH BOARDS - NO OFFSET
  - WOOD STORAGE 'FIN' - REFER TO WALL SECTIONS AND DETAILS



NO.	DATE	REVISION / ISSUANCE
3	-	-
2	-	-
1	-	-
0	21.10.29	ISSUED FOR CONSTRUCTION

**x | architecture inc.**  
120 Fort Street, Suite 103 | Winnipeg, Manitoba R3C 1C7 | 204 318 2910

Project  
**ST. VITAL PARK GARAGE & STAFF HOUSE**  
190 RIVER ROAD

Sheet Title  
**FASTENER PLAN**

Project No.	Sheet
20105	<b>A2.1</b>
Date	
21.10.29	