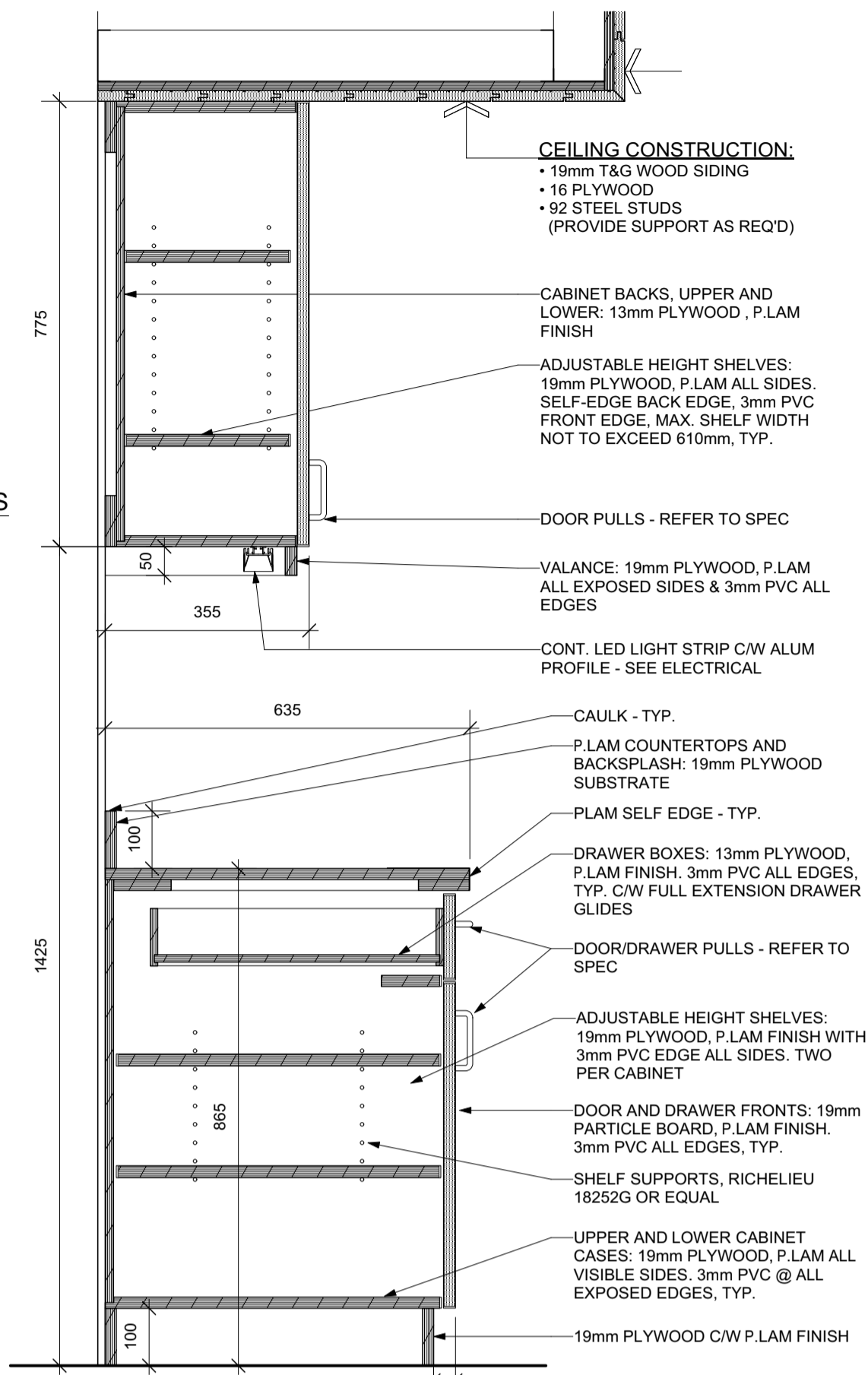
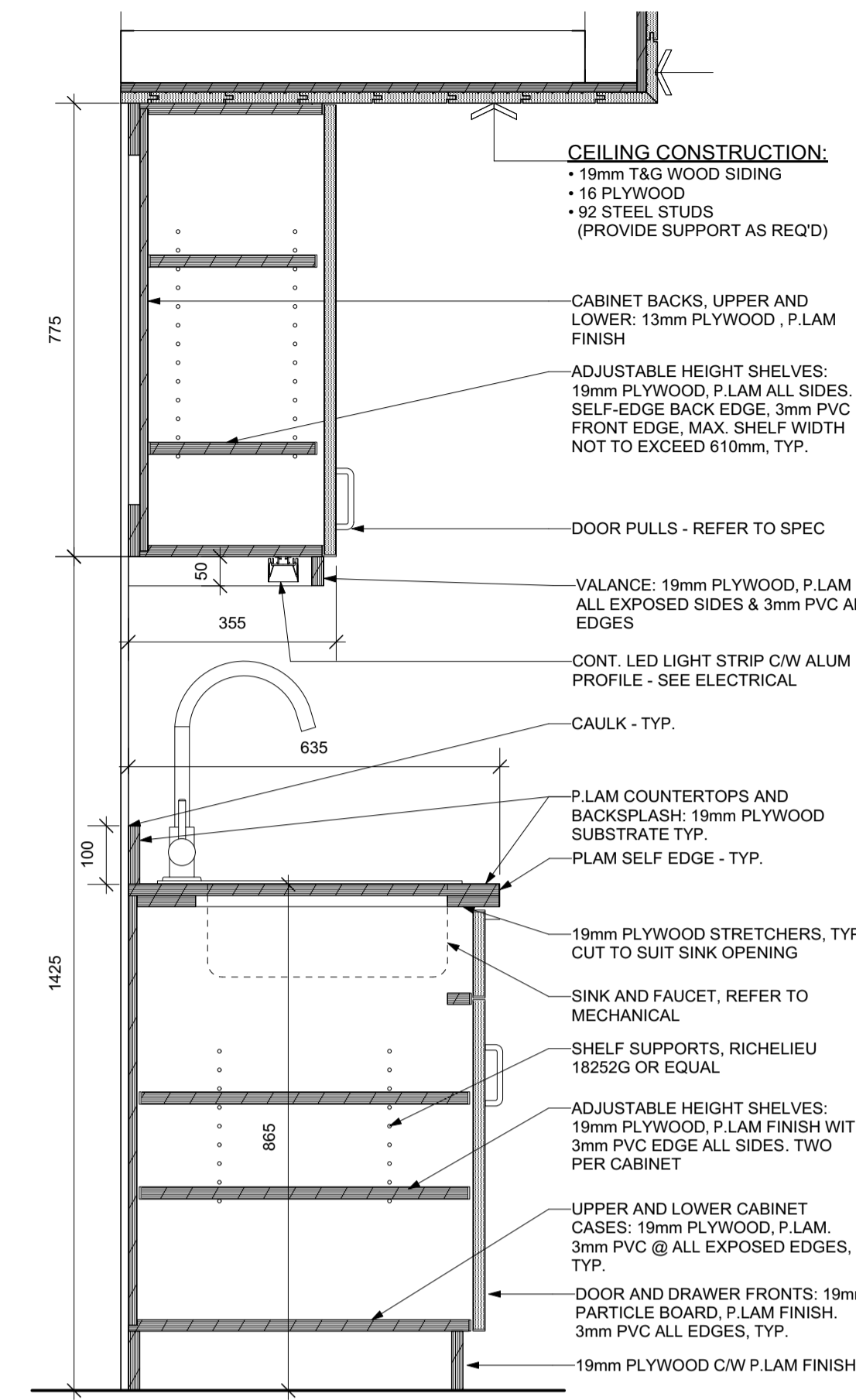


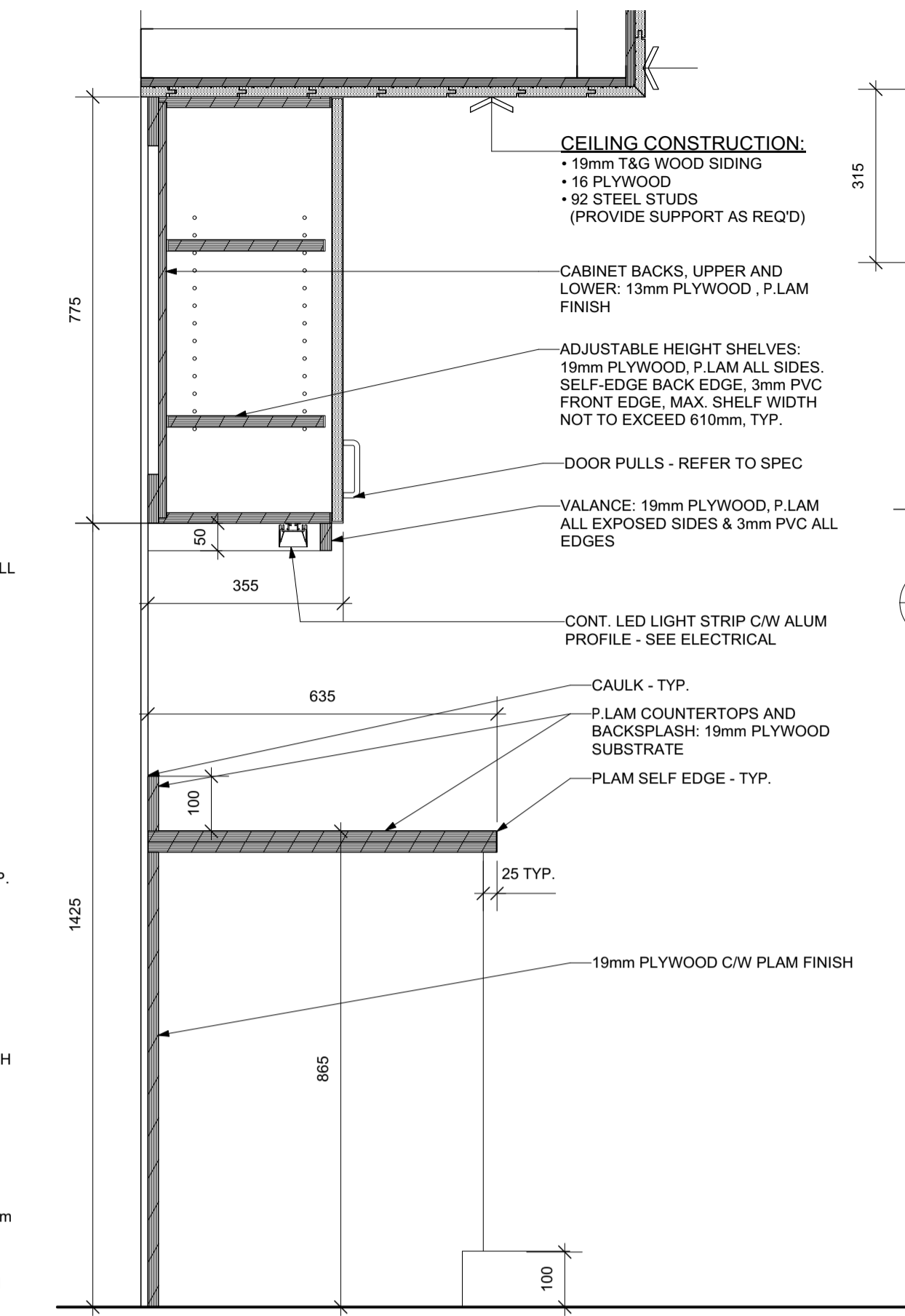
5
A8.0
DETAIL - SINK CLEARANCES
SCALE: 1:10



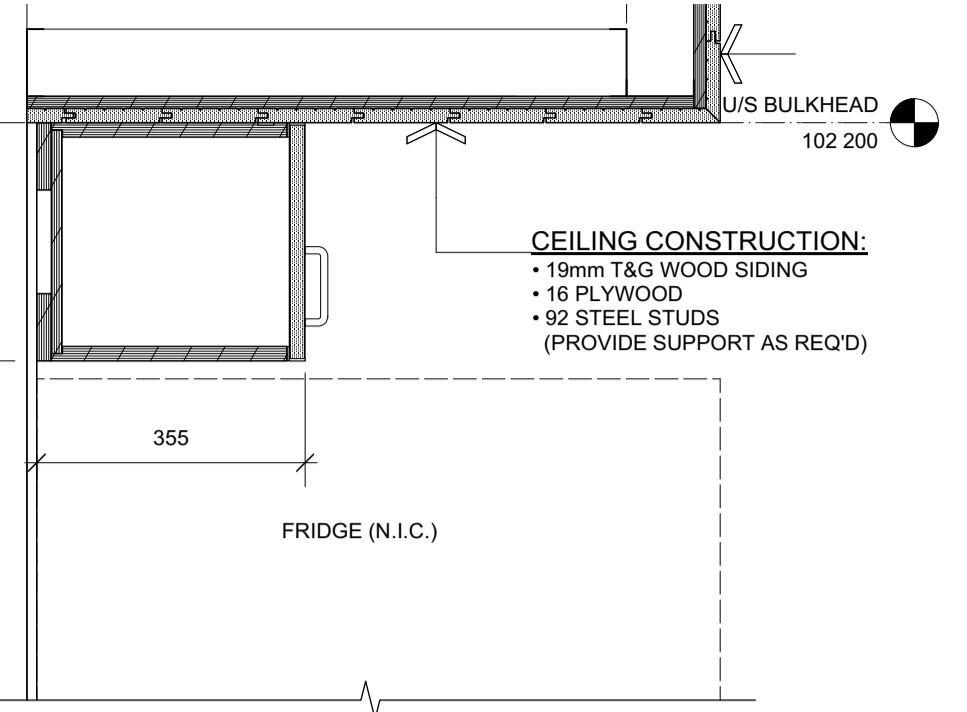
2
A8.0
DETAIL - STAFF ROOM KITCHEN @ DRAWER
SCALE: 1:10



3
A8.0
DETAIL - STAFF ROOM KITCHEN @ SINK
SCALE: 1:10

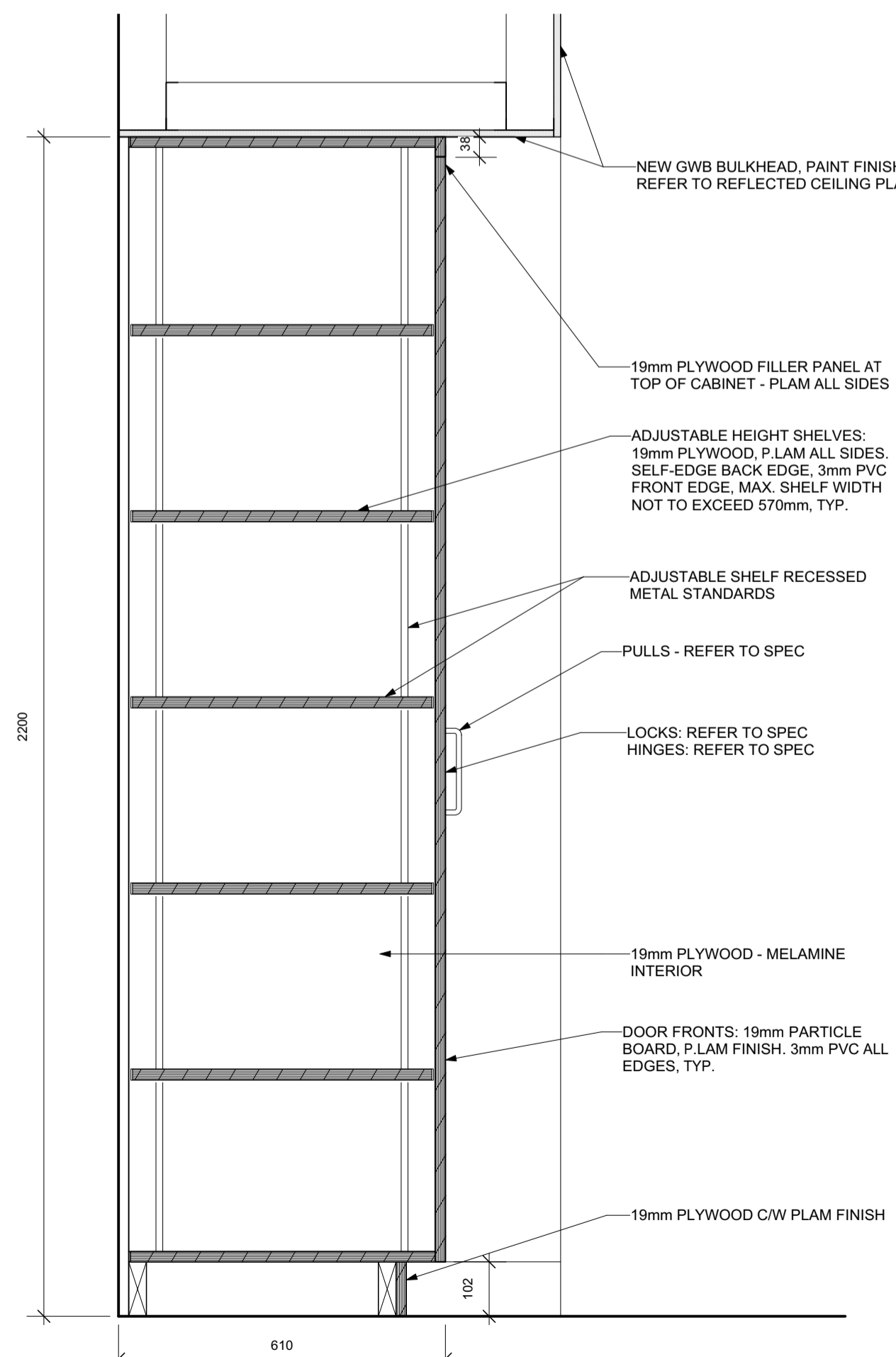


4
A8.0
DETAIL - STAFF ROOM KITCHEN @ MICROWAVE
SCALE: 1:10

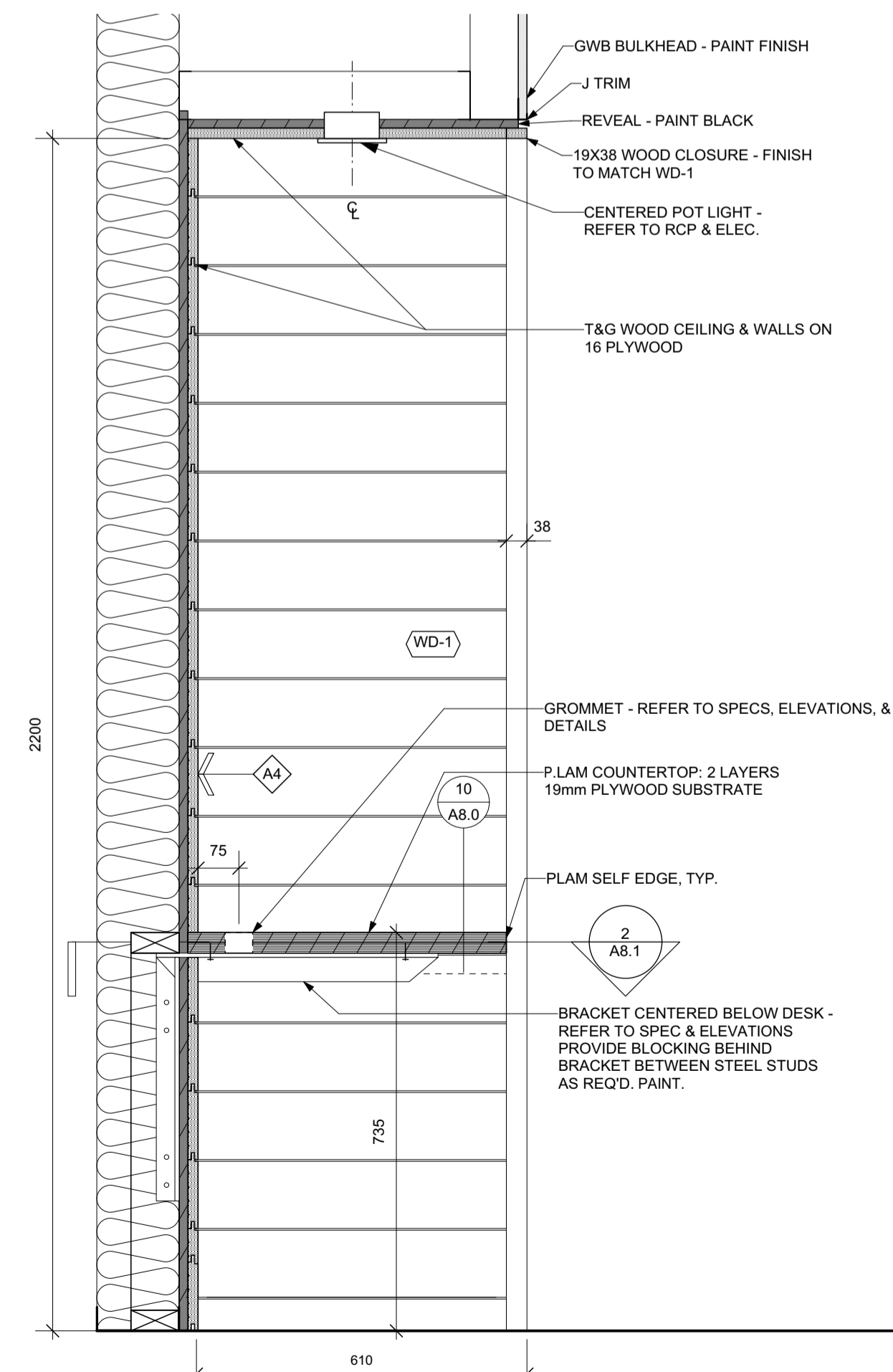


11
A8.0
DETAIL - STAFF ROOM KITCHEN @ FRIDGE
SCALE: 1:10

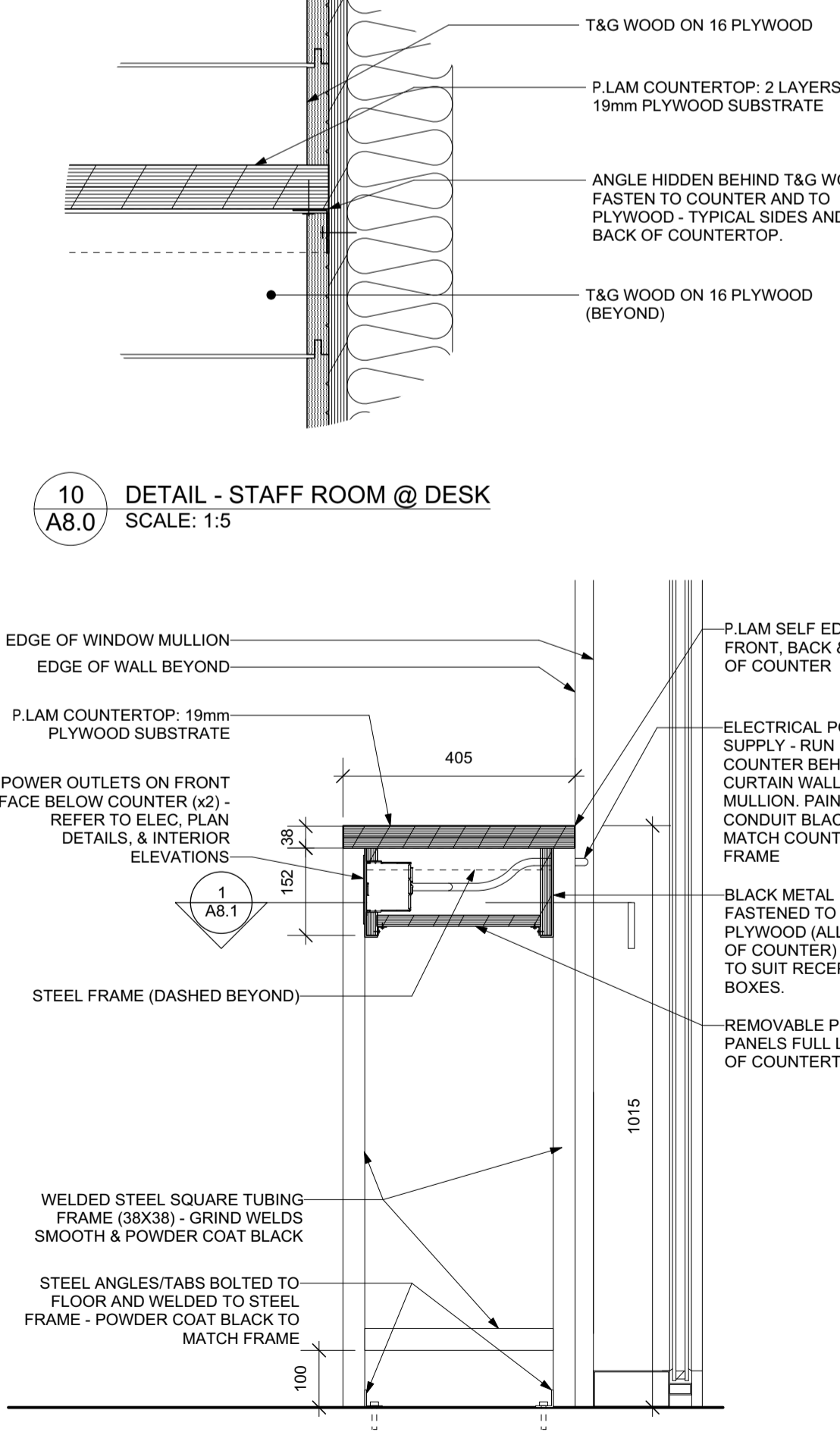
1
A8.0
DETAIL - LOCKER ROOM SINK COUNTER
SCALE: 1:10



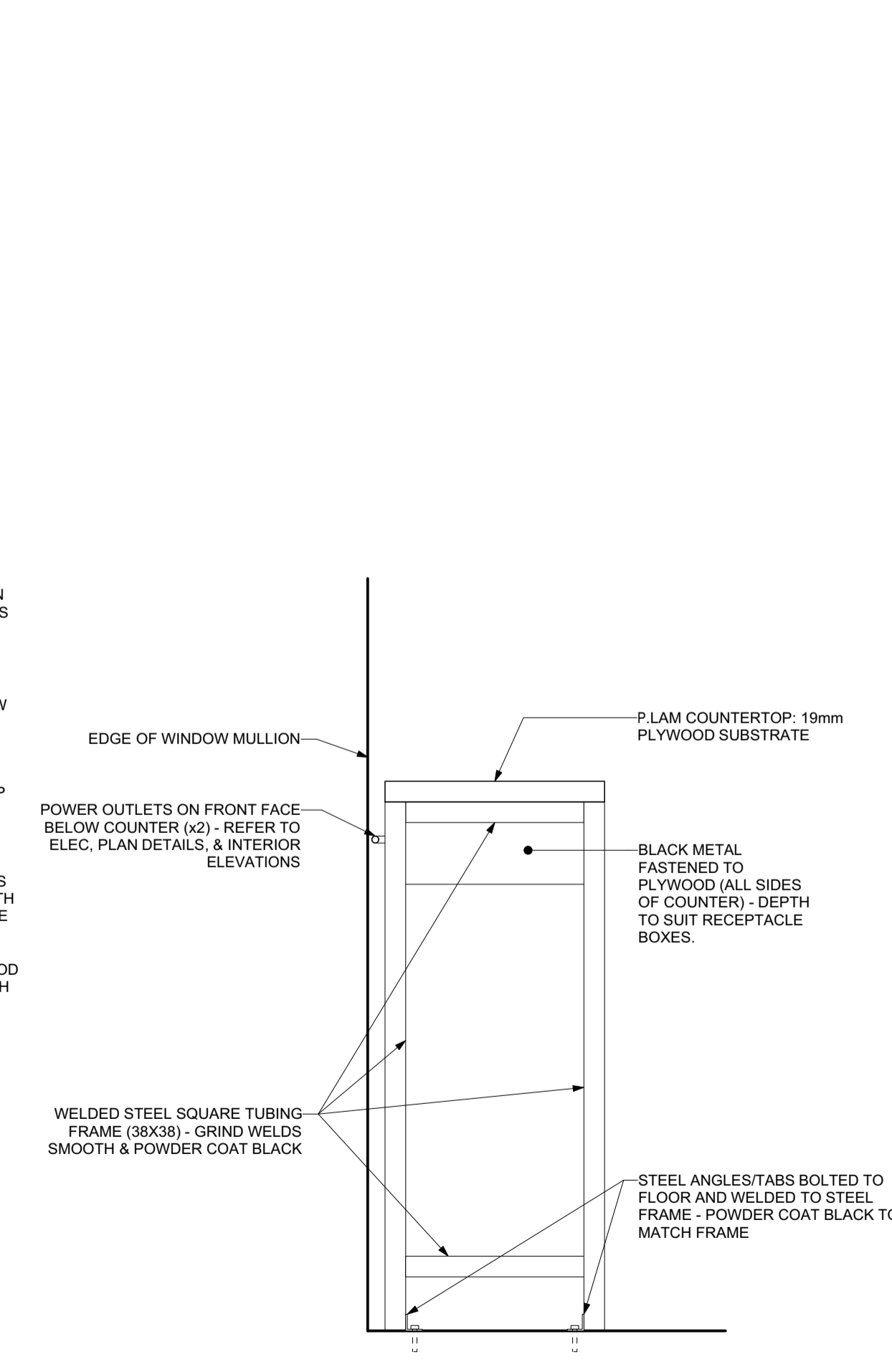
6
A8.0
DETAIL - SHARED OFFICE & FOREMAN CABINETS
SCALE: 1:10



7
A8.0
DETAIL - STAFF ROOM @ DESK
SCALE: 1:10



8
A8.0
DETAIL - STAFF ROOM @ BAR HEIGHT COUNTER
SCALE: 1:10



9
A8.0
ELEVATION - STAFF ROOM @ BAR HEIGHT COUNTER
SCALE: 1:10

10
A8.0
DETAIL - STAFF ROOM @ DESK
SCALE: 1:5

3	-	-
2	-	-
1	-	-
0	21.10.29	ISSUED FOR CONSTRUCTION
NO.	DATE	REVISION / ISSUANCE

Architect
Engineer
Project
Sheet Title
Project No. 20105
Date 21.10.29

x | architecture inc.
130 Fort Street, Suite 103 Wangong, Melbourne VIC 3127 204 318 2100

**ST. VITAL PARK
GARAGE & STAFF HOUSE
190 RIVER ROAD**

MILLWORK DETAILS

Project No. 20105
Date 21.10.29
A8.0