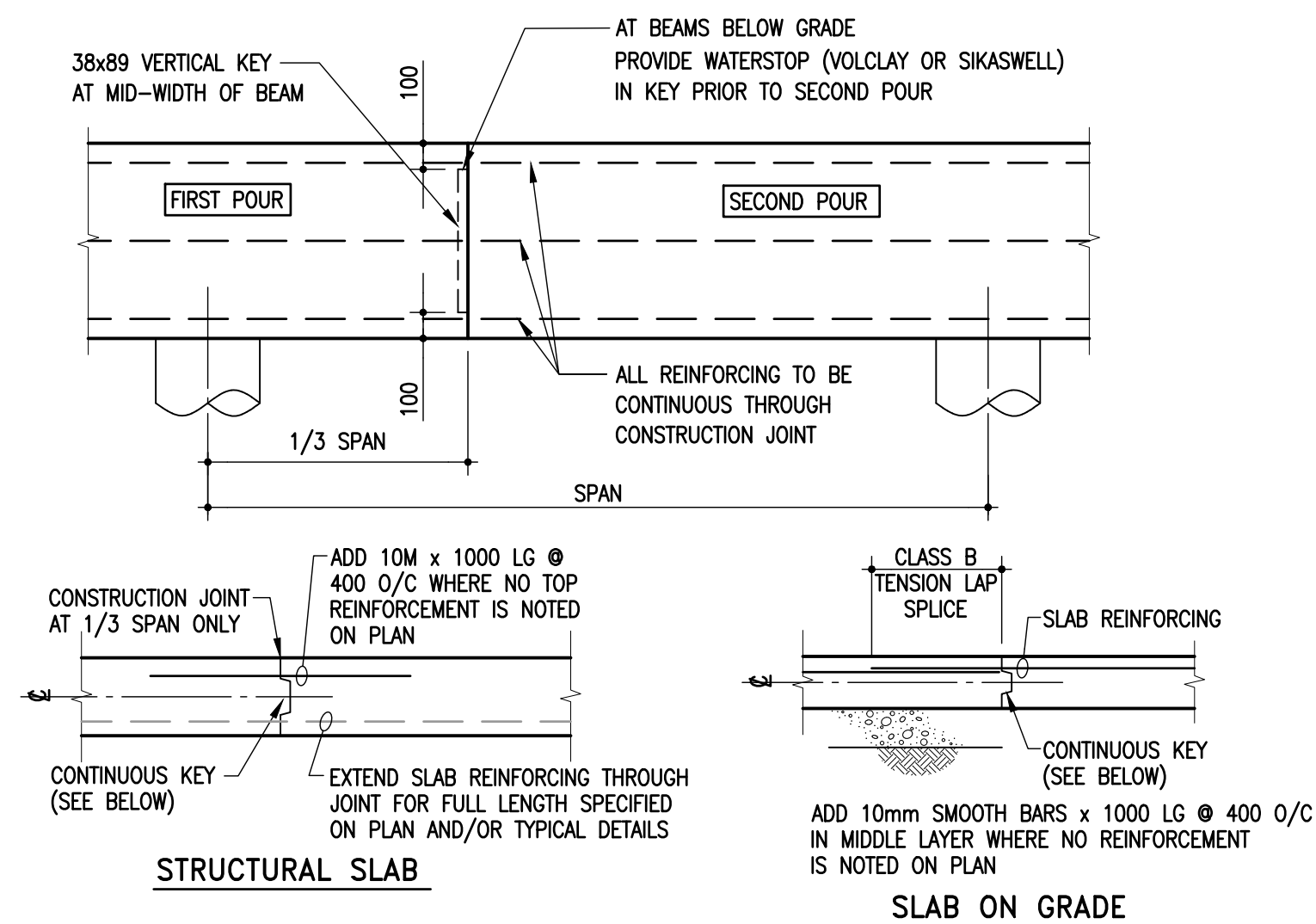


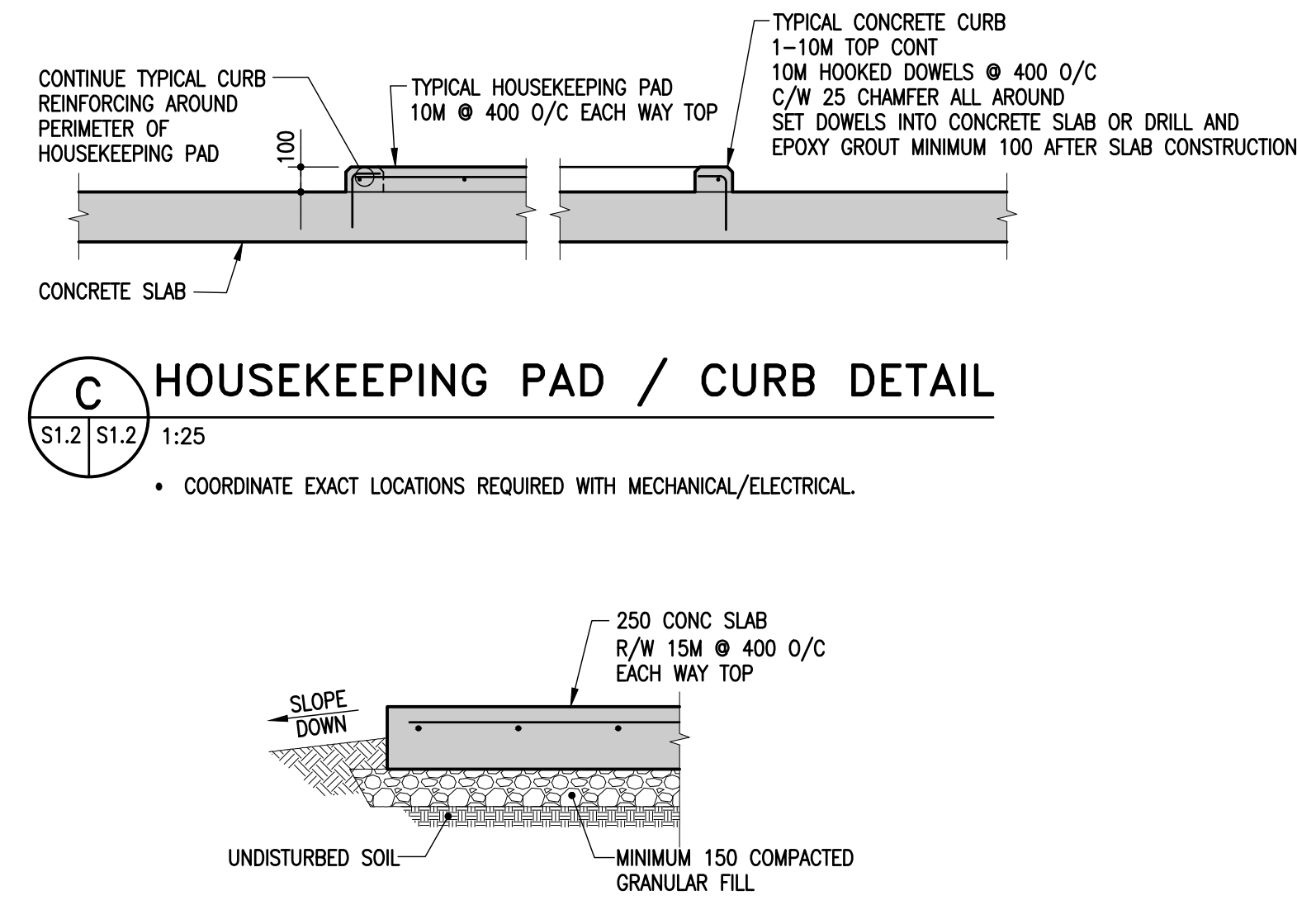
A REINFORCING AT OPENINGS IN STRUCTURAL SLABS
S1.2 | S1.2 1:25

- NOTES:
- UNLESS NOTED OTHERWISE ON THE STRUCTURAL DRAWINGS, REINFORCE AT OPENINGS AS PER DETAILS ABOVE.
 - DO NOT MAKE OPENINGS LARGER THAN THE MAXIMUM DIMENSIONS NOTED ABOVE WITHOUT PRIOR APPROVAL FROM THE CONSULTANT OR UNLESS NOTED ON STRUCTURAL DRAWINGS.
 - RESTRICTIONS ON OPENING SIZE AND LOCATION:
 - ONE-WAY SLABS & TWO-WAY SLABS - MAXIMUM OPENING SIZE IS 750mm SQUARE.
 - FLAT SLABS AND FLAT PLATES:
 - MAKE NO OPENINGS WITHIN TWICE THE SLAB DEPTH FROM THE FACE OF A COLUMN OR EDGE OF A CAPITAL EXCEPT AS NOTED ON THE STRUCTURAL DRAWINGS.
 - MAXIMUM OPENING SIZES:
 - IN AREAS COMMON TO 2 COLUMN STRIPS - NOT GREATER THAN 1/8 OF THE SMALLER OF THE TWO COLUMN STRIP WIDTHS.
 - IN AREAS COMMON TO ONE COLUMN STRIP & ONE MIDDLE STRIP - NOT GREATER THAN 1/4 OF THE SMALLER OF THE TWO STRIP WIDTHS.
 - IN AREAS COMMON TO 2 MIDDLE STRIPS - NOT GREATER THAN 1/2 OF THE SMALLER OF THE TWO MIDDLE STRIP WIDTHS.



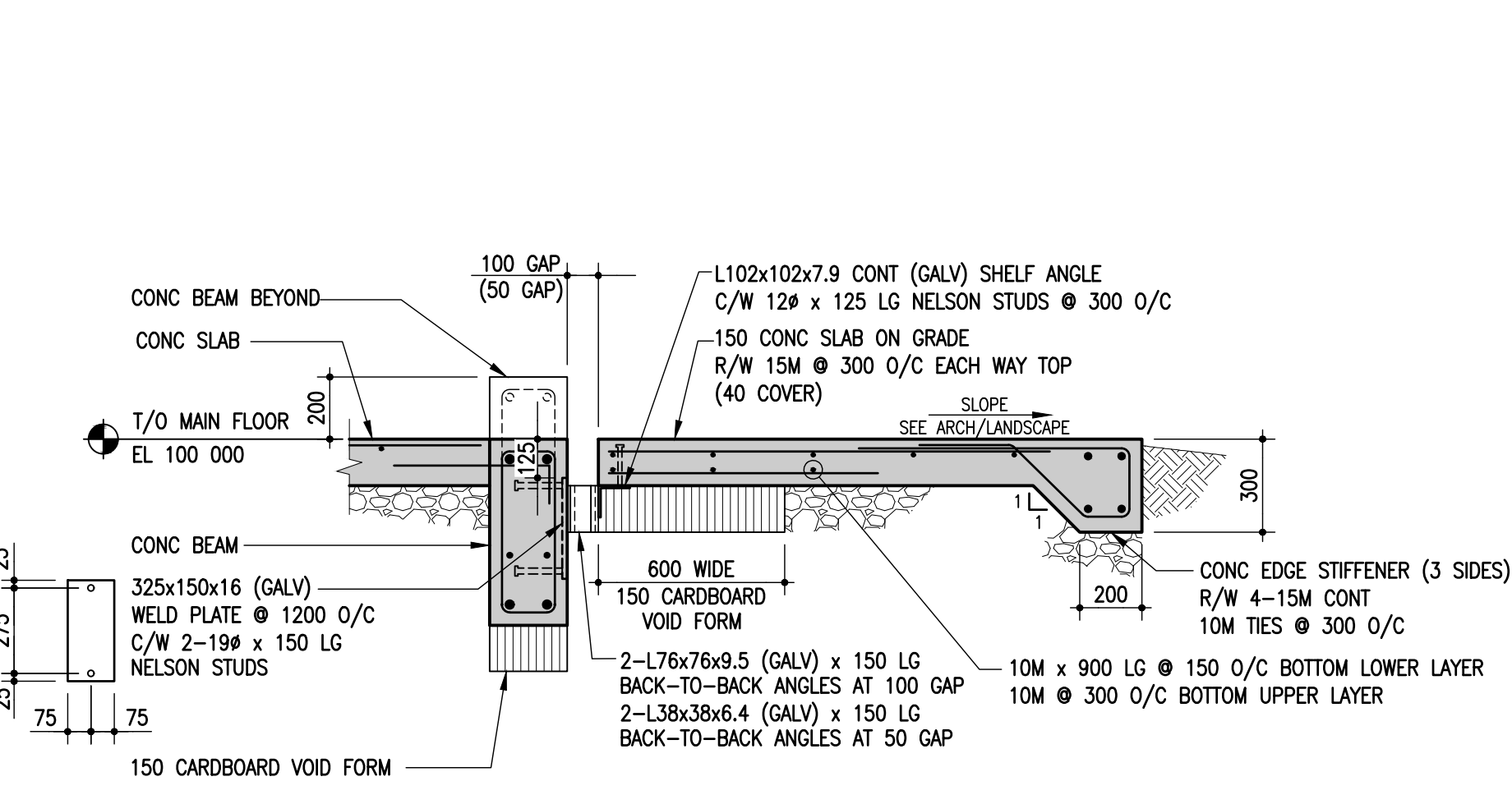
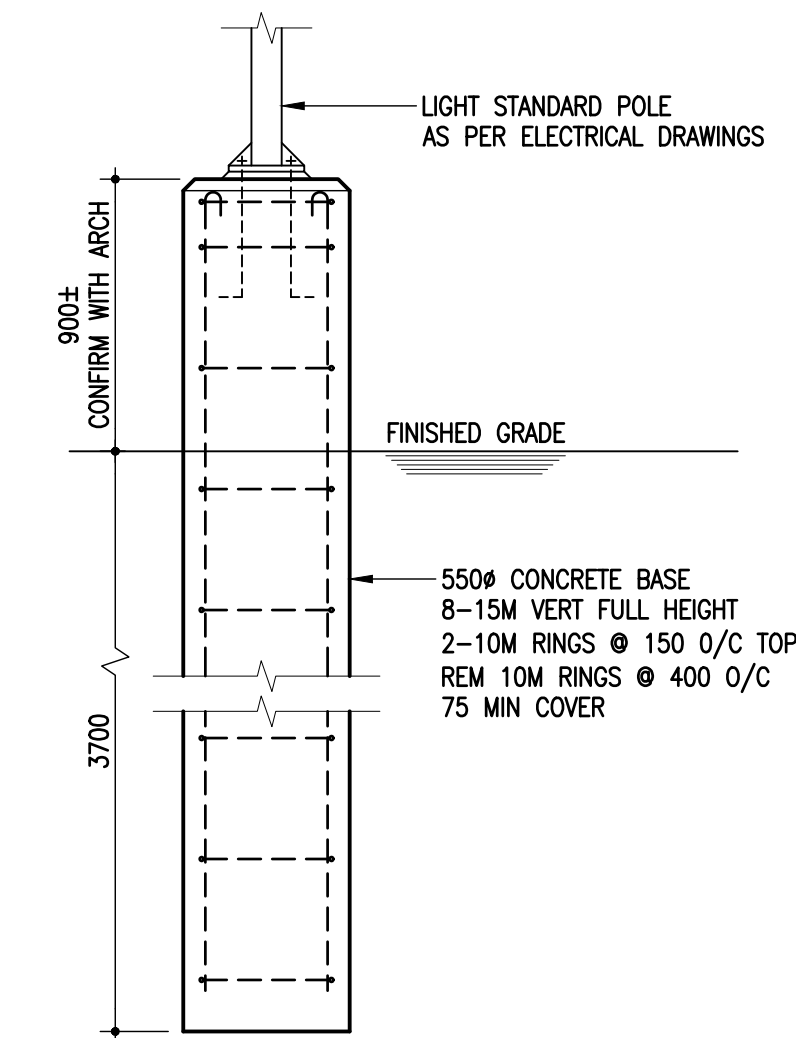
B CONSTRUCTION JOINT IN CONCRETE BEAMS & SLABS
S1.2 | S1.2 1:25

C HOUSEKEEPING PAD / CURB DETAIL
S1.2 | S1.2 1:25



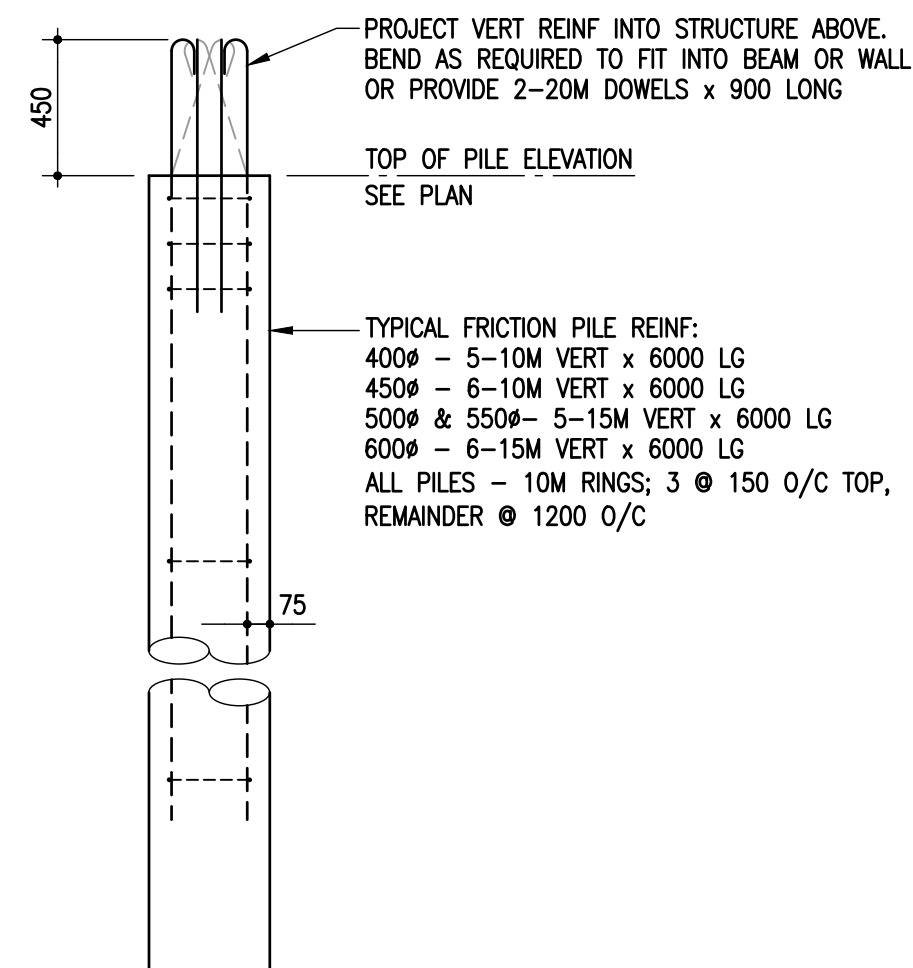
D TYPICAL EXTERIOR GRADE SUPPORTED MECHANICAL/ELECTRICAL PAD DETAIL
S1.2 | S1.2 1:25

E TYPICAL "LAMP STANDARD POLE" CONCRETE BASE DETAIL
S1.2 | S1.2 1:25

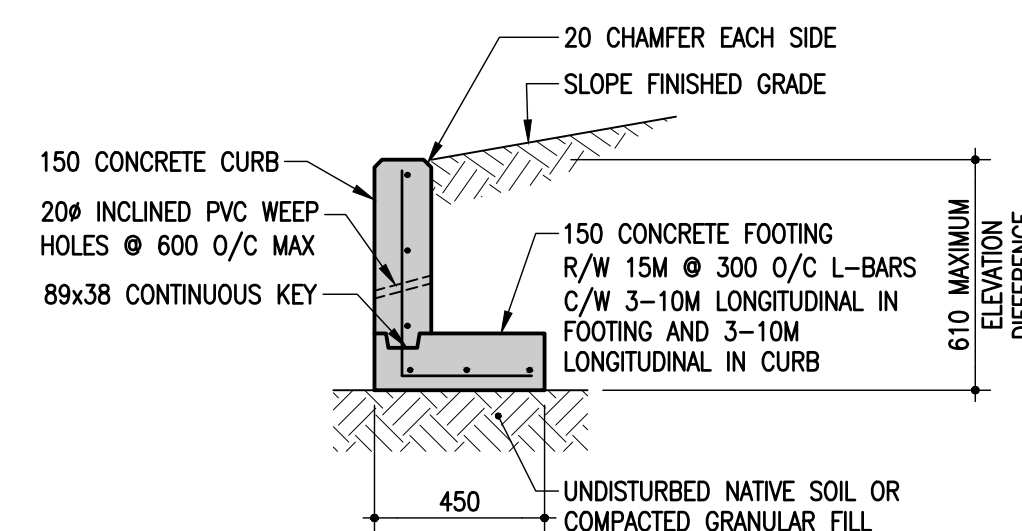


F TYPICAL APRON SLAB/SHELF ANGLE DETAIL
S1.2 | S1.2 1:20

- ALL SHELF ANGLES, PLATES, ETC SHALL BE GALVANIZED.
- TOUCH UP ALL WELDING WITH ZINC RICH PAINT.

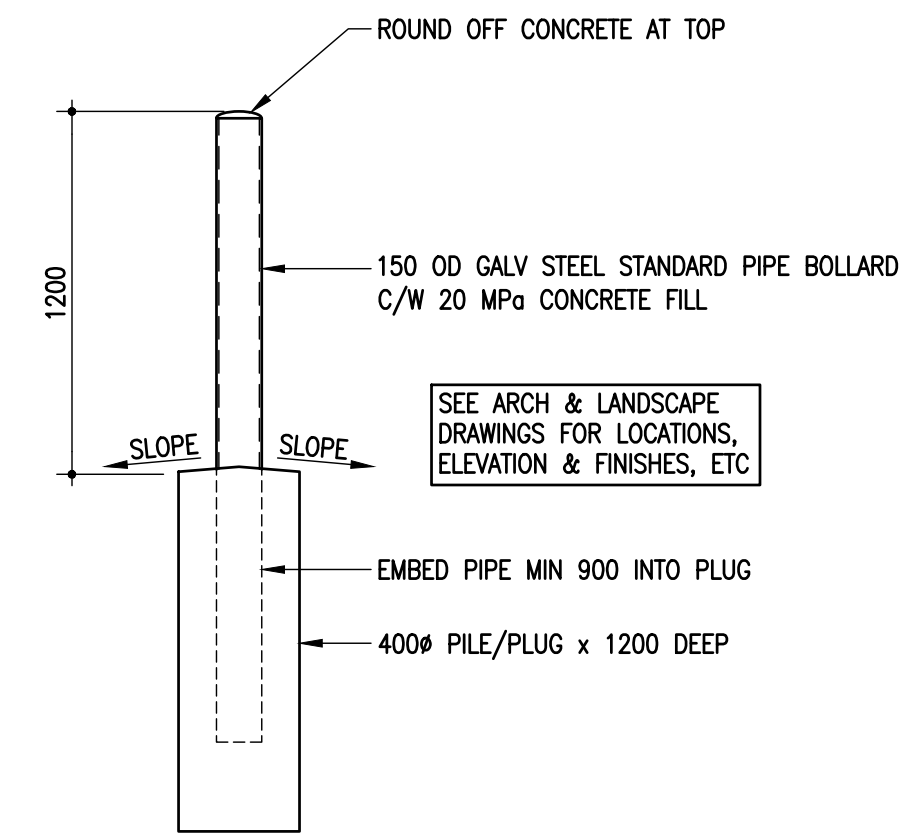


G SINGLE PILE DETAIL
S1.2 | S1.2 1:25



H TYPICAL RETAINING WALL DETAIL
S1.2 | S1.2 1:20

- NOTE: COORDINATE EXACT LOCATIONS AND EXTENTS REQUIRED WITH ARCHITECTURAL/CIVIL DRAWINGS



J TYPICAL BOLLARD DETAIL
S1.2 | S1.2 1:25

- NOTE: COORDINATE EXACT LOCATIONS AND QUANTITIES WITH ARCHITECTURAL DRAWINGS

NO.	DATE	REVISION / ISSUANCE
3	-	-
2	-	-
1	-	-
0	21.10.29	ISSUED FOR CONSTRUCTION

Architect

Engineer



Sheet Title